

KANSAS CORPORATION COMMISSION
OIL & GAS CONSERVATION DIVISION

TEMPORARY ABANDONMENT WELL APPLICATION

OPERATOR: License#
Name:
Address 1:
Address 2:
City: State: Zip:
Contact Person:
Phone:
Contact Person Email:
Field Contact Person:
Field Contact Person Phone:

API No. 15-
Spot Description:
Sec. Twp. S. R.
GPS Location: Lat, Long
Datum: NAD27, NAD83, WGS84
County: Elevation:
Lease Name: Well #:
Well Type: Oil, Gas, OG, WSW, Other
SWD Permit #: ENHR Permit #:
Gas Storage Permit #:
Spud Date: Date Shut-In:

Table with 7 columns: Conductor, Surface, Production, Intermediate, Liner, Tubing. Rows include Size, Setting Depth, Amount of Cement, Top of Cement, Bottom of Cement.

Casing Fluid Level from Surface: How Determined? Date:
Casing Squeeze(s): to w / sacks of cement, to w / sacks of cement. Date:
Do you have a valid Oil & Gas Lease? Yes No
Depth and Type: Junk in Hole at Tools in Hole at Casing Leaks: Yes No Depth of casing leak(s):
Type Completion: ALT. I ALT. II Depth of: DV Tool: w / sacks of cement Port Collar: w / sack of cement
Packer Type: Size: Inch Set at: Feet
Total Depth: Plug Back Depth: Plug Back Method:

Geological Data:

Table with 4 columns: Formation Name, Formation Top, Formation Base, Completion Information. Rows 1 and 2.

UNDER PENALTY OF PERJURY I HEREBY ATTEST THAT THE INFORMATION CONTAINED HEREIN IS TRUE AND CORRECT TO THE BEST OF MY KNOWLEDGE

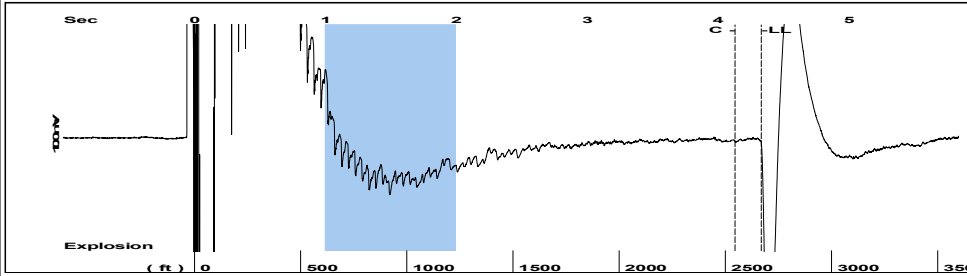
Submitted Electronically

Do NOT Write in This Space - KCC USE ONLY
Date Tested: Results: Date Plugged: Date Repaired: Date Put Back in Service:
Review Completed by: Comments:
TA Approved: Yes Denied Date:

Mail to the Appropriate KCC Conservation Office:

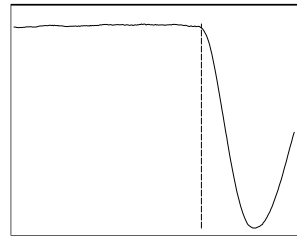
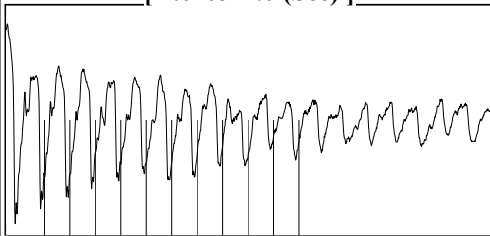
Table with 2 columns: Office Address, Phone. Rows for District Office #1, #2, #3, #4.

Group: TA'D Well: Spratt B-2 (acquired on: 04/22/26 10:47:46)



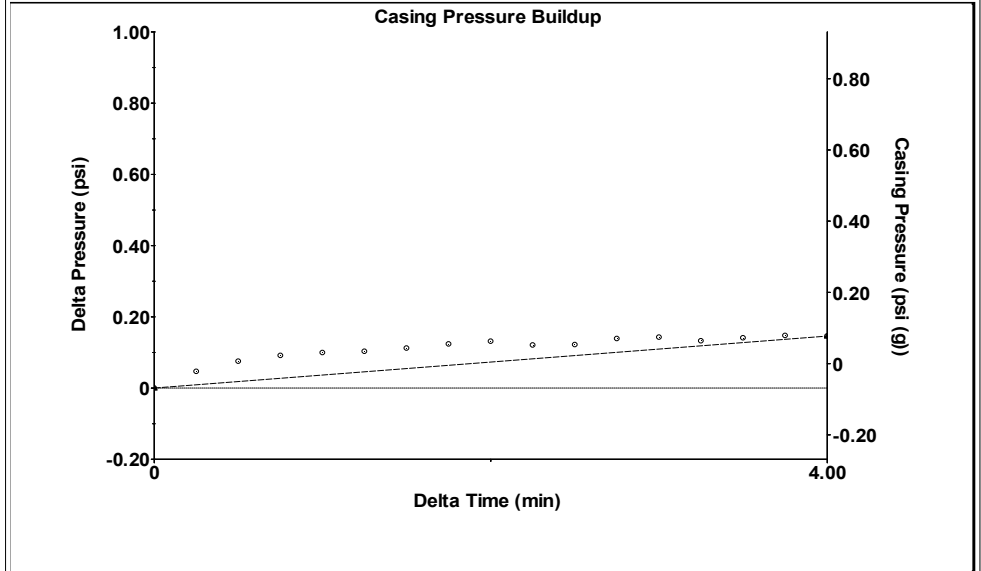
Filter Type High Pass Automatic Collar Count Yes Time 4.328 sec
 Manual Acoustic Veloc 1212.24 ft/s Manual JTS/sec 19.1205 Joints 84.1805 Jts
 Depth 2668.52 ft

[1.0 to 2.0 (Sec)]



Analysis Method: Automatic

Group: TA'D Well: Spratt B-2 (acquired on: 04/22/26 10:47:46)

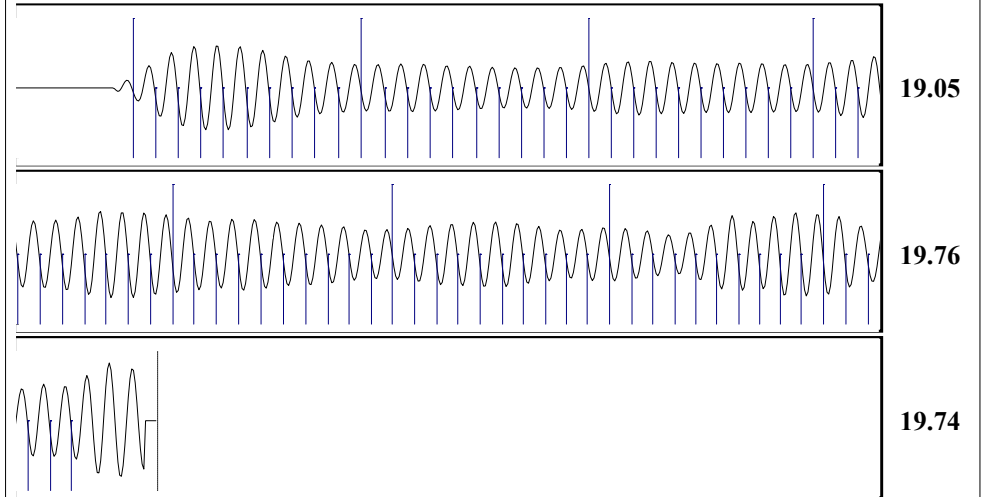


Change in Pressure 0.15 psi PT 14654
 Change in Time 4.00 min Range 0 - ? psi

Group: TA'D Well: Spratt B-2 (acquired on: 04/22/26 10:47:46)

<p>Production Current Potential</p> <p>Oil - * - 0.0 BBL/D</p> <p>Water - * - 0.0 BBL/D</p> <p>Gas - * - 0.0 Mscf/D</p> <p>IPR Method Vogel</p> <p>PBHP/SBHP 0.77</p> <p>Production Efficiency 37.1</p> <p>Oil 40 deg.API</p> <p>Water 1.05 Sp.Gr.H2O</p> <p>Gas 0.77 Sp.Gr.AIR</p> <p>Acoustic Velocity 1233.14 ft/s</p> <p>Formation Submergence</p> <p>Total Gaseous Liquid Column HT (TVD) 216 ft</p> <p>Equivalent Gas Free Liquid HT (TVD) 211 ft</p> <p>Acoustic Test</p>		<p>Producing</p> <p>Casing Pressure -0.1 psi (g)</p> <p>Casing Pressure Buildup 0.1 psi</p> <p>Gas/Liquid Interface Pressure 4.00 min</p> <p>Liquid Level Depth 2668.52 ft</p> <p>Pump Intake Depth 2885.00 ft</p> <p>Formation Depth 2847.00 ft</p> <p>Pump Intake 72.7 psi (g)</p> <p>Producing BHP 59.9 psi (g)</p> <p>Static BHP 82.1 psi (g)</p> <p>Annular Gas Flow 1 Mscf/D</p> <p>% Liquid 97 %</p>
--	--	---

Group: TA'D Well: Spratt B-2 (acquired on: 04/22/26 10:47:46)



Acoustic Velocity 1233.14 ft/s Joints counted 75
 Joints Per Second 19.4502 jts/sec Joints to liquid level 84.1805
 Depth to liquid level 2668.52 ft Filter Width 17.1205 21.1205
 Automatic Collar Count Yes Time to 1st Collar 0.272 4.128

Conservation Division
District Office No. 1
210 E. Frontview, Suite A
Dodge City, KS 67801



Phone: 620-682-7933
<http://kcc.ks.gov/>

Andrew J. French, Chairperson
Dwight D. Keen, Commissioner
Annie Kuether, Commissioner

Laura Kelly, Governor

04/29/2026

CASI RENFRO
Eiger Operating Company, LLC
3811 TURTLE CREEK BLVD SUITE 975
DALLAS, TX 75219-4784

Re: Temporary Abandonment
API 15-055-20954-00-00
SPRATT B 2
NW/4 Sec.05-25S-33W
Finney County, Kansas

Dear CASI RENFRO:

"Your temporary abandonment (TA) application for the well listed above has been approved. In accordance with K.A.R. 82-3-111 the TA status of this well will expire 04/29/2027.

- * If you return this well to service or plug it, please notify the District Office.
- * If you sell this well you are required to file a Transfer of Operator form, T-1.
- * If the well will remain temporarily abandoned, you must submit a new TA application, CP-111, before 04/29/2027.

You may contact me at the number above if you have questions.

Very truly yours,

Michael Maier"