

KANSAS CORPORATION COMMISSION
OIL & GAS CONSERVATION DIVISION

TEMPORARY ABANDONMENT WELL APPLICATION

OPERATOR: License#
Name:
Address 1:
Address 2:
City: State: Zip:
Contact Person:
Phone:
Contact Person Email:
Field Contact Person:
Field Contact Person Phone:

API No. 15-
Spot Description:
Sec. Twp. S. R.
GPS Location: Lat: Long:
Datum: NAD27 NAD83 WGS84
County: Elevation:
Lease Name: Well #:
Well Type: Oil Gas OG WSW Other:
SWD Permit #: ENHR Permit #:
Gas Storage Permit #:
Spud Date: Date Shut-In:

Table with 7 columns: Conductor, Surface, Production, Intermediate, Liner, Tubing. Rows include Size, Setting Depth, Amount of Cement, Top of Cement, Bottom of Cement.

Casing Fluid Level from Surface: How Determined? Date:
Casing Squeeze(s): to w / sacks of cement, to w / sacks of cement. Date:
Do you have a valid Oil & Gas Lease? Yes No
Depth and Type: Junk in Hole at Tools in Hole at Casing Leaks: Yes No Depth of casing leak(s):
Type Completion: ALT. I ALT. II Depth of: DV Tool: w / sacks of cement Port Collar: w / sack of cement
Packer Type: Size: Inch Set at: Feet
Total Depth: Plug Back Depth: Plug Back Method:

Geological Data:

Table with 4 columns: Formation Name, Formation Top, Formation Base, Completion Information. Rows 1 and 2.

UNDER PENALTY OF PERJURY I HEREBY ATTEST THAT THE INFORMATION CONTAINED HEREIN IS TRUE AND CORRECT TO THE BEST OF MY KNOWLEDGE

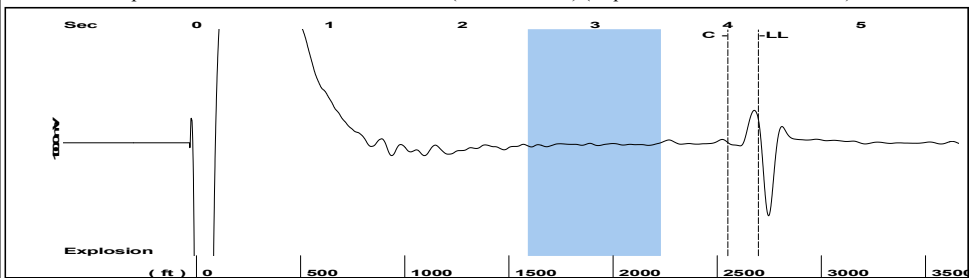
Submitted Electronically

Do NOT Write in This Space - KCC USE ONLY
Date Tested: Results: Date Plugged: Date Repaired: Date Put Back in Service:
Review Completed by: Comments:
TA Approved: Yes Denied Date:

Mail to the Appropriate KCC Conservation Office:

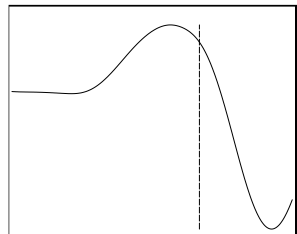
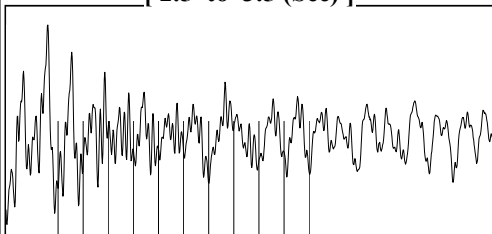
Table with 3 columns: District Office #, Address, Phone. Rows 1-4.

Group: SUBLETTE Well: Watkins A1-26 (Watkins A-1A) (acquired on: 04/28/26 15:04:50)



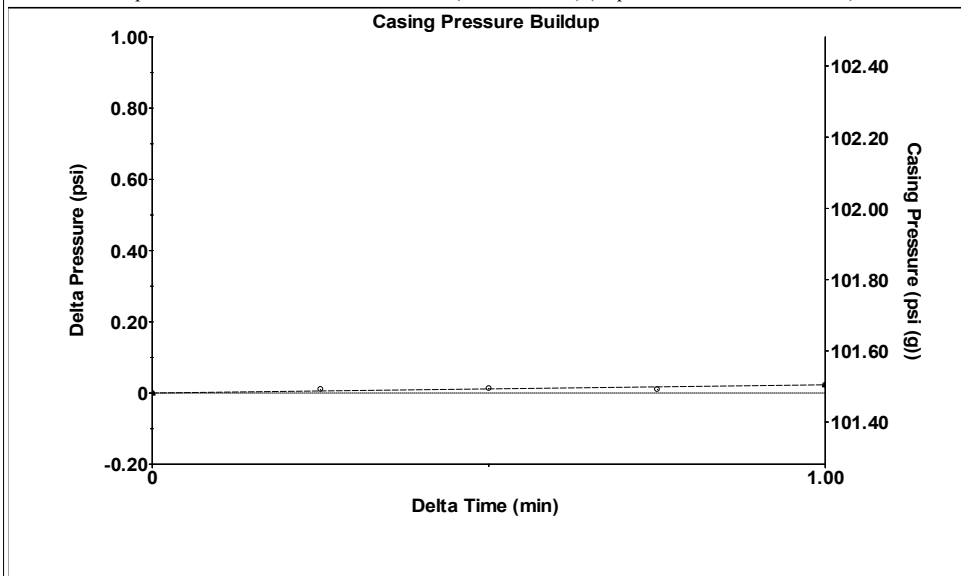
Filter Type High Pass Automatic Collar Count Yes Time 4.23 sec
 Manual Acoustic Veloc 1228.68 ft/s Manual JTS/sec 19.3798 Joints 85.0992 Jts
 Depth 2697.65 ft

[2.5 to 3.5 (Sec)]



Analysis Method: Automatic

Group: SUBLETTE Well: Watkins A1-26 (Watkins A-1A) (acquired on: 04/28/26 15:04:50)

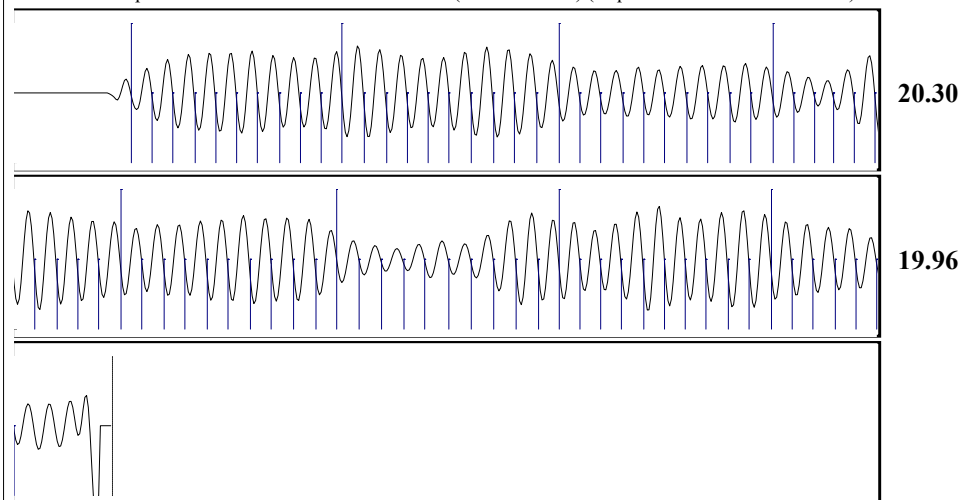


Change in Pressure 0.02 psi PT 14679
 Change in Time 1.00 min Range 0 - ? psi

Group: SUBLETTE Well: Watkins A1-26 (Watkins A-1A) (acquired on: 04/28/26 15:04:50)

Production	Potential	Casing Pressure	Producing
Oil - * -	- * - BBL/D	101.5 psi (g)	
Water - * -	- * - BBL/D	Casing Pressure Buildup	Annular
Gas - * -	- * - Mscf/D	0.023 psi	Gas Flow
		1.00 min	1 Mscf/D
IPR Method	Vogel	Gas/Liquid Interface Pressure	% Liquid
PBHP/SBHP	- * -	109.3 psi (g)	100 %
Production Efficiency	0.0	Liquid Level Depth	
		2697.65 ft	
Oil 40 deg.API		Pump Intake Depth	
Water 1.05 Sp.Gr.H2O		2719.00 ft	
Gas 0.72 Sp.Gr.AIR		Formation Depth	
		2616.00 ft	
Acoustic Velocity	1275.48 ft/s		
Formation Submergence		Pump Intake	
Total Gaseous Liquid Column HT (TVD)	21 ft	116.5 psi (g)	
Equivalent Gas Free Liquid HT (TVD)	21 ft	Producing BHP	
		109.1 psi (g)	
		Static BHP	
		- * - psi (g)	

Group: SUBLETTE Well: Watkins A1-26 (Watkins A-1A) (acquired on: 04/28/26 15:04:50)



Acoustic Velocity 1275.48 ft/s Joints counted 75
 Joints Per Second 20.118 jts/sec Joints to liquid level 85.0992
 Depth to liquid level 2697.65 ft Filter Width 17.3798 21.3798
 Automatic Collar Count Yes Time to 1st Collar 0.272 4

Conservation Division
District Office No. 1
210 E. Frontview, Suite A
Dodge City, KS 67801



Phone: 620-682-7933
<http://kcc.ks.gov/>

Andrew J. French, Chairperson
Dwight D. Keen, Commissioner
Annie Kuether, Commissioner

Laura Kelly, Governor

04/29/2026

NIKO WELCH
Eiger Operating Company, LLC
3811 TURTLE CREEK BLVD SUITE 975
DALLAS, TX 75219-4784

Re: Temporary Abandonment
API 15-081-00081-00-01
WATKINS A 1-26
SW/4 Sec.26-28S-33W
Haskell County, Kansas

Dear NIKO WELCH:

"Your temporary abandonment (TA) application for the well listed above has been approved. In accordance with K.A.R. 82-3-111 the TA status of this well will expire 04/29/2027.

- * If you return this well to service or plug it, please notify the District Office.
- * If you sell this well you are required to file a Transfer of Operator form, T-1.
- * If the well will remain temporarily abandoned, you must submit a new TA application, CP-111, before 04/29/2027.

You may contact me at the number above if you have questions.

Very truly yours,

Michael Maier"