

KANSAS CORPORATION COMMISSION
OIL & GAS CONSERVATION DIVISION

TEMPORARY ABANDONMENT WELL APPLICATION

OPERATOR: License# \_\_\_\_\_
Name: \_\_\_\_\_
Address 1: \_\_\_\_\_
Address 2: \_\_\_\_\_
City: \_\_\_\_\_ State: \_\_\_\_\_ Zip: \_\_\_\_\_ + \_\_\_\_\_
Contact Person: \_\_\_\_\_
Phone:( \_\_\_\_\_ ) \_\_\_\_\_
Contact Person Email: \_\_\_\_\_
Field Contact Person: \_\_\_\_\_
Field Contact Person Phone: ( \_\_\_\_\_ ) \_\_\_\_\_

API No. 15- \_\_\_\_\_
Spot Description: \_\_\_\_\_
- - - - - Sec. \_\_\_\_\_ Twp. \_\_\_\_\_ S. R. \_\_\_\_\_  E  W
\_\_\_\_\_ feet from  N /  S Line of Section
\_\_\_\_\_ feet from  E /  W Line of Section
GPS Location: Lat: \_\_\_\_\_, Long: \_\_\_\_\_
Datum:  NAD27  NAD83  WGS84
County: \_\_\_\_\_ Elevation: \_\_\_\_\_  GL  KB
Lease Name: \_\_\_\_\_ Well #: \_\_\_\_\_
Well Type: (check one)  Oil  Gas  OG  WSW  Other: \_\_\_\_\_
 SWD Permit #: \_\_\_\_\_  ENHR Permit #: \_\_\_\_\_
 Gas Storage Permit #: \_\_\_\_\_
Spud Date: \_\_\_\_\_ Date Shut-In: \_\_\_\_\_

Table with 7 columns: Conductor, Surface, Production, Intermediate, Liner, Tubing. Rows include Size, Setting Depth, Amount of Cement, Top of Cement, Bottom of Cement.

Casing Fluid Level from Surface: \_\_\_\_\_ How Determined? \_\_\_\_\_ Date: \_\_\_\_\_
Casing Squeeze(s): \_\_\_\_\_ to \_\_\_\_\_ w / \_\_\_\_\_ sacks of cement, \_\_\_\_\_ to \_\_\_\_\_ w / \_\_\_\_\_ sacks of cement. Date: \_\_\_\_\_
Do you have a valid Oil & Gas Lease?  Yes  No
Depth and Type:  Junk in Hole at \_\_\_\_\_ (depth)  Tools in Hole at \_\_\_\_\_ (depth) Casing Leaks:  Yes  No Depth of casing leak(s): \_\_\_\_\_
Type Completion:  ALT. I  ALT. II Depth of:  DV Tool: \_\_\_\_\_ w / \_\_\_\_\_ sacks of cement  Port Collar: \_\_\_\_\_ w / \_\_\_\_\_ sack of cement
Packer Type: \_\_\_\_\_ Size: \_\_\_\_\_ Inch Set at: \_\_\_\_\_ Feet
Total Depth: \_\_\_\_\_ Plug Back Depth: \_\_\_\_\_ Plug Back Method: \_\_\_\_\_

Geological Date:

Table with 2 columns: Formation Name, Completion Information. Rows 1 and 2 for formation details.

UNDER PENALTY OF PERJURY I HEREBY ATTEST THAT THE INFORMATION CONTAINED HEREIN IS TRUE AND CORRECT TO THE BEST OF MY KNOWLEDGE

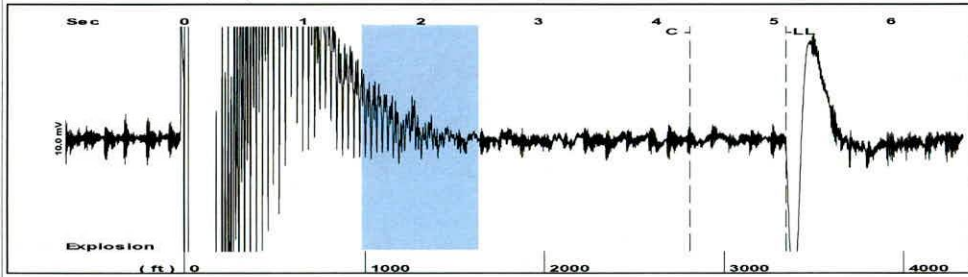
Submitted Electronically

Do NOT Write in This Space - KCC USE ONLY
Date Tested: \_\_\_\_\_ Results: \_\_\_\_\_ Date Plugged: \_\_\_\_\_ Date Repaired: \_\_\_\_\_ Date Put Back in Service: \_\_\_\_\_
Review Completed by: \_\_\_\_\_ Comments: \_\_\_\_\_
TA Approved:  Yes  Denied Date: \_\_\_\_\_

Mail to the Appropriate KCC Conservation Office:

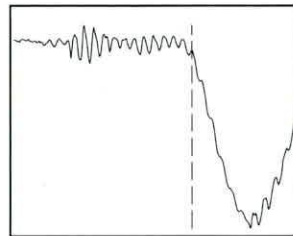
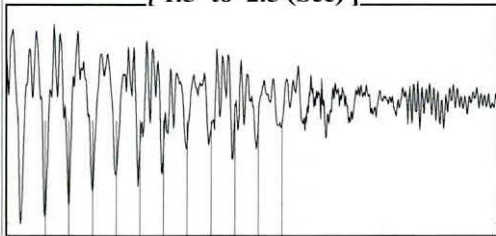
Table with 2 columns: Office Address, Phone. Rows for KCC District Office #1 through #4.

Group: MyWells Well: Palmquist 4-32 (acquired on: 04/24/26 14:44:09 )



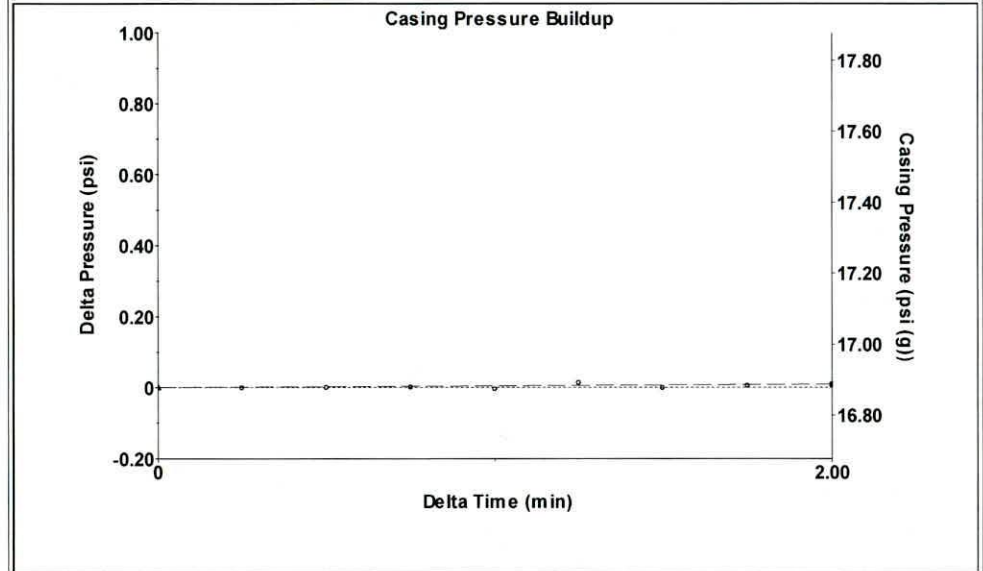
Filter Type High Pass Automatic Collar Count Yes Time 5.106 sec  
 Manual Acoustic Vel 1320.83 ft/s Manual JTS/sec 20.8333 Joints 105.527 Jts  
 Depth 3345.22 ft

[ 1.5 to 2.5 (Sec) ]



**Analysis Method: Automatic**

Group: MyWells Well: Palmquist 4-32 (acquired on: 04/24/26 14:44:09 )



Change in Pressure 0.01 psi PT15565  
 Range 0 - ? psi  
 Change in Time 2.00 min

Group: MyWells Well: Palmquist 4-32 (acquired on: 04/24/26 14:44:09 )

<b>Production</b>			
Current	Potential	Casing Pressure	16.9 psi (g)
Oil - *-	- *- BBL/D	Casing Pressure Buildup	0.009 psi
Water - *-	- *- BBL/D	2.00 min	
Gas - *-	- *- Mscf/D	Gas/Liquid Interface Pressure	- *- psi (g)
IPR Method	Vogel	Liquid Level Depth	3345.22 ft
PBHP/SBHP	- *-	Pump Intake Depth	4425.00 ft
Production Efficiency	0.0	Formation Depth	4427.00 ft
Oil 40 deg.API			
Water 1.05 Sp.Gr.H2O			
Gas 0.69 Sp.Gr.AIR			
Acoustic Velocity	1310.31 ft/s		

**Producing**

Annular Gas Flow - \*- Mscf/D

% Liquid 100 %

**Pump Intake**

- \*- psi (g)

**Producing BHP**

- \*- psi (g)

**Static BHP**

- \*- psi (g)

**Formation Submergence**

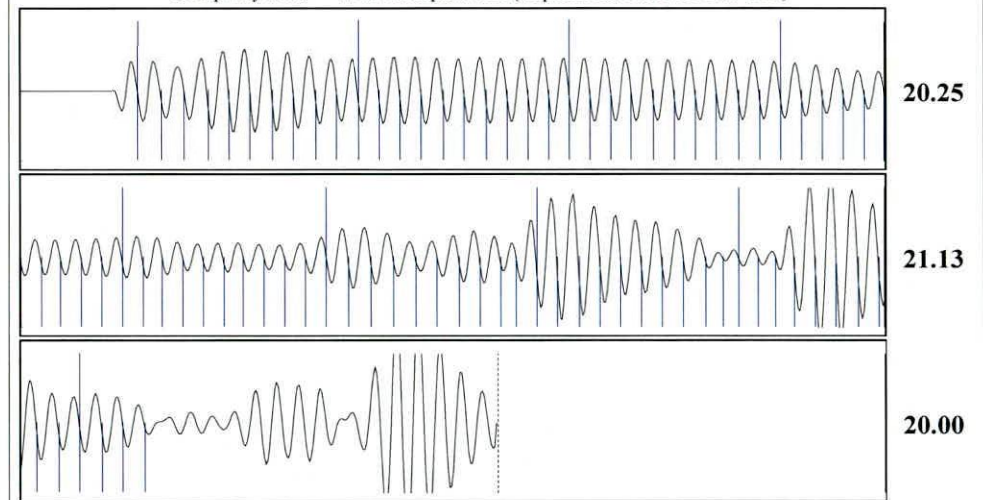
Total Gaseous Liquid Column HT (TVD) - \*- ft

Equivalent Gas Free Liquid HT (TVD) - \*- ft

Palmquist 4



Group: MyWells Well: Palmquist 4-32 (acquired on: 04/24/26 14:44:09 )



Acoustic Velocity	1310.31 ft/s	Joints counted	83
Joints Per Second	20.6673 jts/sec	Joints to liquid level	105.527
Depth to liquid level	3345.22 ft	Filter Width	18.8333
Automatic Collar Count	Yes	Time to 1st Collar	0.272
			22.8333
			4.288



Conservation Division  
District Office No. 1  
210 E. Frontview, Suite A  
Dodge City, KS 67801



Phone: 620-682-7933  
<http://kcc.ks.gov/>

Andrew J. French, Chairperson  
Dwight D. Keen, Commissioner  
Annie Kuether, Commissioner

Laura Kelly, Governor

04/29/2026

Anthony Farrar  
Indian Oil Co., Inc.  
308 S. Main St.  
PO BOX 209  
MEDICINE LODGE, KS 67104-0209

Re: Temporary Abandonment  
API 15-151-21969-00-01  
PALMQUIST OWWO 4-32  
SE/4 Sec.32-29S-13W  
Pratt County, Kansas

Dear Anthony Farrar:

"Your temporary abandonment (TA) application for the well listed above has been approved. In accordance with K.A.R. 82-3-111 the TA status of this well will expire 04/29/2027.

- \* If you return this well to service or plug it, please notify the District Office.
- \* If you sell this well you are required to file a Transfer of Operator form, T-1.
- \* If the well will remain temporarily abandoned, you must submit a new TA application, CP-111, before 04/29/2027.

You may contact me at the number above if you have questions.

Very truly yours,

Michael Maier"