

KANSAS CORPORATION COMMISSION
OIL & GAS CONSERVATION DIVISION

TEMPORARY ABANDONMENT WELL APPLICATION

OPERATOR: License#
Name:
Address 1:
Address 2:
City: State: Zip:
Contact Person:
Phone:
Contact Person Email:
Field Contact Person:
Field Contact Person Phone:

API No. 15-
Spot Description:
Sec. Twp. S. R.
GPS Location: Lat: Long:
Datum: NAD27 NAD83 WGS84
County: Elevation:
Lease Name: Well #:
Well Type: Oil Gas OG WSW Other:
SWD Permit #: ENHR Permit #:
Gas Storage Permit #:
Spud Date: Date Shut-In:

Table with 7 columns: Conductor, Surface, Production, Intermediate, Liner, Tubing. Rows include Size, Setting Depth, Amount of Cement, Top of Cement, Bottom of Cement.

Casing Fluid Level from Surface: How Determined? Date:
Casing Squeeze(s): to w / sacks of cement, to w / sacks of cement. Date:
Do you have a valid Oil & Gas Lease? Yes No
Depth and Type: Junk in Hole at Tools in Hole at Casing Leaks: Yes No Depth of casing leak(s):
Type Completion: ALT. I ALT. II Depth of: DV Tool: w / sacks of cement Port Collar: w / sack of cement
Packer Type: Size: Inch Set at: Feet
Total Depth: Plug Back Depth: Plug Back Method:

Geological Data:

Table with 4 columns: Formation Name, Formation Top, Formation Base, Completion Information. Rows 1 and 2.

UNDER PENALTY OF PERJURY I HEREBY ATTEST THAT THE INFORMATION CONTAINED HEREIN IS TRUE AND CORRECT TO THE BEST OF MY KNOWLEDGE

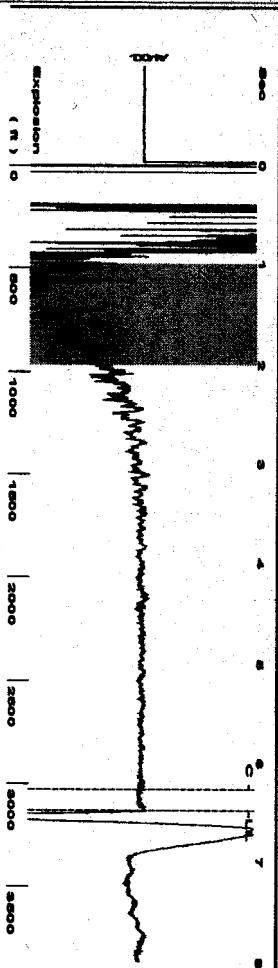
Submitted Electronically

Do NOT Write in This Space - KCC USE ONLY
Date Tested: Results: Date Plugged: Date Repaired: Date Put Back in Service:
Review Completed by: Comments:
TA Approved: Yes Denied Date:

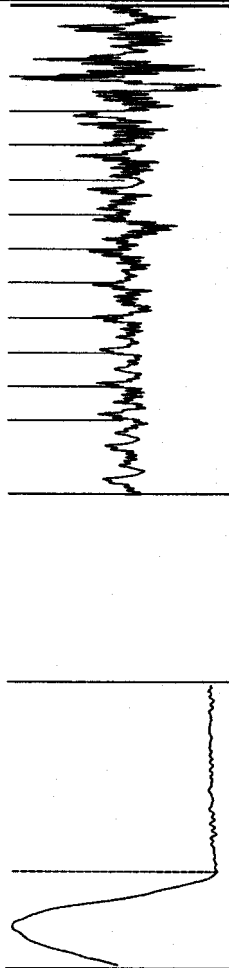
Mail to the Appropriate KCC Conservation Office:

Table with 3 columns: District Office #, Address, Phone. Includes map of Kansas with numbered districts 1-4.

Group: Arrowhead Well: Becker 4 (acquired on: 04/29/26 13:42:28)



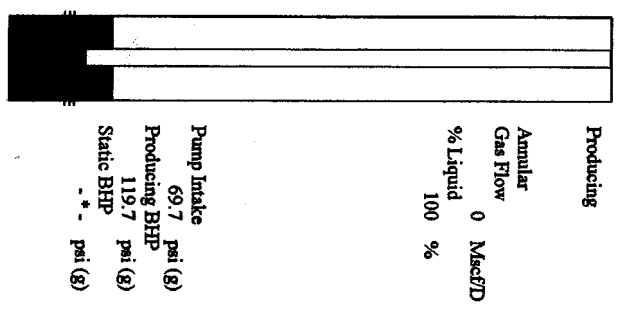
Filter Type High Pass Automatic Collar Count Yes
 Manual Acoustic Velocity 6898.017 ft/s Manual JTS/sec 14.1643
 Time 6.476 sec
 Joints 98.7998 ft
 Depth 3131.95 ft



Analysis Method: Automatic

Group: Arrowhead Well: Becker 4 (acquired on: 04/29/26 13:42:28)

Production	Potential	Casing Pressure	Producing
Oil -*- Water -*- Gas -*-	-*- BBL/D -*- BBL/D -*- Mscf/D	0.0 psi (g) Casing Pressure Buildup -*- psi	Annular Gas Flow 0 Mscf/D % Liquid 100 %
IPR Method PBHP/SHHP Production Efficiency 0.0	Vogel -*- 0.0	Gas/Liquid Interface Pressure 1.6 psi (g) Liquid Level Depth 3131.95 ft Pump Intake Depth 3330.00 ft Formation Depth 3440.00 ft	Pump Intake 69.7 psi (g) Producing BHP 119.7 psi (g) Static BHP -*- psi (g)
Oil 40 deg-API Water 1.05 Sp.Gr.H2O Gas 1.02 Sp.Gr.AIR			
Acoustic Velocity 967.25 ft/s			
Formation Submergence Total Gaseous Liquid Column HT (TVVD) 198 ft Equivalent Gas Free Liquid HT (TVVD) 198 ft			
Acoustic Test			

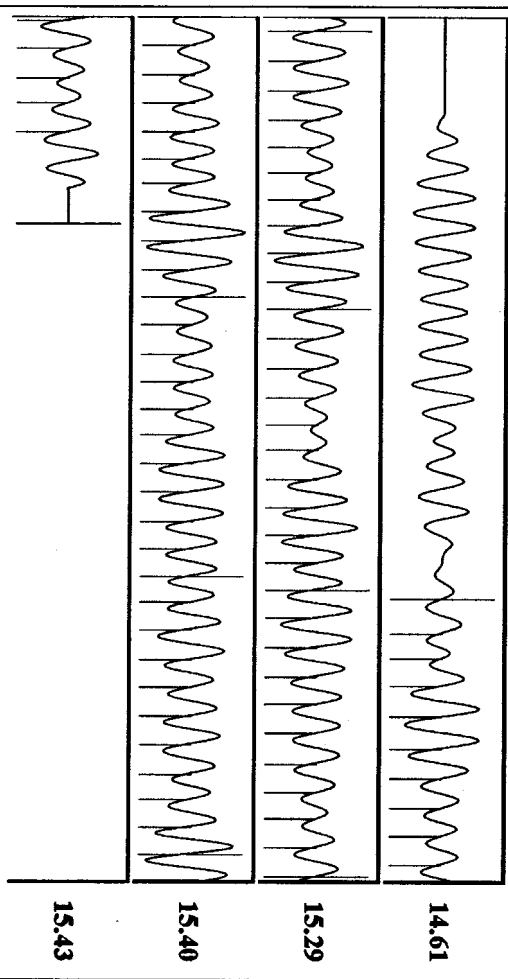


Group: Arrowhead Well: Becker 4 (acquired on: 04/29/26 13:42:28)

NO PRESSURE DATA AVAILABLE

Change in Pressure 0.00 psi NONE
 Change in Time 0.00 min Range
 0 - 7 psi

Group: Arrowhead Well: Becker 4 (acquired on: 04/29/26 13:42:28)



Acoustic Velocity 967.25 ft/s Joints counted 75
 Joints Per Second 15.2563 JTS/sec Joints to liquid level 98.7998
 Depth to liquid level 3131.95 ft Filter Width 12.1643
 Automatic Collar Count Yes Time to 1st Collar 1.348
 16.1643
 6.264

04/30/2026

Matt Morris
Arrowhead Exploration, LLC
2919 HALL ST
HAYS, KS 67601-1818

Re: Temporary Abandonment
API 15-009-23471-00-00
BECKER 4
SE/4 Sec.02-16S-15W
Barton County, Kansas

Dear Matt Morris:

"Your temporary abandonment (TA) application for the well listed above has been approved. In accordance with K.A.R. 82-3-111 the TA status of this well will expire 04/30/2027.

- * If you return this well to service or plug it, please notify the District Office.
- * If you sell this well you are required to file a Transfer of Operator form, T-1.
- * If the well will remain temporarily abandoned, you must submit a new TA application, CP-111, before 04/30/2027.

You may contact me at the number above if you have questions.

Very truly yours,

SHANE JONES"