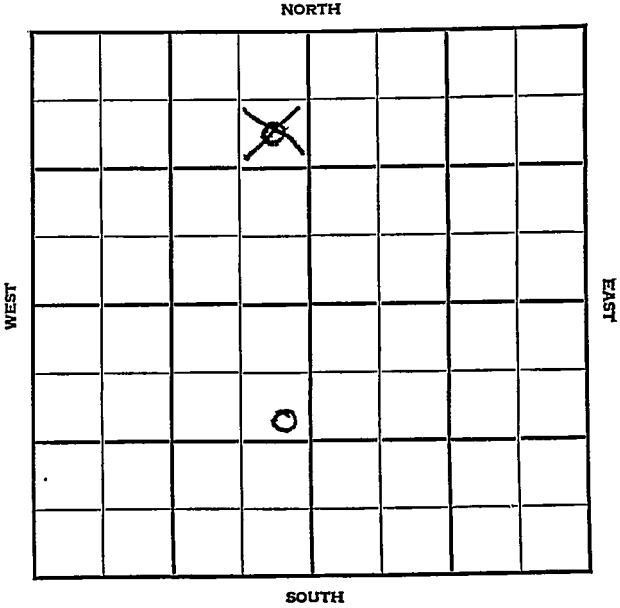


Section 31 Township 19^N Range 15^W

Well No. #2 Werhahn "A"

Company Inland Oil



Sec. 31 **KANSAS** Twp. 19 R. 15W

Well No. #2 Werhahn "A" Farm

Inland Oil

Company

Ryan Pool

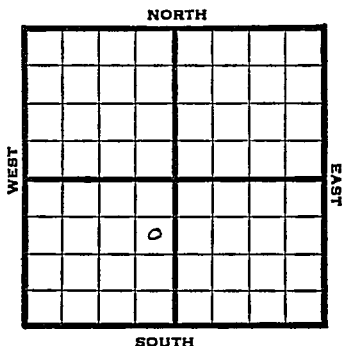
990' Ft. from N. Line

Ft. from S. Line

330' Ft. from E. Line

Ft. from W. Line

SE NE SW



1948 Elev. 1977' REPORT

- 6/9 Anhy 987'
8" @ 992'
Drlg. 2080'
- 6/16 Lansing 3383'
Drlg. 3542'
- 6/23 No report
- 6/29 Arbuckle 3640'
TD 3762'
5" @ 3762'
RUST
- 7/8 13 shots 3706-09'
swb 5 bbls oil PH
No wtr.
- 7/14 "
- 7/21 "
- 7/28 1500 acid
Flow 5 bbls oil PH 24 hrs.
through 5/16" Gk
- 8/4 "
- 8/11 Arbuckle 3640'
5" @ 3762'
TD 3762'
13 shots 3706-09
1500 acid
Flow 137 oil trace wtr Pot.
Gr. 390

- COMPLETED

Map No. _____ Sec. 31 Twp. 19 R. 15W

Well No. 2 Werhahn "A"

Inland O.1 Company _____

FIRST REPORT

Contractor _____

SE NE SW

SECTION PLAT

990 Ft. from N. Line

_____ Ft. from S. Line

330 Ft. from E. Line

_____ Ft. from W. Line

Barton County

Location _____

Rig up _____

Drilling and Remarks:

Any 987

8" @ 992

drlg. 2080

RECORD

Cased _____ in., _____ ft.

Sand _____

Gas _____

Oil _____

Total Depth _____

PRODUCTION

1st 24 hrs. Nat. _____

1st 24 hrs. after shot _____

Gas _____ Cu. Ft.

Dry Hole _____

Abandoned _____

Date

JUN 9 1948 19

S. J. LEWIS Scout

Barton County Kansas State

Map No. 82 Sec. 31 Twp. 19 R. 15W

Well No. 2 Werhahn "A"

Inland Oil Company

COMPLETE Contractor

SE NE SW

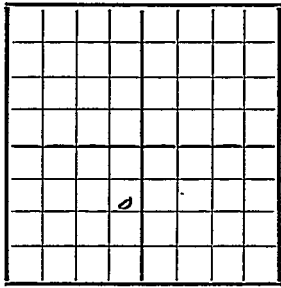
E. 11977
SECTION PLAT

990 Ft. from N. Line

 Ft. from S. Line

330 Ft. from E. Line

 Ft. from W. Line



Ryan Pool

Remarks:

CR 3640

5" @ 3762

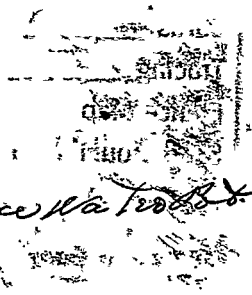
YD 3762

13 hrs to 3706-09

1500 @ acid

Flow 137 oil trace water

89 1/2 cu.



Date AUG 11 1948

Scout S. J. LEWIS