

Cowley

DX 78-1

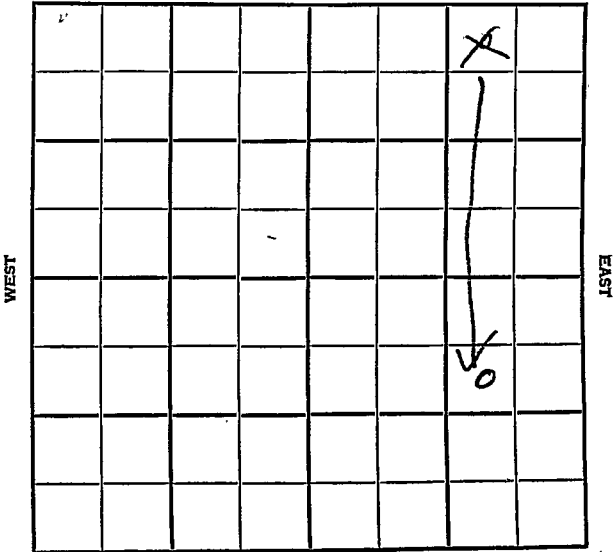
KANSAS

Section ~~26~~ ~~25~~ <sup>26</sup> Township 32 Range 4E

Well No. #8 Thirsk

Company E. F. Wakefield.

NORTH



SOUTH

26

Cowley

KANSAS

SEC. <del>35</del> 26	TWP. 32	R. 1E
-----------------------------	------------	----------

WELL NO. #8 Thirsk FARM

COMPANY E.F. Wakefield

CONTRACTOR

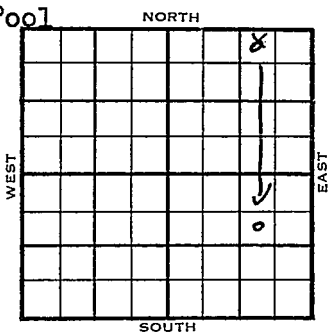
990 State Pool

330 Ft. from N. Line

Ft. from S. Line

990 Ft. from E. Line

Ft. from W. Line



SW NESE  
~~NW NE NE~~

1955	ELEVATION 1183'	REPORT
------	--------------------	--------

3/2	Spud 2-27-55 8" @ 98' Drlg. 904'
3/23	Spud 2-27-55, oil well, TD 2921 8" @ 98 Bart 2913, TD 2919, 5" @ 2914 DD 2921, hydro, Comp. 25 BOPD 15% wtr.

**COMPLETED**

County **Cowley** State **Kansas**

Sec. **26** (Blk. Twp.) **32** (Sur. Rge.) **4E** Map No.

Operator **E. F. Wakefield**

Well No. **8** Farm **Thirsk**

Elev. Location **NW NE NE**


**330** Ft. From **N** Line **NE**  
**990** Ft. From **E** Line **Quarter**  
 MAR 2 1955

1st. Report

Completion

Remarks

Spudding Date **2-27-55**

Drlg. Data **State Pool**

**8" @ 98** drlg. **904**

FABEN GILSTRAP

## SCOUT TICKET

DX-201

Kansas

SEC.

TWP.

R.

35

32

4E

WELL NO.

8 Thirsk

FARM

COMPANY

E. F. Wakefield

CONTRACTOR

CORRECTION

NW NE NE

330

FT. FROM N. LINE

\_\_\_\_ FT. FROM S. LINE

990

FT. FORM E. LINE

\_\_\_\_ FT. FROM W. LINE

NORTH


WEST

EAST

SOUTH

Cowley County

LOCATION

RIG UP

DRILLING AND REMARKS:

Reported

26-32-4E

RECORD

CASED IN., FT.

SAND

GAS

OIL

TOTAL DEPTH

PRODUCTION

1ST 24 HRS. NAT.

1ST 24 HRS. AFTER SHOT

GAS CU. FT.

DRY HOLE

ABANDONED

DATE

MAR 9 1955

SCOUT

FABEN GIL STRAP

## SCOUT TICKET DX-201

Kansas

SEC.	TWP.	R.
26	32	4E

WELL NO.

8 Thirsk FARM  
COMPANY

Wakefield  
CONTRACTOR

CORRECTION

SW NE SE	NORTH			
990	FT. FROM N. LINE			
	FT. FROM S. LINE			
990	FT. FORM E. LINE			
	FT. FROM W. LINE			

WEST


EAST

SOUTH

Cowley County

<input type="checkbox"/> LOCATION <input type="checkbox"/> RIG UP DRILLING AND REMARKS:  <div style="border: 1px solid black; border-radius: 50%; padding: 10px; display: inline-block;">           Recorrected            from            35-32-4E            NW NE NE         </div>	RECORD	CASED IN., FT.
		SAND
	PRODUCTION	GAS
		OIL
		TOTAL DEPTH
		1ST 24 HRS. NAT.
		1ST 24 HRS. AFTER SHOT
		GAS CU. FT.
		DRY HOLE
		ABANDONED
DATE	SCOUT	
MAR 16 1955	FABEN GILSTRAP	

