

13403 DST#1

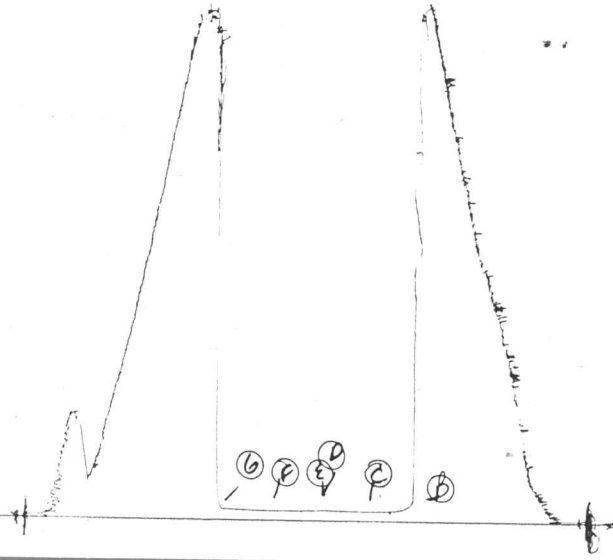
#11281

Plot # 11281

I

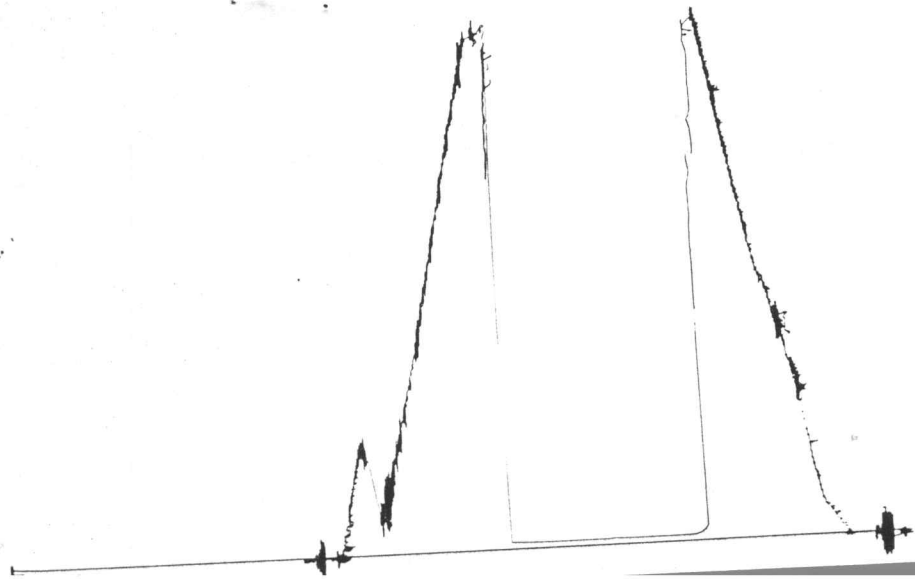
(H)

(D)



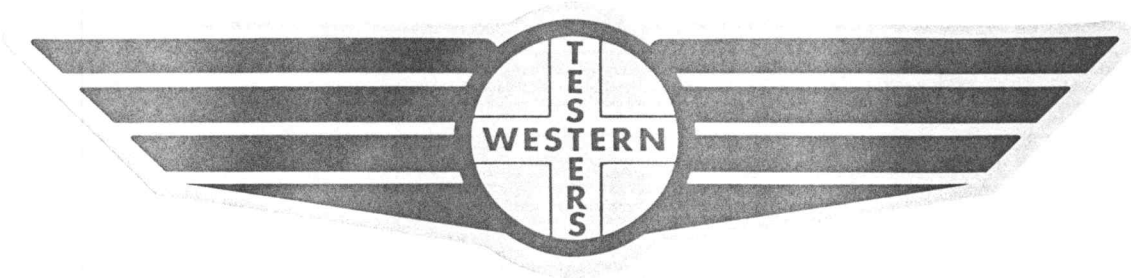
3659 05741
T. cat # 71281

Sk # 11281
0



COMPANY _____ MURFIN DRILLING COMPANY _____ LEASE & WELL NO. _____ #1-9 IRON _____ SEC. 9 TWP. 30S RGE. 24W TEST NO. 1 DATE 7/16/86

FORMATION TEST REPORT



Home Office:

Wichita, Kansas 67201

P.O. Box 1599

Phone (316) 262-5861

WESTERN TESTERS INC.
SUBSURFACE PRESSURE SURVEY

DATE : 7-16-86 TICKET : 11281
CUSTOMER : MURFIN DRILLING COMPANY LEASE : IRON
WELL : #1-9 TEST: 1 GEOLOGIST : C. SCHMALTZ
ELEVATION : 2549 FORMATION : MARROW SD.
SECTION : 9 TOWNSHIP : 30S
RANGE : 24W COUNTY : CLARK STATE : KANSAS
GAUGE SN# : 13403 RANGE : 4050 CLOCK : 12

INTERVAL FROM : 5296 TO : 5333 TOTAL DEPTH : 5333
DEPTH OF SELECTIVE ZONE :
PACKER DEPTH : 5291 SIZE : 6.63
PACKER DEPTH : 5296 SIZE : 6.63
PACKER DEPTH : SIZE :
PACKER DEPTH : SIZE :

DRILLING CON. : MURFIN DRLG. RIG 21
MUD TYPE : CHEM/DAPAC/STARCH

WEIGHT : 9.5 VISCOSITY : 52
CHLORIDES (PPM) : 14000 WATER LOSS (CC) : 8.4
JARS-MAKE : -- SERIAL NUMBER :
DID WELL FLOW ? : NO REVERSED OUT ? : NO

DRILL COLLAR LENGTH : 395 FT I.D. inch : 2.25
WEIGHT PIPE LENGTH : 0 FT I.D. inch : 0.00
DRILL PIPE LENGTH : 4881 FT I.D. inch : 3.80
TEST TOOL LENGTH : 20 FT TOOL SIZE : 5.50
ANCHOR LENGTH : 37 FT ANCHOR SIZE : 5.50
SURFACE CHOKE SIZE : .75 IN BOTTOM CHOKE SIZE : .75
MAIN HOLE SIZE : 7.875 IN TOOL JOINT SIZE : 4.5 XH

BLOW COMMENT #1 : WEAK STEADY BLOW THROUGHOUT THE INITIAL FLOW.
BLOW COMMENT #2 : VERY WEAK BLOW SLOWLY DECREASING THROUGHOUT
BLOW COMMENT #3 : THE FINAL FLOW.
BLOW COMMENT #4 :

RECOVERED : 20 FT OF: DRILLING MUD

Total Barrels Fluid = 0.10
Total Fluid Prod Rate = 2.36 BFPD
Indicated Wtr Rate = 2.12 BWPD

REMARK 1 :
REMARK 2 :
REMARK 3 :
REMARK 4 :

SET PACKER(S) : 5:50 PM TIME STARTED OFF BOTTOM : 8:20 PM
WELL TEMPERATURE : 129
INITIAL HYDROSTATIC PRESSURE (A) 2653
INITIAL FLOW PERIOD MIN: 30 (B) 48 PSI TO (C) : 48
INITIAL CLOSED IN PERIOD MIN: 39 (D) 53
FINAL FLOW PERIOD MIN: 30 (E) 47 PSI TO (F) : 47
FINAL CLOSED IN PERIOD MIN: 42 (G) 55
FINAL HYDROSTATIC PRESSURE (H) 2653

WESTERN TESTERS INC.
WICHITA - KANSAS

Pressure Transient Report

COMPANY : MURFIN DRILLING COMPANY
RIG : CLARK-KANSAS
FIELD : IRON
WELL : #1-9
DATE : 7-16-86
GAUGE NO : 13403

OPERATIONAL COMMENTS

COMPANY : MURFIN DRILLING COMPANY
 WELL : #1-9
 GAUGE # : 13403
 DATE : 16/ 7/86

FIELD : IRON
 JOB # : 11281
 DEPTH : 5333
 EVENT :

DATA No.	REAL TIME HR:MN:SS	ELAPSE TIME DELTA HOURS	PRESSURE PSIG	TEMP DEG F	DELTA P Pi-P(i-1)
1	5:50:0	0.000	48.000	129.00	0.000
2	5:54:60	0.083	48.000	129.00	0.000
3	6:0:1	0.167	48.000	129.00	0.000
4	6:5:0	0.250	48.000	129.00	0.000
5	6:9:60	0.333	48.000	129.00	0.000
6	6:15:1	0.417	48.000	129.00	0.000
7	6:20:0	0.500	48.000	129.00	0.000
8	6:23:0	0.550	48.000	129.00	0.000
9	6:26:0	0.600	48.000	129.00	0.000
10	6:29:0	0.650	48.000	129.00	0.000
11	6:32:0	0.700	48.000	129.00	0.000
12	6:35:0	0.750	48.000	129.00	0.000
13	6:38:0	0.800	48.000	129.00	0.000
14	6:41:0	0.850	49.000	129.00	1.000
15	6:44:0	0.900	50.000	129.00	1.000
16	6:47:0	0.950	51.000	129.00	1.000
17	6:50:0	1.000	52.000	129.00	1.000
18	6:53:0	1.050	52.000	129.00	0.000
19	6:56:0	1.100	53.000	129.00	1.000
20	6:59:0	1.150	53.000	129.00	0.000
21	7:0:1	1.167	47.000	129.00	-6.000
22	7:3:60	1.233	47.000	129.00	0.000
23	7:9:1	1.317	47.000	129.00	0.000
24	7:14:0	1.400	47.000	129.00	0.000
25	7:18:60	1.483	47.000	129.00	0.000
26	7:24:1	1.567	47.000	129.00	0.000
27	7:29:0	1.650	47.000	129.00	0.000
28	7:32:0	1.700	47.000	129.00	0.000
29	7:35:0	1.750	47.000	129.00	0.000
30	7:38:0	1.800	47.000	129.00	0.000
31	7:41:0	1.850	47.000	129.00	0.000
32	7:44:0	1.900	47.000	129.00	0.000
33	7:47:0	1.950	48.000	129.00	1.000
34	7:50:0	2.000	49.000	129.00	1.000
35	7:53:0	2.050	50.000	129.00	1.000
36	7:56:0	2.100	51.000	129.00	1.000
37	7:59:0	2.150	52.000	129.00	1.000
38	8:2:0	2.200	53.000	129.00	1.000
39	8:5:0	2.250	54.000	129.00	1.000
40	8:8:0	2.300	55.000	129.00	1.000
41	8:11:0	2.350	55.000	129.00	0.000

WESTERN TESTERS INC.