

KANSAS *PL*

State Geological Survey  
WICHITA BRANCH

*release*

WELL COMPLETION REPORT AND  
DRILLER'S LOG

API No. 15 — 063 — 20,506  
County Number

S. 34 T. 15 R. 26W E W

Loc. NE SE SW

County Gove

Operator  
Kansas Oil Corporation

Address  
250 N. Rock Rd., Suite 300, Wichita, KS 67206

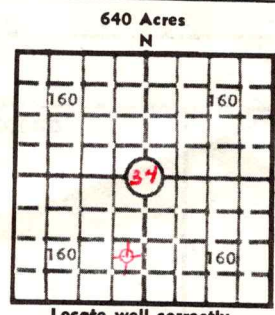
Well No. #2 Lease Name Lena West

Footage Location  
990 feet from ~~(N)~~ (S) line 2310 feet from ~~(X)(X)~~ (W) line

Principal Contractor Reach Drilling Geologist Paul Laird

Spud Date 4/28/81 Date Completed 5/5/81 Total Depth 4570 P.B.T.D.

Directional Deviation None Oil and/or Gas Purchaser D & A



Elev.: Gr. 2586

DF 2592 KB 2594

CASING RECORD

Report of all strings set — surface, intermediate, production, etc.

Purpose of string	Size hole drilled	Size casing set (in O.D.)	Weight lbs/ft.	Setting depth	Type cement	Sacks	Type and percent additives
Surface		8 5/8"		320'	common	200	2% gel 3% CaCl

LINER RECORD

PERFORATION RECORD

Top, ft.	Bottom, ft.	Sacks cement	Shots per ft.	Size & type	Depth interval

TUBING RECORD

Size	Setting depth	Packer set at

ACID, FRACTURE, SHOT, CEMENT SQUEEZE RECORD

Amount and kind of material used	Depth interval treated

INITIAL PRODUCTION D & A

Date of first production Producing method (flowing, pumping, gas lift, etc.)

RATE OF PRODUCTION PER 24 HOURS  
Oil bbls. Gas MCF Water bbls. Gas-oil ratio CFPB

Disposition of gas (vented, used on lease or sold) Producing interval (s)

INSTRUCTIONS: As provided in KCC Rule 82-2-125, within 90 days after completion of a well, one completed copy of this Drillers Log shall be transmitted to the State Geological Survey of Kansas, 4150 Monroe Street, Wichita, Kansas 67209. Copies of this form are available from the Conservation Division, State Corporation Commission, 245 No. Water, Wichita, Kansas 67202. Phone AC 316-522-2206. If confidential custody is desired, please note Rule 82-2-125. Drillers Logs will be on open file in the Oil and Gas Division, State Geological Survey of Kansas, Lawrence, Kansas 66044.

Operator  
Kansas Oil Corporation

DESIGNATE TYPE OF COMP.: OIL, GAS,  
DRY HOLE, SWDW, ETC.:

Well No. #2      Lease Name Lena West      Dry Hole

S 34 T 15 R 26W<sup>E</sup><sub>W</sub>

**WELL LOG**

Show all important zones of porosity and contents thereof; cored intervals, and all drill-stem tests, including depth interval tested, cushion used, time tool open, flowing and shut-in pressures, and recoveries.

SHOW GEOLOGICAL MARKERS, LOGS RUN,  
OR OTHER DESCRIPTIVE INFORMATION.

FORMATION DESCRIPTION, CONTENTS, ETC.	TOP	BOTTOM	NAME	DEPTH
Anhydrite	2017			
Heebner	3856			
Toronto	3878			
Lansing A	3896			
Lansing B	3936			
Lansing C	3954			
Dennis	4124			
Stark	4144			
Marmaton	4303			
Pawnee	4342			
Ft. Scott	4405			
Cherokee Sh.	4431			
Miss. Unc.	4503			
DST#1, 4450-4530, Mississippian, 30-30-30-30, Rec. VSOSM, IHP 2260 psi., IFP 43-43 psi., ISIP 271 psi., FFP 43-43 psi., FSIP 152 psi., FHP 2239 psi., BHT 124°F.				

USE ADDITIONAL SHEETS, IF NECESSARY, TO COMPLETE WELL RECORD.

Date Received	<i>Michael R. Bryan</i>
	Signature
	Michael R. Bryan
	Title
	6/12/81
	Date