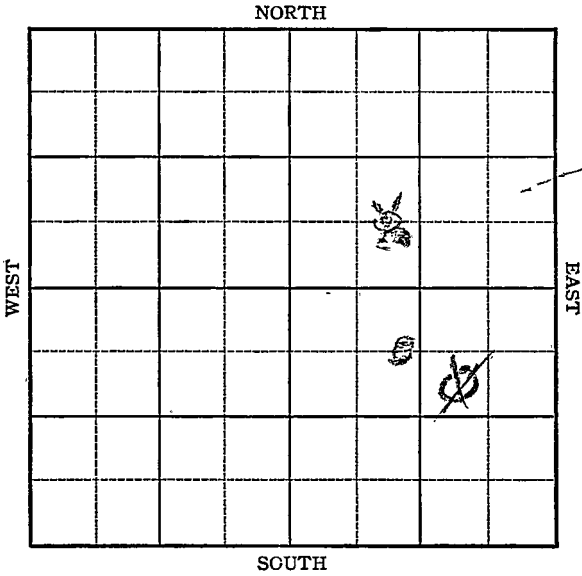


Section 17 Township 25 Range 5E

Well No. #6 Robinson

Company Wilson Oil





Sec. 17 Twp. 25 R. 5E

Well No. #6 Robinson Farm

Wilson Oil Company

Miscellaneous

660

990 Ft. from N. Line

~~660~~ Ft. from S. Line

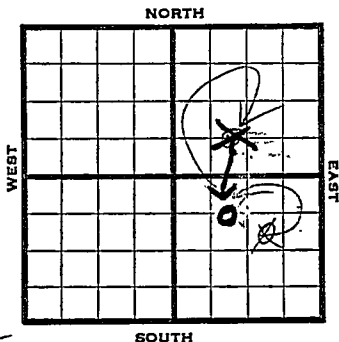
990 Ft. from E. Line

900

~~990~~ Ft. from W. Line

CEL NW SE

~~SW NE SE CEL NW SE~~



1946

Elev. 1374

REPORT

1/9 Location

1/17 "

1/24 Machine.

1/31 Spud.

2/7 15 1/2" - 210'

Drlg. 690'

2/14 12" - 870' 10" - 1669'

Drlg. 1675' 15

2/21 8" - 2230' Drlg. 2450'

3/7 T.D. 2567' P.B. to 2540'

Shot 50 qts. C.O.

3/13 " " "

3/20 Miss. 2475

7" @ 2473

TD 2567'

Pump 22 Pot.

Grav. 38.0

COMPLETED

KANSAS Kansas Pool Name MiscellaneousMap No. 14 Sec. 17 Twp. 25 R. 5EWell No. 6 RobinsonWilson Oil Company**FIRST REPORT** Contractor

SW NE SE

SECTION PLAT

990 Ft. from N. Line       Ft. from S. Line990 Ft. from E. Line       Ft. from W. Line

			6

Butler County

Location XRig up       Drilling and Remarks:       

## RECORD

Cased        in.,        ft.Sand       Gas       Oil       Total Depth       

## PRODUCTION

1st 24 hrs. Nat.       1st 24 hrs. after shot       Gas        Cu. Ft.Dry Hole       Abandoned       

Date

JAN 9 1946 19S. J. LEWIS Scout

KANSAS Pool Name Miscellaneous  
 Kansas  
 Map No. 12 Sec. 17 Twp. 25 R. 5E  
 Well No. 6 Robinson

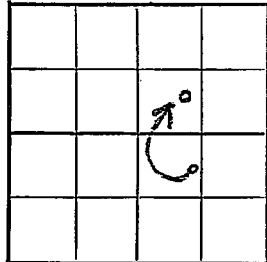
Wilson Oil Company  
CORRECTION Contractor

C E L NW SE

660 Ft. from N. Line  
 \_\_\_\_\_ Ft. from S. Line  
 \_\_\_\_\_ Ft. from E. Line  
990 Ft. from W. Line

*#4 at this spot*  
Butler County

SECTION PLAT



Location \_\_\_\_\_  
 Rig up \_\_\_\_\_  
 Drilling and Remarks:

reported  
 SW NE SE

*that's correct  
 but you also  
 here exact  
 increase*

RECORD

Cased \_\_\_\_\_ in., \_\_\_\_\_ ft.  
 Sand \_\_\_\_\_  
 Gas \_\_\_\_\_  
 Oil 1/2 to  
 Total Depth 11

NO PRODUCTION  
 1st 24 hrs. Nat. \_\_\_\_\_  
 1st 24 hrs. after shot \_\_\_\_\_  
 Gas \_\_\_\_\_ Cur. Ft. \_\_\_\_\_  
 Dry Hole \_\_\_\_\_  
 Abandoned can not spot

Date

FEB 6 1946 19

*2 wells  
 be on same  
 check  
 Advise*  
 S. J. LEWIS Scout  
*James*

1035

Sandy's  
we show a well  
at this spot some  
ft measured to etc.  
check advised  
Sum

- Misc. Small Maps ~~AM~~
- Cards *Sarah*
- Tracing *F*
- France Map *F*
- Scarborough Map *F*
- Moody Map *F*
- Geological Dept. *F*
- Moody Plat Book *F*

Kansas Pool Name miscellaneous

Map No. \_\_\_\_\_ Sec. 17 Twp. 25 R. 5E

Well No. 6 Robinson twin well

Wilson Oil Company

**CORRECTION**

Contractor \_\_\_\_\_

~~Case 1 NW SE~~

**SECTION PLAT**

		2	

~~000~~ Ft. from N. Line

666 Ft. from S. Line

\_\_\_\_\_ Ft. from E. Line

900 Ft. from W. Line

Butler County

Location \_\_\_\_\_

Rig up \_\_\_\_\_

Drilling and Remarks:

reported  
SW NE SE

**RECORD**

Cased \_\_\_\_\_ in., \_\_\_\_\_ ft.

Sand \_\_\_\_\_

Gas \_\_\_\_\_

Oil \_\_\_\_\_

Total Depth \_\_\_\_\_

**PRODUCTION**

1st 24 hrs. Nat. \_\_\_\_\_

1st 24 hrs. after shot \_\_\_\_\_

Gas \_\_\_\_\_ Cu. Ft.

Dry Hole \_\_\_\_\_

Abandoned \_\_\_\_\_

Date

FEB 27 1946 19

S. J. LEWIS Scout

Kansas Pool Name - Miscellaneous

Map No.    Sec. 17 Twp. 25 R. 5E

Well No. 6 Robinson: Tennis well

Wilson Oil Company

**CORRECTION**

Contractor

C E L NW SE

SECTION PLAT

660 Ft. from N. Line

       Ft. from S. Line

       Ft. from E. Line

990 Ft. from W. Line

		0	

Butler County

Location:       

Rig up:       

Drilling and Remarks:

reported

SW NE SE

RECORD

Cased        in.,        ft.

Sand       

Gas       

Oil       

Total Depth       

PRODUCTION

1st 24 hrs. Nat:       

1st 24 hrs. after shot       

Gas        Cu. Ft.

Dry Hole       

Abandoned       

Date

MAR 20 1946

19

S. J. LEWIS

Scout

Sandy :-

We show a #4 well completed at this spot

This makes 2 wells #4 and #6 on same spot

Advise Sandy



Misc. Small Maps	<del>7</del>
Cards	<del>7</del>
Tracing	7
France Map	7
Scarborough Map	7
Pierce Map	2
Geological Dept.	
Pierce Flat Book	

*Sandy*

**KANSAS** Kansas Pool Name - Miscellaneous

Map No. 107 Sec. 17 Twp. 25 R. 5E

Well No. 6 Robinson Twin Well

Wilson Oil Company

**COMPLETED**

Contractor

*E. 1374*

C E L NW SE

SECTION PLAT

660 Ft. from N. Line

\_\_\_\_\_ Ft. from S. Line

\_\_\_\_\_ Ft. from E. Line

900 Ft. from W. Line

		o	

Butler County

Location \_\_\_\_\_

Rig up \_\_\_\_\_

Drilling and Remarks:

*Misc 2425  
9" @ 2423  
Aug 22 1946*

*38-4*

**RECORD**

Cased \_\_\_\_\_ in., \_\_\_\_\_ ft.

Sand \_\_\_\_\_

Gas \_\_\_\_\_

Oil \_\_\_\_\_

Total Depth 2567

**PRODUCTION**

1st 24 hrs. Nat. \_\_\_\_\_

1st 24 hrs. after shot \_\_\_\_\_

Gas \_\_\_\_\_ Cu. Ft.

Dry Hole \_\_\_\_\_

Abandoned \_\_\_\_\_

Date

MAR 20 1946 19

S. J. LEWIS Scout