

14-31-18C P1

STATE CORPORATION COMMISSION OF KANSAS
OIL & GAS CONSERVATION DIVISION

WELL COMPLETION OR RECOMPLETION FORM
ACO-1 WELL HISTORY

DESCRIPTION OF WELL AND LEASE

Operator: License # 5498
Name Brecheisen Oil Co.
Address P. O. Box 40
City/State/Zip Garnett, Ks. 66032

Purchaser Triple "T"

Operator Contact Person A. W. Brecheisen
Phone 913-448-6952

Contractor: License # 5782
Name V W & B Drilling Co.

Wellsite Geologist
Phone

Designate Type of Completion

- New Well
- Re-Entry
- Workover
- Oil
- Gas
- Dry
- SWD
- Inj
- Other (Core, Water Supply etc.)
- Temp Abd
- Delayed Comp.

If OWWO: old well info as follows:

Operator
Well Name
Comp. Date Old Total Depth

WELL HISTORY

Drilling Method:
 Mud Rotary Air Rotary Cable

Spud Date 8-3-85 Date Reached TD 8-15-85 Completion Date 8-15-85

Total Depth 375 PBTB

Amount of Surface Pipe Set and Cemented at 20 feet
Multiple Stage Cementing Collar Used? Yes No
If yes, show depth set
If alternate 2 completion, cement circulated from 0 feet depth to 373 w/ 68 SX cmt

API No. 15-099-22-354

County Labette

SW NE Sec. 14 Twp. 31 Rge. 18

4290 Ft North from Southeast Corner of Section
990 Ft West from Southeast Corner of Section
(Note: Locate well in section plat below)

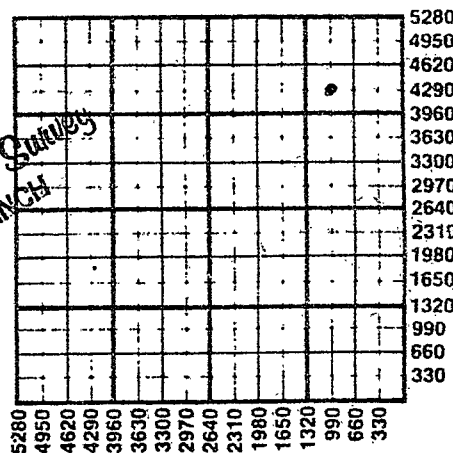
Lease Name Baker Well # 2 P 85

Field Name

Producing Formation Dennis

Elevation: Ground KB

Section Plat



SEP 03 1985
State Geological Survey
WICHITA BRANCH

WATER SUPPLY INFORMATION

Disposition of Produced Water: Disposal Repressuring
Docket #

Questions on this portion of the ACO-1 call:
Water Resources Board (913) 296-3717

Source of Water:
Division of Water Resources Permit #

Groundwater Ft North from Southeast Corner (Well) Ft West from Southeast Corner of Sec Twp Rge East West

Surface Water Ft North from Southeast Corner (Stream, pond etc.) Ft West from Southeast Corner Sec Twp Rge East West

Other (explain) (purchased from city, R.W.D. #)

INSTRUCTIONS: This form shall be completed in duplicate and filed with the Kansas Corporation Commission, 200 Colorado Derby Building, Wichita, Kansas 67202, within 90 days after completion or recompletion of any well. Rule 82-3-130 and 82-3-107 apply.

Information on side two of this form will be held confidential for a period of 12 months if requested in writing and submitted with the form. See rule 82-3-107 for confidentiality in excess of 12 months. One copy of all wireline logs and drillers time log shall be attached with this form. Submit CP-4 form with all plugged wells. Submit CP-111 form with all temporarily abandoned wells.

381-18-3

SIDE TWO

Operator Name Brecheisen Oil Company Lease Name Baker Well # 2 P 85

Sec. 14 n Twp. 31 Rge. 18 East West County Labette

WELL LOG

Table with columns for Oil and Gas production. Oil: 20,000 Bbls. Gas: (blank). Estimated Production Per 24 Hours.

rated. Detail all cores. Report all drill stem flowing and shut-in pressures, whether shut-in hole temperature, fluid recovery, and flow rates MCF is needed. Attach copy of log.

Drill Stem Tests Taken [] Yes [X] No
Samples Sent to Geological Survey [] Yes [X] No
Cores Taken [] Yes [X] No

Formation Description [] Log [] Sample

Table with columns: Name, Top, Bottom. Lists geological layers from Top Soil to Silty Gray Shale with depth markers.

Table with columns: Name, Top, Bottom. Lists geological layers from Gray Shale to Bottom of hole with depth markers.

METHOD OF COMPLETION

[] Open Hole [X] Perforation
[] Other (Specify)
[] Dually Completed
[] Commingled

CASING RECORD [X] New [] Used

Report all strings set-conductor, surface, intermediate, production, etc.

Table with columns: Purpose of String, Size Hole Drilled, Size Casing Set (in O.D.), Weight Lbs/Ft., Setting Depth, Type of Cement, #Sacks Used, Type and Percent Additives.

PERFORATION RECORD

Acid, Fracture, Shot, Cement Squeeze Record

Table with columns: Shots Per Foot, Specify Footage of Each Interval Perforated, (Amount and Kind of Material Used), Depth.

TUBING RECORD

Size 2 7/8 Set At 373 Packer at Liner Run [] Yes [] No

Date of First Production Producing Method [] Flowing [] Pumping [] Gas Lift [] Other (explain) none yet