

5-9-205

STATE CORPORATION COMMISSION OF KANSAS
OIL & GAS CONSERVATION DIVISION

WELL COMPLETION OR RECOMPLETION FORM
ACO-1 WELL HISTORY

DESCRIPTION OF WELL AND LEASE

Operator: License # 5115
Name Reese Exploration, Inc.
Address 5540 Raytown Rd.
City/State/Zip Raytown, Mo. 64133

Purchaser Vanguard Pipeline Corp.

Operator Contact Person Patty Eichman
Phone (816) 356-1970

Contractor: License # 5661
Name Kelly Down Drilling Co., Inc.

Wellsite Geologist Deacon Geology
Phone (913) 272-4383

Designate Type of Completion

New Well Re-Entry Workover

Oil SWD Temp Abd
 Gas Inj Delayed Comp.
 Dry Other (Core, Water Supply etc.)

If OWD: old well info as follows:

Operator
Well Name
Comp. Date
Old Total Depth

WELL HISTORY

Drilling Method:

Mud Rotary Air Rotary Cable

2-11-86 2-12-86 2-12-86
Spud Date Date Reached TD Completion Date

1140 1436
Total Depth PBDT

Amount of Surface Pipe Set and Cemented at 40 feet
Multiple Stage Cementing Collar Used? Yes No
If yes, show depth set.....feet
If alternate 2 completion, cement circulated
from.....feet depth to.....w/.....SX cmt

API NO. 15-087-20,215
County Jefferson
C SW SE Sec 5 Twp 9 Rge 20E East West

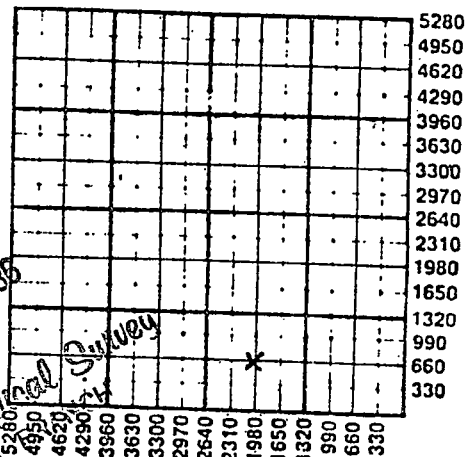
660 Ft North from Southeast Corner of Section
1980 Ft West from Southeast Corner of Section
(Note: Locate well in section plat below)

Lease Name Farris Well # 1-86

Field Name Zechariah

Producing Formation Cherokee Sand

Elevation: Ground 964 KB.
Section Plat



MAR 18 1986
State Geological Survey
WICHITA

WATER SUPPLY INFORMATION

Disposition of Produced Water: Disposal Repressuring
Docket #

Questions on this portion of the ACO-1 call:
Water Resources Board (913) 296-3717

Source of Water:
Division of Water Resources Permit #

Groundwater.....Ft North from Southeast Corner
(Well)Ft West from Southeast Corner of
Sec Twp Rge East West

Surface Water.....Ft North from Southeast Corner
(Stream, pond etc).....Ft West from Southeast Corner
Sec Twp Rge East West

Other (explain).....
(purchased from city, R.W.D. #)

INSTRUCTIONS: This form shall be completed in duplicate and filed with the Kansas Corporation Commission, 200 Colorado Derby Building, Wichita, Kansas 67202, within 90 days after completion or recompletion of any well. Rule 82-3-130 and 82-3-107 apply. Information on side two of this form will be held confidential for a period of 12 months if requested in writing and submitted with the form. See rule 82-3-107 for confidentiality in excess of 12 months. One copy of all wireline logs and drillers time log shall be attached with this form. Submit CP-4 form with all plugged wells. Submit CP-111 form with all temporarily abandoned wells.

Operator Name Reese Exploration, Inc. Lease Name Farris Well # 1-86

Sec. 5 Twp. 9 Rge. 20E East West County Jefferson

WELL LOG

INSTRUCTIONS: Show important tops and base of formations penetrated. Detail all cores. Report all drill stem tests giving interval tested, time tool open and closed, flowing and shut-in pressures, whether shut-in pressure reached static level, hydrostatic pressures, bottom hole temperature, fluid recovery, and flow rates if gas to surface during test. Attach extra sheet if more space is needed. Attach copy of log.

Drill Stem Tests Taken Yes No
 Samples Sent to Geological Survey Yes No
 Cores Taken Yes No

Formation Description
 Log Sample

Name	Top	Bottom
Base KC	690	
Marmaton Sh.	826	
Cherokee Sh.	920	
"U. McLouth Sd."	1,380	
"M. McLouth Sd."	1,384	
"L. McLouth Sd."	1,388	
Burgess Sd.	1,408	
Mississippian Lm.	1,421	

	Oil	Gas	Water	Gas-Oil Ratio	Gravity
Estimated Production Per 24 Hours		250			
	Bbls	MCF	Bbls	CFPB	

METHOD OF COMPLETION

Production Interval

Disposition of gas: Vented Open Hole Perforation
 Sold Other (Specify)

.....1380-1387

Report all strings set-conductor, surface, intermediate, production, etc.

Purpose of String	Size Hole Drilled	Size Casing Set (In O.D.)	Weight Lbs/Ft.	Setting Depth	Type of Cement	#Sacks Used	Type and Percent Additives
surface casing	9.3/4	7		10	portland	10	
	6.1/2	4.1/2		1436	portland	188	2% gel

PERFORATION RECORD

Shots Per Foot	Specify Footage of Each Interval Perforated	Acid, Fracture, Shot, Cement Squeeze Record (Amount and Kind of Material Used)	Depth
4	1380-1387	200 gal acid	prod.

TUBING RECORD	Size	Set At	Packer at	Liner Run	<input type="checkbox"/> Yes <input type="checkbox"/> No

Date of First Production shut-in Producing Method Flowing Pumping Gas Lift Other (explain).....