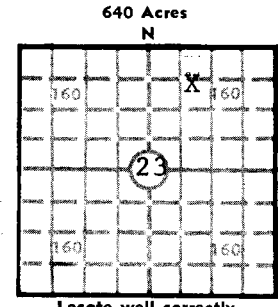


IMPORTANT
 Kans. Geo. Survey request
 samples on this well.

15-165-20688

S. 23 T. 16 R. 19 ^E/_W
 Loc. SE NW NE
 County Rush



Locate well correctly
 Elev.: Gr. 2052
 DF _____ KB 2057

API No. 15 — 165 County — 20,688 Number

Operator
F & M Oil Co., Inc.

Address
505 Union Center Wichita, Kansas 67202

Well No. #1 Lease Name Dreher

Footage Location
 feet from (N) (S) line _____ feet from (E) (W) line _____

Principal Contractor Woodman-Iannitti Geologist Don Strong

Spud Date 8-12-78 Total Depth 3700 P.B.T.D. _____

Date Completed 8-20-78 Oil Purchaser _____

CASING RECORD

Report of all strings set— surface, intermediate, production, etc.

Purpose of string	Size hole drilled	Size casing set (in O.D.)	Weight lbs/ft.	Setting depth	Type cement	Sacks	Type and percent additives
surface	12 1/4"	8-5/8"		300'		175	

LINER RECORD

PERFORATION RECORD

Top, ft.	Bottom, ft.	Sacks cement	Shots per ft.	Size & type	Depth interval

TUBING RECORD

Size	Setting depth	Packer set at

ACID, FRACTURE, SHOT, CEMENT SQUEEZE RECORD

Amount and kind of material used	Depth interval treated

INITIAL PRODUCTION

Date of first production _____ Producing method (flowing, pumping, gas lift, etc.) _____

RATE OF PRODUCTION PER 24 HOURS	Oil	Gas	Water	Gas-oil ratio

Disposition of gas (vented, used on lease or sold) _____ Producing interval (s) _____

INSTRUCTIONS: As provided in KCC Rule 82-2-125, within 90 days after completion of a well, one completed copy of this Drillers Log shall be transmitted to the State Geological Survey of Kansas, 4150 Monroe Street, Wichita, Kansas 67209. Copies of this form are available from the Conservation Division, State Corporation Commission, 3830 So. Meridian (P.O. Box 17027), Wichita, Kansas 66217. Phone AC 316-522-2206. If confidential custody is desired, please note Rule 82-2-125. Drillers Logs will be on open file in the Oil and Gas Division, State Geological Survey of Kansas, Lawrence, Kansas 66044.

Operator **F & M Oil Co., Inc.** DESIGNATE TYPE OF COMP.: OIL, GAS, DRY HOLE, SWDW, ETC.: **dry hole**

Well No. **1** Lease Name **Dreher**

S **23** T **16** R **19** W **WE**

WELL LOG

Show all important zones of porosity and contents thereof; cored intervals, and all drill-stem tests, including depth interval tested, cushion used, time tool open, flowing and shut-in pressures, and recoveries.

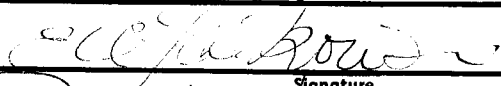
SHOW GEOLOGICAL MARKERS, LOGS RUN, OR OTHER DESCRIPTIVE INFORMATION.

FORMATION DESCRIPTION, CONTENTS, ETC. TOP BOTTOM NAME DEPTH

DST #1 3367-93, 30-30-30-30, rec. 15' M FP's 84-84, SIP's 964-945. #2, 3414-38, 30-30-30-30, rec. 20' M. FP's 54-54, SIP's 119-82. #3 3414-38, 30-30-30-30, rec. 70' MW FP's 63-73, SIP's 1058-911. #4 3508-62, 30-45-60-45. Rec. 200' MW BHP's 1068-1006, FP's 84-137 #5 3656-67, 30-45-69-45. Rec. 480' W no pressures			Sample tops: Anhydrite 1241 (+ 816) Topeka 3014 (- 957) Heebner 3310 (-1253) Toronto 3330 (-1273) Lansing 3358 (-1301) Reagan 3663 (-1606)	
			Electric log tops: Anhydrite 1241 (+ 816) Heebner 3310 (-1253) Toronto 3330 (-1273) Lansing 3357 (-1300) B/KC 36-3 (-1546) Reagan 3666 (-1609) Granite Wash 3680 (-1623) Granite 3690 (-1633) LTD 3700 (-1643)	
Figures Indicate Bottom of Formations:				
		20	Surface soil	
		50	Shale & clay	
		160	Shale w/streaks of post rock	
		197	Shale & sand	
		303	Shale	
		664	Shale	
		900	Dakota sand	
		1036	Shale & redbed	
		1241	Shale & redbed	
		1282	Anhydrite	
		1675	Shale	
		2731	Shale & lime	
		3113	Shale and lime	
		3393	Shale & lime	
		3420	Lime	
		3516	Lime	
		3630	Lime	
		3700	Lime	
		3700	T. D.	

USE ADDITIONAL SHEETS, IF NECESSARY, TO COMPLETE WELL RECORD.

Date Received


 Signature
 PRESIDENT
 Title
 8-30-78
 Date