

15-165-20645

**IMPORTANT**  
Kans. Geo. Survey request  
samples on this well.

State *Geological Survey*  
**KANSAS DRILLERS LOG**  
WICHITA BRANCH

S. 23 T. 16 R. 18 <sup>N</sup>W  
Loc. C ~~E2 NE~~ (11)  
County Rush

API No. 15 — 165 — 20,645  
County Number

Operator  
Kansas Oil Corp.

Address  
400 North Woodlawn Wichita, Kansas

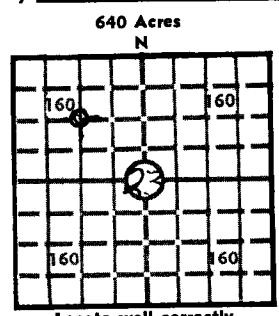
Well No. #1 Lease Name Dechant

Footage Location  
1320 feet from (N) (S) line 1320 feet from (E) (W) line

Principal Contractor Big Springs Geologist Lee Cornell

Spud Date 9-7-77 Total Depth 3373 P.B.T.D.

Date Completed 9-13-77 Oil Purchaser



Locate well correctly  
Elev.: Gr. 2050  
DF 2055 KB 2055

**CASING RECORD**

Report of all strings set — surface, intermediate, production, etc.

Purpose of string	Size hole drilled	Size casing set (in O.D.)	Weight lbs/ft.	Setting depth	Type cement	Sacks	Type and percent additives
<u>surface</u>	<u>12 1/4</u>	<u>8 5/8</u>	<u>28.5</u>	<u>425'</u>	<u>50-50 pos</u>	<u>250</u>	<u>2% gel 2% C<sub>10</sub></u>

**LINER RECORD**

**PERFORATION RECORD**

Top, ft.	Bottom, ft.	Sacks cement	Shots per ft.	Size & type	Depth interval

**TUBING RECORD**

Size	Setting depth	Packer set at

**ACID, FRACTURE, SHOT, CEMENT SQUEEZE RECORD**

Amount and kind of material used	Depth interval treated

**INITIAL PRODUCTION**

Date of first production		Producing method (flowing, pumping, gas lift, etc.)			
RATE OF PRODUCTION PER 24 HOURS	Oil	Gas	Water	Gas-oil ratio	CFPB
Disposition of gas (vented, used on lease or sold)			Producing interval (s)		

**INSTRUCTIONS:** As provided in KCC Rule 82-2-125, within 90 days after completion of a well, one completed copy of this Drillers Log shall be transmitted to the State Geological Survey of Kansas, 4150 Monroe Street, Wichita, Kansas 67209. Copies of this form are available from the Conservation Division, State Corporation Commission, 3830 So. Meridian (P.O. Box 17027), Wichita, Kansas 66217. Phone AC 316-522-2206. If confidential custody is desired, please note Rule 82-2-125. Drillers Logs will be on open file in the Oil and Gas Division, State Geological Survey of Kansas, Lawrence, Kansas 66044.

