

**KANSAS DRILLERS LOG**

State Geological Survey  
WICHITA, BRANCH

API No. 15 — 135 — 21,165  
County Number

S. 21 T. 16 R. 23 <sup>R</sup>/<sub>W</sub>

Loc. C NW NE

County Ness

Operator  
Palomino Petroleum

Address  
304 Insurance Building Wichita, Kansas 67202

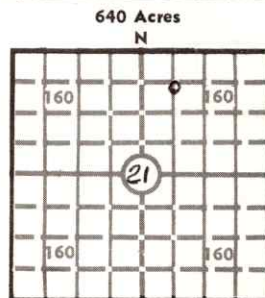
Well No. #2 Lease Name Scherzinger

Footage Location  
810 feet from (N) ~~Y~~ line 1980 feet from (E) ~~X~~ line

Principal Contractor Strata Drilling Company Geologist R. W. Watchous

Spud Date February 17, 1976 Total Depth 4480 P.B.T.D. 4470

Date Completed February 26, 1976 (rotary) Oil Purchaser Permian



Locate well correctly

Elev.: Gr. 2477

DF 2479 KB 2482

**CASING RECORD**

Report of all strings set — surface, intermediate, production, etc.

Purpose of string	Size hole drilled	Size casing set (in O.D.)	Weight lbs/ft.	Setting depth	Type cement	Sacks	Type and percent additives
Surface	12 1/4"	8 5/8"	20#	305'	Common	200	3% C.C. 2% Gel
Oil String	7 7/8"	5 1/2"	15.5#	4479'	Light Pozmix & Common	50 100	

**LINER RECORD**

**PERFORATION RECORD**

Top, ft.	Bottom, ft.	Sacks cement	Shots per ft.	Size & type	Depth interval
			4	G.G. D.P. Jets	4441-47

Size	Setting depth	Packer set at
2 3/8" OD	4466	-0-

**ACID, FRACTURE, SHOT, CEMENT SQUEEZE RECORD**

Amount and kind of material used	Depth interval treated
None	None

**INITIAL PRODUCTION**

Date of first production 3-22-76 Producing method (flowing, pumping, gas lift, etc.) Pumping

RATE OF PRODUCTION PER 24 HOURS	Oil	Gas	Water	Gas-oil ratio
	<u>35</u> bbls.	<u>MCF</u>	<u>None</u> bbls.	<u>CFPB</u>

Disposition of gas (vented, used on lease or sold) None Producing interval (s) 4441-4447

INSTRUCTIONS: As provided in KCC Rule 82-2-125, within 90 days after completion of a well, one completed copy of this Drillers Log shall be transmitted to the State Geological Survey of Kansas, 4150 Monroe Street, Wichita, Kansas 67209. Copies of this form are available from the Conservation Division, State Corporation Commission, 3830 So. Meridian (P.O. Box 17027), Wichita, Kansas 66217. Phone AC 316-522-2206. If confidential custody is desired, please note Rule 82-2-125. Drillers Logs will be on open file in the Oil and Gas Division, State Geological Survey of Kansas, Lawrence, Kansas 66044.

Operator Palomino Petroleum DESIGNATE TYPE OF COMP.: OIL, GAS, DRY HOLE, SWDW, ETC.: Oil

Well No. 2 Lease Name Scherzinger

S 21 T 16S R 23 W

**WELL LOG**

Show all important zones of porosity and contents thereof; cored intervals, and all drill-stem tests, including depth interval tested, cushion used, time tool open, flowing and shut-in pressures, and recoveries.

SHOW GEOLOGICAL MARKERS, LOGS RUN, OR OTHER DESCRIPTIVE INFORMATION.

FORMATION DESCRIPTION, CONTENTS, ETC.	TOP	BOTTOM	NAME	DEPTH
Cimarron Anhydrite	1821			
Heebner Shale	3847			
Lansing-Kansas City	3882			
Pawnee Limestone	4267			
Ft. Scott Limestone	4359			
Cherokee Shale	4380			
Cherokee Sand	4439			
Cherty Conglomerate	4461			
Mississippian Dolomite	4470			
E Log Total Depth	4476			
<p>D.S.T. #1 4340-4448 Open 2 hours 45 minutes (30-30-135-45), good blow throughout, recovered 1350' fluid--no water (360' clean oil, 900' muddy, gassy oil, 90' very heavily oil and gas cut mud and muddy oil). Flow Pressures 325# to 567#. 30" ISIP 926# plus; 45" ISIP 846# plus.</p>				

USE ADDITIONAL SHEETS, IF NECESSARY, TO COMPLETE WELL RECORD.

Date Received

*M. Scherzinger*  
Signature

Owner-Palomino Petroleum

Title

March 29, 1976

Date