

Kansas.

13 325-4E

Fullman

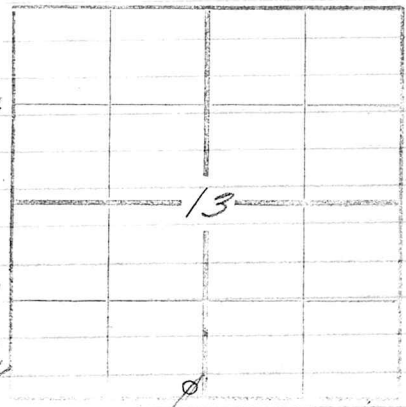
Alcorn Oil Company

se cor. sw 1/4
4

T. D.
Log No.

l. wh. pd 37
sl. bl. soft 75
l. gray hol 95
utr @ 82
shale gray 195
l. wh 205
sl. bl. 235
l. wh 255
sl. bl. 285
l. wh 305
sl 310
l. 360
R.R. (cut 15 1/2) 370
Pink rock 385
sh 420
l. utr. 450
sh 465
l. 580
shale 600
lime 615
shale 660
lime 672
shale 690
lime 700
shale 865
lime, cut 12 1/2 870
shale 885
lime 915
shale 935
lime 955
shale 965
lime 990
red shale 1000
slate 1030
lime 1045
shale 1080
lime 1090
shale 1110
lime 1140
shale 1160
shale 1200
lime 1305
shale 1310
lime 1415
shale 1455
lime 1540
shale 1590
lime 1605
shale, cut 10" 1610
shale 1625
red rock 1634

shale 1656
lime 1691
shale 1731
lime 1741
shale 1771 18 1/2
lime 1781
shale 1890 utr
sand (cut 8") 1950 "
slate 1960
sand 2005 utr
shale 2110
shale 2230 utr
shale 2310
" 2326
Top oil sand 2326
1st show oil 2332
I.B.W. 2349
oil sand 2390 H.F.W.
water sd. 2425
shale 2495
lime 2535
shale 2545
lime 2600
shale 2610
lime 2612
shale 2705
lime 2720
shale 2755
lime 2775
shale 2790
shale 2845
shale 2945
red shale 2955
shale 2960
black sh. 2983
oil sand 3005
shale bl. 3019
thick w/ green
shale & lime 3030
lime 3032



show of oil
6% at 2628

Cauc