

State Geological Survey

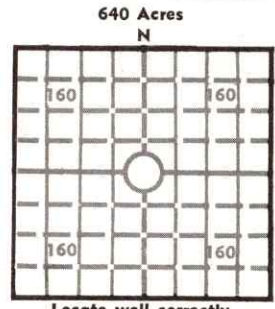
15-135-21349

WICHITA BRANCH  
KANSAS DRILLERS LOG

S. 32 T. 16 R. 25 <sup>W</sup>

Loc. NE/4 of SE/4

County Ness



Elev.: Gr. 2544

DF 2547 KB 2549

API No. 15 — 135-21 — 349  
County Number

Operator  
Moble C. Hoover

Address  
302 NBC Bldg., El Dorado, Ark.

Well No. 4 Lease Name Lillie

Footage Location  
660 feet from (N)  line 660 feet from (E)  line

Principal Contractor Abercrombie Drilling, Inc. Geologist J. Copeland Landes

Spud Date July 28, 1977 Total Depth 4501 P.B.T.D.

Date Completed October 13, 1977 Oil Purchaser Clear Creek, Inc.

CASING RECORD

Report of all strings set — surface, intermediate, production, etc.

Purpose of string	Size hole drilled	Size casing set (in O.D.)	Weight lbs/ft.	Setting depth	Type cement	Sacks	Type and percent additives
Surface	12 $\frac{1}{4}$	8-5/8	28	253	Common	190	3% CC, 2% gel
Production	7-7/8	5 $\frac{1}{2}$	15.5	4489	150 common 50 Pozmix		Gel & gilsonite

LINER RECORD

PERFORATION RECORD

Top, ft.	Bottom, ft.	Sacks cement	Shots per ft.	Size & type	Depth interval

Size	Setting depth	Packer set at
2-3/8	4507.5	

ACID, FRACTURE, SHOT, CEMENT SQUEEZE RECORD

Amount and kind of material used	Depth interval treated
500 gal. mud acid	4489-4501
250 gal. diesel oil w/Hi-flo & 1500 gal. Non-E	4489-4501

INITIAL PRODUCTION

Date of first production <u>October 13, 1977</u>	Producing method (flowing, pumping, gas lift, etc.) <u>Pumping</u>
RATE OF PRODUCTION PER 24 HOURS	Oil <u>10</u> bbls. Gas <u>MCF</u> Water <u>100</u> bbls. Gas-oil ratio <u>CFPB</u>
Disposition of gas (vented, used on lease or sold)	Producing interval (s) <u>4489-4501</u>

INSTRUCTIONS: As provided in KCC Rule 82-2-125, within 90 days after completion of a well, one completed copy of this Drillers Log shall be transmitted to the State Geological Survey of Kansas, 4150 Monroe Street, Wichita, Kansas 67209. Copies of this form are available from the Conservation Division, State Corporation Commission, 3830 So. Meridian (P.O. Box 17027), Wichita, Kansas 66217. Phone AC 316-522-2206. If confidential custody is desired, please note Rule 82-2-125. Drillers Logs will be on open file in the Oil and Gas Division, State Geological Survey of Kansas, Lawrence, Kansas 66044.

Operator **MOBLE C. HOOVER** DESIGNATE TYPE OF COMP.: OIL, GAS, DRY HOLE, SWDW, ETC.: **Oil**

Well No. **4** Lease Name **Lillie**

S 32 T 16 R 25 ~~W~~

**WELL LOG**

Show all important zones of porosity and contents thereof; cored intervals, and all drill-stem tests, including depth interval tested, cushion used, time tool open, flowing and shut-in pressures, and recoveries.

SHOW GEOLOGICAL MARKERS, LOGS RUN, OR OTHER DESCRIPTIVE INFORMATION.

FORMATION DESCRIPTION, CONTENTS, ETC.	TOP	BOTTOM	NAME	DEPTH
Clay and sand	0	200	Sample Tops:	
Shale		1245	Anhydrite	1897
Shale and sand		1645	Base Anhydrite	1931
Shale		1897	Heebner	3832
Anhydrite		1931	Toronto	3846
Shale		3300	Lansing	3870
Shale and lime		3685	Ft. Scott	4383
Lime and shale		3843	Warsaw Dolo.	4487
Shale and lime		4120		
Lime and shale		4209	"E" Log Tops:	
Shale and lime		4329	Anhydrite	1894
Lime and shale		4501 TD	Heebner	3830
			Toronto	3846
			Lansing	3868
			Ft. Scott	4383
			Miss. Spergen	4479
			Warsaw Dolo	4487

USE ADDITIONAL SHEETS, IF NECESSARY, TO COMPLETE WELL RECORD.

Date Received \_\_\_\_\_

*Moble C. Hoover*  
 Signature  
 Moble C. Hoover  
 Operator  
 Title  
 November 2, 1977  
 Date