

KANSAS DRILLERS LOG

State Geological Survey
WICHITA, BRANCH

S. 33 T. 16 R. 25 ~~XX~~ W

Loc. C NE NE

County Ness

API No. 15 — 135 — 20,556
County Number

Operator
Beardmore Oil, Inc. PHILLIPS PETROLEUM CO.

Address
BOX 287, GREAT BEND, KAN., 67530

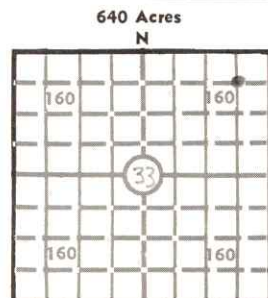
Well No. #2 Lease Name Sutton "CB"

Footage Location
660 feet from (N) line 660 feet from (E) line

Principal Contractor RAINS & WILLIAMSON Geologist J. ZORGER

Spud Date 1-11-72 Total Depth 4472 P.B.T.D. P&A

Date Completed 1-21-72 Oil Purchaser NONE



Elev.: Gr. 2504

DF 2506 KB 2509

CASING RECORD

Report of all strings set — surface, intermediate, production, etc.

Purpose of string	Size hole drilled	Size casing set (in O.D.)	Weight lbs/ft.	Setting depth	Type cement	Sacks	Type and percent additives
SURFACE	12 1/4"	8 5/8"	28	248	common	175	2% ACC., 2% GEL.

LINER RECORD

PERFORATION RECORD

Top, ft.	Bottom, ft.	Sacks cement	Shots per ft.	Size & type	Depth interval

TUBING RECORD

Size	Setting depth	Packer set at

ACID, FRACTURE, SHOT, CEMENT SQUEEZE RECORD

Amount and kind of material used	Depth interval treated

INITIAL PRODUCTION

Date of first production		Producing method (flowing, pumping, gas lift, etc.)			
RATE OF PRODUCTION PER 24 HOURS	Oil bbls.	Gas MCF	Water bbls.	Gas-oil ratio CFPB	
Disposition of gas (vented, used on lease or sold)			Producing interval (s)		

INSTRUCTIONS: As provided in KCC Rule 82-2-125, within 90 days after completion of a well, one completed copy of this Drillers Log shall be transmitted to the State Geological Survey of Kansas, 4150 Monroe Street, Wichita, Kansas 67209. Copies of this form are available from the Conservation Division, State Corporation Commission, 3830 So. Meridian (P.O. Box 17027), Wichita, Kansas 66217. Phone AC 316-522-2206. If confidential custody is desired, please note Rule 82-2-125. Drillers Logs will be on open file in the Oil and Gas Division, State Geological Survey of Kansas, Lawrence, Kansas 66044.

Operator PHILLIPS PETROLEUM CO. DESIGNATE TYPE OF COMP.: OIL, GAS, DRY HOLE, SWDW, ETC.:

Well No. 2 Lease Name SUTTON "CB" DRY HOLE

S 33 T 16 R 25 W

WELL LOG

Show all important zones of porosity and contents thereof; cored intervals, and all drill-stem tests, including depth interval tested, cushion used, time tool open, flowing and shut-in pressures, and recoveries.

SHOW GEOLOGICAL MARKERS, LOGS RUN, OR OTHER DESCRIPTIVE INFORMATION.

FORMATION DESCRIPTION, CONTENTS, ETC.	TOP	BOTTOM	NAME	DEPTH
SURFACE CLAY & SAND	0	42	ANHYDRITE	1859
SHALE	42	690	HEEBNER	3793
SAND	690	775	LANSING	3834
SHALE	775	1330	B.K.C.	4146
SAND	1330	1610	FT. SCOTT	4337
SHALE & RED BED	1610	1859	CHEROKEE	4358
ANHYDRITE	1859	1890	MISS.	4440
SHALE	1890	2050		
SHALE & RED BED	2050	2420		
LIME & SHALE	2420	4005		
LIME - RTD	4005	4472		
CORE #1	4443	4455		
CORE #2	4455	4462		
DST #1 - 30-30-60-60 - BHP-712-703-FP-45-90 - 67' mud	4377	4455		
DST #2 - 30-30-60-60 - BHP-1080-1171-FP-54-117 -	4377	4462		
145' SOC M				
DST #3 - 30-30-60-60 - BHP-1180-1171-FP-54-234,	4377	4472		
180' HOSCM, 120' SOC WATERY MUD				

USE ADDITIONAL SHEETS, IF NECESSARY, TO COMPLETE WELL RECORD.



C. D. Johnson
 Signature
 Prod. Supt.
 Title
 11-14-73
 Date