

**KANSAS**

Ellis

Section 5 Township 13 Range 17W

Well No. 1 Reede

Company W. L. Hartman

Catherine  
NORTH

10


WEST

EAST

SOUTH

Sec. 5 Twp. 13 R. 17W

Well No. #1 Reede Farm

W. L. Hartman

Company

Catherine Pool

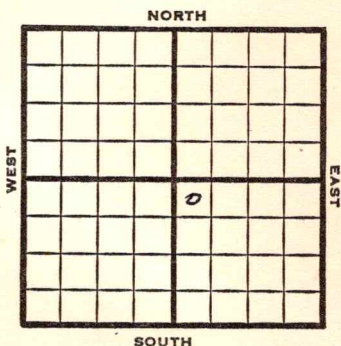
330' Ft. from N. Line

\_\_\_\_\_ Ft. from S. Line

\_\_\_\_\_ Ft. from E. Line

330' Ft. from W. Line

NW SE



1949

**Elev 2049'**

REPORT

6/8 Location

6/15 "

6/21 "

6/28 8"@ 138' ;  
Drlg 2961'

7/6 **Lansing 3337'**  
**Arbuckle 3595'**

TD 3601'

5" @ 3596'

7/12 TD 3621'  
30' oil  $\neq$  15' W 12 hrs.

7/20 Plug 3580'  
24 shots 3424-36  
500 acid  
Swb 8 bbls oil PH

7/27 "

8/3 "

8/10 "

8/17 "

8/24 TD 3621'  
**Lans 3337'**  
**Arb. 3595'**  
5"@ 3596'  
Perf Lans  
500 acid  
Pump 47 Oil Pot  
307 Gr.  
Comp

**COMPLETED**

Ellis County Kansas State

Map No. Sec. 5 Twp. 13 R. 17W

Well No. 1 Reede

W. L. Hartman Company

Contractor

NW SE

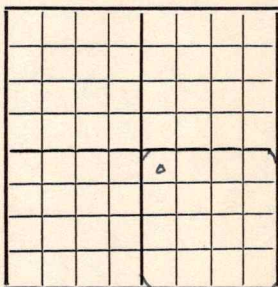
FIRST REPORT SECTION PLAT

330 Ft. from N. Line

Ft. from S. Line

Ft. from E. Line

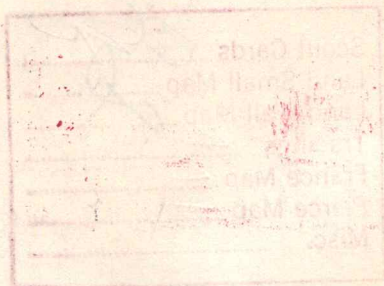
330 Ft. from W. Line



Catherine Pool

Remarks:

Location



Date JUN 8 1949

Scout S. J. LEWIS

Map No. K 71 Sec. 5 Twp. 13 R. 17W

Well No. 1 Reede

W. L. Hartman Company

COMPLETE Contractor

NW SE

E. 2049

SECTION PLAT

330 Ft. from N. Line

\_\_\_\_\_ Ft. from S. Line

\_\_\_\_\_ Ft. from E. Line

330 Ft. from W. Line

		o	

Ellis County

RECORD

Location \_\_\_\_\_

Cased \_\_\_\_\_ in., \_\_\_\_\_ ft.

Rig up \_\_\_\_\_

Sand \_\_\_\_\_

Drilling and Remarks:

Gas \_\_\_\_\_

Lane 3337

Oil \_\_\_\_\_

Act 3095.

Total Depth 3621

5" 03596

Prof Lane.

500 acid

Pump 470 oil Act

PRODUCTION

1st 24 hrs. Nat. \_\_\_\_\_

1st 24 hrs. after shot \_\_\_\_\_

Gas \_\_\_\_\_ Cu. Ft.

Dry Hole \_\_\_\_\_

Abandoned \_\_\_\_\_

Date

30 2/2

AUG 24 1949 19

S. J. LEWIS Scout