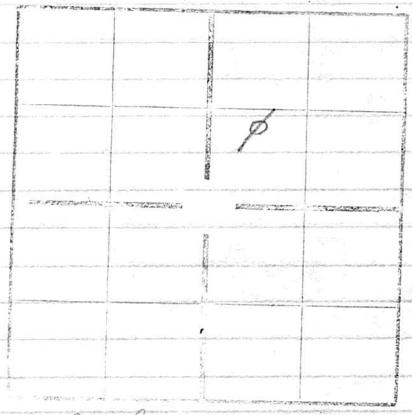


Cowley Co. Kas

Sec. 24 T. 32 R. 9
 Farm KAKAK well No. 6
 Emerald Oil Company
 Elev. T. D. 1493
 Log No.

20822



Drill - Comm Mar-26-1923
 Comp opt. 23-1923

sil	5	sh	720
li	20	sdly sh	755
li	90	sh	795
li	120	sh	800
sdly sh	125	li	805
sh	130	sl	840
Rock Red	135	li	845
li	145	sh	850
sh	155	sl	880
li	165	li	905
Rock Red	170	sdly li	915
li	180	li	950
li	200	sl	955
li	220	li	965
sh	225	li	985
Rock Red	230	sh	990
li	250	Rock Red	1000
sh	255	sdly sh	1025
li	265	sh	1045
sh	270	li	1055
li	295	sh	1070
li	310	li	1075
li	325	li	1150
sh	335	sh	1170
li	355	sh	1200
li	365	sh	1220
Rock Red	395	li	1230
li	400	li	1255
Rock Red	403	sh	1275
li	407	sh	1280
sh	415	li	1300
li	430	li	1315
sh	440	sh	1320
li	455	li	1345
sh	470	li	1350
Rock Red	479	sh	1363
li	519	li	1402
sh	525	sdly sh	1452
li	530	li	1457
li	535	sdly sh	1477
sh	545	sh sd	1487
li	548	li	1493 TD
sh	555		
li	560		
sh	575		
li	595		
sh	605		
sh	625		
li	630		
sh	665		
Gas sand	670		
sh	675		
ll	680		

Csg. Rec

12 1/2"	23'	left in well
10"	400'	pulled
8 1/2"	1070'	"
6 7/8"	1367'	"

Dys cannot
 locate the well
 in field.