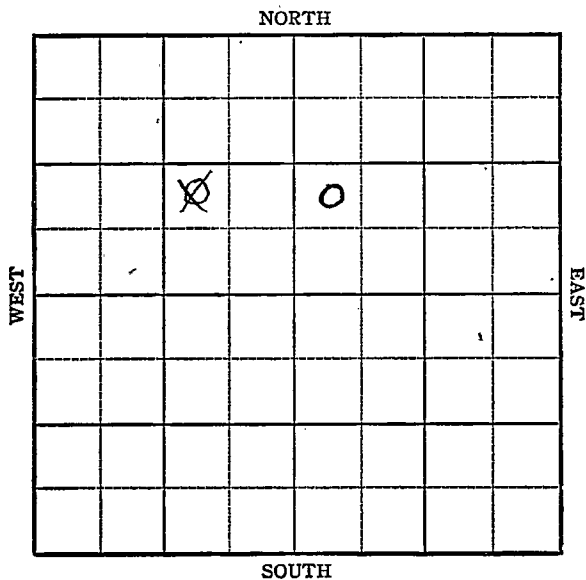


Section 10 Township 17 Range 13W

Well No. 2 Underwood

Company Lindas Oil



Sec. 10 Twp. 17 R. 13-W ✓

Well No. #2 Underwood Farm

Lindas Oil Company
Ainsworth

 Ft. from N. Line

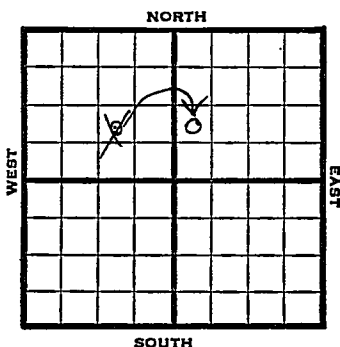
990 Ft. from S. Line

990 Ft. from E. Line

 Ft. from W. Line

~~NW SE NW~~

NW SW NW



1948

Elev. 2208' REPORT

8/11

12" @ 250'
Anhy 799'
Drlg 3176'

8/18

Arb. 3336-44'
TD 3344'
6" @ 3336'

8/25

"

9/1

"

9/8

Arb 3336'
6" @ 3336'
TD 3344'
500 acid
Pump 426 oil Pot.
Gr. 36°

COMPLETED

Barton County Kansas State

Map No. _____ Sec. 10 Twp. 17 R. 13W

Well No. 2 Underwood

Lindas Oil Company

FIRST REPORT

_____ Contractor

NW SE NW

SECTION PLAT

_____ Ft. from N. Line

990 Ft. from S. Line

990 Ft. from E. Line

_____ Ft. from W. Line

Ainsworth Pool

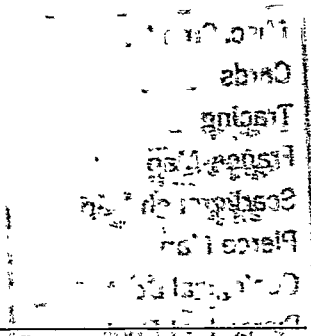
Remarks:

12" @ 250 Anhy 799 drlg. 3176

Date

AUG 11 1948

Scout S. J. LEWIS



Barton County Kansas State

Map No. 73 Sec. 10 Twp. 17 R. 13W

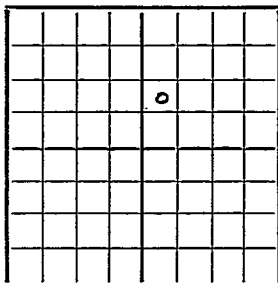
Well No. 2 Underwood

Lindas Oil Company

CORRECTION Contractor

NW SW NW

SECTION PLAT



 Ft. from N. Line

990 Ft. from S. Line

 Ft. from E. Line

330 Ft. from W. Line

Ainsworth Pool

Remarks:

Reported NW SE NW

*This is one you asked about
on Sep 16/48.*

MISSOURI
COUNTY
RECORDS
77

Date
SEP 22 1948

Scout S. J. LEWIS

Barton County Kansas State

Map No. 73 Sec. 10 Twp. 17 R. 13W

Well No. 2 Underwood

Lindas Oil Company

COMPLETE Contractor

NW SE NW

E. 2208.
SECTION PLAT

 Ft. from N. Line
990 Ft. from S. Line
990 Ft. from E. Line
 Ft. from W. Line

			6				

Ainsworth Pool

Remarks:
Ar 3286
6 "03336"
ND 3344
500 acud
Pony 426 oil Pt
36 1/2