

# KANSAS

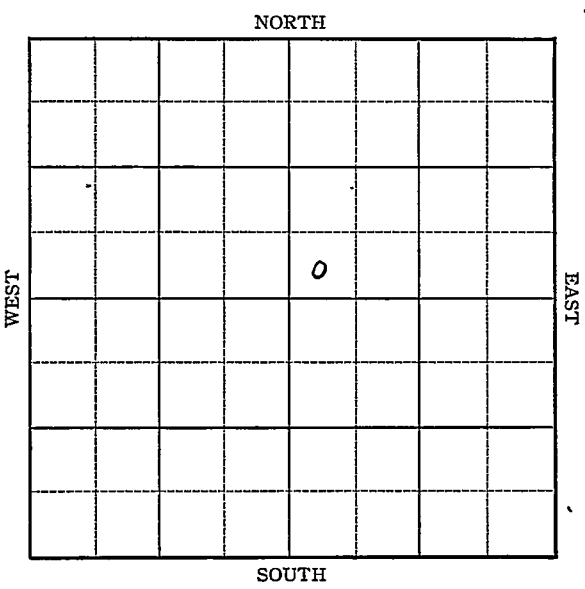
Russell

FORM 51 5M 1-42 PETROL

Section 10 Township 14 Range 14-W

Well No. #3-Newcomer

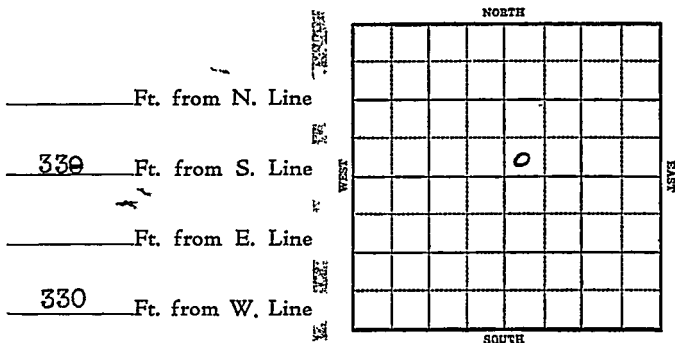
Company Stanolind



Sec. 10 Twp. 14 R. 14-W

Well No. #3 New comer Farm

Stanolind Company



1943 *Elev. 1850* R E P O R T

8/11 Derrick  
 8/18 "  
 8/25 Drlg. 290'  
 9/1 8" @ 540  
 Anhy' 830  
 Drlg. 2135'  
 9/8 Topeka 2708  
 Drlg. 3185'  
 9/15 Lans 2999  
 SO 3000-02, 3005-15, 3021-27  
 Sovy 3261  
 T.S. 3266  
 5" @ 3258  
 Rsut  
 9/22 "  
 9/29 Plug 3240  
 83 shots 3021-46,  
 6500 acid  
 10/6 Swab 7 water trace oil per hr  
 PB

OVER

1943

10/13 Sooy 3261

5" @ 3258

Depth Pot 2280 oil & 720 water

T.D. 3266

Gravity 40

**COMPLETED**

KANSAS

Map No. 72 Sec. 10 Twp. 14 R. 14W

Well No. 3 Newcomer

Stanolind Company

FIRST REPORT Contractor

SW NE

SECTION PLAT

\_\_\_\_\_ Ft. from N. Line

330 Ft. from S. Line

\_\_\_\_\_ Ft. from E. Line

330 Ft. from W. Line


WITT POOL

Location \_\_\_\_\_

Rig up \_\_\_\_\_

Drilling and Remarks:

Derrick

RECORD

Cased \_\_\_\_\_ in., \_\_\_\_\_ ft.

Sand \_\_\_\_\_

Gas \_\_\_\_\_

Oil \_\_\_\_\_

Total Depth \_\_\_\_\_

PRODUCTION

1st 24 hrs. Nat. \_\_\_\_\_

1st 24 hrs. after shot \_\_\_\_\_

Gas \_\_\_\_\_ Cu. Ft.

Dry Hole \_\_\_\_\_

Abandoned \_\_\_\_\_

Date

AUG 1 1 1943

19

S. J. LEWIS

Scout

