

**IMPORTANT**  
 Kans. Geo. Survey request  
 samples on this well.

State Geological Survey  
 WICHITA, KANSAS

**KANSAS DRILLERS LOG**

S. 24 T. 28 R. 18 <sup>E</sup>  
 Loc. 165EWL165NSL N<sup>24</sup>  
 County Neosho

API No. 15 — 133 — 21708  
 County Number

Operator Dora Cruz Petroleum

Address 6312 S. Helena, Spokane WA.

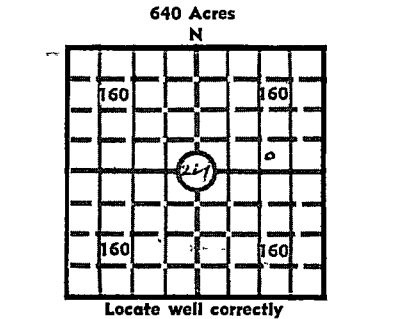
Well No. G-2 Lease Name Cherney

Footage Location  
 feet from (N) (S) line \_\_\_\_\_ feet from (E) (W) line \_\_\_\_\_

Principal Contractor ASM Drilling Geologist \_\_\_\_\_

Spud Date 6-21-80 Total Depth 735 P.B.T.D. \_\_\_\_\_

Date Completed 6-22-80 Oil Purchaser Sq. Dool



Elev.: Gr. \_\_\_\_\_

DF \_\_\_\_\_ KB \_\_\_\_\_

**CASING RECORD**

Report of all strings set — surface, intermediate, production, etc.

Purpose of string	Size hole drilled	Size casing set (in O.D.)	Weight lbs/ft.	Setting depth	Type cement	Sacks	Type and percent additives
Casing	5 7/8"	2 7/8"	6.5	735	Port	85	1% C
Surface	7 1/2"	6 1/2"	20	60	Port	8	1% C

**LINER RECORD**

**PERFORATION RECORD**

Top, ft.	Bottom, ft.	Sacks cement	Shots per ft.	Size & type	Depth interval

TUBING RECORD		
Size	Setting depth	Packer set at
1 1/2"		

**ACID, FRACTURE, SHOT, CEMENT SQUEEZE RECORD**

Amount and kind of material used	Depth interval treated
Water + sand 7000 #	716 - 728

**INITIAL PRODUCTION**

Date of first production <u>8-1-80</u>	Producing method (flowing, pumping, gas lift, etc.) <u>Pumping</u>
RATE OF PRODUCTION PER 24 HOURS	Oil <u>1/2</u> bbls. Gas <u> </u> MCF Water <u>8</u> bbls. Gas-oil ratio _____ CFPB
Disposition of gas ( <u>vented</u> ) used on lease or sold)	Producing interval (s) <u>Barthesville 716-728</u>

INSTRUCTIONS: As provided in KCC Rule 82-2-125, within 90 days after completion of a well, one completed copy of this Drillers Log shall be transmitted to the State Geological Survey of Kansas, 4150 Monroe Street, Wichita, Kansas 67209. Copies of this form are available from the Conservation Division, State Corporation Commission, 3830 So. Meridian (P.O. Box 17027), Wichita, Kansas 66217. Phone AC 316-522-2206. If confidential custody is desired, please note Rule 82-2-125. Drillers Logs will be on open file in the Oil and Gas Division, State Geological Survey of Kansas, Lawrence, Kansas 66044.

Operator *Vera Cruz*

DESIGNATE TYPE OF COMP.: OIL, GAS, DRY HOLE, SWDW, ETC.

*oil*

Well No. *A-2*

Lease Name *Cheyney*

*S 24 T 28 S R 18 E*

**WELL LOG**

Show all important zones of porosity and contents thereof; cored intervals, and all drill-stem tests, including depth interval tested, cushion used, time tool open, flowing and shut-in pressures, and recoveries.

SHOW GEOLOGICAL MARKERS, LOGS RUN, OR OTHER DESCRIPTIVE INFORMATION.

FORMATION DESCRIPTION, CONTENTS, ETC.	TOP	BOTTOM	NAME	DEPTH
<i>Shale &amp; Limestone Oil Sand Shale</i>			<i>Bartlesville</i>	

USE ADDITIONAL SHEETS, IF NECESSARY, TO COMPLETE WELL RECORD.

Date Received

*G. Insoop*

Signature

*Sec.*

Title

*8-5-80*

Date

*31*