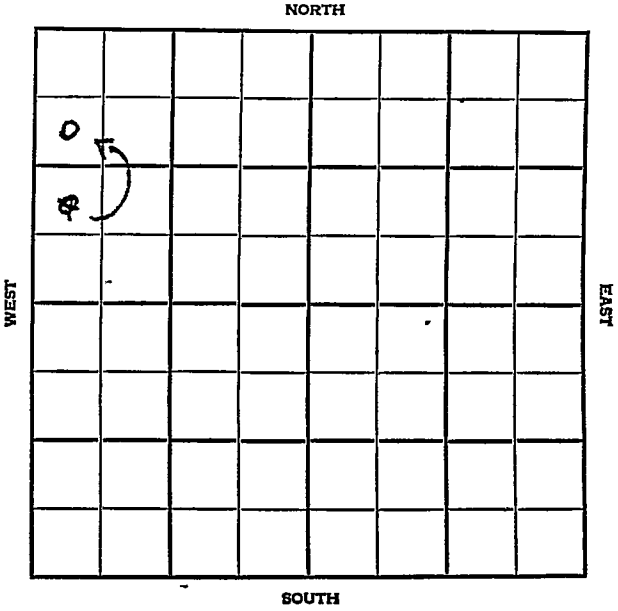


Section 25 Township 14 Range 13W

Well No. 4 H. A. Rogg

Company V. D. Sidey



Russell KANSAS

SEC. 25 TWP. 14 R. 13 W

WELL NO. # 4 H. A. Rogg FARM

COMPANY V. D. Sidey

CONTRACTOR Co. tools

Hall-Gurney Pool

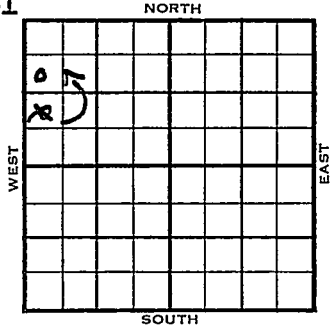
990 Ft. from N. Line

990 Ft. from S. Line

Ft. from E. Line

330 Ft. from W. Line

SW NW NW
NW SW NW



1955 ELEVATION 1717' REPORT

1/5 RUR
2/2 Spud 1-4-55
OK1 Well
TD 3158'
8" @ 104'
Heeb 2785' Lans 2859 Arb. 3152'
TD 3158'
5" @ 3152'
CO to 3158' 500 A S/ 7 boph 8 hr.
Comp 25 bopd.

COMPLETED

SCOUT TICKET DX-201

Kansas

SEC.	TWP.	R.
25	14	13W

WELL NO.

4 H. A. Rogg FARM
COMPANY

V. D. Sidey
CONTRACTOR

CORRECTION

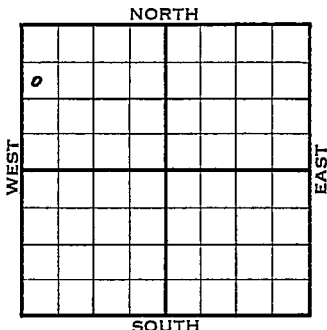
SW NW NW

990 FT. FROM N. LINE

FT. FROM S. LINE

FT. FORM E. LINE

330 FT. FROM W. LINE



Russell County

LOCATION
 RIG UP
 DRILLING AND REMARKS:

Reported
NW SW NW

RECORD	CASED IN., FT.
	SAND
	GAS
	OIL
PRODUCTION	TOTAL DEPTH
	1ST 24 HRS. NAT.
	1ST 24 HRS. AFTER SHOT
	GAS CU. FT.
	ABANDONED

DATE	SCOUT
JAN 1 2 1955	FABEN GIL STRAP

County Russell State Kansas

Sec. 25 (Blk. 14) (Sur. Rge.) 13W Map No.

Operator V. D. Sidey

Well No. 4 Farm H. A. Rogg

Elev. 1717 Location SW NW NW

9							
COMPLETE							

990 Ft. From N Line NW

330 Ft. From W Line Quarter

Ist. Report

Completion FEB 2 1955

Remarks Hall-Gurney Pool

Co. tools

Spudding Date 1-4-55

Drlg. Data Oil well TD 3158

8" @ 104 Heeb. 2785 Lans. 2859

Arb. 3152 TD 3158 5" @ 3152

CO to 3158 500 A S/ 7 boph 8 hr.

Comp. 25 bopd