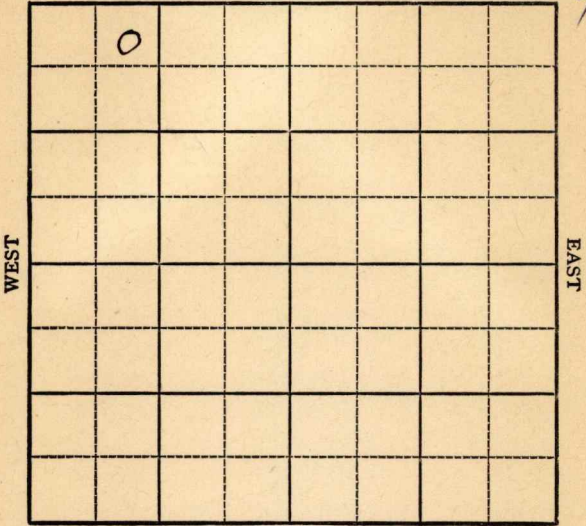


Section 14 Township 29 Range 5E

Well No. 1 Speer

Company W L Hartman

Misc.
NORTH



SOUTH

Sec. 14 Twp. 29 R. 5E

Well No. 1 Speer Farm

W.L. Hartman Company

Misc.

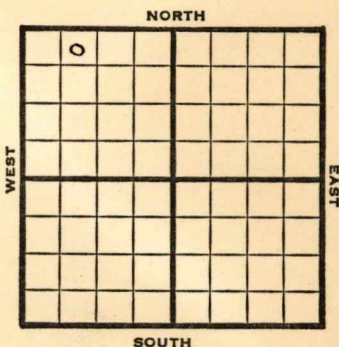
330 Ft. from N. Line

_____ Ft. from S. Line

_____ Ft. from E. Line

990 Ft. from W. Line

NE NW NW



1948 **Eli 1327'**

REPORT

9/1 8" @ 81'
Drlg. 1597'

9/8 **KC 2167'**
Miss 2806'
TD 2821'
5" @ 2821'

9/14 "

9/21 500 acid

9/29 TD 2870'
Miss 2806'
Aband.

ABANDONED

Butler County Kansas State

Map No. Sec. 14 Twp. 29 R. 5E

Well No. 1 Speer

W. L. Hartman Company

FIRST REPORT

Contractor

NE NW NW

SECTION PLAT

330									

330 Ft. from N. Line

Ft. from S. Line

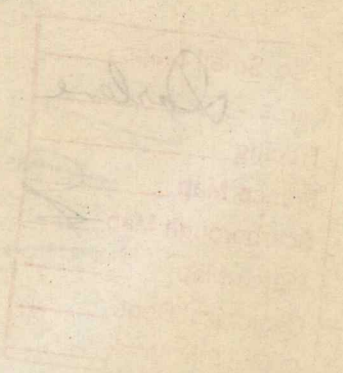
Ft. from E. Line

990 Ft. from W. Line

Miscellaneous

Remarks:

8" @ 81 drlg. 1597



Date SEP 1 1948

Scout S. J. LEWIS

Map No. 11 Sec. 14 Twp. 29 R. 5E

Well No. 1 Speer

W. L. Hartman Company

ABANDONED

Contractor

NE NW NW

E 11327

SECTION PLAT

330 Ft. from N. Line

_____ Ft. from S. Line

_____ Ft. from E. Line

990 Ft. from W. Line

0			

Butler County

Location _____

Rig up _____

Drilling and Remarks:

Miss 2806

RECORD

Cased _____ in., _____ ft.

Sand _____

Gas _____

Oil _____

Total Depth 2870

PRODUCTION

1st 24 hrs. Nat. _____

1st 24 hrs. after shot _____

Gas _____ Cu. Ft.

Dry Hole _____

Abandoned _____

Date

SEP 29 1948

19

S. J. LEWIS

Scout