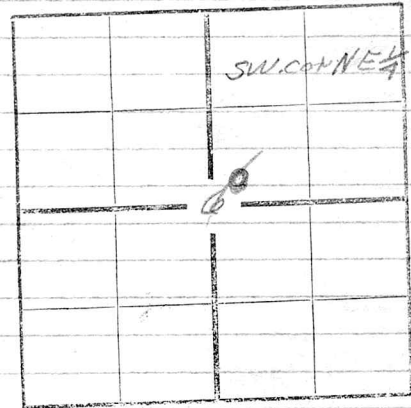


Cowley Co Kas. *Drap.*  
(charted in files)

7092

Sec. 6 Twp. 32 R. 5  
Farm *Dodgeon* No. 1  
*Ark Fuel Oil* Company  
Elev. \_\_\_\_\_ T. D. 2336  
Log No. \_\_\_\_\_



Comm. Drilling June 19-1923  
Comp. 1. Sept. 3-1923

*Osgood*

soil		3	li	1265
li		30	li	1300
Rock R		33	sh	1310
li		50	li	1370
sh		70	sh	1375
li		100	li	1385
sh		110	sd HFW	1410
sd	3BW	130	sh	1425
li	sd	160	li	1440
sh		170	sh	1450
li		200	li	1460
sh		220	sd H <sub>2</sub> O	1485
li		230	li HFW	1520
li		270	sh	1530
li		280	li	1545
sh		290	sh	1580
li		300	li	1590
sh		310	sh	1610
li		335	Rock R	1615
Rock R		370	sh	1635
li		375	sh	1700
sh		395	Rock Red	1705
li		410	sh	1725
sh		435	sd HFW	1745
li		480	sh HFW	1765
sh		485	sd	1775
li		510	sh sd	1800
li		530	sh	1875
sh		560	sd 17BW	1920
li		580	sd 1700	1930
sh		590	sd HFW	1940
li		600	sd	1980
sh		630	sd	2030
li		635	sd	2053
sh		680	sd	2120
li		685	li	2135
sh		700	li	2140
Rock R		710	sd	2320
li	sd	735	sand oil	2336 T.D.
sh		750		
sh		830		
li		840		
sh		860		
li		890		
sh		950		
li		960		
sh	3BW	1000		
li		1045		
sh		1100		
li		1110		
sh	5BW	1200		
li		1240		
sh		1255		

15 1/2"	270'
12 1/2"	750'
10"	1630'
8 1/2"	1770'
6"	2140'
5"	2319'