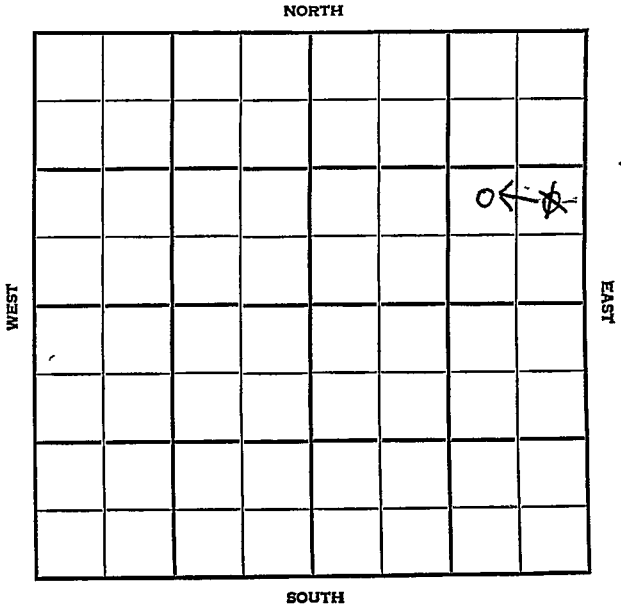


Section 32 Township 34 Range 3 E

Well No. # 111 Baird-Drennen

Company Alladdin Pet.



**Cowley KANSAS**

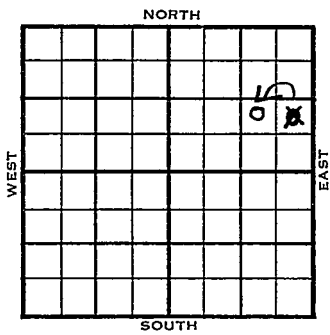
SEC.	TWP.	R.
32	34	3E

WELL NO. 14 Baird-Drennen FARM

COMPANY Aladdin Petr.

CONTRACTOR Crowe Drlg.  
Gibson Pool

\_\_\_\_\_ Ft. from N. Line  
~~990-1065~~ \_\_\_\_\_ Ft. from S. Line  
~~330-990~~ \_\_\_\_\_ Ft. from E. Line  
 \_\_\_\_\_ Ft. from W. Line



~~NW~~  
~~NE SE NE~~

	ELEVATION	REPORT
--	-----------	--------

1954

7/14 Spud 7-6-54  
 8" @ 125'  
 Stal 2227', Layton 2670'  
 Drlg. 2750'

8/4 Spdg 7-6-54  
 Oil well  
 TD 3399  
 8" @ 125'  
 stal 2227 Layton 2670 KC 2856  
 Marm 3063 Bart. 3372  
 TD 3399  
 5" @ 3383 CO to 3399 S/ 2 bo  
 6 hr. frac Comp. 699 bopd

**COMPLETED**



Kansas

Map No. \_\_\_\_\_ Sec. 32 Twp. 34 R. 3E

Well No. 14 Baird-Drennen

Aladdin Pet.

Company \_\_\_\_\_

**CORRECTION**

Contractor \_\_\_\_\_

NW SE NE

SECTION PLAT

\_\_\_\_\_ Ft. from N. Line

1065 Ft. from S. Line

990 Ft. from E. Line

\_\_\_\_\_ Ft. from W. Line


Cowley County

Location \_\_\_\_\_

Rig up \_\_\_\_\_

Drilling and Remarks:

Reported

NE SE NE

RECORD

Cased \_\_\_\_\_ in., \_\_\_\_\_ ft.

Sand \_\_\_\_\_

Gas \_\_\_\_\_

Oil \_\_\_\_\_

Total Depth \_\_\_\_\_

PRODUCTION

1st 24 hrs. Nat. \_\_\_\_\_

1st 24 hrs. after shot \_\_\_\_\_

Gas \_\_\_\_\_ Cu. Ft.

Dry Hole \_\_\_\_\_

Abandoned \_\_\_\_\_

Date

JUL 21 1954

J. G. McGEHEE

19

Scout

