

STATE	Georgia	
COUNTY	Stafford	COMPANY Atlantic
BLOCK	4050 N1	FARM Neill
SEC.	27	WELL NO. 2
T.	245	P
	140	TOTAL DEPTH
		4257
CONTRACTOR		
COMMENCED 6-26-44		
COMPLETED 7-22-44		
REMARKS		
ALTIMETER 1776		
PRODUCTION		
P.C. No. No.		

CASING RECORD

8" O 882'

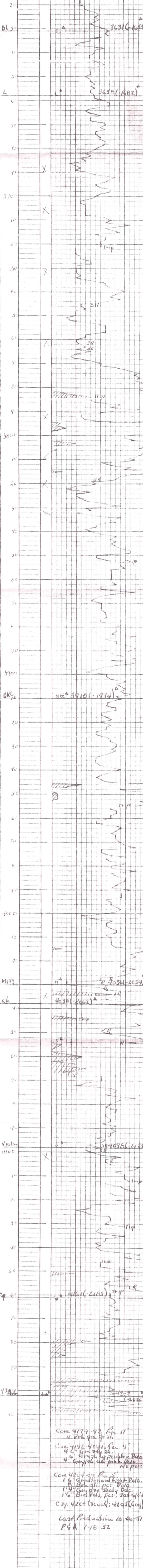
5" O 4200'

**V.G.S. LITHO**

SHOT QUARTS BETWEEN

TIME RATE SCALE: 1/10" = MINUTES

FORM 450 - In stock and for sale by Rose-Martin Co., Tulsa



CORE 4174-92 Run 11'  
 11' 2nd 9m 7p 7h

CORE 4192 4201 Run 4'  
 4' 6" 9m 7p 7h  
 6" 5m 7p 7h  
 4" 5m 7p 7h

CORE 4204-09 Run 4'  
 1 6" 9m 7p 7h  
 1 4" 9m 7p 7h  
 1 2" 9m 7p 7h  
 1 0" 9m 7p 7h

CORE 4205 (COR)  
 4205 (COR)

Last Production 10-20-51  
 P&K 1-18-52