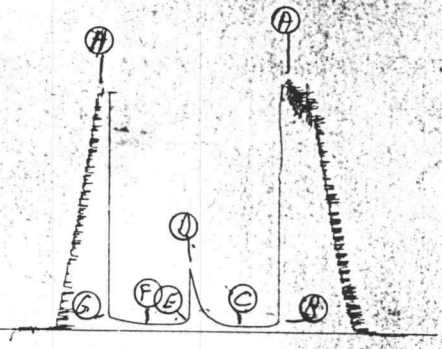


1866

TR 4538

Benev
DST 1

I

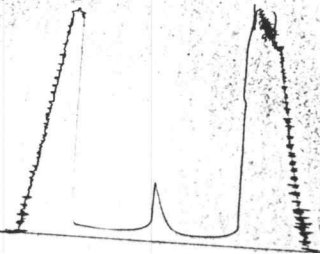


13629

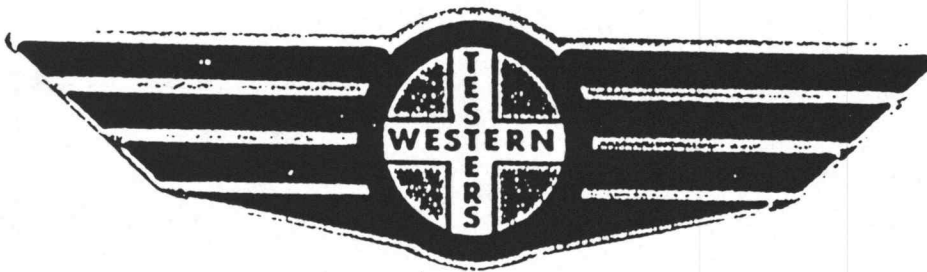
KT-14538

Behest
DST.

0



FORMATION TEST REPORT



Home Office:

Wichita, Kansas 67201

P.O. Box 1599

Phone (316) 262-5861

COMPANY BEREN CORPORATION LEASE & WELL NO. KOELLING #4 SEC. 22 TWP. 10S RGE. 15W TEST NO. 1 DATE 9/9/88

WESTERN TESTING CO. INC.
SUBSURFACE PRESSURE SURVEY

DATE : 09-09-88
CUSTOMER : BEREN CORPORATION
WELL : 34 TEST: 1
ELEVATION : 1826
SECTION : 22
RANGE : 15W COUNTY : OSBORNE
GAUGE SN# : 1566 RANGE : 4300
TICKET : 14538
LEASE : KOELLING
GEOLOGIST : P. SAM HOUSTON
FORMATION : TOPEKA
TOWNSHIP : 10S
STATE : KS
CLOCK : 12

INTERVAL FROM : 2715 TO : 2755 TOTAL DEPTH : 2755
DEPTH OF SELECTIVE ZONE :
PACKER DEPTH : 2710 SIZE : 6.75
PACKER DEPTH : 2715 SIZE : 6.75
PACKER DEPTH : SIZE :
PACKER DEPTH : SIZE :

DRILLING CON. : STRATA DRLG.
MUD TYPE : CHEMICAL VISCOSITY : 32
WEIGHT : 9.3 WATER LOSS (CC) :
CHLORIDES (PPM) : 10000
JARS-MAKE : SERIAL NUMBER :
DID WELL FLOW ? : NO REVERSED OUT ? : NO

DRILL COLLAR LENGTH : 0 FT I.D. inch : 0.00
WEIGHT PIPE LENGTH : 837 FT I.D. inch : 2.70
DRILL PIPE LENGTH : 1856 FT I.D. inch : 3.80
TEST TOOL LENGTH : 22 FT TOOL SIZE : 5.50
ANCHOR LENGTH : 40 FT ANCHOR SIZE : 5.50
SURFACE CHOKE SIZE : .75 IN BOTTOM CHOKE SIZE : .75
MAIN HOLE SIZE : 7.875 IN TOOL JOINT SIZE : 4.5XH

BLOW COMMENT #1 : WEAK BLOW DEAD IN 5 MINUTES ON INITIAL FLOW PERIOD.
BLOW COMMENT #2 : NO BLOW ON FINAL FLOW PERIOD.
BLOW COMMENT #3 :
BLOW COMMENT #4 :

RECOVERED . . . 10 FT OF: DRLG. MUD W/SHOW OF OIL IN TOOL

Total Barrels Fluid = 0.07
Total Fluid Prod Rate = 1.70 BFPD
Indicated Wtr Rate = 0.17 BWPD

REMARK 1 :
REMARK 2 :
REMARK 3 :
REMARK 4 :

SET PACKER(S) : 7:15PM TIME STARTED OFF BOTTOM : 9:15PM

WELL TEMPERATURE : 103

INITIAL HYDROSTATIC PRESSURE

INITIAL FLOW PERIOD MIN: 30 (A) 1417 (B) 38 PSI TO (C) : 38

INITIAL CLOSED IN PERIOD MIN: 36 (D) 355 (E) 44 PSI TO (F) : 44

FINAL FLOW PERIOD MIN: 30 (G) 80

FINAL CLOSED IN PERIOD MIN: 30 (H) 1367

FINAL HYDROSTATIC PRESSURE

COMPANY : BEREN CORPORATION
 WELL : 34
 GAUGE # : 1566
 DATE : 9/ 9/88

FIELD : KOELLING
 JOB # : 14538
 DEPTH : 2755
 TEST :

DATA No.	REAL TIME HR:MN:SS	ELAPSE TIME DELTA HOURS	PRESSURE PSIG	TEMP DEG F	DELTA P Pi-P(i-1)
INITIAL FLOW PERIOD					
2	7:15: 0	0.000	38.000	103.00	0.000
3	7:19:59	0.083	38.000	103.00	0.000
4	7:25: 0	0.167	38.000	103.00	0.000
5	7:30: 0	0.250	38.000	103.00	0.000
6	7:34:59	0.333	38.000	103.00	0.000
7	7:40: 0	0.417	38.000	103.00	0.000
8	7:45: 0	0.500	38.000	103.00	0.000
INITIAL SHUT IN					
9	7:48: 0	0.550	38.000	103.00	0.000
10	7:51: 0	0.600	39.000	103.00	1.000
11	7:54: 0	0.650	43.000	103.00	4.000
12	7:57: 0	0.700	51.000	103.00	8.000
13	8: 0: 0	0.750	60.000	103.00	9.000
14	8: 3: 0	0.800	76.000	103.00	16.000
15	8: 6: 0	0.850	89.000	103.00	13.000
16	8: 9: 0	0.900	109.000	103.00	20.000
17	8:12: 0	0.950	148.000	103.00	39.000
18	8:15: 0	1.000	198.000	103.00	50.000
19	8:18: 0	1.050	273.000	103.00	75.000
20	8:21: 0	1.100	355.000	103.00	82.000
FINAL FLOW PERIOD					
21	8:22: 0	1.117	44.000	103.00	-311.000
22	8:25:59	1.183	44.000	103.00	0.000
23	8:31: 0	1.267	44.000	103.00	0.000
24	8:36: 0	1.350	44.000	103.00	0.000
25	8:40:59	1.433	44.000	103.00	0.000
26	8:46: 0	1.517	44.000	103.00	0.000
FINAL SHUT IN					
27	8:51: 0	1.600	44.000	103.00	0.000
28	8:54: 0	1.650	45.000	103.00	1.000
29	8:57: 0	1.700	47.000	103.00	2.000
30	9: 0: 0	1.750	50.000	103.00	3.000
31	9: 3: 0	1.800	53.000	103.00	3.000
32	9: 6: 0	1.850	56.000	103.00	3.000
33	9: 9: 0	1.900	60.000	103.00	4.000
34	9:12: 0	1.950	66.000	103.00	6.000
35	9:15: 0	2.000	71.000	103.00	5.000
36	9:18: 0	2.050	76.000	103.00	5.000
37	9:21: 0	2.100	80.000	103.00	4.000

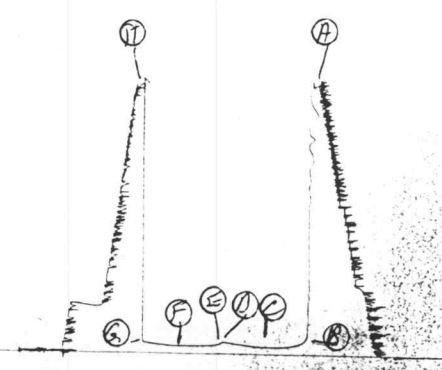
WESTERN TESTING CO. INC.

66

KT 14529

Bever
PST 2

I

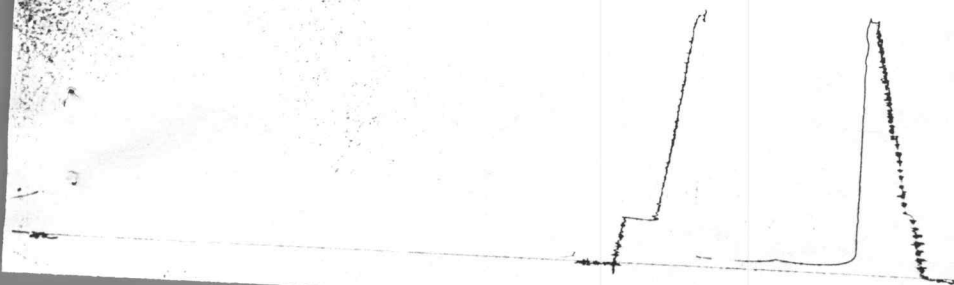


13629

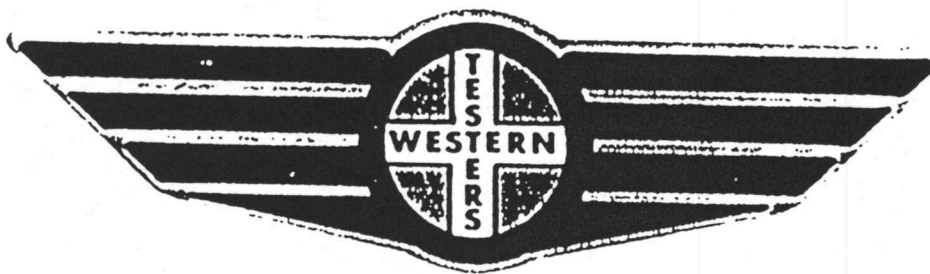
TKT 14539

Bevent
DST 2

0



FORMATION TEST REPORT



Home Office:

Wichita, Kansas 67201

P.O. Box 1599

Phone (316) 262-5861

COMPANY BEREN CORPORATION

LEASE & WELL NO. KOELLING #4

SEC. 22

TWP. 10S RGE. 15W TEST NO. 2

DATE 9/10/88

WESTERN TESTING CO. INC.
SUBSURFACE PRESSURE SURVEY

DATE : 9-10-88
CUSTOMER : BEREN CORPORATION
WELL : #4 TEST: 2
ELEVATION : 1826 KB
SECTION : 22
RANGE : 15W COUNTY : OSBORNE
GAUGE SN# : 1566 RANGE : 4300
TICKET : 14539
LEASE : KOELLING
GEOLOGIST : P S HOUSTON
FORMATION : LANSING
TOWNSHIP : 10S
STATE : KANSAS
CLOCK : 12

INTERVAL FROM : 2933 TO : 3010 TOTAL DEPTH : 3010
DEPTH OF SELECTIVE ZONE :
PACKER DEPTH : 2928 SIZE : 6.75
PACKER DEPTH : 2933 SIZE : 6.75
PACKER DEPTH : SIZE :
PACKER DEPTH : SIZE :

DRILLING CON. : STRATA RIG 3
MUD TYPE : CHEMICAL VISCOSITY : 42
WEIGHT : 9.3 WATER LOSS (CC) : 12
CHLORIDES (PPM) : 8000
JARS-MAKE : - SERIAL NUMBER :
DID WELL FLOW ? : NO REVERSED OUT ? : NO

DRILL COLLAR LENGTH : 0 FT I.D. inch : 0.00
WEIGHT PIPE LENGTH : 805 FT I.D. inch : 2.70
DRILL PIPE LENGTH : 2106 FT I.D. inch : 3.80
TEST TOOL LENGTH : 22 FT TOOL SIZE : 5.50
ANCHOR LENGTH : 77 FT ANCHOR SIZE : 5.50
SURFACE CHOKE SIZE : .75 IN BOTTOM CHOKE SIZE : .75
MAIN HOLE SIZE : 7.875 IN TOOL JOINT SIZE : 4.5 XH

BLOW COMMENT #1 : INITIAL FLOW-WEAK BLOW-DEAD IN 5 MINUTES.
BLOW COMMENT #2 : FINAL FLOW-WEAK BLOW DEAD IN 10 MINUTES.
BLOW COMMENT #3 :
BLOW COMMENT #4 :

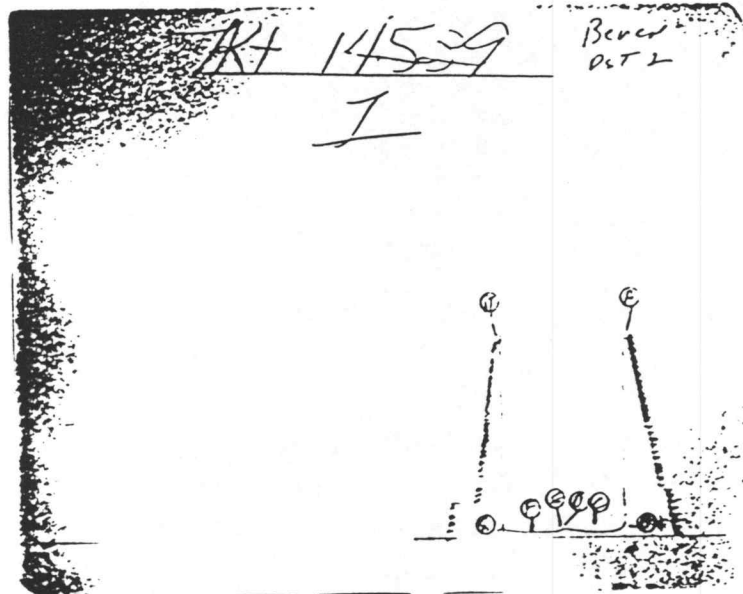
RECOVERED : 10 FT OF: DRILLING MUD / WITH SHOW OF OIL IN TOOL

Total Barrels Fluid = 0.07
Total Fluid Prod Rate = 1.70 BFPD
Indicated Wtr Rate = 0.17 BWPD

REMARK 1 :
REMARK 2 :
REMARK 3 :
REMARK 4 :

SET PACKER(S) : 3:15 PM TIME STARTED OFF BOTTOM : 5:15 PM

WELL TEMPERATURE : 105
INITIAL HYDROSTATIC PRESSURE (A) 1517
INITIAL FLOW PERIOD MIN: 30 (B) 48 PSI TO (C) : 48
INITIAL CLOSED IN PERIOD MIN: 33 (D) 72
FINAL FLOW PERIOD MIN: 30 (E) 50 PSI TO (F) : 50
FINAL CLOSED IN PERIOD MIN: 30 (G) 66
FINAL HYDROSTATIC PRESSURE (H) 1515



COMPANY : BEREN CORPORATION
 WELL : #4
 GAUGE # : 1566
 DATE : 10/ 9/88

FIELD : KOELLING
 JOB # : 14539
 DEPTH : 3010
 TEST :

DATA No.	REAL TIME HR:MN:SS	ELAPSE TIME DELTA HOURS	PRESSURE PSIG	TEMP DEG F	DELTA P Pi-P(i-1)
INITIAL FLOW					
2	3:15: 0	0.000	48.000	106.00	0.000
3	3:19:59	0.083	48.000	106.00	0.000
4	3:25: 0	0.167		106.00	0.000
5	3:30: 0	0.250	48.000	106.00	0.000
6	3:34:59	0.333	48.000	106.00	0.000
7	3:40: 0	0.417	48.000	106.00	0.000
8	3:45: 0	0.500	48.000	106.00	0.000
INITIAL SHUT-IN					
9	3:48: 0	0.550	48.000	106.00	0.000
10	3:51: 0	0.600	49.000	106.00	1.000
11	3:54: 0	0.650	50.000	106.00	1.000
12	3:57: 0	0.700	51.000	106.00	1.000
13	4: 0: 0	0.750	55.000	106.00	4.000
14	4: 3: 0	0.800	58.000	106.00	3.000
15	4: 6: 0	0.850	60.000	106.00	2.000
16	4: 9: 0	0.900	63.000	106.00	3.000
17	4:12: 0	0.950	66.000	106.00	3.000
18	4:15: 0	1.000	69.000	106.00	3.000
19	4:18: 0	1.050	72.000	106.00	3.000
FINAL FLOW					
20	4:19: 0	1.067	50.000	106.00	-22.000
21	4:22:59	1.133	50.000	106.00	0.000
22	4:28: 0	1.217	50.000	106.00	0.000
23	4:33: 0	1.300	50.000	106.00	0.000
24	4:37:59	1.383	50.000	106.00	0.000
25	4:43: 0	1.467	50.000	106.00	0.000
26	4:48: 0	1.550	50.000	106.00	0.000
FINAL SHUT-IN					
27	4:50:59	1.600	50.000	106.00	0.000
28	4:54: 0	1.650	50.000	106.00	0.000
29	4:56:59	1.700	51.000	106.00	1.000
30	5: 0: 0	1.750	53.000	106.00	2.000
31	5: 3: 0	1.800	55.000	106.00	2.000
32	5: 5:59	1.850	57.000	106.00	2.000
33	5: 9: 0	1.900	59.000	106.00	2.000
34	5:12: 0	1.950	61.000	106.00	2.000
35	5:15: 0	2.000	63.000	106.00	2.000
36	5:18: 0	2.050	66.000	106.00	3.000

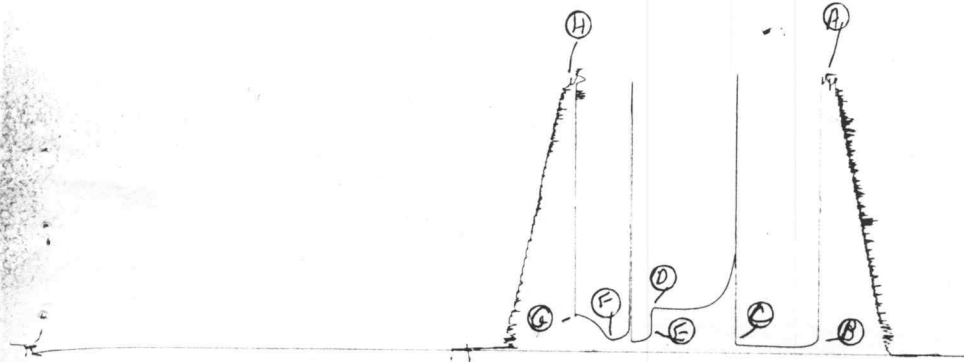
WESTERN TESTING CO. INC.

1566

PK 14540

Beam
DST 3

I

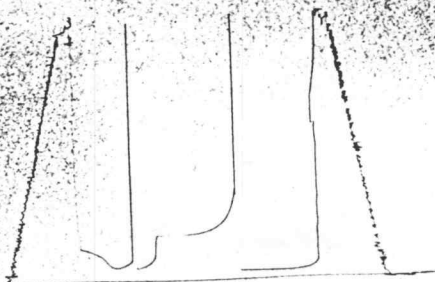


13629

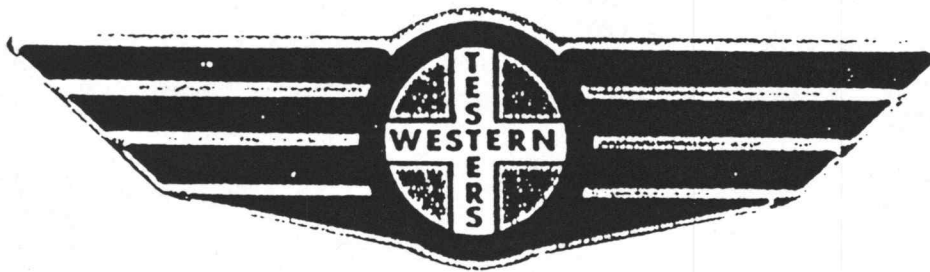
RT 14540

Bever
DST 3

0



FORMATION TEST REPORT



Home Office:

Wichita, Kansas 67201

P.O. Box 1599

Phone (316) 262-5861

COMPANY BEREN CORPORATION LEASE & WELL NO. KOELLING #4 SEC. 22 TWP. 10S RGE. 15W TEST NO. 3 DATE 9/11/88

WESTERN TESTING CO. INC.
SUBSURFACE PRESSURE SURVEY

DATE : 9-11-88
CUSTOMER : BEREN CORPORATION
WELL : #4 TEST: 3
ELEVATION : 1826 KB
SECTION : 22
RANGE : 15W COUNTY : OSBORNE
GAUGE SN# : 1566 RANGE : 4300
TICKET : 14540
LEASE : KOELLING
GEOLOGIST : P S HOUSTON
FORMATION : LANSING
TOWNSHIP : 10S
STATE : KANSAS
CLOCK : 12

INTERVAL FROM : 3007 TO : 3028 TOTAL DEPTH : 3028
DEPTH OF SELECTIVE ZONE :
PACKER DEPTH : 3002 SIZE : 6.75
PACKER DEPTH : 3007 SIZE : 6.75
PACKER DEPTH : SIZE :
PACKER DEPTH : SIZE :

DRILLING CON. : STRATA RIG 3
MUD TYPE : CHEMICAL VISCOSITY : 42
WEIGHT : 9.3 WATER LOSS (CC) : 12
CHLORIDES (PPM) : 8000
JARS-MAKE : - SERIAL NUMBER :
DID WELL FLOW ? : NO REVERSED OUT ? : NO

DRILL COLLAR LENGTH : 0 FT I.D. inch : 0.00
WEIGHT PIPE LENGTH : 837 FT I.D. inch : 2.70
DRILL PIPE LENGTH : 2148 FT I.D. inch : 3.80
TEST TOOL LENGTH : 22 FT TOOL SIZE : 5.50
ANCHOR LENGTH : 21 FT ANCHOR SIZE : 5.50
SURFACE CHOKE SIZE : .75 IN BOTTOM CHOKE SIZE : .75
MAIN HOLE SIZE : 7.875 IN TOOL JOINT SIZE : 4.5 XH

BLOW COMMENT #1 : INITIAL FLOW-WEAK BLOW BUILDING TO FAIR-5" IN BUCKET
BLOW COMMENT #2 : FINAL FLOW-NO BLOW.
BLOW COMMENT #3 :
BLOW COMMENT #4 :

RECOVERED : 30 FT OF: DRILLING MUD / WITH SCUM OF OIL

Total Barrels Fluid = 0.21
Total Fluid Prod Rate = 3.40 BFPD
Indicated Wtr Rate = 0.34 BWPD

REMARK 1 :
REMARK 2 :
REMARK 3 :
REMARK 4 :

SET PACKER(S) : 1:30 AM

TIME STARTED OFF BOTTOM : 4:30 AM

WELL TEMPERATURE : 106

INITIAL HYDROSTATIC PRESSURE

(A) 1579

INITIAL FLOW PERIOD MIN: 60

(B) 47 PSI TO (C) : 52

INITIAL CLOSED IN PERIOD MIN: 60

(D) 257

FINAL FLOW PERIOD MIN: 30

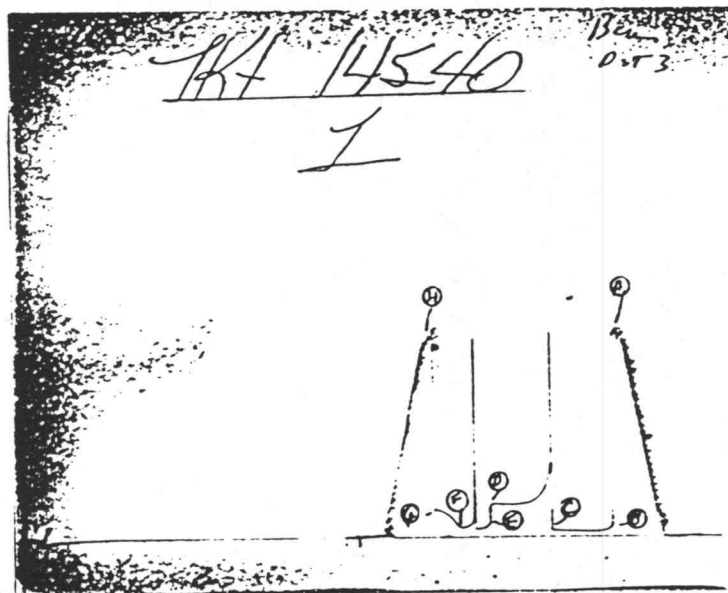
(E) 105 PSI TO (F) : 75

FINAL CLOSED IN PERIOD MIN: 27

(G) 216

FINAL HYDROSTATIC PRESSURE

(H) 1554



COMPANY : BEREN CORPORATION
 WELL : #4
 GAUGE # : 1566
 DATE : 11/ 9/88

FIELD : KOELLING
 JOB # : 14540
 DEPTH : 3028
 TEST :

DATA No.	REAL TIME HR:MN:SS	ELAPSE TIME DELTA HOURS	PRESSURE PSIG	TEMP DEG F	DELTA P Pi-P(i-1)
INITIAL FLOW					
2	1:30: 0	0.000	47.000	106.00	0.000
3	1:34:59	0.083	47.000	106.00	0.000
4	1:40: 0	0.167	47.000	106.00	0.000
5	1:45: 0	0.250	47.000	106.00	0.000
6	1:49:59	0.333	47.000	106.00	0.000
7	1:55: 0	0.417	47.000	106.00	0.000
8	2: 0: 0	0.500	47.000	106.00	0.000
9	2: 4:59	0.583	47.000	106.00	0.000
10	2:10: 0	0.667	48.000	106.00	1.000
11	2:15: 0	0.750	49.000	106.00	1.000
12	2:19:59	0.833	50.000	106.00	1.000
13	2:25: 0	0.917	51.000	106.00	1.000
14	2:30: 0	1.000	52.000	106.00	1.000
INITIAL SHUT-IN * PICKED UP TOOL TOO HIGH * QUESTIONABLE					
15	2:33: 0	1.050	558.000	106.00	506.000
16	2:36: 0	1.100	427.000	106.00	-131.000
17	2:39: 0	1.150	370.000	106.00	-57.000
18	2:42: 0	1.200	363.000	106.00	-7.000
19	2:45: 0	1.250	307.000	106.00	-56.000
20	2:48: 0	1.300	287.000	106.00	-20.000
21	2:51: 0	1.350	268.000	106.00	-19.000
22	2:54: 0	1.400	261.000	106.00	-7.000
23	2:57: 0	1.450	258.000	106.00	-3.000
24	3: 0: 0	1.500	256.000	106.00	-2.000
25	3: 3: 0	1.550	254.000	106.00	-2.000
26	3: 6: 0	1.600	254.000	106.00	0.000
27	3: 9: 0	1.650	254.000	106.00	0.000
28	3:12: 0	1.700	254.000	106.00	0.000
29	3:15: 0	1.750	254.000	106.00	0.000
30	3:18: 0	1.800	254.000	106.00	0.000
31	3:21: 0	1.850	255.000	106.00	1.000
32	3:24: 0	1.900	255.000	106.00	0.000
33	3:27: 0	1.950	256.000	106.00	1.000
34	3:30: 0	2.000	257.000	106.00	1.000
FINAL FLOW * FLUSHED TOOL					
35	3:31: 0	2.017	105.000	106.00	-152.000
36	3:34:59	2.083	76.000	106.00	-29.000
37	3:40: 0	2.167	66.000	106.00	-10.000
38	3:45: 0	2.250	188.000	106.00	122.000
39	3:49:59	2.333	94.000	106.00	-94.000
40	3:55: 0	2.417	78.000	106.00	-16.000
41	4: 0: 0	2.500	75.000	106.00	-3.000
42	4: 3: 0	2.550	94.000	106.00	19.000
43	4: 6: 0	2.600	130.000	106.00	36.000
44	4: 9: 0	2.650	157.000	106.00	27.000
45	4:12: 0	2.700	174.000	106.00	17.000
46	4:15: 0	2.750	188.000	106.00	14.000
47	4:18: 0	2.800	200.000	106.00	12.000
48	4:21: 0	2.850	206.000	106.00	6.000
49	4:24: 0	2.900	212.000	106.00	6.000

COMPANY : BEREN CORPORATION
WELL : #4
GAUGE # : 1566
DATE : 11/ 9/88

FIELD : KOELLING
JOB # : 14540
DEPTH : 3028
TEST :

DATA No.	REAL TIME HR:MN:SS	ELAPSE TIME DELTA HOURS	PRESSURE PSIG	TEMP DEG F	DELTA P Pi-P(i-1)
50	4:27: 0	2.950	216.000	106.00	4.000

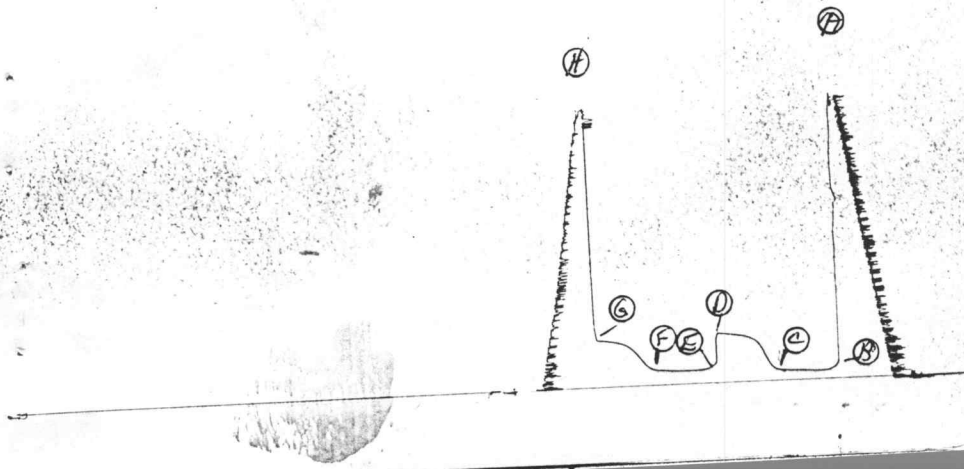
WESTERN TESTING CO. INC.

1566

TRT 14541

Beren
DST4

I



13629

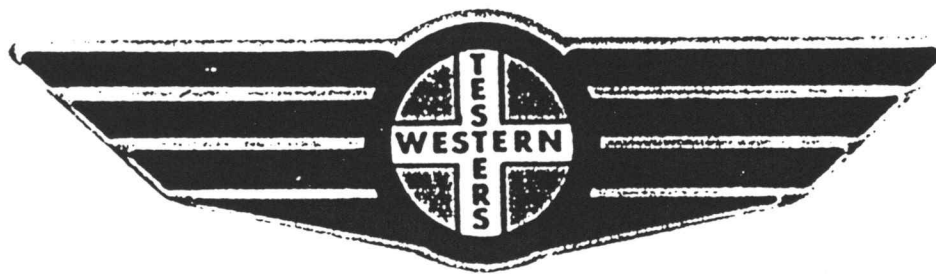
~~KA~~ K541

0

Berem
OST 4



FORMATION TEST REPORT



Home Office:

Wichita, Kansas 67201

P.O. Box 1599

Phone (316) 262-5861

COMPANY BEREN CORPORATION LEASE & WELL NO. KOELLING #4 SEC. 22 TWP. 10S RGE. 15W TEST NO. 4 DATE 9/11/88

WESTERN TESTING CO. INC.
SUBSURFACE PRESSURE SURVEY

DATE : 9-11-88 TICKET : 14541
CUSTOMER : BEREN CORPORATION LEASE : KOELLING
WELL : #4 TEST: 4 GEOLOGIST : P S HOUSTON
ELEVATION : 1826 KB FORMATION : LANSING
SECTION : 22 TOWNSHIP : 10S
RANGE : 15W COUNTY : OSBORNE STATE : KANSAS
GAUGE SN# : 1566 RANGE : 4300 CLOCK : 12

INTERVAL FROM : 3031 TO : 3075 TOTAL DEPTH : 3075
DEPTH OF SELECTIVE ZONE :
PACKER DEPTH : 3026 SIZE : 6.75
PACKER DEPTH : 3031 SIZE : 6.75
PACKER DEPTH : SIZE :
PACKER DEPTH : SIZE :

DRILLING CON. : STRATA RIG 3
MUD TYPE : CHEMICAL VISCOSITY : 44
WEIGHT : 9.5 WATER LOSS (CC) : 13
CHLORIDES (PPM) : 8000
JARS-MAKE : - SERIAL NUMBER :
DID WELL FLOW ? : NO REVERSED OUT ? : NO

DRILL COLLAR LENGTH : 0 FT I.D. inch : 0.00
WEIGHT PIPE LENGTH : 837 FT I.D. inch : 2.70
DRILL PIPE LENGTH : 2172 FT I.D. inch : 3.80
TEST TOOL LENGTH : 22 FT TOOL SIZE : 5.50
ANCHOR LENGTH : 44 FT ANCHOR SIZE : 5.50
SURFACE CHOKE SIZE : .75 IN BOTTOM CHOKE SIZE : .75
MAIN HOLE SIZE : 7.875 IN TOOL JOINT SIZE : 4.5 XH

BLOW COMMENT #1 : INITIAL FLOW-STRONG BLOW-12" IN BUCKET.
BLOW COMMENT #2 : FINAL FLOW-STRONG BLOW-8" IN BUCKET.
BLOW COMMENT #3 :
BLOW COMMENT #4 :

COMPANY : BEREN CORPORATION
 WELL : #4
 GAUGE # : 1566
 DATE : 11/ 9/88

FIELD : KOELLING
 JOB # : 14541
 DEPTH : 3075
 TEST :

DATA No.	REAL TIME HR:MN:SS	ELAPSE TIME DELTA HOURS	PRESSURE PSIG	TEMP DEG F	DELTA P Pi-P(i-1)
INITIAL FLOW					
2	1:45: 0	0.000	62.000	107.00	0.000
3	1:49:59	0.083	62.000	107.00	0.000
4	1:55: 0	0.167	62.000	107.00	0.000
5	2: 0: 0	0.250	62.000	107.00	0.000
6	2: 4:59	0.333	63.000	107.00	1.000
7	2:10: 0	0.417	66.000	107.00	3.000
8	2:15: 0	0.500	68.000	107.00	2.000
9	2:19:59	0.583	69.000	107.00	1.000
10	2:25: 0	0.667	71.000	107.00	2.000
11	2:30: 0	0.750	72.000	107.00	1.000
INITIAL SHUT-IN					
12	2:33: 0	0.800	82.000	107.00	10.000
13	2:36: 0	0.850	102.000	107.00	20.000
14	2:39: 0	0.900	138.000	107.00	36.000
15	2:42: 0	0.950	190.000	107.00	52.000
16	2:45: 0	1.000	229.000	107.00	39.000
17	2:48: 0	1.050	248.000	107.00	19.000
18	2:51: 0	1.100	261.000	107.00	13.000
19	2:54: 0	1.150	271.000	107.00	10.000
20	2:57: 0	1.200	275.000	107.00	4.000
21	3: 0: 0	1.250	280.000	107.00	5.000
22	3: 3: 0	1.300	283.000	107.00	3.000
23	3: 6: 0	1.350	287.000	107.00	4.000
24	3: 9: 0	1.400	291.000	107.00	4.000
25	3:12: 0	1.450	292.000	107.00	1.000
26	3:15: 0	1.500	293.000	107.00	1.000
FINAL FLOW					
27	3:16: 0	1.517	95.000	107.00	-198.000
28	3:19:59	1.583	95.000	107.00	0.000
29	3:25: 0	1.667	95.000	107.00	0.000
30	3:30: 0	1.750	95.000	107.00	0.000
31	3:34:59	1.833	95.000	107.00	0.000
32	3:40: 0	1.917	95.000	107.00	0.000
33	3:45: 0	2.000	95.000	107.00	0.000
34	3:49:59	2.083	97.000	107.00	2.000
35	3:55: 0	2.167	99.000	107.00	2.000
36	4: 0: 0	2.250	101.000	107.00	2.000
FINAL SHUT-IN					
37	4: 3: 0	2.300	111.000	107.00	10.000
38	4: 6: 0	2.350	126.000	107.00	15.000
39	4: 9: 0	2.400	151.000	107.00	25.000
40	4:12: 0	2.450	181.000	107.00	30.000
41	4:15: 0	2.500	213.000	107.00	32.000
42	4:18: 0	2.550	233.000	107.00	20.000
43	4:21: 0	2.600	247.000	107.00	14.000
44	4:24: 0	2.650	257.000	107.00	10.000
45	4:27: 0	2.700	265.000	107.00	8.000
46	4:30: 0	2.750	270.000	107.00	5.000
47	4:33: 0	2.800	274.000	107.00	4.000
48	4:36: 0	2.850	275.000	107.00	1.000

COMPANY : BEREN CORPORATION
WELL : #4
GAUGE # : 1566
DATE : 11/ 9/88

FIELD : KOELLING
JOB # : 14541
DEPTH : 3075
TEST :

DATA No.	REAL TIME HR:MN:SS	ELAPSE TIME DELTA HOURS	PRESSURE PSIG	TEMP DEG F	DELTA P Pi-P(i-1)
49	4:39: 0	2.900	279.000	107.00	4.000
50	4:42: 0	2.950	281.000	107.00	2.000

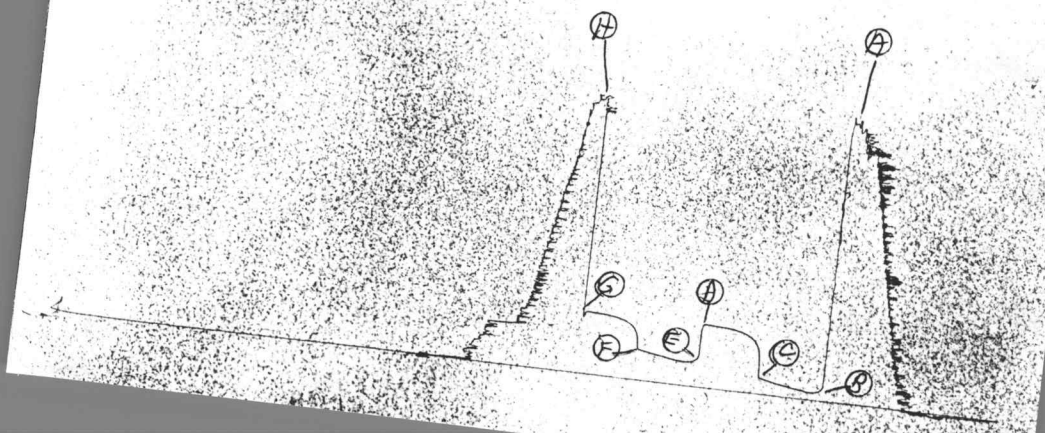
WESTERN TESTING CO. INC.

1-5-66

KT 1454

Bered
DST 5

I

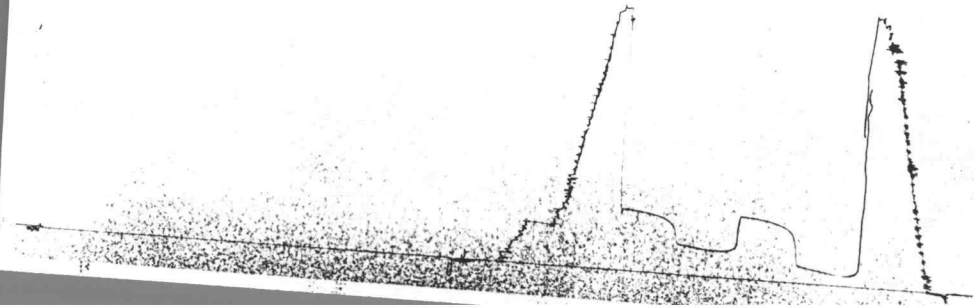


13629

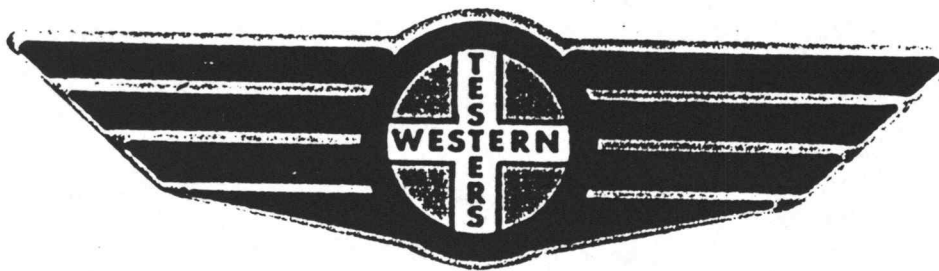
KT 1454

Bercom
PST 5.

0



FORMATION TEST REPORT



Home Office:

Wichita, Kansas 67201

P.O. Box 1599

Phone (316) 262-5861

WESTERN TESTING CO. INC.
SUBSURFACE PRESSURE SURVEY

DATE : 9-12-88
CUSTOMER : BEREN CORPORATION
WELL : #4 TEST: 5
ELEVATION : 1826 KB
SECTION : 22
RANGE : 15W COUNTY : OSBORNE
GAUGE SN# : 1566 RANGE : 4300
TICKET : 14542
LEASE : KOELLING
GEOLOGIST : P S HOUSTON
FORMATION : LANSING
TOWNSHIP : 10S
STATE : KANSAS
CLOCK : 12

INTERVAL FROM : 3078 TO : 3093 TOTAL DEPTH : 3093
DEPTH OF SELECTIVE ZONE :
PACKER DEPTH : 3073 SIZE : 6.75
PACKER DEPTH : 3078 SIZE : 6.75
PACKER DEPTH : SIZE :
PACKER DEPTH : SIZE :

DRILLING CON. : STRATA RIG 3
MUD TYPE : CHEMICAL VISCOSITY : 44
WEIGHT : 9.5 WATER LOSS (CC) : 13
CHLORIDES (PPM) : 8000
JARS-MAKE : NO SERIAL NUMBER :
DID WELL FLOW ? : NO REVERSED OUT ? : NO

DRILL COLLAR LENGTH : 0 FT I.D. inch : 0.00
WEIGHT PIPE LENGTH : 837 FT I.D. inch : 2.70
DRILL PIPE LENGTH : 2219 FT I.D. inch : 3.80
TEST TOOL LENGTH : 22 FT TOOL SIZE : 5.50
ANCHOR LENGTH : 15 FT ANCHOR SIZE : 5.50
SURFACE CHOKE SIZE : .75 IN BOTTOM CHOKE SIZE : .75
MAIN HOLE SIZE : 7.875 IN TOOL JOINT SIZE : 4.5 XH

BLOW COMMENT #1 : INITIAL FLOW-STRONG BLOW-BOTTOM OF BUCKET IN 20 MINUTES
BLOW COMMENT #2 : FINAL FLOW-STRONG BLOW-8" IN BUCKET.
BLOW COMMENT #3 :
BLOW COMMENT #4 :

RECOVERED : 310 FT OF: MUDDY WATER / WITH FEW OIL SPOTS

CHLORIDES: 57000 PPM

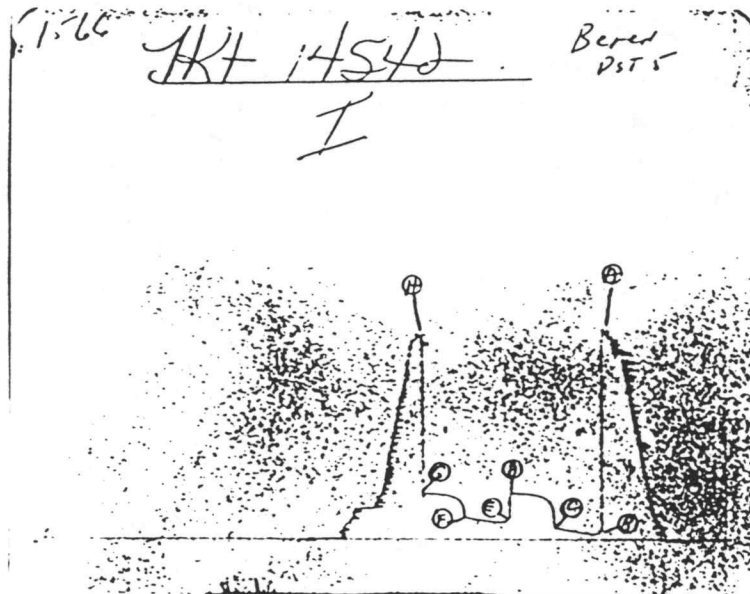
RESISTIVITY .08
Total Barrels Fluid = 2.20
Total Fluid Prod Rate = 33.27 BFPD
Indicated Wtr Rate = 16.10 BWPD

REMARK 1 :
REMARK 2 :
REMARK 3 :
REMARK 4 :

SET PACKER(S) : 12:25 AM
WELL TEMPERATURE : 107

TIME STARTED OFF BOTTOM : 3:25 AM

INITIAL HYDROSTATIC PRESSURE	(A)	1612	
INITIAL FLOW PERIOD MIN: 50	(B)	58	PSI TO (C) : 105
INITIAL CLOSED IN PERIOD MIN: 45	(D)	370	
FINAL FLOW PERIOD MIN: 45	(E)	147	PSI TO (F) : 180
FINAL CLOSED IN PERIOD MIN: 45	(G)	364	
FINAL HYDROSTATIC PRESSURE	(H)	1584	



COMPANY : BEREN CORPORATION

WELL : #4

GAUGE # : 1566

DATE : 12/ 9/88

FIELD : KOELLING

JOB # : 14542

DEPTH : 3093

TEST :

DATA No.	REAL TIME HR:MN:SS	ELAPSE TIME DELTA HOURS	PRESSURE PSIG	TEMP DEG F	DELTA P Pi-P(i-1)
INITIAL FLOW					
2	12:25: 0	0.000	58.000	107.00	0.000
3	12:29:59	0.083	58.000	107.00	0.000
4	12:35: 0	0.167	58.000	107.00	0.000
5	12:40: 0	0.250	59.000	107.00	0.000
6	12:44:59	0.333	65.000	107.00	1.000
7	12:50: 0	0.417	71.000	107.00	6.000
8	12:55: 0	0.500	79.000	107.00	6.000
9	12:59:59	0.583	84.000	107.00	8.000
10	13: 5: 0	0.667	93.000	107.00	5.000
11	13:10: 0	0.750	102.000	107.00	9.000
12	13:14:59	0.833	105.000	107.00	9.000
INITIAL SHUT-IN					
13	13:17:59	0.883	258.000	107.00	153.000
14	13:20:59	0.933	300.000	107.00	42.000
15	13:23:59	0.983	322.000	107.00	22.000
16	13:26:59	1.033	335.000	107.00	13.000
17	13:29:59	1.083	344.000	107.00	9.000
18	13:32:59	1.133	350.000	107.00	6.000
19	13:35:59	1.183	356.000	107.00	6.000
20	13:38:59	1.233	360.000	107.00	4.000
21	13:41:59	1.283	362.000	107.00	2.000
22	13:44:59	1.333	364.000	107.00	2.000
23	13:47:59	1.383	366.000	107.00	2.000
24	13:50:59	1.433	367.000	107.00	1.000
25	13:53:59	1.483	368.000	107.00	1.000
26	13:56:59	1.533	369.000	107.00	1.000
27	13:59:59	1.583	370.000	107.00	1.000
FINAL FLOW					
28	14: 1: 0	1.600	147.000	107.00	-223.000
29	14: 4:59	1.667	147.000	107.00	0.000
30	14:10: 0	1.750	147.000	107.00	0.000
31	14:14:59	1.833	147.000	107.00	0.000
32	14:19:59	1.917	151.000	107.00	4.000
33	14:25: 0	2.000	160.000	107.00	9.000
34	14:29:59	2.083	165.000	107.00	5.000
35	14:34:59	2.167	171.000	107.00	6.000
36	14:40: 0	2.250	177.000	107.00	6.000
37	14:44:59	2.333	180.000	107.00	3.000
FINAL SHUT-IN					
38	14:47:59	2.383	287.000	107.00	107.000
39	14:50:59	2.433	316.000	107.00	29.000
40	14:53:59	2.483	331.000	107.00	15.000
41	14:56:59	2.533	339.000	107.00	8.000
42	14:59:59	2.583	347.000	107.00	8.000
43	15: 2:59	2.633	354.000	107.00	7.000
44	15: 5:59	2.683	357.000	107.00	3.000
45	15: 8:59	2.733	360.000	107.00	3.000
46	15:11:59	2.783	362.000	107.00	2.000
47	15:14:59	2.833	363.000	107.00	1.000
48	15:17:59	2.883	364.000	107.00	1.000

COMPANY : BEREN CORPORATION
WELL : #4
GAUGE # : 1566
DATE : 12/ 9/88

FIELD : KOELLING
JOB # : 14542
DEPTH : 3093
TEST :

DATA No.	REAL TIME HR:MN:SS	ELAPSE TIME DELTA HOURS	PRESSURE PSIG	TEMP DEG F	DELTA P Pi-P(i-1)
49	15:20:59	2.933	364.000	107.00	0.000
50	15:23:59	2.983	364.000	107.00	0.000
51	15:26:59	3.033	364.000	107.00	0.000
52	15:29:59	3.083	364.000	107.00	0.000

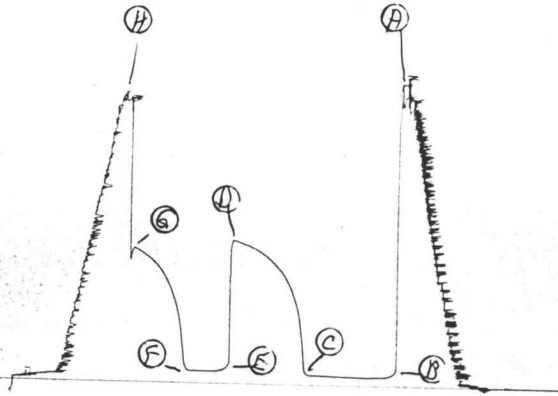
WESTERN TESTING CO. INC.

1566

KT 14543

Berend
DST 6

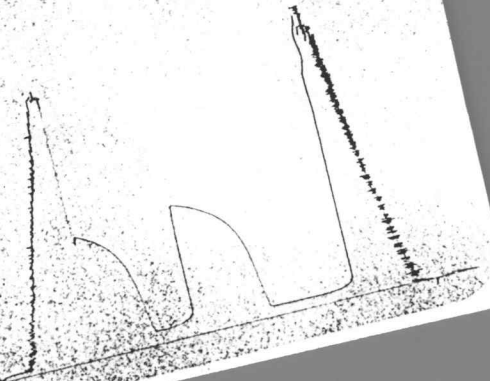
1



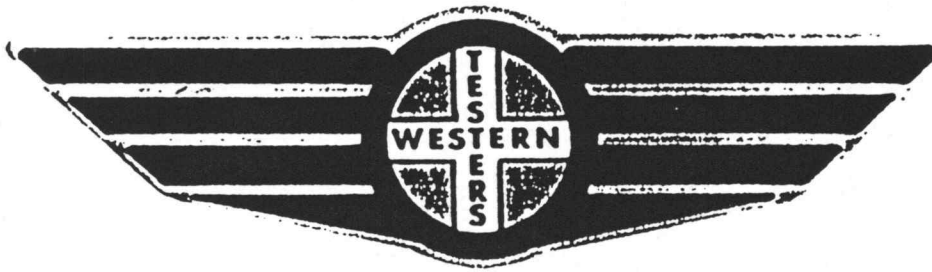
13629

PK4 14543

0



FORMATION TEST REPORT



Home Office:

Wichita, Kansas 67201

P.O. Box 1599

Phone (316) 262-5861

COMPANY

BEREN CORPORATION

LEASE & WELL NO.

KOELLING #4

SEC. 22

TWP. 10S

RGE. 15W

TEST NO.

6

DATE

9/12/88

WESTERN TESTING CO. INC.
SUBSURFACE PRESSURE SURVEY

DATE : 9/12/88 TICKET : 14543
CUSTOMER : BEREN CORPORATION LEASE : KOELLING
WELL : 4 TEST: 6 GEOLOGIST : HOUSTON
ELEVATION : 1826 KB FORMATION : LANSING
SECTION : 22 TOWNSHIP : 10S
RANGE : 15W COUNTY : OSBORNE STATE : KANSAS
GAUGE SN# : 1566 RANGE : 4300 CLOCK : 12

INTERVAL FROM : 3192 TO : 3263 TOTAL DEPTH : 3263
DEPTH OF SELECTIVE ZONE :
PACKER DEPTH : 3187 SIZE : 6.75
PACKER DEPTH : 3192 SIZE : 6.75
PACKER DEPTH : SIZE :
PACKER DEPTH : SIZE :

DRILLING CON. : STRATA RIG 3
MUD TYPE : CHEMICAL VISCOSITY : 42
WEIGHT : 9.5 WATER LOSS (CC) : 12.
CHLORIDES (PPM) : 9000
JARS-MAKE : SERIAL NUMBER :
DID WELL FLOW ? : NO REVERSED OUT ? : NO

DRILL COLLAR LENGTH : 0 FT I.D. inch : 0.00
WEIGHT PIPE LENGTH : 805 FT I.D. inch : 2.70
DRILL PIPE LENGTH : 2365 FT I.D. inch : 3.80
TEST TOOL LENGTH : 22 FT TOOL SIZE : 5.50
ANCHOR LENGTH : 71 FT ANCHOR SIZE : 5.50
SURFACE CHOKE SIZE : .75 IN BOTTOM CHOKE SIZE : .75
MAIN HOLE SIZE : 7.875 IN TOOL JOINT SIZE : 4.5XH

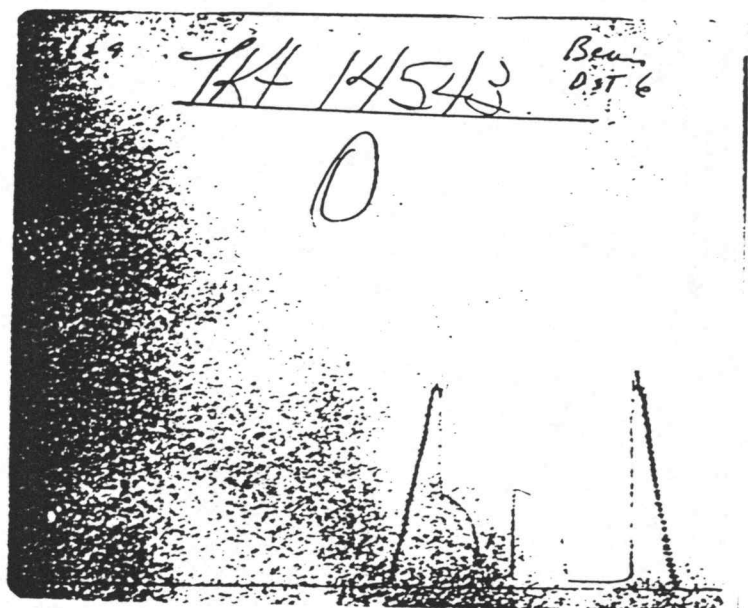
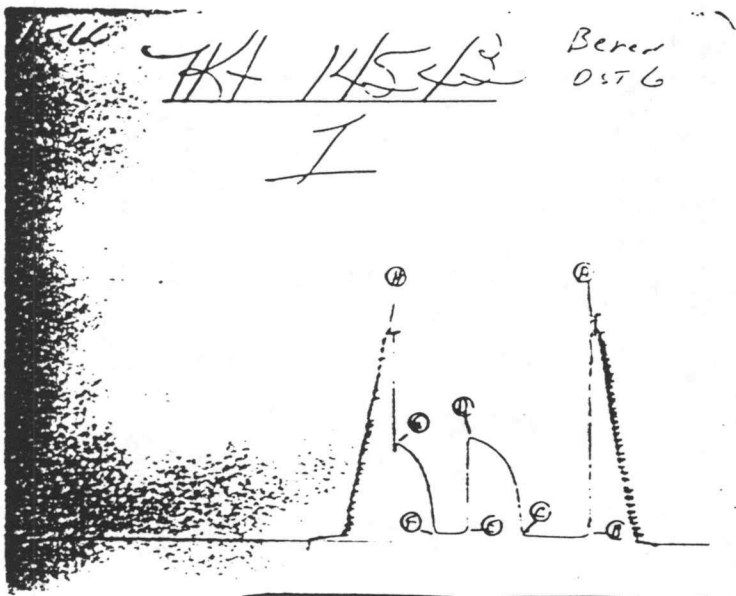
BLOW COMMENT #1 : INITIAL FLOW PERIOD FAIR BLOW-
BLOW COMMENT #2 : 4 INCHES IN BUCKET.
BLOW COMMENT #3 : FINAL FLOW PERIOD NO BLOW.
BLOW COMMENT #4 :

RECOVERED : 50 FT OF: MUDDY WATER
RECOVERED : 0 FT OF: CHLORIDES 24000 PPM

Total Barrels Fluid = 0.35
Total Fluid Prod Rate = 5.37 BFPD
Indicated Wtr Rate = 4.03 BWPD

REMARK 1 :
REMARK 2 :
REMARK 3 :
REMARK 4 :

SET PACKER(S) : 8:35 PM TIME STARTED OFF BOTTOM : 11:50 PM
WELL TEMPERATURE : 108
INITIAL HYDROSTATIC PRESSURE (A) 1704
INITIAL FLOW PERIOD MIN: 65 (B) 54 PSI TO (C) : 63
INITIAL CLOSED IN PERIOD MIN: 57 (D) 813
FINAL FLOW PERIOD MIN: 30 (E) 78 PSI TO (F) : 78
FINAL CLOSED IN PERIOD MIN: 45 (G) 763
FINAL HYDROSTATIC PRESSURE (H) 1651



COMPANY : BEREN CORPORATION
 WELL : 4
 GAUGE # : 1566
 DATE : 12/ 9/88

FIELD : KOELLING
 JOB # : 14543
 DEPTH : 3263
 TEST :

DATA No.	REAL TIME HR:MN:SS	ELAPSE TIME DELTA HOURS	PRESSURE PSIG	TEMP DEG F	DELTA P Pi-P(i-1)
INITIAL FLOW PERIOD					
2	8:35: 0	0.000	54.000	108.00	0.000
3	8:39:59	0.083	54.000	108.00	0.000
4	8:45: 0	0.167	54.000	108.00	0.000
5	8:50: 0	0.250	54.000	108.00	0.000
6	8:54:59	0.333	54.000	108.00	0.000
7	9: 0: 0	0.417	54.000	108.00	0.000
8	9: 5: 0	0.500	54.000	108.00	0.000
9	9: 9:59	0.583	56.000	108.00	2.000
10	9:15: 0	0.667	58.000	108.00	2.000
11	9:20: 0	0.750	59.000	108.00	1.000
12	9:24:59	0.833	60.000	108.00	1.000
13	9:30: 0	0.917	61.000	108.00	1.000
14	9:35: 0	1.000	62.000	108.00	1.000
15	9:39:59	1.083	63.000	108.00	1.000
INITIAL SHUT-IN PERIOD					
16	9:42:59	1.133	129.000	108.00	66.000
17	9:45:59	1.183	316.000	108.00	187.000
18	9:48:59	1.233	433.000	108.00	117.000
19	9:51:59	1.283	506.000	108.00	73.000
20	9:54:59	1.333	563.000	108.00	57.000
21	9:57:59	1.383	605.000	108.00	42.000
22	10: 0:59	1.433	637.000	108.00	32.000
23	10: 3:59	1.483	664.000	108.00	27.000
24	10: 6:59	1.533	685.000	108.00	21.000
25	10: 9:59	1.583	707.000	108.00	22.000
26	10:12:59	1.633	725.000	108.00	18.000
27	10:15:59	1.683	741.000	108.00	16.000
28	10:18:59	1.733	757.000	108.00	16.000
29	10:21:59	1.783	769.000	108.00	12.000
30	10:24:59	1.833	779.000	108.00	10.000
31	10:27:59	1.883	788.000	108.00	9.000
32	10:30:59	1.933	797.000	108.00	9.000
33	10:33:59	1.983	804.000	108.00	7.000
34	10:36:59	2.033	813.000	108.00	9.000
FINAL FLOW PERIOD					
35	10:38: 0	2.050	78.000	108.00	-735.000
36	10:41:59	2.117	78.000	108.00	0.000
37	10:46:59	2.200	78.000	108.00	0.000
38	10:51:59	2.283	78.000	108.00	0.000
39	10:56:59	2.367	78.000	108.00	0.000
40	11: 1:59	2.450	78.000	108.00	0.000
41	11: 6:59	2.533	78.000	108.00	0.000
FINAL SHUT-IN PERIOD					
42	11: 9:59	2.583	250.000	108.00	172.000
43	11:12:59	2.633	309.000	108.00	59.000
44	11:15:59	2.683	424.000	108.00	115.000
45	11:18:59	2.733	492.000	108.00	68.000
46	11:21:59	2.783	551.000	108.00	59.000
47	11:24:59	2.833	596.000	108.00	45.000
48	11:27:59	2.883	633.000	108.00	37.000

COMPANY : BEREN CORPORATION
WELL : 4
GAUGE # : 1566
DATE : 12/ 9/88

FIELD : KOELLING
JOB # : 14543
DEPTH : 3263
TEST :

DATA No.	REAL TIME HR:MN:SS	ELAPSE TIME DELTA HOURS	PRESSURE PSIG	TEMP DEG F	DELTA P Pi-P(i-1)
49	11:30:59	2.933	661.000	108.00	28.000
50	11:33:59	2.983	683.000	108.00	22.000
51	11:36:59	3.033	704.000	108.00	21.000
52	11:39:59	3.083	721.000	108.00	17.000
53	11:42:59	3.133	735.000	108.00	14.000
54	11:45:59	3.183	748.000	108.00	13.000
55	11:48:59	3.233	761.000	108.00	13.000
56	11:51:59	3.283	763.000	108.00	2.000

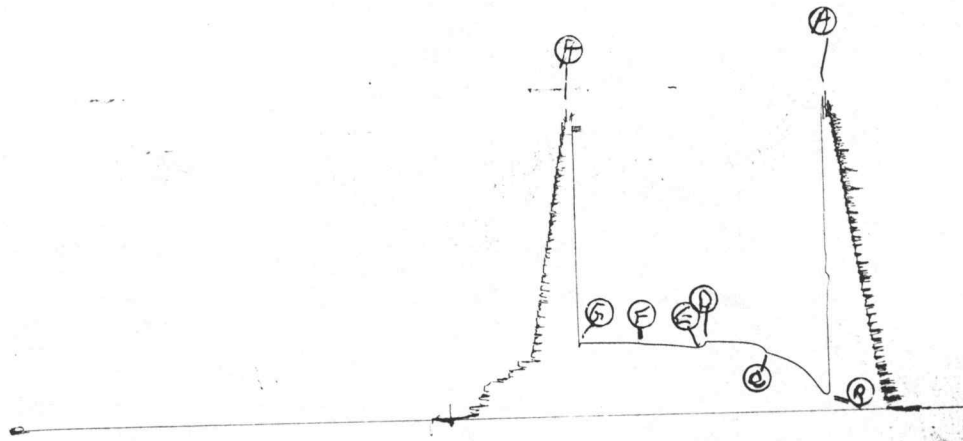
WESTERN TESTING CO. INC.

1566

KT 14544

Beam
D. 7

I



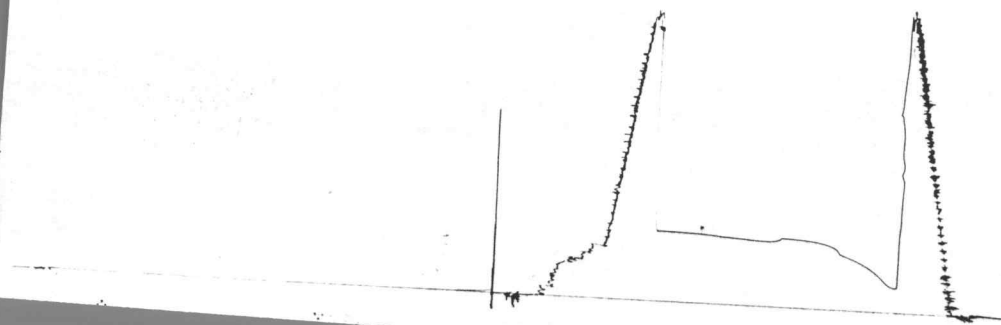
13629

14 4544

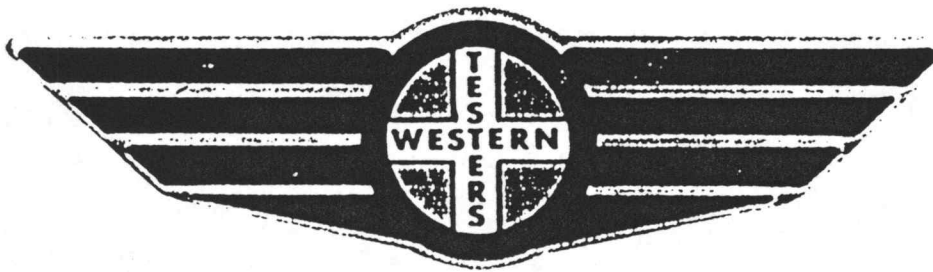
13629

DST 7

0



FORMATION TEST REPORT



Home Office:

Wichita, Kansas 67201

P.O. Box 1599

Phone (316) 262-5861

COMPANY BEREN CORPORATION

LEASE & WELL NO.

KOELLING #4

SEC. 22

TWP. 10S

RGE. 15W

TEST NO. 7

DATE

9/13/88

WESTERN TESTING CO. INC.
SUBSURFACE PRESSURE SURVEY

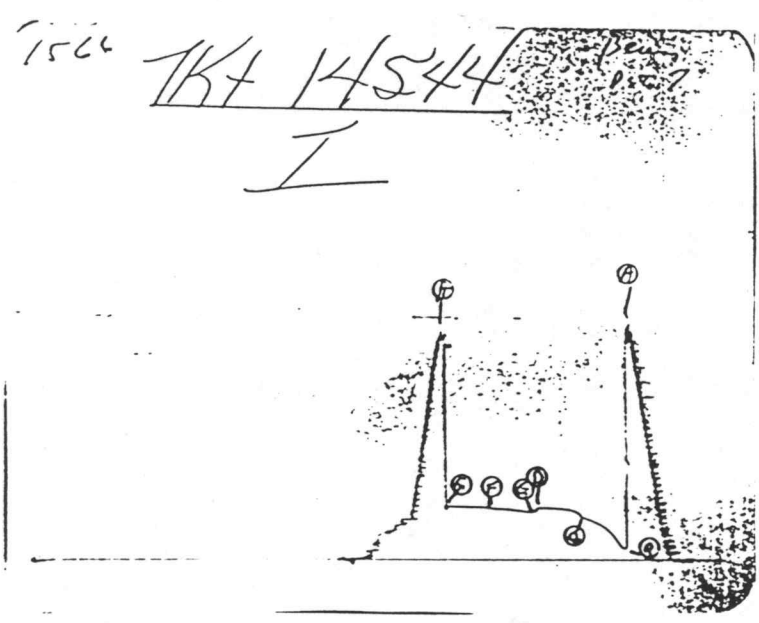
DATE : 9/13/88
 CUSTOMER : BEREN CORPORATION
 WELL : 4 TEST: 7
 ELEVATION : 1826 KB
 SECTION : 22
 RANGE : 15W COUNTY : OSBORNE
 GAUGE SN# : 1566 RANGE : 4300
 TICKET : 14544
 LEASE : KOELLING
 GEOLOGIST : HOUSTON
 FORMATION : SAND
 TOWNSHIP : 10S
 STATE : KANSAS
 CLOCK : 12

INTERVAL FROM : 3344 TO : 3368 TOTAL DEPTH : 3368
 DEPTH OF SELECTIVE ZONE :
 PACKER DEPTH : 3339 SIZE : 6.75
 PACKER DEPTH : 3344 SIZE : 6.75
 PACKER DEPTH : SIZE :
 PACKER DEPTH : SIZE :

DRILLING CON. : STRATA RIG 3
 MUD TYPE : CHEMICAL VISCOSITY : 45
 WEIGHT : 9.5 WATER LOSS (CC) : 12.
 CHLORIDES (PPM) : 10000
 JARS-MAKE : SERIAL NUMBER :
 DID WELL FLOW ? : NO REVERSED OUT ? : NO

DRILL COLLAR LENGTH : 0 FT I.D. inch : 0.00
 WEIGHT PIPE LENGTH : 837 FT I.D. inch : 2.70
 DRILL PIPE LENGTH : 2485 FT I.D. inch : 3.80
 TEST TOOL LENGTH : 22 FT TOOL SIZE : 5.50
 ANCHOR LENGTH : 24 FT ANCHOR SIZE : 5.50
 SURFACE CHOKE SIZE : .75 IN BOTTOM CHOKE SIZE : .75
 MAIN HOLE SIZE : 7.875 IN TOOL JOINT SIZE : 4.5XH

BLOW COMMENT #1 : INITIAL FLOW PERIOD STRONG BLOW-BOTTOM OF
 BLOW COMMENT #2 : BUCKET IN 3 MINUTES.
 BLOW COMMENT #3 : FINAL FLOW PERIOD STRONG BLOW-10 INCHES
 BLOW COMMENT #4 : IN BUCKET.

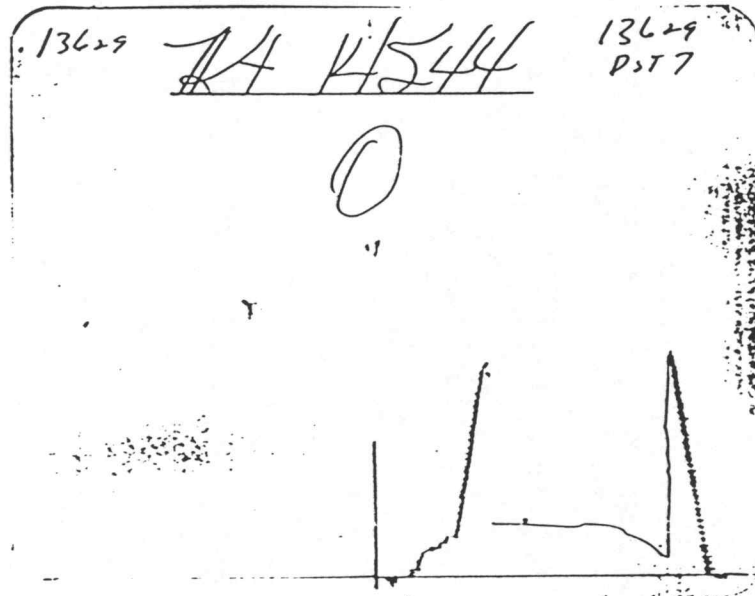


RECOVERED : 20 FT OF: FREE OIL 34 GRAVITY CORRECTED
 RECOVERED : 140 FT OF: OIL & WATER CUT MUD
 RECOVERED : 0 FT OF: 40% MUD;40% WTR;15% OIL;5%GAS
 RECOVERED : 90 FT OF: OIL CUT WATER
 RECOVERED : 0 FT OF: 20% MUD; 75% WTR; 5% OIL
 RECOVERED : 540 FT OF: SALTWATER W/SCUM OF OIL

Total Barrels Fluid = 5.59
 Total Fluid Prod Rate = 89.51 BFPD
 Indicated Oil Rate = 5.16 BOPD
 Indicated Wtr Rate = 75.17 BWPD
 Corrected Oil Rate = 93.95 BOPD
 Corrected Wtr Rate = 1370.08 BWPD

REMARK 1 :
 REMARK 2 : 110 FT OF GAS ABOVE FLUID
 REMARK 3 :
 REMARK 4 : CHLORIDES 27000 PPM

SET PACKER(S) : 12:35 PM TIME STARTED OFF BOTTOM : 3:35 PM
 WELL TEMPERATURE : 109
 INITIAL HYDROSTATIC PRESSURE (A) 1776
 INITIAL FLOW PERIOD MIN: 45 (B) 95 PSI TO (C) : 334
 INITIAL CLOSED IN PERIOD MIN: 45 (D) 407
 FINAL FLOW PERIOD MIN: 45 (E) 376 PSI TO (F) : 402
 FINAL CLOSED IN PERIOD MIN: 45 (G) 414
 FINAL HYDROSTATIC PRESSURE (H) 1733



COMPANY : BEREN CORPORATION
 WELL : 4
 GAUGE # : 1566
 DATE : 13/ 9/88

FIELD : KOELLING
 JOB # : 14544
 DEPTH : 3368
 TEST :

DATA No.	REAL TIME HR:MN:SS	ELAPSE TIME DELTA HOURS	PRESSURE PSIG	TEMP DEG F	DELTA P Pi-P(i-1)
INITIAL FLOW PERIOD					
2	12:35: 0	0.000	95.000	109.00	0.000
3	12:39:59	0.083	103.000	109.00	8.000
4	12:45: 0	0.167	155.000	109.00	52.000
5	12:50: 0	0.250	201.000	109.00	46.000
6	12:54:59	0.333	239.000	109.00	38.000
7	13: 0: 0	0.417	266.000	109.00	27.000
8	13: 5: 0	0.500	287.000	109.00	21.000
9	13: 9:59	0.583	306.000	109.00	19.000
10	13:15: 0	0.667	320.000	109.00	14.000
11	13:20: 0	0.750	334.000	109.00	14.000
INITIAL SHUT-IN PERIOD					
12	13:23: 0	0.800	364.000	109.00	30.000
13	13:26: 0	0.850	380.000	109.00	16.000
14	13:29: 0	0.900	387.000	109.00	7.000
15	13:32: 0	0.950	392.000	109.00	5.000
16	13:35: 0	1.000	396.000	109.00	4.000
17	13:38: 0	1.050	399.000	109.00	3.000
18	13:41: 0	1.100	401.000	109.00	2.000
19	13:44: 0	1.150	402.000	109.00	1.000
20	13:47: 0	1.200	403.000	109.00	1.000
21	13:50: 0	1.250	404.000	109.00	1.000
22	13:53: 0	1.300	405.000	109.00	1.000
23	13:56: 0	1.350	406.000	109.00	1.000
24	13:59: 0	1.400	407.000	109.00	1.000
25	14: 2: 0	1.450	407.000	109.00	0.000
26	14: 5: 0	1.500	407.000	109.00	0.000
FINAL FLOW PERIOD					
27	14: 6: 0	1.517	376.000	109.00	-31.000
28	14: 9:59	1.583	376.000	109.00	0.000
29	14:15: 0	1.667	376.000	109.00	0.000
30	14:20: 0	1.750	381.000	109.00	5.000
31	14:24:59	1.833	387.000	109.00	6.000
32	14:30: 0	1.917	391.000	109.00	4.000
33	14:35: 0	2.000	395.000	109.00	4.000
34	14:39:59	2.083	398.000	109.00	3.000
35	14:45: 0	2.167	400.000	109.00	2.000
36	14:50: 0	2.250	402.000	109.00	2.000
FINAL SHUT-IN PERIOD					
37	14:53: 0	2.300	406.000	109.00	4.000
38	14:56: 0	2.350	409.000	109.00	3.000
39	14:59: 0	2.400	411.000	109.00	2.000
40	15: 2: 0	2.450	412.000	109.00	1.000
41	15: 5: 0	2.500	412.000	109.00	0.000
42	15: 8: 0	2.550	413.000	109.00	1.000
43	15:11: 0	2.600	413.000	109.00	0.000
44	15:14: 0	2.650	414.000	109.00	1.000
45	15:17: 0	2.700	414.000	109.00	0.000
46	15:20: 0	2.750	414.000	109.00	0.000
47	15:23: 0	2.800	414.000	109.00	0.000
48	15:26: 0	2.850	414.000	109.00	0.000

COMPANY : BEREN CORPORATION
WELL : 4
GAUGE # : 1566
DATE : 13/ 9/88

FIELD : KOELLING
JOB # : 14544
DEPTH : 3368
TEST :

DATA No.	REAL TIME HR:MN:SS	ELAPSE TIME DELTA HOURS	PRESSURE PSIG	TEMP DEG F	DELTA P Pi-P(i-1)
49	15:29: 0	2.900	414.000	109.00	0.000
50	15:32: 0	2.950	414.000	109.00	0.000
51	15:35: 0	3.000	414.000	109.00	0.000

WESTERN TESTING CO. INC.