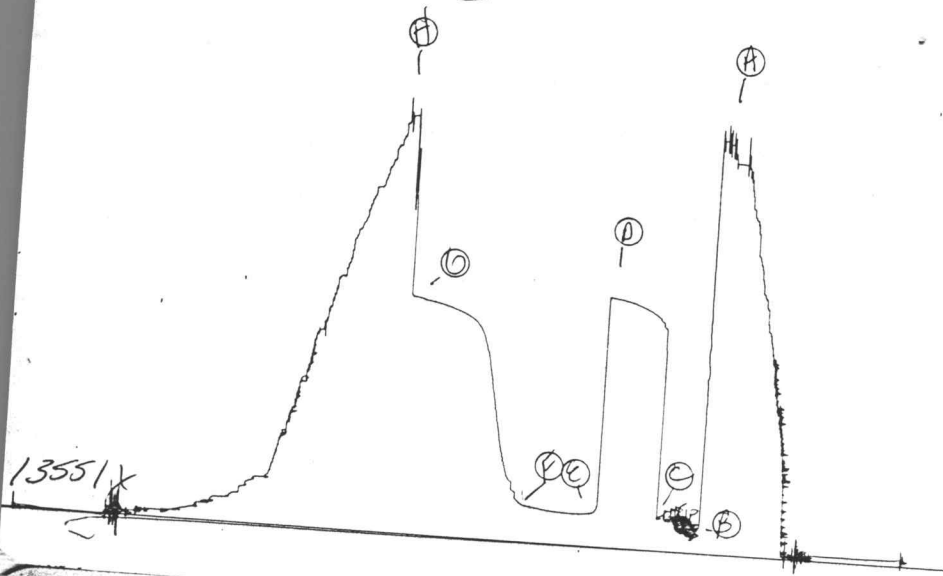


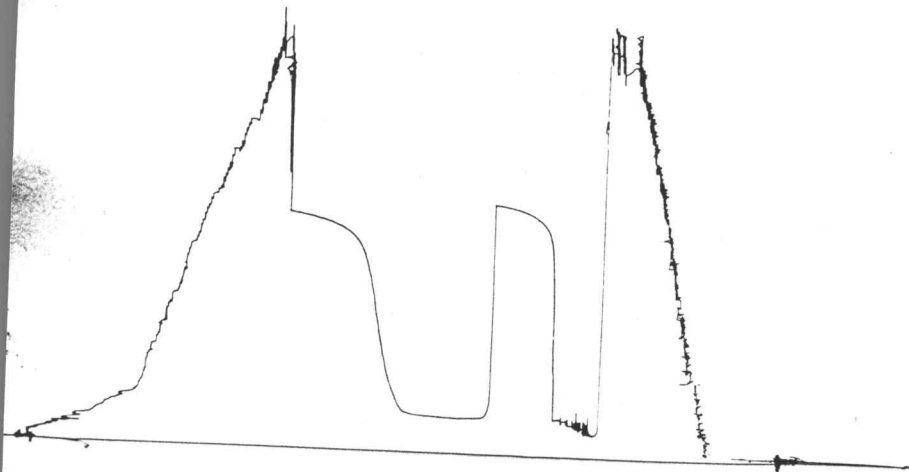
JK # 13317

I

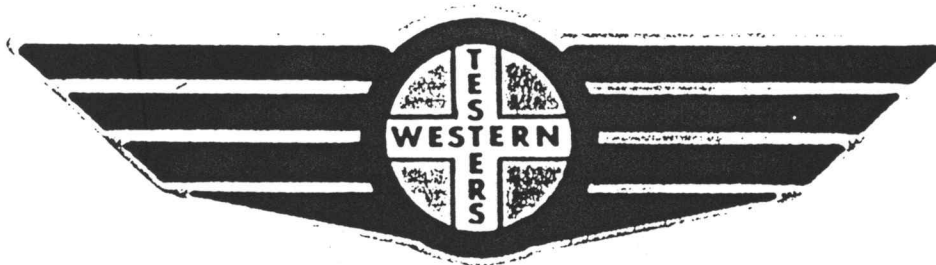


13551x

JK #13317
0



FORMATION TEST REPORT



Home Office:

Wichita, Kansas 67201

P.O. Box 1599

Phone (316) 262-5861

COMPANY DOUBLE EAGLE EXPLORATION, INC. LEASE & WELL NO. MCNINCH "B" #1 SEC. 2 TWP. 16S RGE. 25W TEST NO. 1 DATE 8/18/87

WESTERN TESTING CO. INC.
SUBSURFACE PRESSURE SURVEY

DATE : 8-18-87 TICKET : 13317
CUSTOMER : DOUBLE EAGLE EXPLORATION INC. LEASE : McNINCH 'B'
WELL : #1 TEST: 1 GEOLOGIST : H. DIXON
ELEVATION : 2557 GL FORMATION : FT. SCOTT
SECTION : 2 TOWNSHIP : 16S
RANGE : 25W COUNTY : NESS STATE : KANSAS
GAUGE SN# : 13551 RANGE : 4150 CLOCK : 12

INTERVAL FROM : 4410 TO : 4460 TOTAL DEPTH : 4460
DEPTH OF SELECTIVE ZONE :
PACKER DEPTH : 4405 SIZE : 6.63
PACKER DEPTH : 4410 SIZE : 6.63
PACKER DEPTH : SIZE :
PACKER DEPTH : SIZE :

DRILLING CON. : RAINS & WILLIAMSON RIG #2
MUD TYPE : CHEMICAL VISCOSITY : 44
WEIGHT : 9.3 WATER LOSS (CC) : 10.4
CHLORIDES (PPM) : 20000
JARS-MAKE : SERIAL NUMBER :
DID WELL FLOW ? : REVERSED OUT ? :

DRILL COLLAR LENGTH : 240 FT I.D. inch : 2.25
WEIGHT PIPE LENGTH : 0 FT I.D. inch : 0.00
DRILL PIPE LENGTH : 4150 FT I.D. inch : 3.80
TEST TOOL LENGTH : 20 FT TOOL SIZE : 5.50
ANCHOR LENGTH : 50 FT ANCHOR SIZE : 5.50
SURFACE CHOKE SIZE : .75 IN BOTTOM CHOKE SIZE : .75
MAIN HOLE SIZE : 7.875 IN TOOL JOINT SIZE : 4.5 XH

BLOW COMMENT #1 : INITIAL FLOW-WEAK SLOW BUILDING BLOW-7" IN BUCKET.
BLOW COMMENT #2 : FINAL FLOW-STRONG BLOW-BOTTOM OF BUCKET 10 MINUTES.
BLOW COMMENT #3 :
BLOW COMMENT #4 :

RECOVERED : 200 FT OF: CLEAN GASSY OIL 30 GRAVITY
RECOVERED : 60 FT OF: HEAVY OIL & GAS CUT MUD
50% MUD-40% OIL-10% GAS
RECOVERED : 120 FT OF: HEAVY OIL & GAS CUT MUD
30% MUD-15% OIL-55% GAS
RECOVERED : 120 FT OF: HEAVY OIL & GAS CUT MUD
15% MUD-40% OIL-45% GAS

Total Barrels Fluid = 4.83
Total Fluid Prod Rate = 81.78 BFPD
Indicated Oil Rate = 47.43 BOPD
Indicated Wtr Rate = 1.37 BWPD
Corrected Oil Rate = 28.45 BOPD
Corrected Wtr Rate = 0.82 BWPD

REMARK 1 :
REMARK 2 : RECOVERED 720 FEET OF GAS ABOVE FLUID.
REMARK 3 : SLIGHT PLUGGING ON THE INITIAL FLOW.
REMARK 4 :

SET PACKER(S) : 6:40 PM TIME STARTED OFF BOTTOM : 10:25 PM
WELL TEMPERATURE : 126
INITIAL HYDROSTATIC PRESSURE (A) 2287
INITIAL FLOW PERIOD MIN: 30 (B) 121 PSI TO (C) : 185
INITIAL CLOSED IN PERIOD MIN: 48 (D) 1352
FINAL FLOW PERIOD MIN: 55 (E) 164 PSI TO (F) : 187
FINAL CLOSED IN PERIOD MIN: 90 (G) 1285
FINAL HYDROSTATIC PRESSURE (H) 2267

COMPANY : DOUBLE EAGLE EXPLORATION INC.,
 WELL : #1
 GAUGE # : 13551
 DATE : 18/ 8/87

FIELD : McNINCH 'B'
 JOB # : 13317
 DEPTH : 4460
 TEST :

DATA No.	REAL TIME HR:MN:SS	ELAPSE TIME DELTA HOURS	PRESSURE PSIG	TEMP DEG F	DELTA P Pi-P(i-1)
1	6:40: 0	0.000	121.000	126.00	0.000
2	6:44:59	0.083	142.000	126.00	21.000
3	6:50: 0	0.167	185.000	126.00	43.000
4	6:55: 0	0.250	185.000	126.00	0.000
5	6:59:59	0.333	185.000	126.00	0.000
6	7: 5: 0	0.417	185.000	126.00	0.000
7	7:10: 0	0.500	185.000	126.00	0.000
8	7:13: 0	0.550	1201.000	126.00	1016.000
9	7:16: 0	0.600	1232.000	126.00	31.000
10	7:19: 0	0.650	1256.000	126.00	24.000
11	7:22: 0	0.700	1272.000	126.00	16.000
12	7:25: 0	0.750	1284.000	126.00	12.000
13	7:28: 0	0.800	1295.000	126.00	11.000
14	7:31: 0	0.850	1305.000	126.00	10.000
15	7:34: 0	0.900	1315.000	126.00	10.000
16	7:37: 0	0.950	1320.000	126.00	5.000
17	7:40: 0	1.000	1327.000	126.00	7.000
18	7:43: 0	1.050	1333.000	126.00	6.000
19	7:46: 0	1.100	1339.000	126.00	6.000
20	7:49: 0	1.150	1344.000	126.00	5.000
21	7:52: 0	1.200	1347.000	126.00	3.000
22	7:55: 0	1.250	1349.000	126.00	2.000
23	7:58: 0	1.300	1352.000	126.00	3.000
24	7:59: 0	1.317	164.000	126.00	-1188.000
25	8: 2:59	1.383	164.000	126.00	0.000
26	8: 8: 0	1.467	164.000	126.00	0.000
27	8:13: 0	1.550	164.000	126.00	0.000
28	8:17:59	1.633	164.000	126.00	0.000
29	8:23: 0	1.717	164.000	126.00	0.000
30	8:28: 0	1.800	165.000	126.00	1.000
31	8:32:59	1.883	167.000	126.00	2.000
32	8:38: 0	1.967	173.000	126.00	6.000
33	8:43: 0	2.050	178.000	126.00	5.000
34	8:47:59	2.133	184.000	126.00	6.000
35	8:53: 0	2.217	187.000	126.00	3.000
36	8:56: 0	2.267	204.000	126.00	17.000
37	8:59: 0	2.317	251.000	126.00	47.000
38	9: 2: 0	2.367	303.000	126.00	52.000
39	9: 5: 0	2.417	325.000	126.00	22.000
40	9: 8: 0	2.467	387.000	126.00	62.000
41	9:11: 0	2.517	472.000	126.00	85.000
42	9:14: 0	2.567	577.000	126.00	105.000
43	9:17: 0	2.617	688.000	126.00	111.000
44	9:20: 0	2.667	808.000	126.00	120.000
45	9:23: 0	2.717	921.000	126.00	113.000
46	9:26: 0	2.767	1025.000	126.00	104.000
47	9:29: 0	2.817	1095.000	126.00	70.000
48	9:32: 0	2.867	1139.000	126.00	44.000
49	9:35: 0	2.917	1168.000	126.00	29.000
50	9:38: 0	2.967	1187.000	126.00	19.000
51	9:41: 0	3.017	1199.000	126.00	12.000
52	9:44: 0	3.067	1210.000	126.00	11.000

COMPANY : DOUBLE EAGLE EXPLORATION INC.
WELL : #1
GAUGE # : 13551
DATE : 18/ 8/87

FIELD : McNINCH 'B'
JOB # : 13317
DEPTH : 4460
TEST :

DATA No.	REAL TIME HR:MN:SS	ELAPSE TIME DELTA HOURS	PRESSURE PSIG	TEMP DEG F	DELTA P $P_i - P_{(i-1)}$
53	9:47: 0	3.117	1220.000	126.00	10.000
54	9:50: 0	3.167	1225.000	126.00	5.000
55	9:53: 0	3.217	1233.000	126.00	8.000
56	9:56: 0	3.267	1241.000	126.00	8.000
57	9:59: 0	3.317	1247.000	126.00	6.000
58	10: 2: 0	3.367	1251.000	126.00	4.000
59	10: 5: 0	3.417	1256.000	126.00	5.000
60	10: 8: 0	3.467	1264.000	126.00	8.000
61	10:11: 0	3.517	1266.000	126.00	2.000
62	10:14: 0	3.567	1272.000	126.00	6.000
63	10:17: 0	3.617	1278.000	126.00	6.000
64	10:20: 0	3.667	1282.000	126.00	4.000
65	10:23: 0	3.717	1285.000	126.00	3.000

WESTERN TESTING CO. INC.

WESTERN TESTING CO. INC.
WICHITA - KANSAS

WELL TEST ANALYSIS REPORT
HORNER METHOD
SHUTIN No. 2

COMPANY DOUBLE EAGLE EXPLORATION INC.
DATE 8-18-87
FIELD McNINCH 'B'
WELL #1
AREA NESS-KANSAS
JOB NUMBER 13317
GAUGE NUMBER 13551
GAUGE DEPTH 4460
ZONE TESTED 4410-4460

PHASE : OIL FUNCTION : PRESSURE

=====I=N=P=U=T====D=A=T=A====S=U=M=M=A=R=Y=====

THICKNESS	H	6.0000E+00	Feet
POROSITY	POR	1.7000E-01	Frac
VISCOSITY	U	1.2000E+00	Cp
FORMATION VOLUME FACTOR	B	4.0000E-01	Rb/stb
TOTAL COMPRESSIBILITY	Ct	1.4500E-05	Psi ⁻¹
WELLBORE RADIUS	Rw	7.8000E-01	Feet
DRAINAGE RADIUS	Re	8.0000E+02	Feet
RESERVOIR TEMPERATURE	T	1.2600E+02	Deg F
GRAVITY OF FLUID	G	3.0000E+01	
PVT EVALUATION PRESSURE	P	0.0000E+00	Psig
PRESSURE AT SHUT-IN	Pwf	1.8700E+02	Psig
FINAL RECORDED PRESSURE	Ps	1.2850E+03	Psig
PRODUCTION RATE	Q	8.1780E+01	Bbl/day
TOTAL FLOW TIME	T	9.1700E-01	Hours

=====R=E=G=R=E=S=S=I=O=N====R=E=S=U=L=T=S=====

LEAST SQUARE RESULTS OVER THE INTERVAL :
FROM 2 TO 1

SLOPE OF THE LINE	6.9151E+02	psi/cycle
FALSE PRESSURE, PSTAR	1.4282E+03	psi
PRESSURE AT 1 HOUR	1.2328E+03	psi

=====A=N=A=L=Y=S=I=S====R=E=S=U=L=T=S=====

TRANSMISSIBILITYKh/u	7.6918E+00	md-ft/cp
FLOW CAPACITYKh	9.2301E+00	md-ft
PERMEABILITY to PHASE	K	1.5384E+00	md
DAMAGE RATIODr	6.7382E-01	
RADIUS OF INVESTIGATIONRinv	2.2429E+01	ft
SKIN FACTOR	S	-1.0008E+00	
AVERAGE PRESSUREPbar	1.4280E+03	psig
DIMENSIONLESS TIMETda	6.2618E-05	
MATTHEWS-BRONS-HAZEBROEKPDmbh	7.8689E-04	

COMPANY: DOUBLE EAGLE EXPLORATION INC.
 FIELD : MCNINCH B

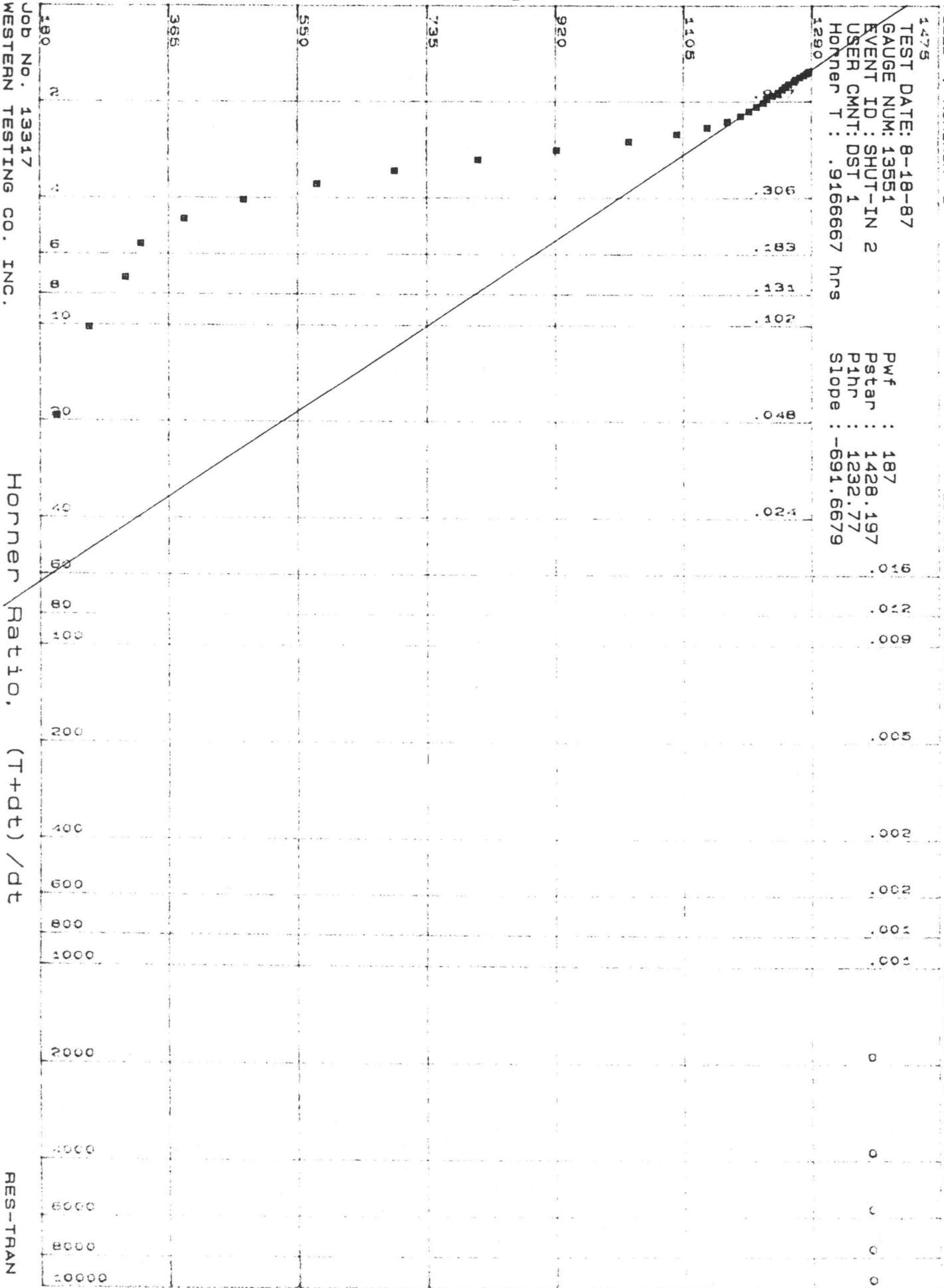
WELL # : 916
 LOCATION : #1 NESS-KANSAS

PROCESSED: 10-22-1987
 ENGINEER : LARRY KING

TEST DATE: 8-18-87
 GAUGE NUM: 13551
 EVENT ID : SHUT-IN 2
 USER CMNT: DST 1
 Horner T : .9166667 hrs

Pwf : 187
 Pstar : 1428.197
 P1hr : 1232.77
 Slope : -691.6679

Pressure, Psig



Job No. 13317
 WESTERN TESTING CO. INC.

Horner Ratio, (T+dt) / dt

RES-TRAN

COMPANY: DOUBLE EAGLE EXPLORATION INC.
FIELD: MCNINCH B

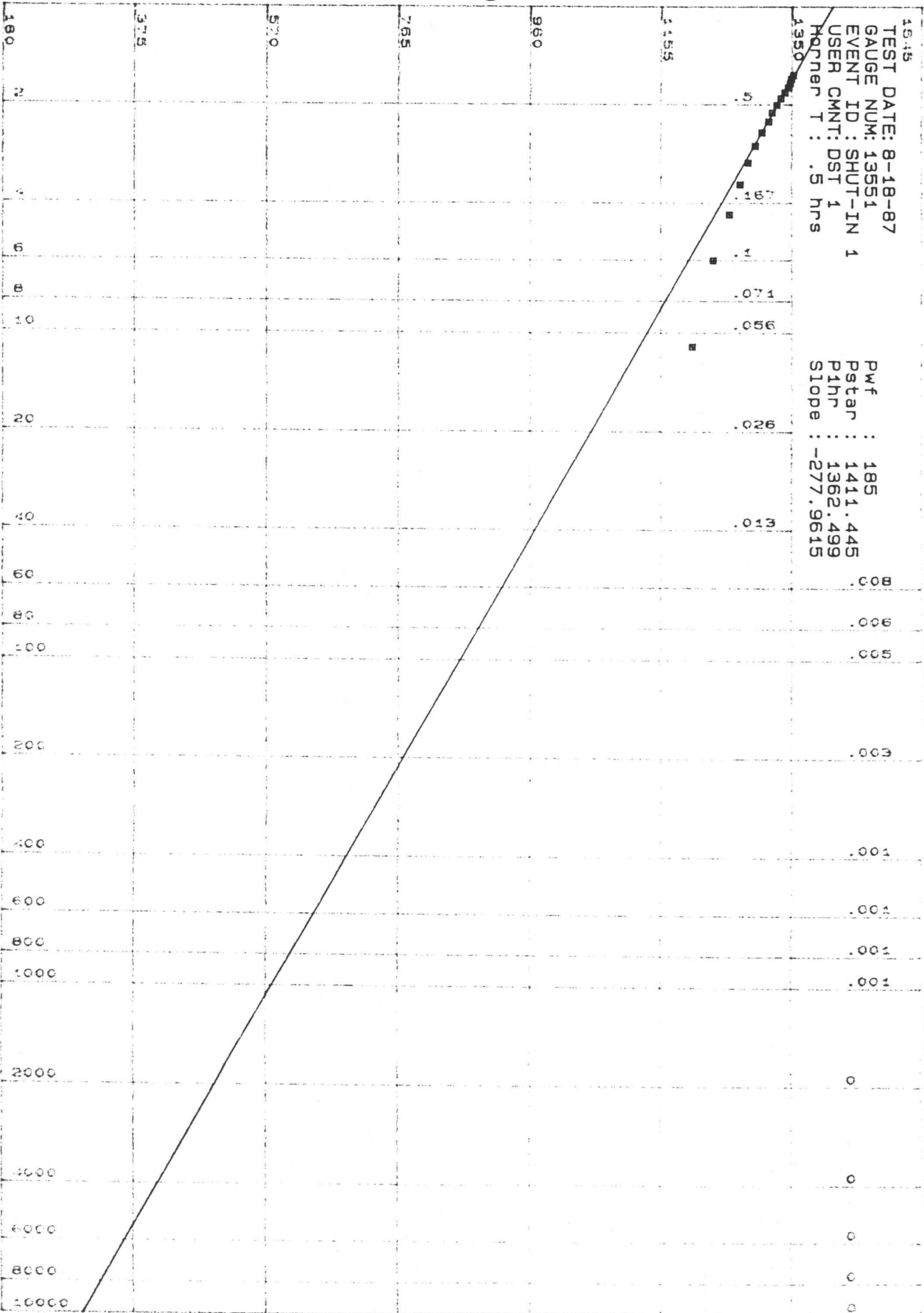
WELL #1
LOCATION: NESS-KANSAS

PROCESSED: 10-22-1987
ENGINEER: LARRY KING

TEST DATE: 8-18-87
GAUGE NUM: 13551
EVENT ID: SHUT-IN 1
USER CMNT: DST 1
Horner T: .5 hrs

Pwf : 185
Pstar : 1411.445
P1hr : 1362.499
Slope : -277.9615

Pressure, Psig



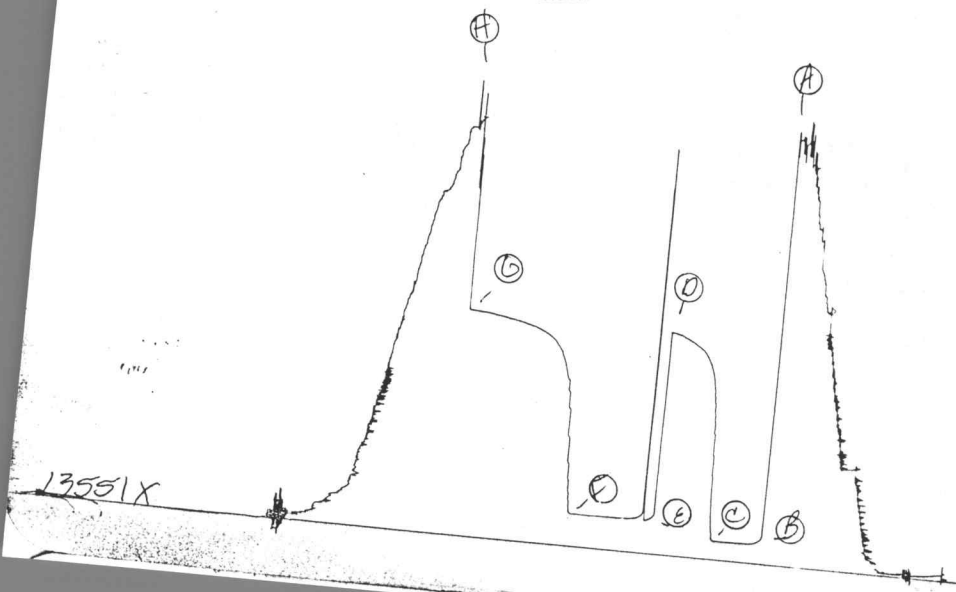
Job No. 13317
WESTERN TESTING CO. INC.

Horner Ratio, (T+dt) / dt

RES-TRAN

Alt # 13318

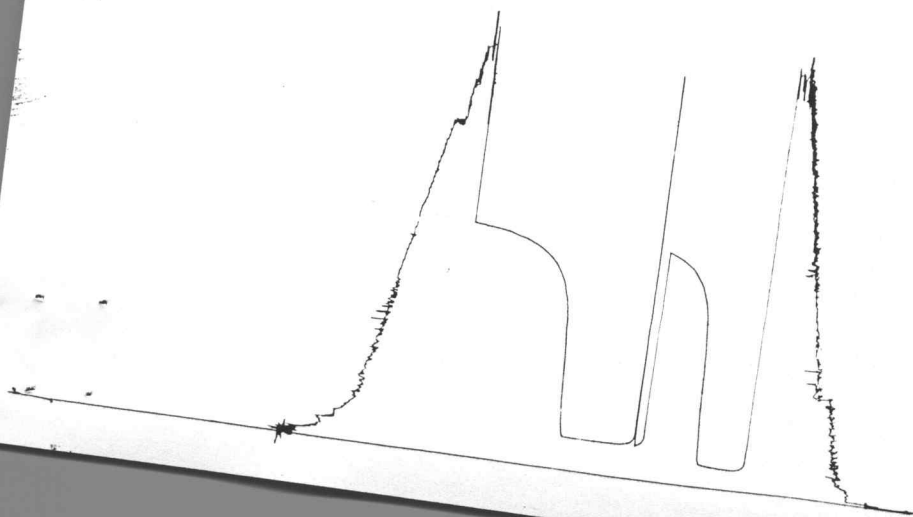
I



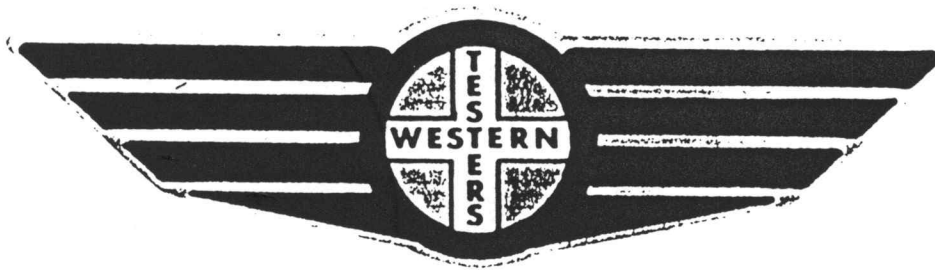
13551X

It # 13318

0



FORMATION TEST REPORT



Home Office:

Wichita, Kansas 67201

P.O. Box 1599

Phone (316) 262-5861

COMPANY _____ DOUBLE EAGLE EXPLORATION, INC. LEASE & WELL NO. _____ MCNINCH "B" #1 _____ SEC. 2 TWP. 16S RGE. 25W TEST NO. _____ DATE 8/19/87

WESTERN TESTING CO. INC.
SUBSURFACE PRESSURE SURVEY

DATE : 8-19-87 TICKET : 13318
CUSTOMER : DOUBLE EAGLE EXPLORATION INC. LEASE : McNINCH 'B'
WELL : #1 TEST: 2 GEOLOGIST : H. DIXON
ELEVATION : 2557 GL FORMATION : MISSISSIPPI
SECTION : 2 TOWNSHIP : 16S
RANGE : 25W COUNTY : NESS STATE : KANSAS
GAUGE SN# : 13551 RANGE : 4150 CLOCK : 12

INTERVAL FROM : 4492 TO : 4530 TOTAL DEPTH : 4530
DEPTH OF SELECTIVE ZONE :
PACKER DEPTH : 4487 SIZE : 6.63
PACKER DEPTH : 4492 SIZE : 6.63
PACKER DEPTH : SIZE :
PACKER DEPTH : SIZE :

DRILLING CON. : RAINS & WILLIAMSON RIG #2
MUD TYPE : CHEMICAL VISCOSITY : 48
WEIGHT : 9.3 WATER LOSS (CC) : 16
CHLORIDES (PPM) : 17000
JARS-MAKE : - SERIAL NUMBER : -
DID WELL FLOW ? : - REVERSED OUT ? : -

DRILL COLLAR LENGTH : 180 FT I.D. inch : 2.25
WEIGHT PIPE LENGTH : 0 FT I.D. inch : 0.00
DRILL PIPE LENGTH : 4292 FT I.D. inch : 3.80
TEST TOOL LENGTH : 20 FT TOOL SIZE : 5.50
ANCHOR LENGTH : 38 FT ANCHOR SIZE : 5.50
SURFACE CHOKE SIZE : .75 IN BOTTOM CHOKE SIZE : .75
MAIN HOLE SIZE : 7.875 IN TOOL JOINT SIZE : 4.5 XH

BLOW COMMENT #1 : INITIAL FLOW-WEAK SLOW BUILD TO 7" IN BUCKET.
BLOW COMMENT #2 : FINAL FLOW-WEAK BLOW-FLUSHED TOOL-GOOD SURGE-WEAK
SLOW BUILD TO 10" IN BUCKET.
BLOW COMMENT #3 :
BLOW COMMENT #4 :

RECOVERED : 165 FT OF: MUD & GAS CUT OIL
85% OIL-10% GAS-5% MUD
RECOVERED : 120 FT OF: OIL & GAS CUT MUD
45% OIL-10% GAS-45% MUD

Total Barrels Fluid = 2.36
Total Fluid Prod Rate = 35.74 BFPD
Indicated Oil Rate = 24.45 BOPD
Indicated Wtr Rate = 0.78 BWPD
Corrected Oil Rate = 25.78 BOPD
Corrected Wtr Rate = 0.82 BWPD

REMARK 1 :
REMARK 2 : RECOVERED 200 FEET OF GAS ABOVE FLUID.
REMARK 3 :
REMARK 4 :

SET PACKER(S) : 3:55 PM
WELL TEMPERATURE : 132
INITIAL HYDROSTATIC PRESSURE (A) 2305
INITIAL FLOW PERIOD MIN: 35 (B) 88 PSI TO (C) : 88
INITIAL CLOSED IN PERIOD MIN: 48 (D) 1206
FINAL FLOW PERIOD MIN: 60 (E) 200 PSI TO (F) : 166
FINAL CLOSED IN PERIOD MIN: 90 (G) 1220
FINAL HYDROSTATIC PRESSURE (H) 2258
TIME STARTED OFF BOTTOM : 7:40 PM

WESTERN TESTING CO. INC.
WICHITA - KANSAS

Pressure Transient Report

COMPANY : DOUBLE EAGLE EXPLORATION INC.
RIG : NESS-KANSAS
FIELD : McNINCH 'B'
WELL : #1
DATE : 8-19-87
GAUGE NO : 13551

OPERATIONAL COMMENTS

FLUSHED TOOL FINAL FLOW
RECOVERED 200 FEET OF GAS ABOVE FLUID.

COMPANY : DOUBLE EAGLE EXPLORATION INC..
WELL : #1
GAUGE # : 13551
DATE : 19/ 8/87

FIELD : McNINCH 'B'
JOB # : 13318
DEPTH : 4530
TEST : FLUSHED TOOL FINAL FLOW

DATA No.	REAL TIME HR:MN:SS	ELAPSE TIME DELTA HOURS	PRESSURE PSIG	TEMP DEG F	DELTA P $P_i - P_{(i-1)}$
1	3:55: 0	0.000	88.000	132.00	0.000
2	3:59:59	0.083	88.000	132.00	0.000
3	4: 5: 0	0.167	88.000	132.00	0.000
4	4:10: 0	0.250	88.000	132.00	0.000
5	4:14:59	0.333	88.000	132.00	0.000
6	4:20: 0	0.417	88.000	132.00	0.000
7	4:25: 0	0.500	88.000	132.00	0.000
8	4:29:59	0.583	88.000	132.00	0.000
9	4:32:59	0.633	240.000	132.00	152.000
10	4:35:59	0.683	549.000	132.00	309.000
11	4:38:59	0.733	791.000	132.00	242.000
12	4:41:59	0.783	953.000	132.00	162.000
13	4:44:59	0.833	1031.000	132.00	78.000
14	4:47:59	0.883	1077.000	132.00	46.000
15	4:50:59	0.933	1112.000	132.00	35.000
16	4:53:59	0.983	1130.000	132.00	18.000
17	4:56:59	1.033	1145.000	132.00	15.000
18	4:59:59	1.083	1159.000	132.00	14.000
19	5: 2:59	1.133	1171.000	132.00	12.000
20	5: 5:59	1.183	1181.000	132.00	10.000
21	5: 8:59	1.233	1192.000	132.00	11.000
22	5:11:59	1.283	1200.000	132.00	8.000
23	5:14:59	1.333	1204.000	132.00	4.000
24	5:17:59	1.383	1206.000	132.00	2.000
25	5:19: 0	1.400	200.000	132.00	-1006.000
26	5:22:59	1.467	171.000	132.00	-29.000
27	5:28: 0	1.550	186.000	132.00	15.000
28	5:32:59	1.633	173.000	132.00	-13.000
29	5:37:59	1.717	167.000	132.00	-6.000
30	5:43: 0	1.800	166.000	132.00	-1.000
31	5:47:59	1.883	166.000	132.00	0.000
32	5:52:59	1.967	166.000	132.00	0.000
33	5:58: 0	2.050	166.000	132.00	0.000
34	6: 2:59	2.133	166.000	132.00	0.000
35	6: 7:59	2.217	166.000	132.00	0.000
36	6:13: 0	2.300	166.000	132.00	0.000
37	6:17:59	2.383	166.000	132.00	0.000
38	6:20:59	2.433	228.000	132.00	62.000
39	6:23:59	2.483	451.000	132.00	223.000
40	6:26:59	2.533	732.000	132.00	281.000
41	6:29:59	2.583	886.000	132.00	154.000
42	6:32:59	2.633	931.000	132.00	45.000
43	6:35:59	2.683	999.000	132.00	68.000
44	6:38:59	2.733	1045.000	132.00	46.000
45	6:41:59	2.783	1073.000	132.00	28.000
46	6:44:59	2.833	1102.000	132.00	29.000
47	6:47:59	2.883	1119.000	132.00	17.000
48	6:50:59	2.933	1134.000	132.00	15.000
49	6:53:59	2.983	1145.000	132.00	11.000
50	6:56:59	3.033	1153.000	132.00	8.000
51	6:59:59	3.083	1164.000	132.00	11.000
52	7: 2:59	3.133	1170.000	132.00	6.000

COMPANY : DOUBLE EAGLE EXPLORATION INC.
WELL : #1
GAUGE # : 13551
DATE : 19/ 8/87

FIELD : McNINCH 'B'
JOB # : 13318
DEPTH : 4530
TEST : FLUSHED TOOL FINAL FLOW

DATA No.	REAL TIME HR:MN:SS	ELAPSE TIME DELTA HOURS	PRESSURE PSIG	TEMP DEG F	DELTA P Pi-P(i-1)
53	7: 5:59	3.183	1176.000	132.00	6.000
54	7: 8:59	3.233	1181.000	132.00	5.000
55	7:11:59	3.283	1185.000	132.00	4.000
56	7:14:59	3.333	1192.000	132.00	7.000
57	7:17:59	3.383	1195.000	132.00	3.000
58	7:20:59	3.433	1197.000	132.00	2.000
59	7:23:59	3.483	1203.000	132.00	6.000
60	7:26:59	3.533	1205.000	132.00	2.000
61	7:29:59	3.583	1208.000	132.00	3.000
62	7:32:59	3.633	1210.000	132.00	2.000
63	7:35:59	3.683	1215.000	132.00	5.000
64	7:38:59	3.733	1217.000	132.00	2.000
65	7:41:59	3.783	1218.000	132.00	1.000
66	7:44:59	3.833	1219.000	132.00	1.000
67	7:47:59	3.883	1220.000	132.00	1.000

WESTERN TESTING CO. INC.

WESTERN TESTING CO. INC.
WICHITA - KANSAS

WELL TEST ANALYSIS REPORT
HORNER METHOD
SHUTIN No. 2

COMPANY DOUBLE EAGLE EXPLORATION INC.
DATE 8-19-87
FIELD McNINCH 'B'
WELL #1
AREA NESS-KANSAS
JOB NUMBER 13318
GAUGE NUMBER 13551
GAUGE DEPTH 4530
ZONE TESTED 4492-4530

PHASE : OIL FUNCTION : PRESSURE

=====I=N=P=U=T====D=A=T=A====S=U=M=M=A=R=Y=====

THICKNESS	H	4.0000E+00	Feet
POROSITY	POR	1.5000E-01	Frac
VISCOSITY	U	1.2000E+00	Cp
FORMATION VOLUME FACTOR	B	4.0000E-01	Rb/stb
TOTAL COMPRESSIBILITY	Ct	1.7000E-05	Psi ⁻¹
WELLBORE RADIUS	Rw	7.8000E-01	Feet
DRAINAGE RADIUS	Re	8.0000E+02	Feet
RESERVOIR TEMPERATURE	T	1.3200E+02	Deg F
GRAVITY OF FLUID	G	3.0000E+01	
PVT EVALUATION PRESSURE	P	0.0000E+00	Psig
PRESSURE AT SHUT-IN	Pwf	1.6600E+02	Psig
FINAL RECORDED PRESSURE	Ps	1.2200E+03	Psig
PRODUCTION RATE	Q	3.5740E+01	Bbl/day
TOTAL FLOW TIME	T	1.0000E+00	Hours

=====R=E=G=R=E=S=S=I=O=N====R=E=S=U=L=T=S=====

LEAST SQUARE RESULTS OVER THE INTERVAL :
FROM 2.2 TO 1.8

SLOPE OF THE LINE	3.5723E+02	psi/cycle
FALSE PRESSURE, PSTAR	1.3020E+03	psi
PRESSURE AT 1 HOUR	1.1945E+03	psi

=====A=N=A=L=Y=S=I=S====R=E=S=U=L=T=S=====

TRANSMISSIBILITYKh/u	6.5071E+00	md-ft/cp
FLOW CAPACITYKh	7.8085E+00	md-ft
PERMEABILITY to PHASE	K	1.9521E+00	md
DAMAGE RATIODr	1.1395E+00	
RADIUS OF INVESTIGATIONRinv	2.5941E+01	ft
SKIN FACTOR	S	4.4843E-01	
AVERAGE PRESSUREPbar	1.3018E+03	psig
DIMENSIONLESS TIMETda	8.3765E-05	
MATTHEWS-BRONS-HAZEBROEKPDmbh	1.0526E-03	

COMPANY: DOUBLE EAGLE EXPLORATION INC.
FIELD: MCININCH B

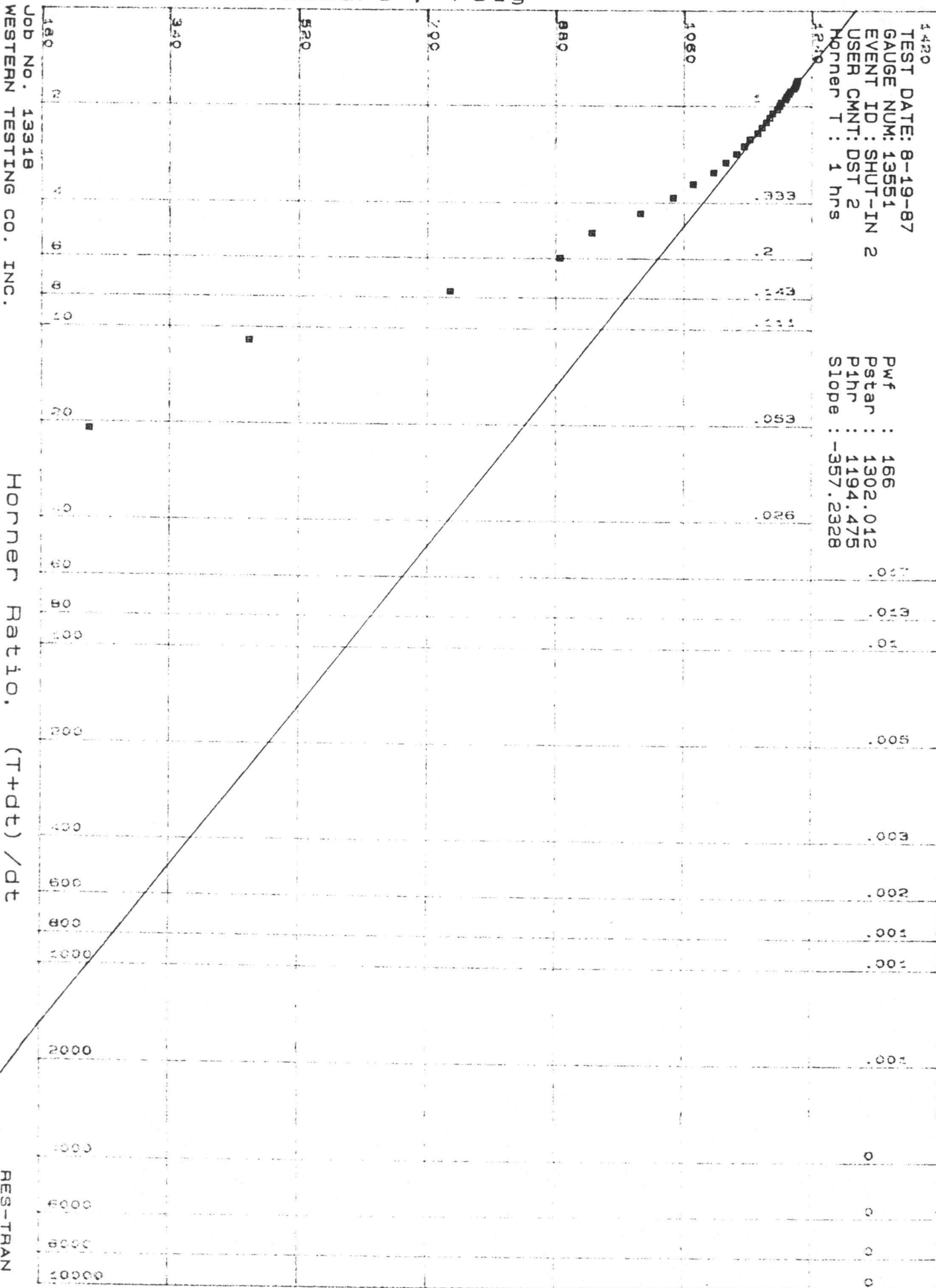
WELL LOCATION: #1 NESS-KANSAS

PROCESSED: 10-22-1987
ENGINEER: LARRY KING

TEST DATE: 8-19-87
GAUGE NUM: 13551
EVENT ID: SHUT-IN 2
USER CMNT: DST 2
Horner T: 1 hrs

Pwf : 166
Pstar : 1302.012
P1hr : 1194.475
Slope : -357.2328

Pressure, Psig



Job No. 13318
WESTERN TESTING CO. INC.

Horner Ratio, (T+dt) / dt

RES-TRAN

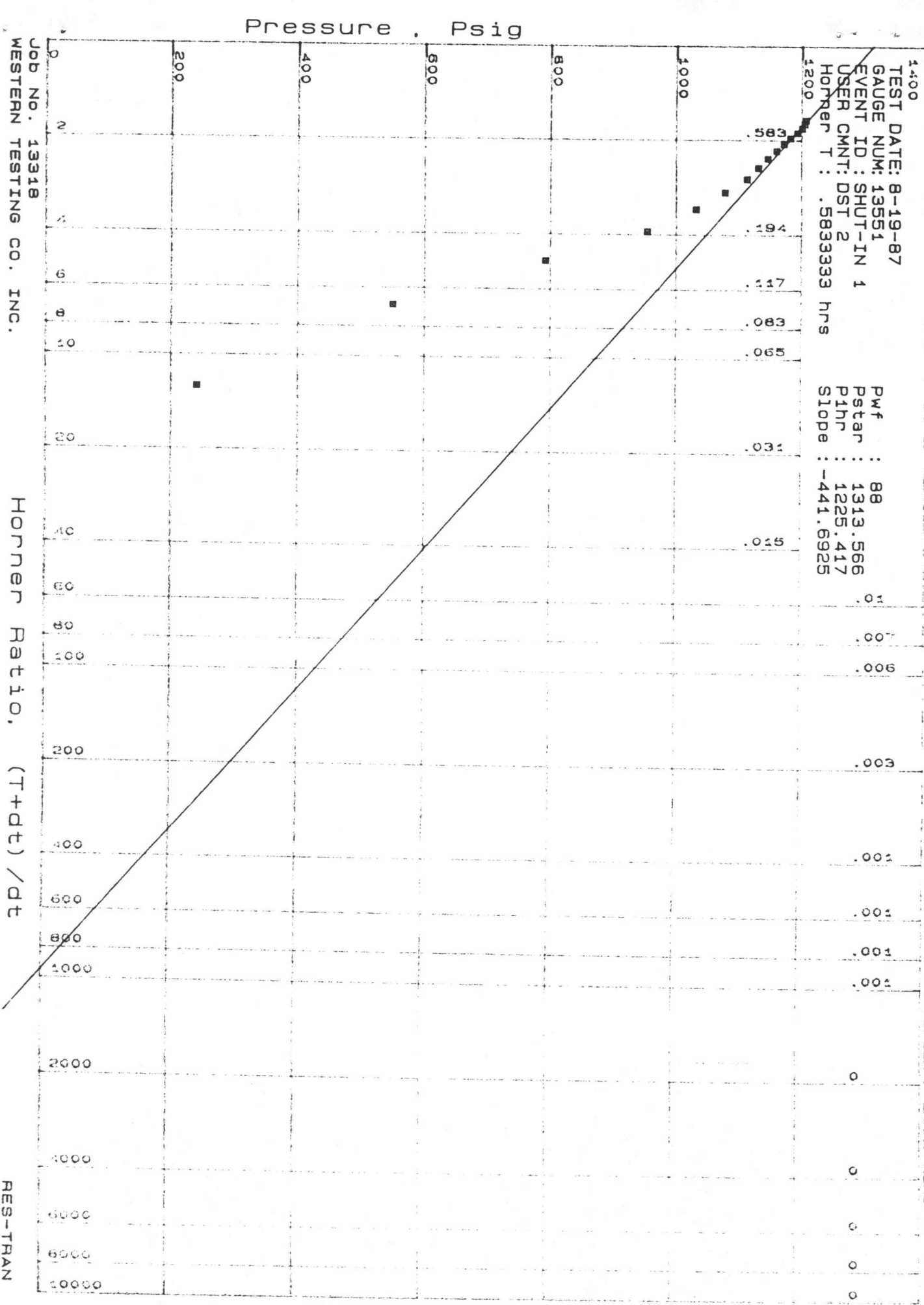
COMPANY: DOUBLE EAGLE EXPLORATION INC.
 FIELD: MCNINCH B

WELL LOCATION: #1 NESS-KANSAS

PROCESSED: 10-22-1987
 ENGINEER: LARRY KING

TEST DATE: 8-19-87
 GAUGE NUM: 13551
 EVENT ID: SHUT-IN 1
 USER CMNT: DST 2
 Horner T: .5833333 hrs

Pwf : 88
 Pstar : 1313.566
 P1hr : 1225.417
 Slope : -441.6925



Job No. 13318
 WESTERN TESTING CO. INC.

Horner Ratio, (T+dt) / dt

RES-TRAN