

Sec. 5 Twp. 27 Range 6 E

#4 Doughty

Kansas Geological Society

Air Capitol Oil + Gas

Skelly Scout Tickets

Butler

FORM 252A-5M-12-28-PETROL

Map No. **KANSAS** Sec. 5 Twp. 27 R. 6

Well No. 4 - Woughty Farm

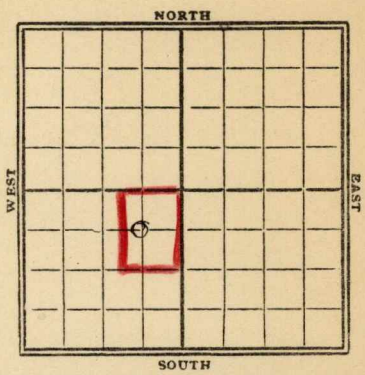
Air Capital Oil & Gas Company

660 Ft. from N. Line

\_\_\_\_\_ Ft. from S. Line

660 Ft. from E. Line

\_\_\_\_\_ Ft. from W. Line



1929

Date	REPORT
	30 A. track
1/16	Only 500'
1/23	" 1430'
1/30	" 2125'
2/6	sand 2714 - 30'
	T.D. 2740'
	shot 80 gts
	100 bbl oil
	Pump.

*Butler*

*K11* **KANSAS** Sec. *5* Twp. *27* R. *6*

Well No. *4* *Doughty*

*Air Capital Oil Co* Company

Contractor

**FIRST REPORTS**

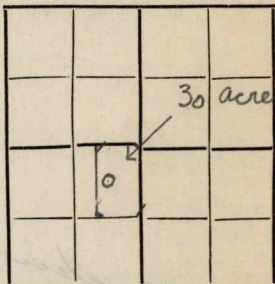
**SECTION PLAT**

*660* Ft. from N. Line

..... Ft. from S. Line

*660* Ft. from E. Line

..... Ft. from W. Line



Location.....

Rig up *dry 500'*

Drilling and Remarks:

*this 30 acres was carried as blue stem oil. but air capital oil now have it.*

**RECORD**

Cased..... in., ..... ft.

Sand.....

Gas.....

Oil.....

Total Depth.....

**PRODUCTION**

1st 24 hrs. Nat.....

1st 24 hrs. after shot.....

Gas..... Cu. Ft.

Dry Hole.....

Abandoned.....

Date

**JAN 16 1929**

**CHAS. L. SHERWOOD**

192.....

Scout

Butler

Map No. **KANSAS** Sec. 5 Twp. 27 R. 6

Well No. 4 Doughty

Air Capital Oil Co Company

Contractor

**COMPLETE**

SECTION PLAT

660 Ft. from N. Line

..... Ft. from S. Line

660 Ft. from E. Line

..... Ft. from W. Line


Location.....

Rig up.....

Drilling and Remarks:

80/100 BS

RECORD

Cased..... in., ..... ft.

Sand 2714-2730

Gas.....

Oil.....

Total Depth 2740'

PRODUCTION

1st 24 hrs. Nat.....

1st 24 hrs. after shot.....

Gas..... Cu. Ft.

Dry Hole.....

Abandoned.....

Date **FEB 6 1929**

**CHAS. L. SHERWOOD**

.....192..... Scout

Form 51-5M-9-28-27423

Map No. *Butler* **KANSAS** Sec. *5* Twp. *27* R. *6*

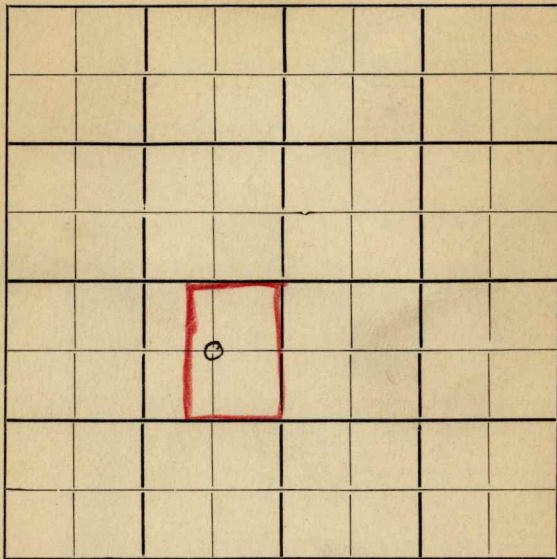
Well No. *H - Daugherty* Farm

*Air Capital O & G* Company

NORTH

WEST

EAST



SOUTH

*30 A. Tract*

Location.....

Rig Up.....

Drilling Remarks

Drilling Remarks

.....

.....

.....

.....