

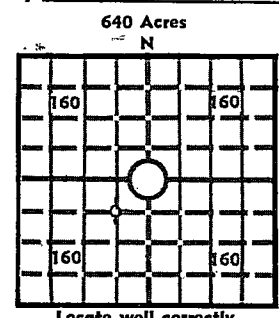
IMPORTANT
Kans. Geo. Survey request
samples on this well.

15-047-20318

S. 35 T. 26 R. 17 E
W

Loc. C NE SW

County Edwards



Elev.: Gr. 2108

DF 2111 KB 2113

API No. 15 — 047 — 20,318
County Number

Operator
F. G. Holl

Address
6427 East Kellogg Wichita, Kansas 67207

Well No. #1 Lease Name C. O. Fisher

Footage Location
660 feet from (N) S line 660 feet from (E) W line

Principal Contractor DaMac Drilling Inc. Geologist Carl Todd

Spud Date 1-4-78 Total Depth 4670 P.B.T.D.

Date Completed 1-11-78 Oil Purchaser

CASING RECORD

Report of all strings set— surface, intermediate, production, etc.

Purpose of string	Size hole drilled	Size casing set (in O.D.)	Weight lbs/ft.	Setting depth	Type cement	Sacks	Type and percent additives
Surface		8 5/8		319	Class A Cement	275	2% Gel 3% cc

LINER RECORD

PERFORATION RECORD

Top, ft.	Bottom, ft.	Sacks cement	Shots per ft.	Size & type	Depth interval

TUBING RECORD

Size	Setting depth	Packer set at

ACID, FRACTURE, SHOT, CEMENT SQUEEZE RECORD

Amount and kind of material used	Depth interval treated

INITIAL PRODUCTION

Date of first production		Producing method (flowing, pumping, gas lift, etc.)			
RATE OF PRODUCTION PER 24 HOURS	Oil bbls.	Gas MCF	Water bbls.	Gas-oil ratio	CFPB
Disposition of gas (vented, used on lease or sold)			Producing interval (s)		

INSTRUCTIONS: As provided in KCC Rule 82-2-125, within 90 days after completion of a well, one completed copy of this Drillers Log shall be transmitted to the State Geological Survey of Kansas, 4150 Monroe Street, Wichita, Kansas 67209. Copies of this form are available from the Conservation Division, State Corporation Commission, 3830 So. Meridian (P.O. Box 17027), Wichita, Kansas 66217. Phone AC 316-522-2206. If confidential custody is desired, please note Rule 82-2-125. Drillers Logs will be on open file in the Oil and Gas Division, State Geological Survey of Kansas, Lawrence, Kansas 66044.

Operator **F. G. HOLL** DESIGNATE TYPE OF COMP.: OIL, GAS, DRY HOLE, SWDW, ETC.:

Well No. **1** Lease Name **C. O. FISHER** DRY HOLE

S 35 T 26 R 17 ~~E~~ W

WELL LOG

Show all important zones of porosity and contents thereof; cored intervals, and all drill-stem tests, including depth interval tested, cushion used, time tool open, flowing and shut-in pressures, and recoveries.

SHOW GEOLOGICAL MARKERS, LOGS RUN, OR OTHER DESCRIPTIVE INFORMATION.

FORMATION DESCRIPTION, CONTENTS, ETC.	TOP	BOTTOM	NAME	DEPTH
Gamma - Neutron			Anhy	1170
Guard - Caliper			Heebner	3908
			Br. lm.	4052
			Lansing	4070
			B. K.C.	4422
			Chero. Sh.	4553
			Chero. Sd.	4580
			Miss.	4617
			RTD	4670
<p>DST NO. 1: 4573 - 4632</p> <p>30-20-30-30</p> <p>Weak blow for 22 minutes and died Recovered 40' muddy water No show of oil or gas Flow pressures were 92 PSI throughout BHP 595/774 PSI</p>				

USE ADDITIONAL SHEETS, IF NECESSARY, TO COMPLETE WELL RECORD.

Date Received	<i>Elwyn H. Nagel</i>	
	Elwyn H. Nagel	Signature
		Geologist
		Title
	January 12, 1978	
	Date	

Handwritten notes at bottom left corner.