

22-26-32W

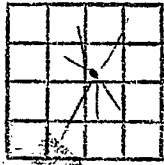
WELL LOG BUREAU--KANSAS GEOLOGICAL SOCIETY
508 East Murdock, Wichita, Kansas

Company- CHAMPLIN REFINING COMPANY
Farm-Lawrence Aloysius No. 1
Ohmes

SEC. 22 T. 26 R. 32W
SW SW NE
2310' fr NL & 2310' fr EL NE/4

Total Depth. 2762
Comm. 6-28-53 Comp. 7-6-53
Shot or Treated.
Contractor.
Issued. 10-17-53

County Finney
KANSAS



Elevation. 2879 G.L.

Production. 7,250,000 Gas

CASING:

10 3/4" 492.75' cem. w/375 sx
7" 2768.64' cem. w/850 sx

Figures Indicate Bottom of Formations.

sand 165
shale, sand, shells 500
shale, shells 1080
shale, anhydrite 1355
shale, red bed, shells
salt 1770
shale, anhydrite, salt 1945
shale, lime 2762
Total Depth

Tops:
Herington 2639
Krider 2663
Winfield 2718

G.L. to K.B. 2.5'