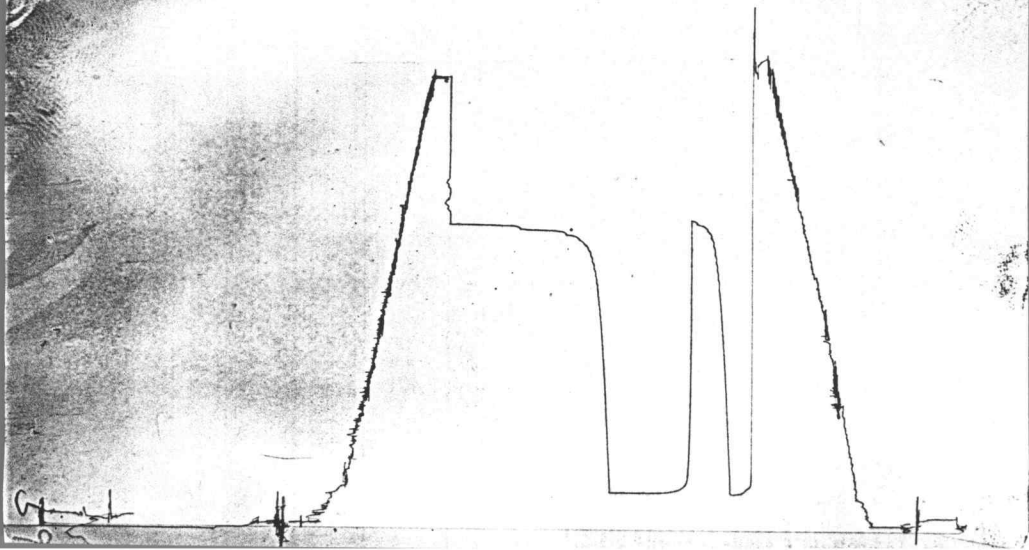
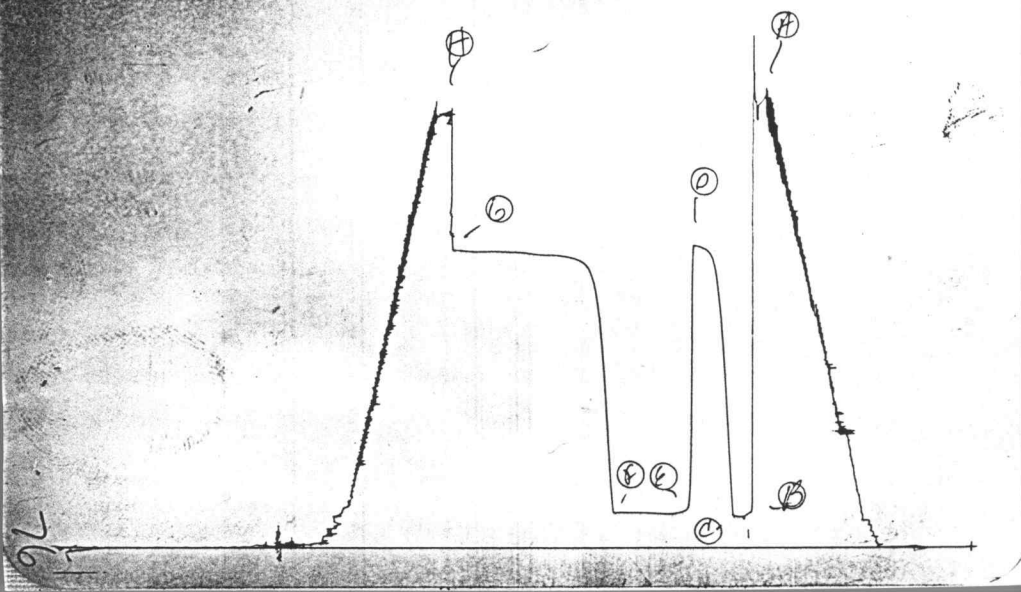


JK #13419
①

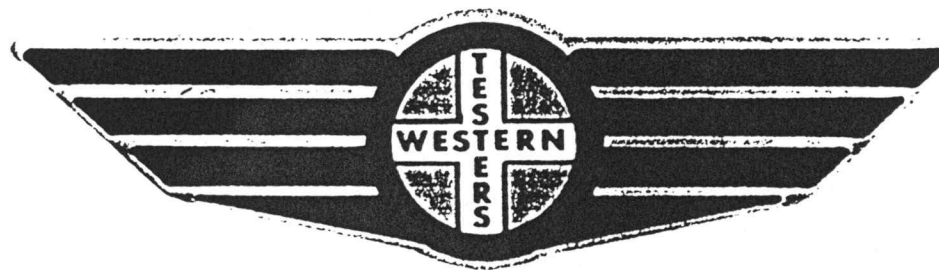


JK # 13419

I



FORMATION TEST REPORT



Home Office:

Wichita, Kansas 67201

P.O. Box 1599

Phone (316) 262-5861

COMPANY PETROLEUM, INC. LEASE & WELL NO. VIEUX G#1 SEC. 3 TWP. 29 RGE. 18W TEST NO. 2 DATE 10-6-87

WESTERN TESTING CO. INC.
SUBSURFACE PRESSURE SURVEY

DATE : 10-6-87
CUSTOMER : PETROLEUM INC.
WELL : G-1 TEST: 2
ELEVATION : 2261
SECTION : 3
RANGE : 18W COUNTY : KIOWA
GAUGE SN# : 4376 RANGE : 4000

TICKET : 13419
LEASE : VIEUX
GEOLOGIST :
FORMATION :
TOWNSHIP : 29S
STATE : KANSAS
CLOCK : 12

INTERVAL FROM : 4707 TO : 4840 TOTAL DEPTH : 4840
DEPTH OF SELECTIVE ZONE :
PACKER DEPTH : 4702 SIZE : 4707
PACKER DEPTH : 4707 SIZE : 6.63
PACKER DEPTH : SIZE :
PACKER DEPTH : SIZE :

DRILLING CON. : BLUE GOOSE RIG #2
MUD TYPE : CHEMICAL VISCOSITY : 42
WEIGHT : 9.3 WATER LOSS (CC) : 14.0
CHLORIDES (PPM) : 10000
JARS-MAKE : SERIAL NUMBER :
DID WELL FLOW ? : REVERSED OUT ? :

DRILL COLLAR LENGTH : 302 FT I.D. inch : 2.25
WEIGHT PIPE LENGTH : 0 FT I.D. inch : 0.00
DRILL PIPE LENGTH : 4373 FT I.D. inch : 3.80
TEST TOOL LENGTH : 22 FT TOOL SIZE : 5.50
ANCHOR LENGTH : 133 FT ANCHOR SIZE : 5.50
SURFACE CHOKE SIZE : .75 IN BOTTOM CHOKE SIZE : .75
MAIN HOLE SIZE : 7.875 IN TOOL JOINT SIZE : 4.5 XH

BLOW COMMENT #1 : INITIAL FLOW STRONG BLOW OFF BOTTOM IN 3 MINUTES.
BLOW COMMENT #2 : FINAL FLOW-STRONG BLOW-GAS TO SURFACE IMMEDIATELY
BLOW COMMENT #3 : SEE ATTACHED FLOW CHART.
BLOW COMMENT #4 :

RECOVERED : 360 FT OF: MUD

Total Barrels Fluid = 2.30
Total Fluid Prod Rate = 44.13 BFPD
Indicated Wtr Rate = 4.41 BWPD

REMARK 1 :
REMARK 2 : SLID TOOL 10 FEET TO BOTTOM.
REMARK 3 :
REMARK 4 :

SET PACKER(S) : 12:25 PM TIME STARTED OFF BOTTOM : 4:10 PM
WELL TEMPERATURE : 127
INITIAL HYDROSTATIC PRESSURE (A) 2368
INITIAL FLOW PERIOD MIN: 15 (B) 186 PSI TO (C) : 170
INITIAL CLOSED IN PERIOD MIN: 30 (D) 1603
FINAL FLOW PERIOD MIN: 50 (E) 187 PSI TO (F) : 180
FINAL CLOSED IN PERIOD MIN: 120 (G) 1572
FINAL HYDROSTATIC PRESSURE (H) 2300

WESTERN TESTING CO. INC.
WICHITA - KANSAS

Pressure Transient Report

COMPANY : PETROLEUM INC.
RIG : KIOWA-KANSAS
FIELD : VIEUX
WELL : G-1
DATE : 10-6-87
GAUGE NO : 4376

OPERATIONAL COMMENTS

SLID TOOL 10 FEET TO BOTTOM.

COMPANY : PETROLEUM INC.
 WELL : G-1
 GAUGE # : 4376
 DATE : 6/10/87

FIELD : VIEUX
 JOB # : 13419
 DEPTH : 4840
 TEST :

DATA No.	REAL TIME HR:MN:SS	ELAPSE TIME DELTA HOURS	PRESSURE PSIG	TEMP DEG F	DELTA P Pi-P(i-1)
1	12:25:00	0.000	186.000	127.00	0.000
2	12:29:59	0.083	164.000	127.00	-22.000
3	12:35:00	0.167	168.000	127.00	4.000
4	12:40:00	0.250	170.000	127.00	2.000
5	12:43:00	0.300	514.000	127.00	344.000
6	12:46:00	0.350	853.000	127.00	339.000
7	12:49:00	0.400	1198.000	127.00	345.000
8	12:52:00	0.450	1419.000	127.00	221.000
9	12:55:00	0.500	1524.000	127.00	105.000
10	12:58:00	0.550	1565.000	127.00	41.000
11	13:01:00	0.600	1581.000	127.00	16.000
12	13:04:00	0.650	1591.000	127.00	10.000
13	13:07:00	0.700	1597.000	127.00	6.000
14	13:10:00	0.750	1603.000	127.00	6.000
15	13:11:00	0.767	187.000	127.00	-1416.000
16	13:14:59	0.833	183.000	127.00	-4.000
17	13:20:00	0.917	177.000	127.00	-6.000
18	13:25:00	1.000	177.000	127.00	0.000
19	13:29:59	1.083	178.000	127.00	1.000
20	13:35:00	1.167	179.000	127.00	1.000
21	13:40:00	1.250	181.000	127.00	2.000
22	13:44:59	1.333	182.000	127.00	1.000
23	13:50:00	1.417	181.000	127.00	-1.000
24	13:55:00	1.500	181.000	127.00	0.000
25	13:59:59	1.583	180.000	127.00	-1.000
26	14:02:59	1.633	402.000	127.00	222.000
27	14:05:59	1.683	726.000	127.00	324.000
28	14:08:59	1.733	1032.000	127.00	306.000
29	14:11:59	1.783	1265.000	127.00	233.000
30	14:14:59	1.833	1407.000	127.00	142.000
31	14:17:59	1.883	1419.000	127.00	12.000
32	14:20:59	1.933	1498.000	127.00	79.000
33	14:23:59	1.983	1516.000	127.00	18.000
34	14:26:59	2.033	1526.000	127.00	10.000
35	14:29:59	2.083	1532.000	127.00	6.000
36	14:32:59	2.133	1538.000	127.00	6.000
37	14:35:59	2.183	1542.000	127.00	4.000
38	14:38:59	2.233	1546.000	127.00	4.000
39	14:41:59	2.283	1547.000	127.00	1.000
40	14:44:59	2.333	1549.000	127.00	2.000
41	14:47:59	2.383	1547.000	127.00	-2.000
42	14:50:59	2.433	1547.000	127.00	0.000
43	14:53:59	2.483	1549.000	127.00	2.000
44	14:56:59	2.533	1551.000	127.00	2.000
45	14:59:59	2.583	1553.000	127.00	2.000
46	15:02:59	2.633	1555.000	127.00	2.000
47	15:05:59	2.683	1557.000	127.00	2.000
48	15:08:59	2.733	1560.000	127.00	3.000
49	15:11:59	2.783	1562.000	127.00	2.000
50	15:14:59	2.833	1562.000	127.00	0.000
51	15:17:59	2.883	1563.000	127.00	1.000
52	15:20:59	2.933	1563.000	127.00	0.000

COMPANY : PETROLEUM INC.
WELL : G-1
GAUGE # : 4376
DATE : 6/10/87

FIELD : VIEUX
JOB # : 13419
DEPTH : 4840
TEST :

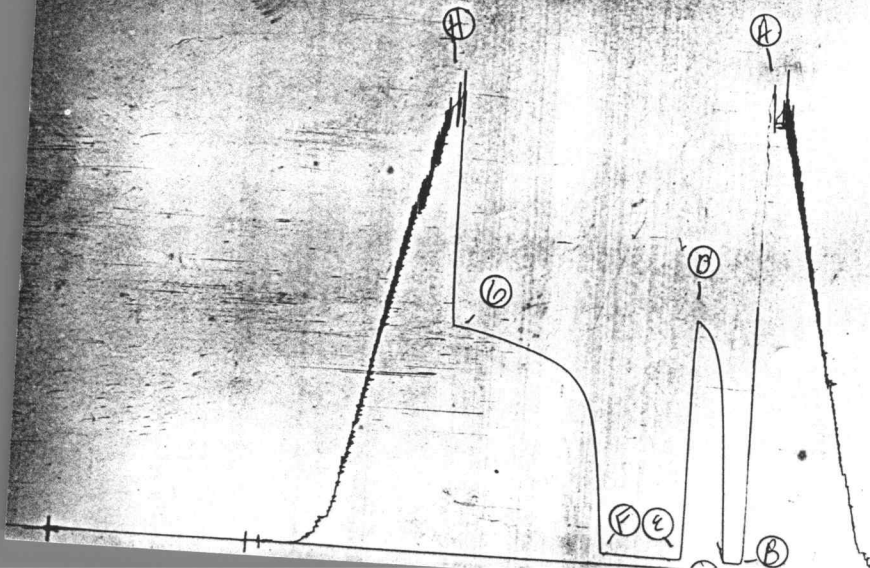
DATA No.	REAL TIME HR:MN:SS	ELAPSE TIME DELTA HOURS	PRESSURE PSIG	TEMP DEG F	DELTA P Pi-P(i-1)
53	15:23:59	2.983	1564.000	127.00	1.000
54	15:26:59	3.033	1564.000	127.00	0.000
55	15:29:59	3.083	1564.000	127.00	0.000
56	15:32:59	3.133	1565.000	127.00	1.000
57	15:35:59	3.183	1565.000	127.00	0.000
58	15:38:59	3.233	1566.000	127.00	1.000
59	15:41:59	3.283	1566.000	127.00	0.000
60	15:44:59	3.333	1567.000	127.00	1.000
61	15:47:59	3.383	1568.000	127.00	1.000
62	15:50:59	3.433	1569.000	127.00	1.000
63	15:53:59	3.483	1570.000	127.00	1.000
64	15:56:59	3.533	1571.000	127.00	1.000
65	15:59:59	3.583	1572.000	127.00	1.000

WESTERN TESTING CO. INC.

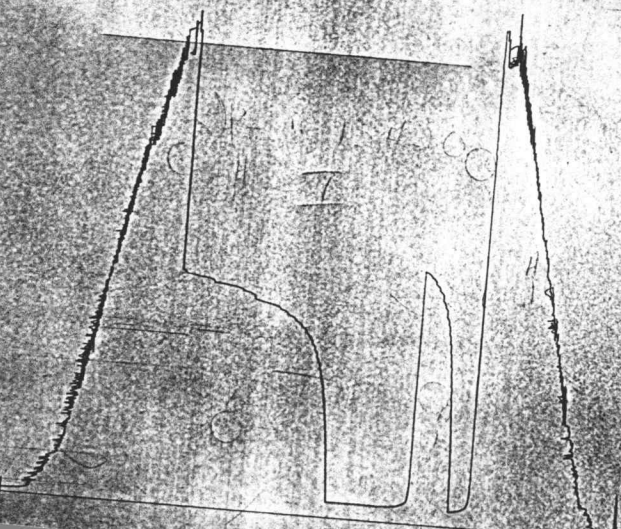
JK # 13420

7

I

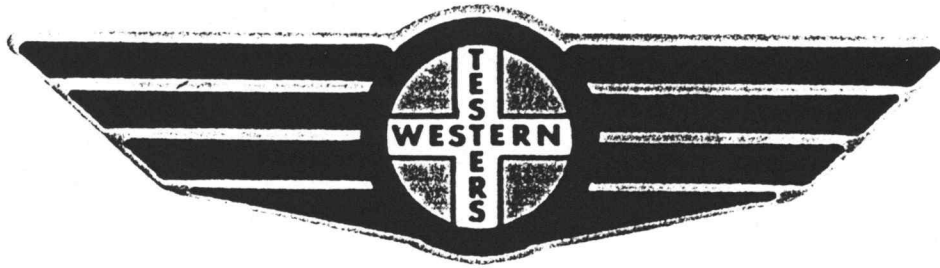


Kit # 13420



13420

FORMATION TEST REPORT



Home Office:

Wichita, Kansas 67201

P.O. Box 1599

Phone (316) 262-5861

COMPANY PETROLEUM, INC. LEASE & WELL NO. VIEWUX G-1 SEC. 3 TWP. 23S RGE. 19W TEST NO. 3 DATE 10/7/87

WESTERN TESTING CO. INC.
SUBSURFACE PRESSURE SURVEY

DATE : 10-7-87 TICKET : 13420
CUSTOMER : PETROLEUM INC. LEASE : VIEUX
WELL : #G-1 TEST: 3 GEOLOGIST : ?
ELEVATION : FORMATION : MISSISSIPPI
SECTION : 3 TOWNSHIP : 23S
RANGE : 19W COUNTY : KIOWA STATE : KANSAS
GAUGE SN# : 4376 RANGE : 4000 CLOCK : 12

INTERVAL FROM : 4876 TO : 4918 TOTAL DEPTH : 4918
DEPTH OF SELECTIVE ZONE :
PACKER DEPTH : 4871 SIZE : 6.63
PACKER DEPTH : 4876 SIZE : 6.63
PACKER DEPTH : SIZE :
PACKER DEPTH : SIZE :

DRILLING CON. : BLUE GOOSE #2
MUD TYPE : CHEMICAL VISCOSITY : 46
WEIGHT : 9.0 WATER LOSS (CC) : 12.4
CHLORIDES (PPM) : 13000
JARS-MAKE : - SERIAL NUMBER : -
DID WELL FLOW ? : - REVERSED OUT ? : -

DRILL COLLAR LENGTH : 302 FT I.D. inch : 2.25
WEIGHT PIPE LENGTH : 0 FT I.D. inch : 0.00
DRILL PIPE LENGTH : 4552 FT I.D. inch : 3.80
TEST TOOL LENGTH : 22 FT TOOL SIZE : 5.50
ANCHOR LENGTH : 42 FT ANCHOR SIZE : 5.50
SURFACE CHOKE SIZE : .75 IN BOTTOM CHOKE SIZE : .75
MAIN HOLE SIZE : 7.875 IN TOOL JOINT SIZE : 4.5 XH

BLOW COMMENT #1 : INITIAL FLOW-STRONG BLOW-OFF BOTTOM IN 1 MINUTE.
BLOW COMMENT #2 : FINAL FLOW-STRONG BLOW-GAS TO SURFACE IN 1 MINUTE-
SEE ATTACHED FLOW CHART.
BLOW COMMENT #3 :
BLOW COMMENT #4 :

RECOVERED : 160 FT OF: MUD

Total Barrels Fluid = 0.79
Total Fluid Prod Rate = 15.11 BFPD
Indicated Wtr Rate = 1.51 BWPD

REMARK 1 :
REMARK 2 :
REMARK 3 :
REMARK 4 :

SET PACKER(S) : 7:50 AM
WELL TEMPERATURE : 128

TIME STARTED OFF BOTTOM : 11:35 AM

INITIAL HYDROSTATIC PRESSURE		(A)	2340	
INITIAL FLOW PERIOD	MIN: 15	(B)	46	PSI TO (C) : 46
INITIAL CLOSED IN PERIOD	MIN: 36	(D)	1316	
FINAL FLOW PERIOD	MIN: 60	(E)	49	PSI TO (F) : 58
FINAL CLOSED IN PERIOD	MIN: 120	(G)	1208	
FINAL HYDROSTATIC PRESSURE		(H)	2301	

GAS FLOW REPORT

Date : 10-7-87 Ticket # : 13420
 Customer : PETROLEUM INC. Lease : VIEUX

Well : #G-1 Test : 3 Geologist : ?

Elevation (KB) : - Formation : MISSISSIPPI

Section : 3 Township : 23S

Range : 19W County : KIOWA State : KANSAS

Gauge SN # : 4376 Range : 4000 Clock : 12

TIME GAUGE (MIN)	TESTER TYPE	ORFICE SIZE	PRESSURE (PSI)	FLOW DESCRIPTION
---------------------	-------------	----------------	-------------------	------------------

PRE FLOW

SECOND FLOW

10	MERLA	1/4"	4	18500 CFPD
20			6.5	23900 CFPD
30			7	25000 CFPD
40			7	25000 CFPD
50			7	25000 CFPD
60			7	25000 CFPD

Gas Bottle SN # : 28
 Date Bottle Filled : 10-7-87
 Date to be Invoiced :

WESTERN TESTING CO. INC.
WICHITA - KANSAS

Pressure Transient Report

COMPANY : PETROLEUM INC.
RIG : KIOWA-KANSAS
FIELD : VIEUX
WELL : #G-1
DATE : 10-7-87
GAUGE NO : 4376

OPERATIONAL COMMENTS

COMPANY : PETROLEUM INC.

WELL : #G-1

GAUGE # : 4376

DATE : 7/10/87

FIELD : VIEUX

JOB # : 13420

DEPTH : 4918

TEST :

DATA No.	REAL TIME HR:MN:SS	ELAPSE TIME DELTA HOURS	PRESSURE PSIG	TEMP DEG F	DELTA P $P_i - P(i-1)$
1	7:50:0	0.000	46.000	128.00	0.000
2	7:54:59	0.083	46.000	128.00	0.000
3	8:0:0	0.167	46.000	128.00	0.000
4	8:5:0	0.250	46.000	128.00	0.000
5	8:8:0	0.300	235.000	128.00	189.000
6	8:11:0	0.350	523.000	128.00	288.000
7	8:14:0	0.400	737.000	128.00	214.000
8	8:17:0	0.450	913.000	128.00	176.000
9	8:20:0	0.500	1038.000	128.00	125.000
10	8:23:0	0.550	1122.000	128.00	84.000
11	8:26:0	0.600	1188.000	128.00	66.000
12	8:29:0	0.650	1232.000	128.00	44.000
13	8:32:0	0.700	1265.000	128.00	33.000
14	8:35:0	0.750	1288.000	128.00	23.000
15	8:38:0	0.800	1304.000	128.00	16.000
16	8:41:0	0.850	1316.000	128.00	12.000
17	8:42:0	0.867	49.000	128.00	-1267.000
18	8:45:59	0.933	49.000	128.00	0.000
19	8:51:0	1.017	49.000	128.00	0.000
20	8:56:0	1.100	49.000	128.00	0.000
21	9:0:59	1.183	49.000	128.00	0.000
22	9:6:0	1.267	50.000	128.00	1.000
23	9:11:0	1.350	51.000	128.00	1.000
24	9:15:59	1.433	52.000	128.00	1.000
25	9:21:0	1.517	54.000	128.00	2.000
26	9:26:0	1.600	55.000	128.00	1.000
27	9:30:59	1.683	56.000	128.00	1.000
28	9:36:0	1.767	57.000	128.00	1.000
29	9:41:0	1.850	58.000	128.00	1.000
30	9:44:0	1.900	221.000	128.00	163.000
31	9:47:0	1.950	393.000	128.00	172.000
32	9:50:0	2.000	536.000	128.00	143.000
33	9:53:0	2.050	653.000	128.00	117.000
34	9:56:0	2.100	744.000	128.00	91.000
35	9:59:0	2.150	818.000	128.00	74.000
36	10:2:0	2.200	867.000	128.00	49.000
37	10:5:0	2.250	906.000	128.00	39.000
38	10:8:0	2.300	940.000	128.00	34.000
39	10:11:0	2.350	964.000	128.00	24.000
40	10:14:0	2.400	986.000	128.00	22.000
41	10:17:0	2.450	1004.000	128.00	18.000
42	10:20:0	2.500	1021.000	128.00	17.000
43	10:23:0	2.550	1034.000	128.00	13.000
44	10:26:0	2.600	1048.000	128.00	14.000
45	10:29:0	2.650	1059.000	128.00	11.000
46	10:32:0	2.700	1068.000	128.00	9.000
47	10:35:0	2.750	1078.000	128.00	10.000
48	10:38:0	2.800	1086.000	128.00	8.000
49	10:41:0	2.850	1095.000	128.00	9.000
50	10:44:0	2.900	1101.000	128.00	6.000
51	10:47:0	2.950	1109.000	128.00	8.000
52	10:50:0	3.000	1118.000	128.00	9.000

COMPANY : PETROLEUM INC.

WELL : #G-1

GAUGE # : 4376

DATE : 7/10/87

FIELD : VIEUX

JOB # : 13420

DEPTH : 4918

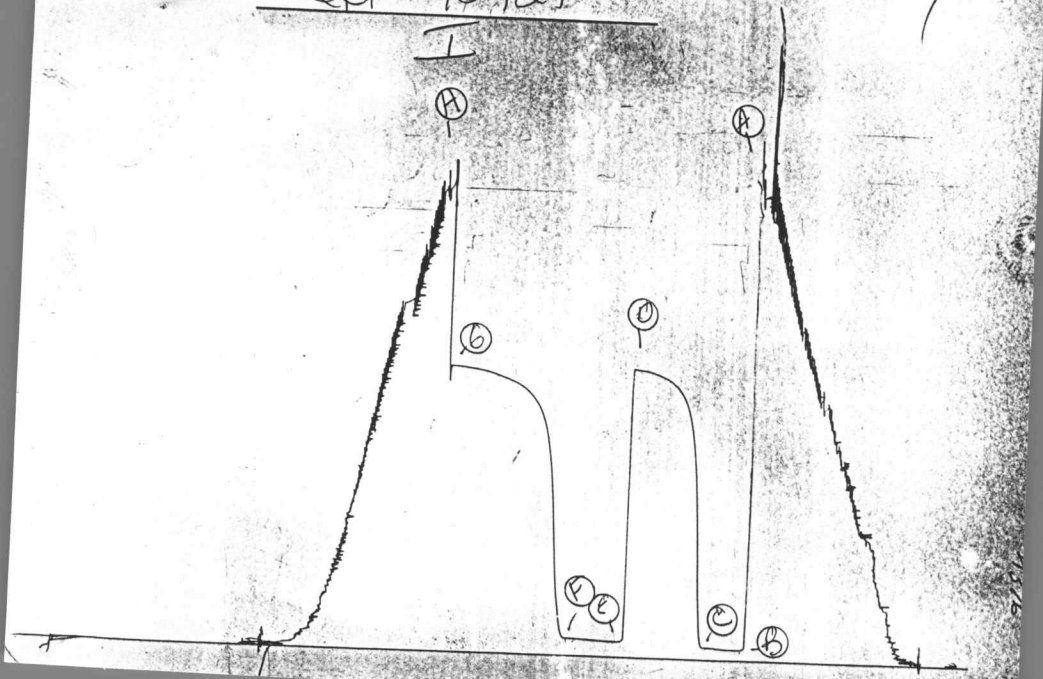
TEST :

DATA No.	REAL TIME HR:MN:SS	ELAPSE TIME DELTA HOURS	PRESSURE PSIG	TEMP DEG F	DELTA P Pi-P(i-1)
53	10:53: 0	3.050	1122.000	128.00	4.000
54	10:56: 0	3.100	1130.000	128.00	8.000
55	10:59: 0	3.150	1138.000	128.00	8.000
56	11: 2: 0	3.200	1146.000	128.00	8.000
57	11: 5: 0	3.250	1152.000	128.00	6.000
58	11: 8: 0	3.300	1158.000	128.00	6.000
59	11:11: 0	3.350	1164.000	128.00	6.000
60	11:14: 0	3.400	1169.000	128.00	5.000
61	11:17: 0	3.450	1174.000	128.00	5.000
62	11:20: 0	3.500	1180.000	128.00	6.000
63	11:23: 0	3.550	1184.000	128.00	4.000
64	11:26: 0	3.600	1189.000	128.00	5.000
65	11:29: 0	3.650	1194.000	128.00	5.000
66	11:32: 0	3.700	1198.000	128.00	4.000
67	11:35: 0	3.750	1202.000	128.00	4.000
68	11:38: 0	3.800	1205.000	128.00	3.000
69	11:41: 0	3.850	1208.000	128.00	3.000

WESTERN TESTING CO. INC.

Plot # 13421

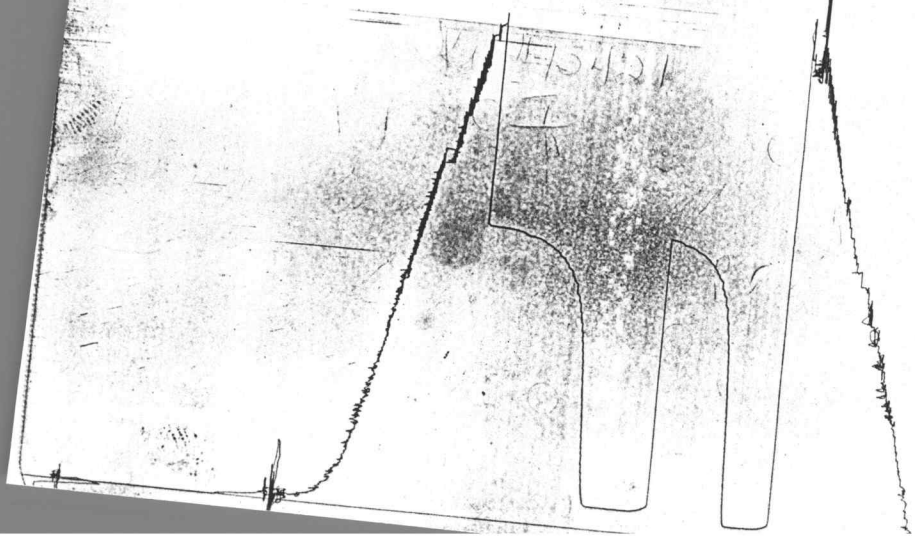
7



Plot # 13421

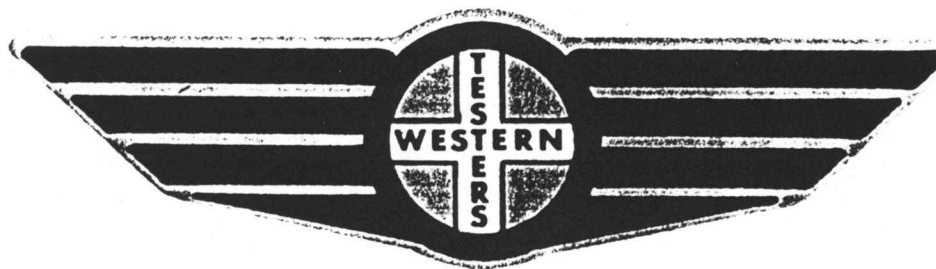


Plot # 13421



13859

FORMATION TEST REPORT



Home Office:

Wichita, Kansas 67201

P.O. Box 1599

Phone (316) 262-5861

COMPANY PETROLEUM, INC. LEASE & WELL NO. VIEWUX G-1 SEC. 3 TWP. 23S RGE. 19W TEST NO. 4 DATE 10/8/87

WESTERN TESTING CO. INC.
SUBSURFACE PRESSURE SURVEY

DATE : 10-8-87 TICKET : 13421
CUSTOMER : PETROLEUM INC. LEASE : VIEUX
WELL : #G-1 TEST: 4 GEOLOGIST : NEWMAN?
ELEVATION : 2261 GL FORMATION : MISSISSIPPI
SECTION : 3 TOWNSHIP : 23S
RANGE : 19W COUNTY : KIOWA STATE : KANSAS
GAUGE SN# : 4376 RANGE : 4000 CLOCK : 12

INTERVAL FROM : 4918 TO : 4950 TOTAL DEPTH : 4950
DEPTH OF SELECTIVE ZONE :
PACKER DEPTH : 4913 SIZE : 6.63
PACKER DEPTH : 4918 SIZE : 6.63
PACKER DEPTH : SIZE :
PACKER DEPTH : SIZE :

DRILLING CON. : BLUE GOOSE RIG #2
MUD TYPE : CHEMICAL VISCOSITY : 43
WEIGHT : 9.3 WATER LOSS (CC) : 12.8
CHLORIDES (PPM) : 14000
JARS-MAKE : - SERIAL NUMBER : -
DID WELL FLOW ? : - REVERSED OUT ? : -

DRILL COLLAR LENGTH : 302 FT I.D. inch : 2.25
WEIGHT PIPE LENGTH : 0 FT I.D. inch : 0.00
DRILL PIPE LENGTH : 4594 FT I.D. inch : 3.80
TEST TOOL LENGTH : 22 FT TOOL SIZE : 5.50
ANCHOR LENGTH : 32 FT ANCHOR SIZE : 5.50
SURFACE CHOKE SIZE : .75 IN BOTTOM CHOKE SIZE : .75
MAIN HOLE SIZE : 7.875 IN TOOL JOINT SIZE : 4.5 XH

BLOW COMMENT #1 : INITIAL FLOW-WEAK BLOW-BUILDING IN 3 1/2".
BLOW COMMENT #2 : FINAL FLOW-WEAK BLOW-BUILDING IN 1/2".
BLOW COMMENT #3 :
BLOW COMMENT #4 :

RECOVERED : 140 FT OF: MUDDY WATER
30% MUD-70% WATER

CHLORIDES: 30000 PPM

Total Barrels Fluid = 0.69
Total Fluid Prod Rate = 13.22 BFPD
Indicated Wtr Rate = 12.27 BWPD

REMARK 1 :
REMARK 2 :
REMARK 3 :
REMARK 4 :

SET PACKER(S) :	5:25 AM	TIME STARTED OFF BOTTOM :	9:10 AM
WELL TEMPERATURE :	129		
INITIAL HYDROSTATIC PRESSURE		(A)	2428
INITIAL FLOW PERIOD MIN:	30	(B)	43 PSI TO (C) : 52
INITIAL CLOSED IN PERIOD MIN:	60	(D)	1512
FINAL FLOW PERIOD MIN:	45	(E)	69 PSI TO (F) : 78
FINAL CLOSED IN PERIOD MIN:	93	(G)	1502
FINAL HYDROSTATIC PRESSURE		(H)	2399

WESTERN TESTING CO. INC.
WICHITA - KANSAS

Pressure Transient Report

COMPANY : PETROLEUM INC.
RIG : KIOWA-KANSAS
FIELD : VIEUX
WELL : #G-1
DATE : 10-8-87
GAUGE NO : 4376

OPERATIONAL COMMENTS

COMPANY : PETROLEUM INC.
 WELL : #G-1
 GAUGE # : 4376
 DATE : 8/10/87

FIELD : VIÉUX
 JOB # : 13421
 DEPTH : 4950
 TEST :

DATA No.	REAL TIME HR:MN:SS	ELAPSE TIME DELTA HOURS	PRESSURE PSIG	TEMP DEG F	DELTA P Pi-P(i-1)
1	5:25:0	0.000	43.000	129.00	0.000
2	5:29:59	0.083	43.000	129.00	0.000
3	5:35:0	0.167	43.000	129.00	0.000
4	5:40:0	0.250	43.000	129.00	0.000
5	5:44:59	0.333	47.000	129.00	4.000
6	5:50:0	0.417	51.000	129.00	4.000
7	5:55:0	0.500	52.000	129.00	1.000
8	5:58:0	0.550	127.000	129.00	75.000
9	6:1:0	0.600	334.000	129.00	207.000
10	6:4:0	0.650	672.000	129.00	338.000
11	6:7:0	0.700	999.000	129.00	327.000
12	6:10:0	0.750	1168.000	129.00	169.000
13	6:13:0	0.800	1273.000	129.00	105.000
14	6:16:0	0.850	1341.000	129.00	68.000
15	6:19:0	0.900	1381.000	129.00	40.000
16	6:22:0	0.950	1413.000	129.00	32.000
17	6:25:0	1.000	1437.000	129.00	24.000
18	6:28:0	1.050	1454.000	129.00	17.000
19	6:31:0	1.100	1466.000	129.00	12.000
20	6:34:0	1.150	1477.000	129.00	11.000
21	6:37:0	1.200	1486.000	129.00	9.000
22	6:40:0	1.250	1492.000	129.00	6.000
23	6:43:0	1.300	1498.000	129.00	6.000
24	6:46:0	1.350	1503.000	129.00	5.000
25	6:49:0	1.400	1506.000	129.00	3.000
26	6:52:0	1.450	1509.000	129.00	3.000
27	6:55:0	1.500	1512.000	129.00	3.000
28	6:56:0	1.517	69.000	129.00	-1443.000
29	6:59:59	1.583	69.000	129.00	0.000
30	7:5:0	1.667	69.000	129.00	0.000
31	7:10:0	1.750	71.000	129.00	2.000
32	7:14:59	1.833	72.000	129.00	1.000
33	7:20:0	1.917	75.000	129.00	3.000
34	7:25:0	2.000	76.000	129.00	1.000
35	7:29:59	2.083	78.000	129.00	2.000
36	7:35:0	2.167	78.000	129.00	0.000
37	7:40:0	2.250	78.000	129.00	0.000
38	7:43:0	2.300	111.000	129.00	33.000
39	7:46:0	2.350	252.000	129.00	141.000
40	7:49:0	2.400	496.000	129.00	244.000
41	7:52:0	2.450	723.000	129.00	227.000
42	7:55:0	2.500	925.000	129.00	202.000
43	7:58:0	2.550	1084.000	129.00	159.000
44	8:1:0	2.600	1205.000	129.00	121.000
45	8:4:0	2.650	1267.000	129.00	62.000
46	8:7:0	2.700	1311.000	129.00	44.000
47	8:10:0	2.750	1342.000	129.00	31.000
48	8:13:0	2.800	1361.000	129.00	19.000
49	8:16:0	2.850	1384.000	129.00	23.000
50	8:19:0	2.900	1400.000	129.00	16.000
51	8:22:0	2.950	1413.000	129.00	13.000
52	8:25:0	3.000	1424.000	129.00	11.000

COMPANY : PETROLEUM INC.
WELL : #G-1
GAUGE # : 4376
DATE : 8/10/87

FIELD : VIEUX
JOB # : 13421
DEPTH : 4950
TEST :

DATA No.	REAL TIME HR:MN:SS	ELAPSE TIME DELTA HOURS	PRESSURE PSIG	TEMP DEG F	DELTA P Pi-P(i-1)
53	8:28: 0	3.050	1434.000	129.00	10.000
54	8:31: 0	3.100	1442.000	129.00	8.000
55	8:34: 0	3.150	1450.000	129.00	8.000
56	8:37: 0	3.200	1457.000	129.00	7.000
57	8:40: 0	3.250	1465.000	129.00	8.000
58	8:43: 0	3.300	1471.000	129.00	6.000
59	8:46: 0	3.350	1478.000	129.00	7.000
60	8:49: 0	3.400	1482.000	129.00	4.000
61	8:52: 0	3.450	1486.000	129.00	4.000
62	8:55: 0	3.500	1489.000	129.00	3.000
63	8:58: 0	3.550	1492.000	129.00	3.000
64	9: 1: 0	3.600	1495.000	129.00	3.000
65	9: 4: 0	3.650	1498.000	129.00	3.000
66	9: 7: 0	3.700	1499.000	129.00	1.000
67	9:10: 0	3.750	1501.000	129.00	2.000
68	9:13: 0	3.800	1502.000	129.00	1.000

WESTERN TESTING CO. INC.