

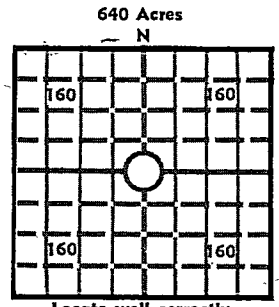
15-093-20385

Geological Survey

WICHITA BRANCH  
KANSAS DRILLERS LOG

API No. 15 — 093 — 20,385  
County Number

S. 11 T. 26 R. 35 W  
Loc. 2310' FWL & 2110' FSL  
County Kearny



Locate well correctly  
Elev.: Gr. 3015  
DF 3018 KB 3020

Operator  
Helmerich & Payne, Inc.

Address  
P. O. Box 558 Garden City, Kansas 67846

Well No. #1B Lease Name Citizens Building & Loan

Footage Location  
2110 feet from (N) (S) line 2310 feet from (E) (W) line

Principal Contractor Gabbert & Jones, Inc. Geologist Joseph Blair

Spud Date 2-22-77 Total Depth 2960' P.B.T.D.

Date Completed 2-28-77 Oil Purchaser NONE

CASING RECORD

Report of all strings set — surface, intermediate, production, etc.

Purpose of string	Size hole drilled	Size casing set (in O.D.)	Weight lbs/ft.	Setting depth	Type cement	Sacks	Type and percent additives
Surface	12 1/4"	8 5/8"	28#	791'	35/65 Pozmix	350	2% CaCl
					Class H	150	3% CaCl
Production	7 7/8"	4 1/2"	10.5#	2960'	35/65 Pozmix	700	6% gel
					50/50 Pozmix	100	2% gel & 10% salt

LINER RECORD

PERFORATION RECORD

Top, ft.	Bottom, ft.	Sacks cement	Shots per ft.	Size & type	Depth interval
					2842 - 46'
TUBING RECORD			2	1/2" Omega	2854 - 67'
					2872 - 79'
Size 2 3/8"	Setting depth 2936'	Packer set at NONE			2902 - 08'

ACID, FRACTURE, SHOT, CEMENT SQUEEZE RECORD

Amount and kind of material used	Depth interval treated
Acidize w/2500 gals 15% HCL + 60 ball sealers	2842 - 2908'
Frac w/2000 gals 15% HCL + 100,000 gals fresh water + 100,000#	2842 - 2908'
16-30 river sand	

INITIAL PRODUCTION

Date of first production 6-15-77 Producing method (flowing, pumping, gas lift, etc.) Pumping (water)

RATE OF PRODUCTION PER 24 HOURS	Oil	Gas	Water	Gas-oil ratio
	bbls.	1819 MCF	4 bbls.	CFPB

Disposition of gas (vented, used on lease or sold) Sold - Colorado Interstate Gas Company Producing interval (s) 2842 - 2908'

INSTRUCTIONS: As provided in KCC Rule 82-2-125, within 90 days after completion of a well, one completed copy of this Drillers Log shall be transmitted to the State Geological Survey of Kansas, 4150 Monroe Street, Wichita, Kansas 67209. Copies of this form are available from the Conservation Division, State Corporation Commission, 3830 So. Meridian (P.O. Box 17027), Wichita, Kansas 66217. Phone AC 316-522-2206. If confidential custody is desired, please note Rule 82-2-125. Drillers Logs will be on open file in the Oil and Gas Division, State Geological Survey of Kansas, Lawrence, Kansas 66044.

Operator Helmerich & Payne, Inc. DESIGNATE TYPE OF COMP.: OIL, GAS, DRY HOLE, SWDW, ETC.:

Well No. 1 Lease Name C B & L "B" Gas

S 11 T 26 R 35 W

**WELL LOG**

Show all important zones of porosity and contents thereof; cored intervals, and all drill-stem tests, including depth interval tested, cushion used, time tool open, flowing and shut-in pressures, and recoveries.

SHOW GEOLOGICAL MARKERS, LOGS RUN, OR OTHER DESCRIPTIVE INFORMATION.

FORMATION DESCRIPTION, CONTENTS, ETC.	TOP	BOTTOM	NAME	DEPTH
Council Grove - limestone, white to buff to tan finely crystalline, fossiliferous fair to good porosity.	2835	2960	Base Stone	
			Corral	1915'
			Herrington	2555'
			Winfield	2614'
			Ft Riley	2676'
			Florence	2779'
			Wreford	2814'
			Council Grove	2835'
			TD	2960'
			Gamma Ray	
Neutron				

USE ADDITIONAL SHEETS, IF NECESSARY, TO COMPLETE WELL RECORD.

Date Received \_\_\_\_\_

Dennis Whiteaker  
Signature

Assistant Chief Production Clerk  
Title

February 1, 1978  
Date