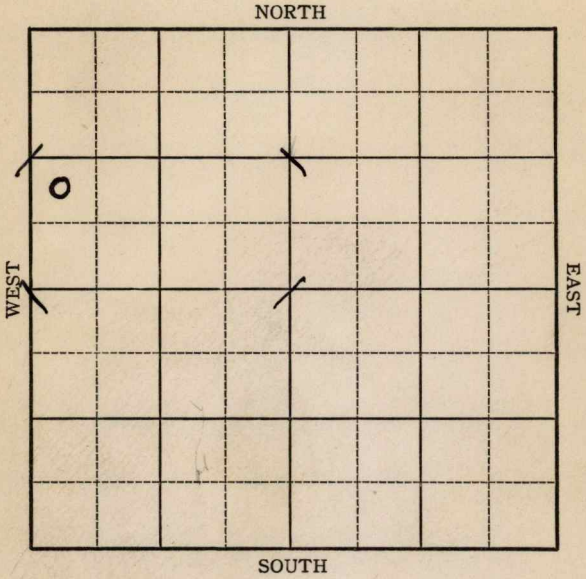


Section 5 Township 18 Range 10-W

Well No. 1 Volkland "B"

Company Skelly Oil



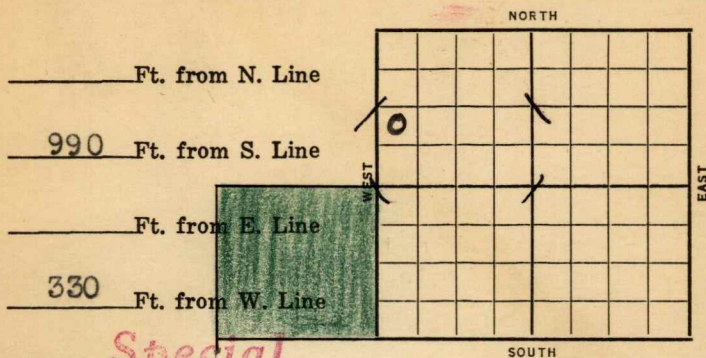
26669

8978  
32673

Sec. 5 Twp. 18 R. 10-W

Well No. #1 Volkland "B" Farm

Skelly Oil Company



**Special**

Date	Elev. 1775	REPORT
1937		
11/10		Cellar.
11/19		10" @ 204'. WOC.
11/27		T.D. 2085 Temporarily shut down account bad weather (Tel)
12/1		Dlg. 2485 (Tel)
12/4		Dlg. 2735 (Tel)
12/6		Dlg. 2905 Will start coring at 2920 (Tel) 2918
12/7		Top Kansas City <del>2923</del> Dlg. 2970 (Tel) Expect pay next 15 to 20 feet Running <sup>6</sup> <del>1</del> foot higher on top K.C. Bridgeport #8 Habiger north offset completed for 3701 bbls. from K.C.
12/8		Cored 2988- <del>3004</del> <sup>3002 1/2</sup> Almost full recovery Oil Pay 2993- <del>3004</del> <sup>3002 1/2</sup> Showed nice well saturated lime Will Rust (Tel) 7" <del>2892</del> 2993
12/10		Top K.C. 2918 <sup>3002 1/2</sup> 7" <del>2892</del> <sup>2993</sup> Oil pay 2993- <del>3004</del> full recovery showed well saturated lime R.U.S.T.

**OVER**

- 12/14--**Top Kansas City 2918** 7" <sup>2993</sup>~~2892~~  
 T.D. 3002 $\frac{1}{2}$  (Corrected)  
 Cored 3002 $\frac{1}{2}$ -06--recovered 3 feet  
 Top foot carried good saturation  
 Bottom 2 feet no saturation  
 T.D. 3006 Hole loaded with water  
 Running tubing to test (Tel)
- 12/15--Swabbing down thru tubing  
 Showing little oil Will swab today and  
 acidize tomorrow (Tel)
- 12/16--Cleaning out Showing little oil No Gas  
 7" casing set at ~~2892~~ 2993  
 May perforate pipe Think pipe set too  
 low Bridgeport wells were drilled with  
 cable tools This well drilled with  
 rotary Rotary may have mudded off  
 gas (Tel)
- 12/17--Swabbing 5 bbls. oil per hour off  
 bottom Small show gas  
 Think pipe shut off oil and gas (Tel)
- 12/17--Yesterday swab 72 bbls. oil in 10 hrs.  
 thru 2 $\frac{1}{2}$ " tubing  
 Today swab 110 bbls. oil in 12 hrs. thru  
 casing Cleaning out (Tel)
- 12/20--Acidized with 6000 gallons  
 Now taking potential  
 1st hour flowed 325 bbls.  
 2nd " " 242 "  
 No estimate gas (Tel)
- 12/20--24 hour potential 3985 bbls.  
 5 M Gas (Tel)

**OVER**

12/21--**Top Kansas City 2918** T.D. 3006  
Potential gauge: (7" 2993)  
1st hour flow 325 bbls.  
2nd " " 242 "  
3rd " " 182 "  
Gas 1st hour 8 Million  
At end of 3rd hour 5 M Gas  
Shut in last hour to build up pressure  
for 2nd 4 hours  
Total 1st 3 hours 749 bbls.  
Following is 2nd 4 hours  
1st hour flow 196 bbls.  
2nd " " 73 "  
3rd " " 152 "  
4th " " 242 "  
Total last 4 hours 664 bbls.  
**24 hour potential 3985 bbls. 5 M Gas**  
Think pipe shut off part gas (Tel)

12/22 7" @ 2993'.  
**K.C. 2918'.**  
T.D. 3006'.  
6000 acid.  
Flowed 749 bbls. 4 hours and  
665 bbls. 4 hours.  
Potential 3986 bbls.  
4,700,000 gas.

**COMPLETED**

12/29--Acidized with 7000 gallons to try to  
increase gas Shut in (Tel)

12/31--Old potential 3986 bbls. 4,700,000 Gas  
Perforated pipe and acidized 7000 gallons  
Think increased production an estimated  
1000 bbls. Will take new potential  
January 3rd (Tel)

1/3/38--1st hour of new potential flowed  
311 bbls. (Tel)

**OVER**

1938

1/3--Top K.C. 2918 F.D. 3006 7" 2893

Acidized 6000 gallons and completed for  
3986 bbls. & 4,700,000 Gas on 12/22/37  
Perforated pipe and reacidized with  
7000 gallons

New potential:

1st hour flowed 311 bbls.

1st 4 hours flowed 831 bbls.

2nd 4 " " 667 "

24 hour potential 4005 bbls. (Tel)

Rice

KANSAS

Map No. 55 Sec. 5 Twp. 18 R. 10W

Well No. 1 Volkland "B"

Skelly Oil Company

Contractor

COMPLETED

SECTION PLAT

NW SW NW

\_\_\_\_\_ Ft. from N. Line

990 Ft. from S. Line

\_\_\_\_\_ Ft. from E. Line

330 Ft. from W. Line

0			

Location \_\_\_\_\_

Rig up \_\_\_\_\_

Drilling and Remarks:

*6000 acid  
flowed 749/4  
665/4  
Pot - 3986  
4,700,000 gals*

RECORD

Cased 7 in., 2993 ft.

Sand K.C. 2918

Gas \_\_\_\_\_

Oil \_\_\_\_\_

Total Depth 3006

PRODUCTION

1st 24 hrs. Nat. \_\_\_\_\_

1st 24 hrs. after shot \_\_\_\_\_

Gas \_\_\_\_\_ Cu. Ft.

Dry Hole \_\_\_\_\_

Abandoned \_\_\_\_\_

Date

H. D. Hatfield

DEC 22 1937 19

Scout

KANSAS

Rice

Map No. \_\_\_\_\_ Sec. 5 Twp. 18 R. 10W

Well No. 1 Volkland "B"

Skelly Oil Company

Contractor \_\_\_\_\_

FIRST REPORT

SECTION PLAT

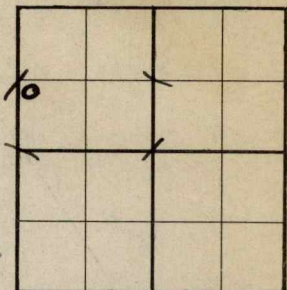
NW SW NW

\_\_\_\_\_ Ft. from N. Line

990 Ft. from S. Line

\_\_\_\_\_ Ft. from E. Line

330 Ft. from W. Line



Special

Location \_\_\_\_\_

Rig up \_\_\_\_\_

Drilling and Remarks:

**Cellar**

RECORD

Cased \_\_\_\_\_ in., \_\_\_\_\_ ft.

Sand \_\_\_\_\_

Gas \_\_\_\_\_

Oil \_\_\_\_\_

Total Depth \_\_\_\_\_

PRODUCTION

1st 24 hrs. Nat. \_\_\_\_\_

1st 24 hrs. after shot \_\_\_\_\_

Gas \_\_\_\_\_ Cu. Ft.

Dry Hole \_\_\_\_\_

Abandoned \_\_\_\_\_

Date

NOV 10 1937 19

H. D. Hatfield Scout