

TRILOBITE TESTING L.L.C.

OPERATOR : Murfin Drlg. Co.

DATE 10-8-99

WELL NAME: William Unit #2-32

KB 3679.00 ft

TICKET NO: 11975 DST #1

LOCATION : 32-2S-41W Cheyenne KS.

GR 3674.00 ft

FORMATION: Lansing "A"

INTERVAL : 4480.00 To 4555.00 ft

TD 4555.00 ft

TEST TYPE: CONVENTIONAL

RECORDER DATA

Mins		Field	1	2	3	4	TIME DATA-----
PF 30	Rec.	13339	13339	3024			PF Fr. 0930 to 1000 hr
SI 45	Range (Psi)	4025.0	4025.0	4995.0	0.0	0.0	IS Fr. 1000 to 1045 hr
SF 60	Clock (hrs)	12 HR	12	ALP			SF Fr. 1045 to 1145 hr
FS 90	Depth (ft)	4550.0	4550.0	4485.0	0.0	0.0	FS Fr. 1145 to 1315 hr

	Field	1	2	3	4	
A. Init Hydro	2323.0	2347.0	2223.0	0.0	0.0	T STARTED 0745 hr
B. First Flow	83.0	129.0	23.0	0.0	0.0	T ON BOTM 0928 hr
B1. Final Flow	83.0	129.0	50.0	0.0	0.0	T OPEN 0930 hr
C. In Shut-in	1401.0	1414.0	1414.0	0.0	0.0	T PULLED 1315 hr
D. Init Flow	104.0	158.0	55.0	0.0	0.0	T OUT 1515 hr
E. Final Flow	104.0	158.0	98.0	0.0	0.0	
F. Fl Shut-in	1391.0	1401.0	1395.0	0.0	0.0	TOOL DATA-----
G. Final Hydro	2273.0	2261.0	2215.0	0.0	0.0	Tool Wt. 1800.00 lbs
Inside/Outside	O	O	I			Wt Set On Packer 30000.00 lbs
						Wt Pulled Loose 70000.00 lbs
						Initial Str Wt 65000.00 lbs
						Unseated Str Wt 65000.00 lbs
						Bot Choke 0.75 in
						Hole Size 8.88 in
						D Col. ID 2.25 in
						D. Pipe ID 3.80 in
						D.C. Length 506.00 ft
						D.P. Length 3979.00 ft

RECOVERY

Tot Fluid 130.00 ft of 130.00 ft in DC and 0.00 ft in DP
 130.00 ft of Drilling mud
 0.00 ft of
 0.00 ft of
 0.00 ft of
 0.00 ft of
 0.00 ft of
 0.00 ft of
 0.00 ft of

SALINITY 0.00 P.P.M. A.P.I. Gravity 0.00

BLOW DESCRIPTION

Initial Flow:
 Weak surface blow built to 1/4"
 Final Flow:
 Surface return steady throughout

SAMPLES:

SENT TO:

MUD DATA-----

Mud Type	Chemical
Weight	9.00 lb/cf
Vis.	51.00 S/L
W.L.	7.60 in3
F.C.	0.00 in
Mud Drop N	

Amt. of fill	0.00 ft
Btm. H. Temp.	139.00 F
Hole Condition	Good
% Porosity	0.00
Packer Size	6.75 in
No. of Packers	2
Cushion Amt.	0.00
Cushion Type	
Reversed Out N	
Tool Chased N	
Tester	Rod Steinbrink
Co. Rep.	Roger Welty
Contr.	Murfin
Rig #	3
Unit #	
Pump T.	

Test Successful: Y

*** TOOL DIAGRAM *** CONVENTIONAL

WELL NAME: William Unit #2-32

LOCATION : 32-2S-41W Cheyenne KS.

WELL No. 11975 D.S.T. No. 1 DATE 10-8-99

TOTAL TOOL TO BOTTOM OF TOP PACKERS 27

INTERVAL TOOL 13

TOTAL PACKERS AND ANCHOR

TOTAL TOOL 40

DRILL COLLAR ANCHOR IN INTERVAL

C. ANCHOR STANDS Single Total

P. ANCHOR STANDS 1 Single Total 61

TOTAL ASSEMBLY 101

C. ABOVE TOOLS STANDS 8 Single 1 Total 506

P. ABOVE TOOLS STANDS 63 Single Total 3979

TOTAL DRILL COLLARS DRILL PIPE & TOOLS .. 4586

TOTAL DEPTH 4555

TOTAL DRILL PIPE ABOVE K.B. 31

REMARKS:

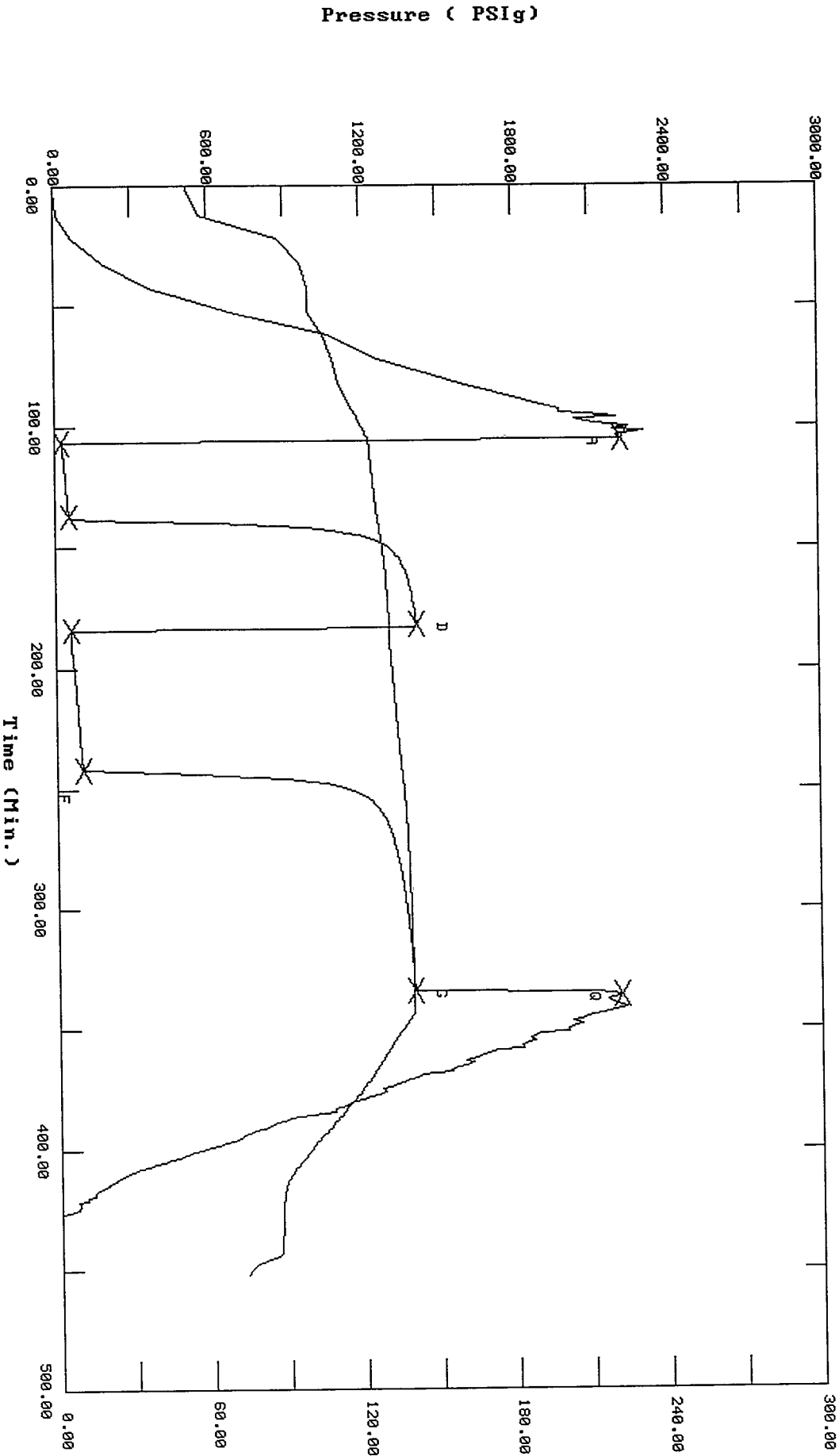
P.O. SUB 1' Above 120' DC	4333
C.O. SUB 1'	4453
S.I. TOOL 5'	4459
HMV 5'	4464
JARS 5'	4469
SAFETY JOINT 2'	4471
PACKER 4'	4475
PACKER 5'	4480
DEPTH STUBB 1'	4481
ANCHOR	
ALP Rec. @	4485
6' Perf	4487
1' c/o sub	4488
61' DP	4549
1' c/o sub	4545
T.C. DEPTH	
AK-1 Rec. @	4550
BULLNOSE 5'	
T.D.	4555

11975 DST #1 William Unit #2-32 Murfin Dr. Ig. Co.

TEST HISTORY

Flag Points
<Min.> P< PSig>

A:	0.00	2229.97
B:	0.00	23.34
C:	31.00	50.47
D:	45.00	1414.05
E:	0.00	55.02
F:	58.00	98.28
G:	92.00	1395.76
H:	0.00	2215.72

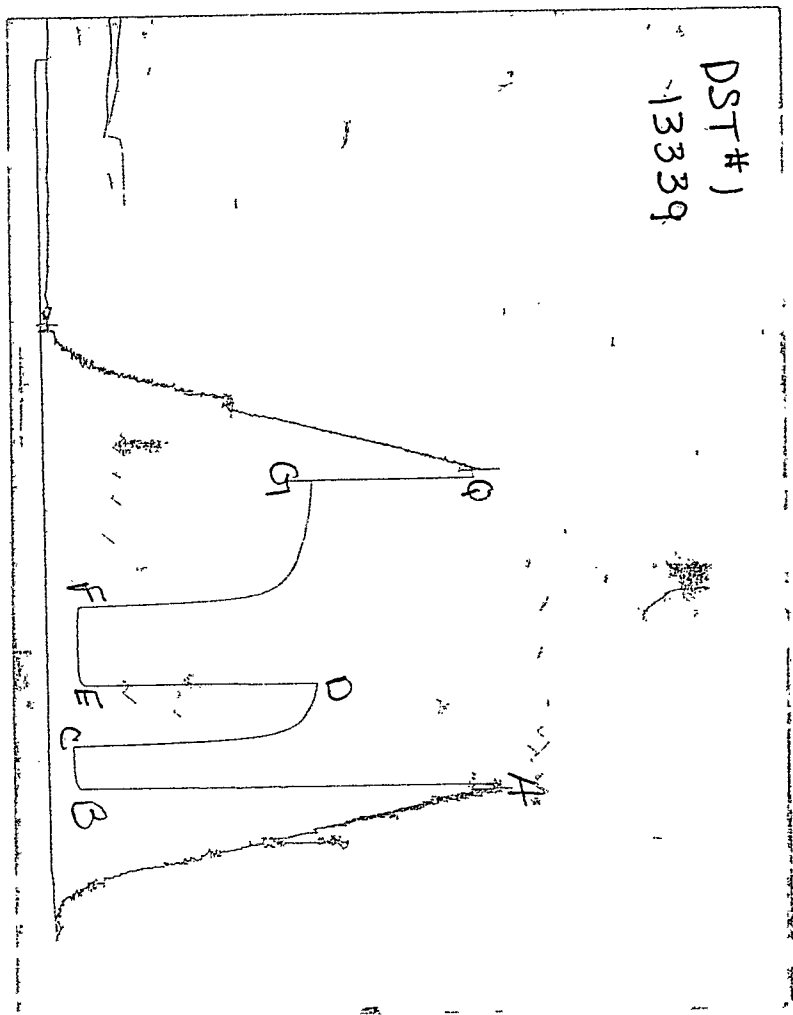


Temperature (DEG F)

Pressure (PSig)

Time (Min.)

CHART PAGE



This is a photocopy of the actual AK-1 recorder chart

TRILOBITE TESTING L.L.C.

OPERATOR : Murfin Drlg.Co. DATE 10-9-99
 WELL NAME: William Unit #2-32 KB 3679.00 ft TICKET NO: 11976 DST #2
 LOCATION : 32-2S-41W Cheyenne KS. GR 3674.00 ft FORMATION: Lans/KC "B"
 INTERVAL : 4566.00 To 4620.00 ft TD 4620.00 ft TEST TYPE: CONVENTIONAL

RECORDER DATA

Mins		Field	1	2	3	4	TIME DATA-----
PF 30	Rec.	13339	13339	3024			PF Fr. 0320 to 0350 hr
SI 45	Range(Psi)	4025.0	40253.0	4995.0	0.0	0.0	IS Fr. 0350 to 0435 hr
SF 45	Clock(hrs)	12 HR	12	ALP			SF Fr. 0435 to 0520 hr
FS 60	Depth(ft)	4615.0	4315.0	4570.0	0.0	0.0	FS Fr. 0520 to 0620 hr

	Field	1	2	3	4	
A. Init Hydro	2323.0	2341.0	2273.0	0.0	0.0	T STARTED 0115 hr
B. First Flow	41.0	63.0	22.0	0.0	0.0	T ON BOTM 0318 hr
B1. Final Flow	41.0	63.0	99.0	0.0	0.0	T OPEN 0320 hr
C. In Shut-in	1190.0	1204.0	1261.0	0.0	0.0	T PULLED 0620 hr
D. Init Flow	124.0	145.0	112.0	0.0	0.0	T OUT 0930 hr
E. Final Flow	145.0	163.0	196.0	0.0	0.0	
F. Fl Shut-in	1180.0	1188.0	1243.0	0.0	0.0	TOOL DATA-----
G. Final Hydro	2263.0	2276.0	2266.0	0.0	0.0	Tool Wt. 1800.00 lbs
Inside/Outside	0	0	I			Wt Set On Packer 30000.00 lbs
						Wt Pulled Loose 70000.00 lbs
						Initial Str Wt 65000.00 lbs
						Unseated Str Wt 68000.00 lbs
						Bot Choke 0.75 in
						Hole Size 8.88 in
						D Col. ID 2.25 in
						D. Pipe ID 3.80 in
						D.C. Length 506.00 ft
						D.P. Length 4038.00 ft

RECOVERY

Tot Fluid 430.00 ft of 430.00 ft in DC and 0.00 ft in DP
 260.00 ft of Gas in pipe
 390.00 ft of Free Oil 10%gas 90%oil
 40.00 ft of Slight gas oil cut mud 15%gas 10%oil 75%mud
 0.00 ft of
 0.00 ft of
 0.00 ft of
 0.00 ft of
 0.00 ft of
 SALINITY 0.00 P.P.M. A.P.I. Gravity 27.00

MUD DATA-----

Mud Type	Chemical
Weight	9.00 lb/cf
Vis.	59.00 S/L
W.L.	6.80 in3
F.C.	0.00 in
Mud Drop N	

BLOW DESCRIPTION

Initial Flow:
 Surface blow built to bottom in 23 mins.
 Initial Shut-in:
 Weak return blow built to 2"
 Final Flow:
 Weak to fair blow built to bottom in 27 mins.
 Final Shut-in:
 Weak return steady throughout

Amt. of fill	0.00 ft
Btm. H. Temp.	142.00 F
Hole Condition	Good
% Porosity	0.00
Packer Size	6.75 in
No. of Packers	2
Cushion Amt.	0.00
Cushion Type	
Reversed Out N	
Tool Chased N	
Tester	Rod Steinbrink
Co. Rep.	Roger Welty
Contr.	Murfin
Rig #	3
Unit #	
Pump T.	

SAMPLES:
 SENT TO:

Test Successful: Y

*** TOOL DIAGRAM *** CONVENTIONAL

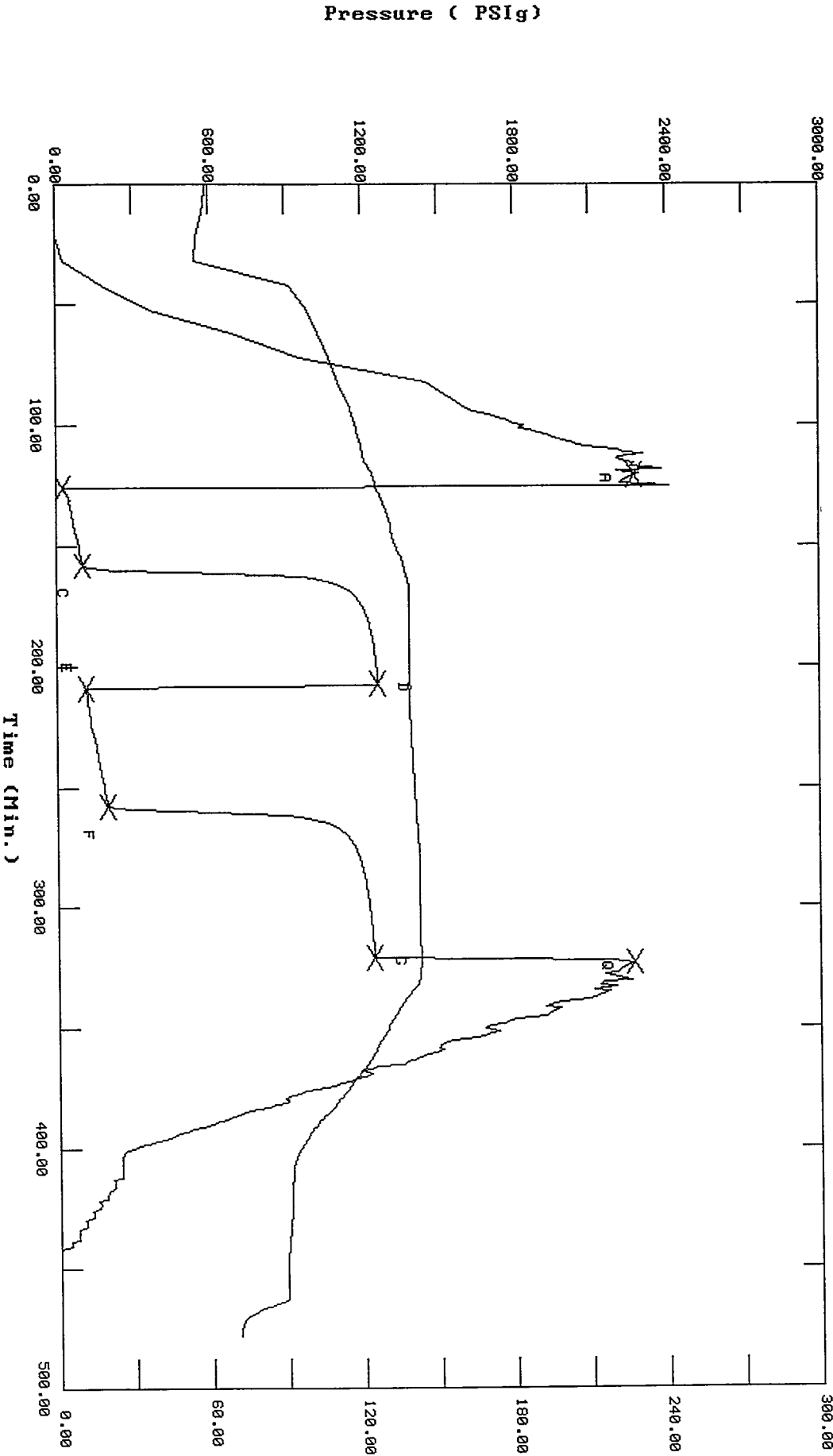
WELL NAME: William Unit #2-32	P.O. SUB 1' Above 120' DC	4419
	C.O. SUB 1'	4539
LOCATION : 32-2S-41W Cheyenne KS.	S.I. TOOL 5'	4545
WELLCKET No. 11976 D.S.T. No. 2 DATE 10-9-99		
TOTAL TOOL TO BOTTOM OF TOP PACKERS 27	HMV 5'	4550
INTERVAL TOOL 23		
BOTTOM PACKERS AND ANCHOR	JARS 5'	4555
TOTAL TOOL 50		
WILL COLLAR ANCHOR IN INTERVAL		
C. ANCHOR STND.Stands Single Total	SAFETY JOINT 2'	4557
P. ANCHOR STND.Stands Single 1 Total 31	PACKER 4'	4561
TOTAL ASSEMBLY 81	PACKER 5'	4566
C. ABOVE TOOLS.Stands8 Single 1 Total 506	DEPTH	
P. ABOVE TOOLS.Stands65 Single Total 4038	STUBB 1'	4567
TOTAL DRILL COLLARS DRILL PIPE & TOOLS .. 5625	ANCHOR	
	ALP Rec. @	4570
TOTAL DEPTH 5620	15' Perf	4582
TOTAL DRILL PIPE ABOVE K.B. 5	1' c/o sub	4583
MARKS:	31' DP	4614
	1' c/o sub	4615
	T.C.	
	DEPTH	
	AK-1 Rec. @	4615
	BULLNOSE 5'	
	T.D.	4620

11976 DST #2 William Unit #2-32 Murfin Drilg Co.

TEST HISTORY

Flag Points

t(Min.)	Pk	PSI(g)
A: 0.00		2273.68
B: 0.00		22.13
C: 32.00		99.26
D: 49.00		1261.78
E: 0.00		112.48
F: 49.00		196.21
G: 63.00		1243.27
H: 0.00		2266.49



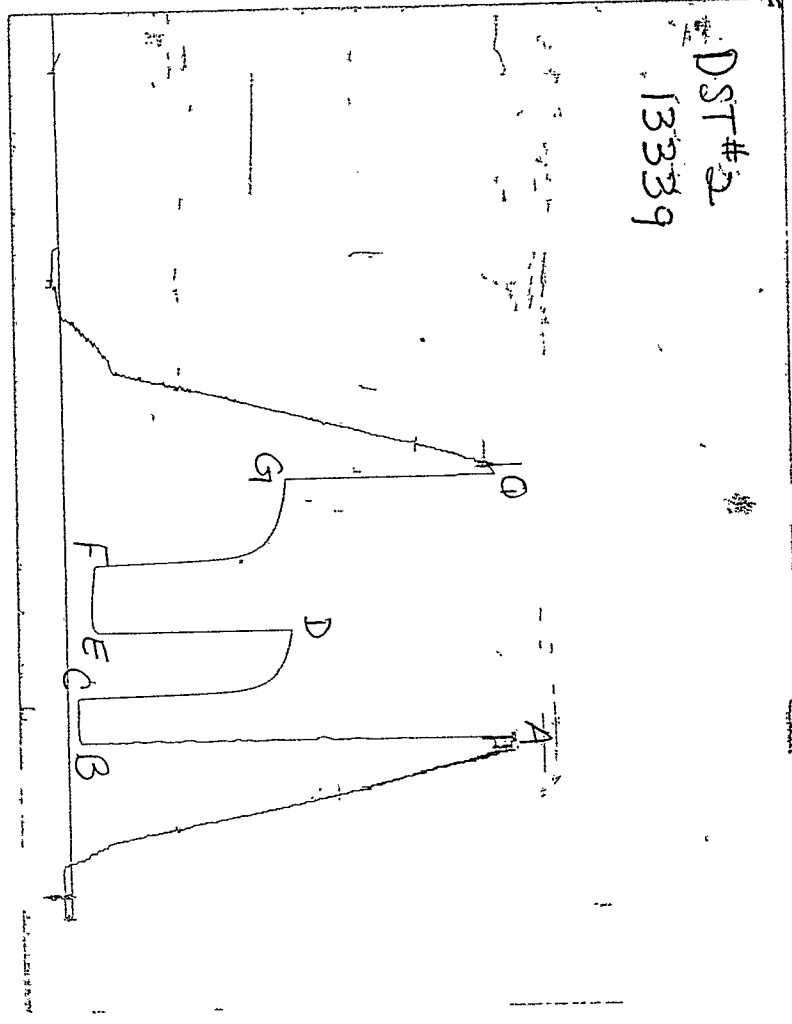
Temperature (DEG F)

Pressure (PSIg)

Time (Min.)

CHART PAGE

DST# 2
13339



This is a photocopy of the actual AK-1 recorder chart

TRILOBITE TESTING L.L.C.

OPERATOR : Murfin Drlg Co.
 WELL NAME: William Unit #2-32
 LOCATION : 32-2S-41W Cheyenne KS.
 INTERVAL : 4626.00 To 4675.00 ft

DATE 10-9-99
 KB 3679.00 ft TICKET NO: 11977 DST #3
 GR 3674.00 ft FORMATION: Lans/KC "C"
 TD 4675.00 ft TEST TYPE: CONVENTIONAL

RECORDER DATA

Mins	Field	1	2	3	4	TIME DATA-----
PF 30 Rec.	13339		3024			PF Fr. 2135 to 2205 hr
SI 45 Range (Psi)	4025.0	0.0	4995.0	0.0	0.0	IS Fr. 2205 to 2250 hr
SF 30 Clock (hrs)	12 HR		ALP			SF Fr. 2250 to 2320 hr
FS 45 Depth (ft)	4670.0	0.0	4630.0	0.0	0.0	FS Fr. 2320 to 0010 hr

	Field	1	2	3	4	
A. Init Hydro	0.0	0.0	2396.0	0.0	0.0	T STARTED 1945 hr
B. First Flow	0.0	0.0	25.0	0.0	0.0	T ON BOTM 2133 hr
B1. Final Flow	0.0	0.0	28.0	0.0	0.0	T OPEN 2135 hr
C. In Shut-in	0.0	0.0	51.0	0.0	0.0	T PULLED 0010 hr
D. Init Flow	0.0	0.0	27.0	0.0	0.0	T OUT 0300 hr
E. Final Flow	0.0	0.0	28.0	0.0	0.0	
F. Fl Shut-in	0.0	0.0	41.0	0.0	0.0	TOOL DATA-----
G. Final Hydro	0.0	0.0	2312.0	0.0	0.0	Tool Wt. 1800.00 lbs
Inside/Outside	0		I			Wt Set On Packer 30000.00 lbs
						Wt Pulled Loose 80000.00 lbs
						Initial Str Wt 65000.00 lbs
						Unseated Str Wt 65000.00 lbs
						Bot Choke 0.75 in
						Hole Size 8.88 in
						D Col. ID 2.25 in
						D. Pipe ID 3.80 in
						D.C. Length 506.00 ft
						D.P. Length 4101.00 ft

RECOVERY

Tot Fluid 5.00 ft of 5.00 ft in DC and 0.00 ft in DP
 5.00 ft of Slightly Oil Spotted Mud
 0.00 ft of
 0.00 ft of
 0.00 ft of
 0.00 ft of
 0.00 ft of
 0.00 ft of
 0.00 ft of
 0.00 ft of

TOOL DATA-----
 Tool Wt. 1800.00 lbs
 Wt Set On Packer 30000.00 lbs
 Wt Pulled Loose 80000.00 lbs
 Initial Str Wt 65000.00 lbs
 Unseated Str Wt 65000.00 lbs
 Bot Choke 0.75 in
 Hole Size 8.88 in
 D Col. ID 2.25 in
 D. Pipe ID 3.80 in
 D.C. Length 506.00 ft
 D.P. Length 4101.00 ft

SALINITY 0.00 P.P.M. A.P.I. Gravity 0.00

MUD DATA-----

Mud Type Chemical
 Weight 9.10 lb/cf
 Vis. 60.00 S/L
 W.L. 6.80 in3
 F.C. 0.00 in
 Mud Drop N

BLOW DESCRIPTION

Initial Flow:
 Weak surface blow built to 1/2"
 Final Flow:
 No return blow

Amt. of fill 0.00 ft
 Btm. H. Temp. 134.00 F
 Hole Condition Good
 % Porosity 0.00
 Packer Size 6.75 in
 No. of Packers 2
 Cushion Amt. 0.00

SAMPLES:
 SENT TO:

Cushion Type
 Reversed Out N
 Tool Chased N
 Tester Rod Steinbrink
 Co. Rep. Roger Welty
 Contr. Murfin
 Rig # 3
 Unit #
 Pump T.

Test Successful: Y

*** TOOL DIAGRAM *** CONVENTIONAL

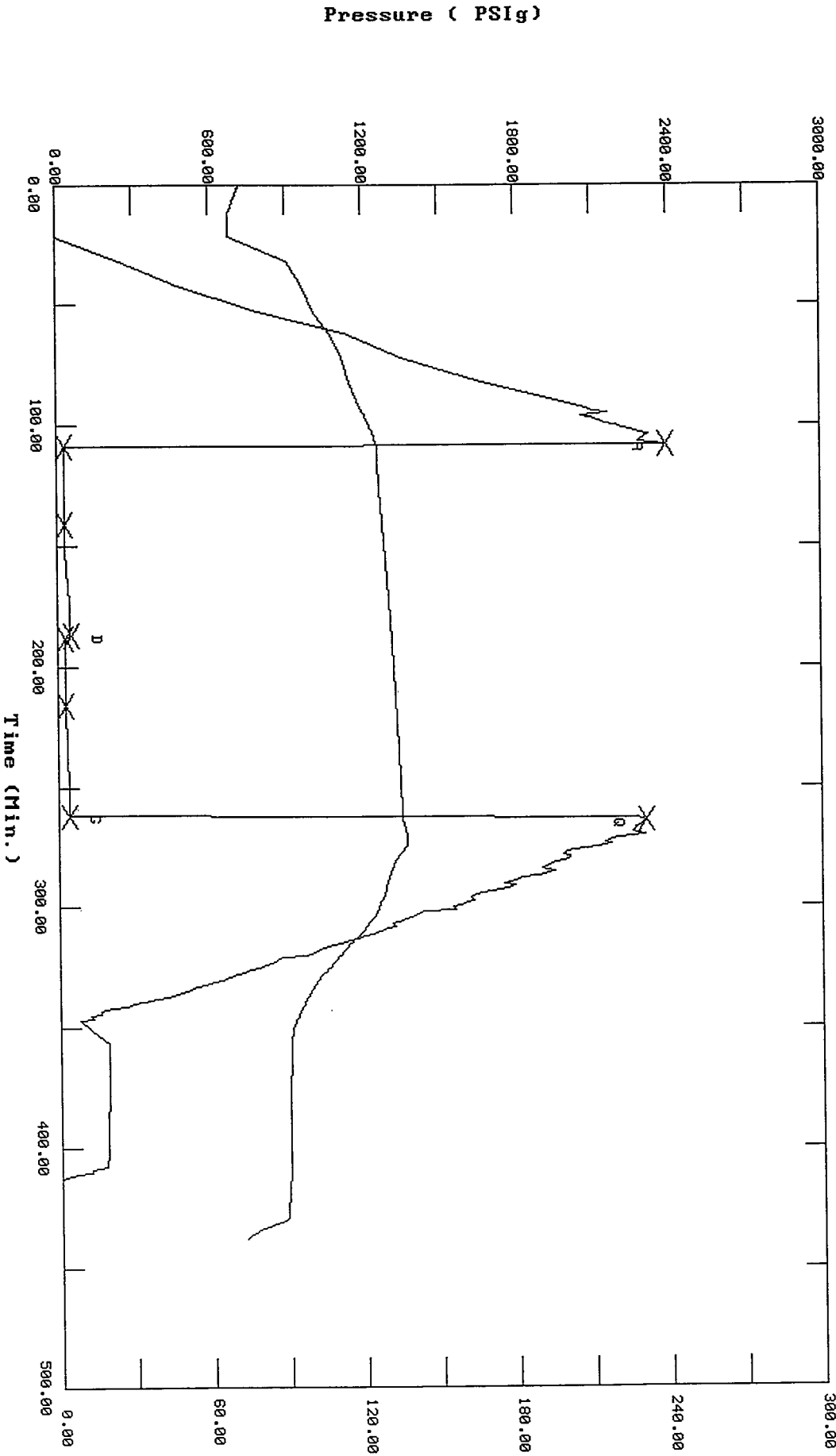
ELL NAME: William Unit #2-32		P.O. SUB 1' Above 120' DC	4479
		C.O. SUB 1'	4599
LOCATION : 32-2S-41W Cheyenne KS.		S.I. TOOL 5'	4605
TICKET No. 11977 D.S.T. No. 3 DATE 10-9-99			
TOTAL TOOL TO BOTTOM OF TOP PACKERS 27		HMV 5'	4610
INTERVAL TOOL 18		JARS 5'	4615
BOTTOM PACKERS AND ANCHOR			
TOTAL TOOL 45			
DRILL COLLAR ANCHOR IN INTERVAL			
C. ANCHOR STND.Stands Single Total		SAFETY JOINT 2'	4617
P. ANCHOR STND.Stands Single 1 Total 31		PACKER 4'	4621
TOTAL ASSEMBLY 76		PACKER 5'	4626
C. ABOVE TOOLS.Stands8 Single 1 Total 506		DEPTH	
P. ABOVE TOOLS.Stands66 Single Total 4101		STUBB 1'	4627
		ANCHOR	
TOTAL DRILL COLLARS DRILL PIPE & TOOLS .. 4683		ALP Rec. @	4630
TOTAL DEPTH 4675		10' Perf	4637
		1' c/o sub	4638
TOTAL DRILL PIPE ABOVE K.B. 8		31' DP	4669
		1' c/o sub	4670
REMARKS:			
		T.C.	
		DEPTH	
		AK-1 Rec. @	4670
		BULLNOSE 5'	
		T.D.	4675

11977 DST #3 William Unit #2-32 Murfin Drilg. Co.

TEST HISTORY

Flag Points

Time (Min.)	Pressure (PSig)
A: 0.00	2396.40
B: 0.00	25.32
C: 32.00	28.56
D: 46.00	51.17
E: 0.00	27.54
F: 28.00	28.30
G: 46.00	41.70
H: 0.00	2312.31



Pressure (PSig)

Temperature (DEG F)

Time (Min.)

TRILOBITE TESTING L.L.C.

P.O. Box 362 • Hays, Kansas 67601

N^o 11977

Test Ticket

Well Name & No.	<u>William Unit #2-32</u>	Test No.	<u>3</u>	Date	<u>10-9-99</u>
Company	<u>Murfin Drilling Company Inc.</u>	Zone Tested	<u>Lans/KC 'C'</u>		
Address	<u>250 N. Water Ste 300 Wichita, KS. 67202</u>	Elevation	<u>3679</u>	KB	<u>3674</u> GL
Co. Rep / Geo.	<u>Roger Welty</u>	Cont.	<u>Murfin #3</u>	Est. Ft. of Pay	<u> </u> Por. <u> </u> %
Location: Sec.	<u>32</u>	Twp.	<u>2^S</u>	Rge.	<u>41^W</u> Co. <u>Wyenne</u> State <u>KS</u>
No. of Copies	<u> </u>	Distribution Sheet (Y, N)	<u> </u>	Turnkey (Y, N)	<u> </u> Evaluation (Y, N) <u> </u>

Interval Tested	<u>4626 - 4675</u>	Initial Str Wt./Lbs.	<u>65,000</u>	Unseated Str Wt./Lbs.	<u>65,000</u>
Anchor Length	<u>49'</u>	Wt. Set Lbs.	<u>30,000</u>	Wt. Pulled Loose/Lbs.	<u>80,000</u>
Top Packer Depth	<u>4621</u>	Tool Weight	<u>1,800</u>		
Bottom Packer Depth	<u>4626</u>	Hole Size — 7 7/8"	<u> </u>	Rubber Size — 6 3/4"	<u> </u>
Total Depth	<u>4675</u>	Wt. Pipe Run	<u> </u>	Drill Collar Run	<u>506' (81)</u>
Mud Wt. <u>9.1</u> LCM <u> </u> Vis. <u>60</u> WL <u>6.8</u>		Drill Pipe Size	<u>4 1/2" XH</u>	Ft. Run	<u>4101' (66)</u>
Blow Description	<u>1F: Weak surface blow built to 1/2"</u>				

FF: No return blow.

Recovery — Total Feet	<u>5'</u>	GIP	<u> </u>	Ft. in DC	<u>5'</u>	Ft. in DP	<u> </u>
Rec.	Feet Of	%gas	%oil	%water	%mud		
Rec.	Feet Of	%gas	%oil	%water	%mud		
Rec.	<u>5'</u> Feet Of	<u>Slightly Oil Spotted</u>		%gas	%oil	%water	%mud
Rec.	Feet Of	<u>Mud</u>		%gas	%oil	%water	%mud
Rec.	Feet Of	%gas	%oil	%water	%mud		
BHT	<u>134°</u>	°F Gravity	<u> </u>	°API D@	<u> </u>	°F Corrected Gravity	<u> </u> °API
RW	@	°F Chlorides	<u> </u>	ppm Recovery	Chlorides	<u>700</u>	ppm System

(A) Initial Hydrostatic Mud	AK-1	Alpine	<u>2396</u>	PSI Recorder No.	<u>13339</u>	T-On Location	<u>1800</u>
(B) First Initial Flow Pressure			<u>25</u>	PSI (depth)	<u>4670</u>	T-Started	<u>1945</u>
(C) First Final Flow Pressure			<u>28</u>	PSI Recorder No.	<u>3024</u>	T-Open	<u>2135</u>
(D) Initial Shut-In Pressure			<u>51</u>	PSI (depth)	<u>4630</u>	T-Pulled	<u>0010</u>
(E) Second Initial Flow Pressure			<u>27</u>	PSI Recorder No.	<u> </u>	T-Out	<u>0300</u>
(F) Second Final Flow Pressure			<u>28</u>	PSI (depth)	<u> </u>	T-Off Location	<u>0345</u>
(G) Final Shut-in Pressure			<u>41</u>	PSI Initial Opening	<u>30</u>	Test	<u>700</u>
(Q) Final Hydrostatic Mud			<u>2312</u>	PSI Initial Shut-in	<u>45</u>	Jars	<u>X 200</u>
				Final Flow	<u>30</u>	Safety Joint	<u>X 50</u>
				Final Shut-in	<u>45</u>	Straddle	<u> </u>

TRILOBITE TESTING L.L.C. SHALL NOT BE LIABLE FOR DAMAGE OF ANY KIND OF THE PROPERTY OR PERSONNEL OF THE ONE FOR WHOM A TEST IS MADE, OR FOR ANY LOSS SUFFERED OR SUSTAINED, DIRECTLY OR INDIRECTLY, THROUGH THE USE OF ITS EQUIPMENT, OR ITS STATEMENTS OR OPINION CONCERNING THE RESULTS OF ANY TEST. TOOLS LOST OR DAMAGED IN THE HOLE SHALL BE PAID FOR AT COST BY THE PARTY FOR WHOM THE TEST IS MADE.

Approved By Roger Welty

Our Representative Rod Steinbrink

Circ. Sub	<u>X</u>	<u>N/C</u>
Sampler	<u> </u>	
Extra Packer	<u> </u>	
Elec. Rec.	<u>X</u>	<u>150</u>
Mileage	<u> </u>	
Other	<u> </u>	
TOTAL PRICE \$	<u>1100</u>	

TRILOBITE TESTING L.L.C.

OPERATOR : Murfin Drilling Co.
 WELL NAME: William Unit #2-32
 LOCATION : 32-2S-41W Cheyenne KS.
 INTERVAL : 4711.00 To 4746.00 ft

DATE 10-11-99

KB 3679.00 ft TICKET NO: 11978 DST #4
 GR 3674.00 ft FORMATION: Lans/KC "E"
 TD 4746.00 ft TEST TYPE: CONVENTIONAL

RECORDER DATA

Mins	Field	1	2	3	4	TIME DATA-----
PF 30 Rec.	13339	13339	3024			PF Fr. 0452 to 0522 hr
SI 45 Range (Psi)	4025.0	4025.0	4995.0	0.0	0.0	IS Fr. 0522 to 0602 hr
SF 30 Clock (hrs)	12 HR	12	ALP			SF Fr. 0602 to 0632 hr
FS 45 Depth (ft)	4741.0	4741.0	4715.0	0.0	0.0	FS Fr. 0632 to 0722 hr

	Field	1	2	3	4	
A. Init Hydro	2323.0	2357.0	2347.0	0.0	0.0	T STARTED 0245 hr
B. First Flow	20.0	66.0	19.0	0.0	0.0	T ON BOTM 0450 hr
Bl. Final Flow	20.0	66.0	22.0	0.0	0.0	T OPEN 0452 hr
C. In Shut-in	52.0	83.0	61.0	0.0	0.0	T PULLED 0722 hr
D. Init Flow	20.0	66.0	22.0	0.0	0.0	T OUT 0915 hr
E. Final Flow	20.0	66.0	23.0	0.0	0.0	
F. Fl Shut-in	41.0	58.0	41.0	0.0	0.0	TOOL DATA-----
G. Final Hydro	2243.0	2273.0	2332.0	0.0	0.0	Tool Wt. 1800.00 lbs
Inside/Outside	0	0	I			Wt Set On Packer 30000.00 lbs
						Wt Pulled Loose 70000.00 lbs
						Initial Str Wt 65000.00 lbs
						Unseated Str Wt 65000.00 lbs
						Bot Choke 0.75 in
						Hole Size 8.88 in
						D Col. ID 2.25 in
						D. Pipe ID 3.80 in
						D.C. Length 506.00 ft
						D.P. Length 4195.00 ft

RECOVERY

Tot Fluid 5.00 ft of 5.00 ft in DC and 0.00 ft in DP
 5.00 ft of Drilling mud
 0.00 ft of
 0.00 ft of
 0.00 ft of
 0.00 ft of
 0.00 ft of
 0.00 ft of
 0.00 ft of

MUD DATA-----

Mud Type	Chemical
Weight	8.90 lb/cf
Vis.	50.00 S/L
W.L.	10.80 in3
F.C.	0.00 in
Mud Drop N	

BLOW DESCRIPTION

Initial Flow:
 Weak blow built to 1/2" died back
 to surface
 Final Flow:
 No return blow

Amt. of fill	0.00 ft
Btm. H. Temp.	131.00 F
Hole Condition	Good
% Porosity	0.00
Packer Size	6.75 in
No. of Packers	2
Cushion Amt.	0.00
Cushion Type	
Reversed Out N	
Tool Chased N	
Tester	Rod Steinbrink
Co. Rep.	Roger Welty
Contr.	Murfin
Rig #	3
Unit #	
Pump T.	

SAMPLES:
 SENT TO:

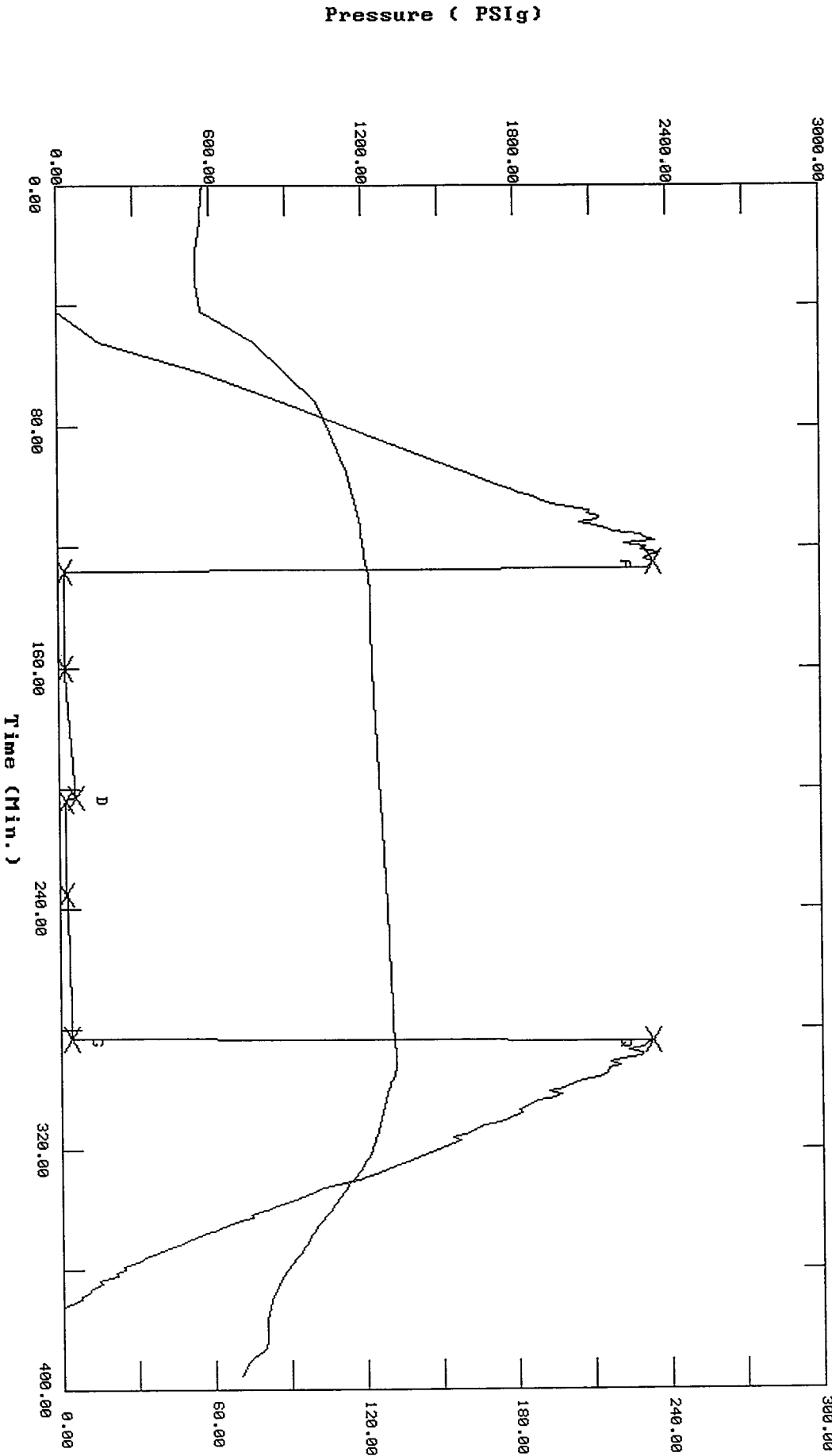
Test Successful: Y

11978 DST #4 William Unit #2-32 Murfin Drig. Co.

TEST HISTORY

Flag Points
 t<Min.> P<PSig>

R:	0.00	2347.54
B:	0.00	19.69
C:	32.00	22.25
D:	43.00	61.63
E:	0.00	22.33
F:	31.00	23.92
G:	48.00	41.18
Q:	0.00	2332.04

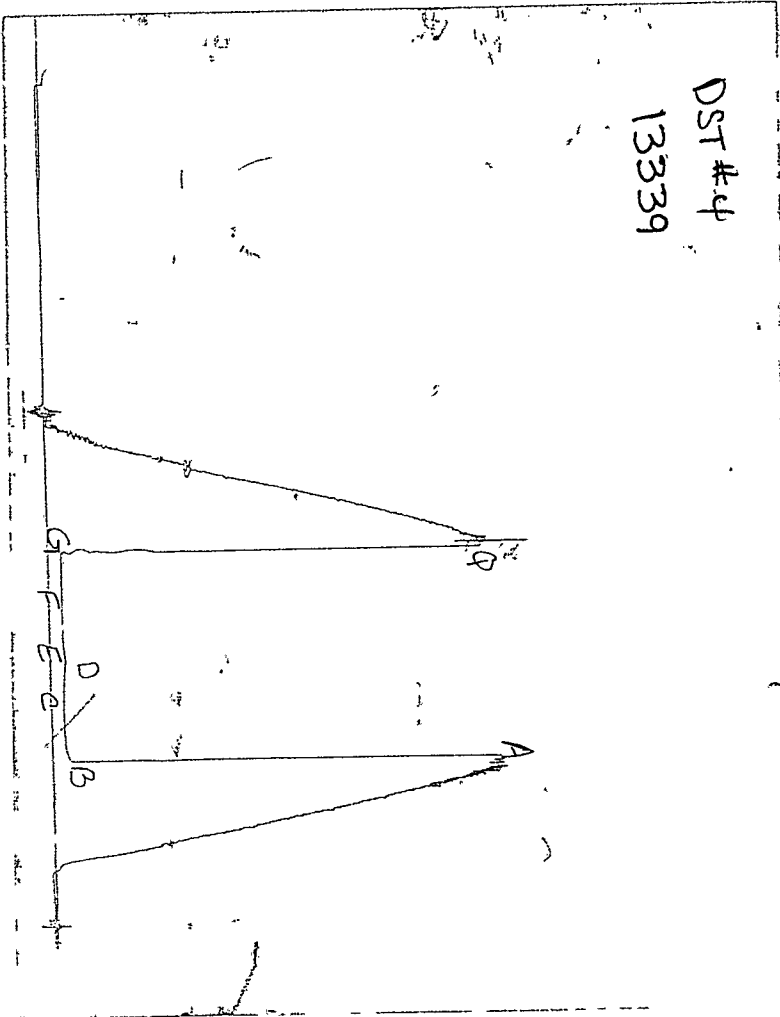


Pressure (PSig)

Temperature (DEG F)

Time (Min.)

CHART PAGE



This is a photocopy of the actual AK-1 recorder chart