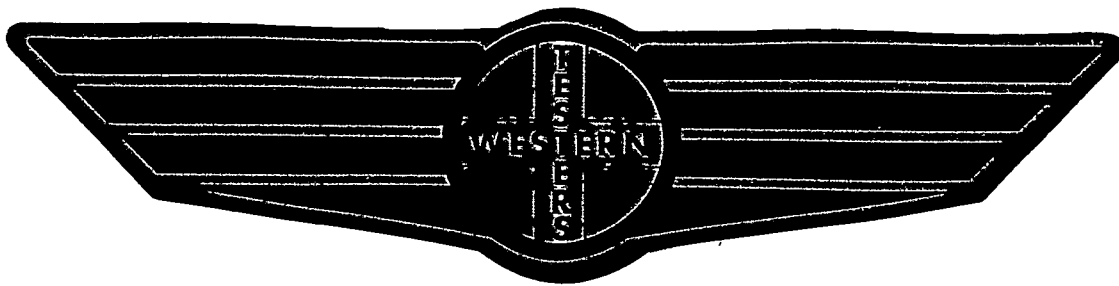


FORMATION TEST REPORT



Home Office:

Wichita, Kansas 67201

P.O. Box 1599

Phone 1 - 800 - 688 - 7021

COMPANY RITCHIE EXPLORATION, INC. LEASE & WELL NO. SMART #1 SEC. 7 TWP. 10S RGE. 31W TEST NO. 1 DATE 5/7/91

WESTERN TESTING CO. INC.
SUBSURFACE PRESSURE SURVEY

DATE : 5-7-91 TICKET : 17225
CUSTOMER : RITCHIE EXPLORATION INC. LEASE : SWART
WELL : 1 TEST: 1 GEOLOGIST : K. NOAH
ELEVATION : 3035 KB FORMATION : H-I-J
SECTION : 7 TOWNSHIP : 10S
RANGE : 31W COUNTY : THOMAS STATE : KANSAS
GAUGE SN# : 4376 RANGE : 4000 CLOCK : 12

INTERVAL FROM : 4203 TO : 4300 TOTAL DEPTH : 4300
DEPTH OF SELECTIVE ZONE :
PACKER DEPTH : 4198 SIZE : 6.75
PACKER DEPTH : 4203 SIZE : 6.75
PACKER DEPTH : SIZE :
PACKER DEPTH : SIZE :

DRILLING CON. : WHITE & ELLIS RIG 9
MUD TYPE : CHEMICAL VISCOSITY : 43
WEIGHT : 9.3 WATER LOSS (CC) : 9.6
CHLORIDES (PPM) : 2400
JARS-MAKE : SERIAL NUMBER :
DID WELL FLOW ? : NO REVERSED OUT ? : NO

DRILL COLLAR LENGTH : 0 FT I.D. inch : 0.00
WEIGHT PIPE LENGTH : 0 FT I.D. inch : 0.00
DRILL PIPE LENGTH : 4186 FT I.D. inch : 3.80
TEST TOOL LENGTH : 17 FT TOOL SIZE : 5.50
ANCHOR LENGTH : 97 FT ANCHOR SIZE : 5.50
SURFACE CHOKE SIZE : .75 IN BOTTOM CHOKE SIZE : .75
MAIN HOLE SIZE : 7.875 IN TOOL JOINT SIZE : 4.5XH

BLOW COMMENT #1 : INITIAL FLOW PERIOD WEAK 1/4 INCH BLOW BUILDING
BLOW COMMENT #2 : TO 1 3/4 INCH IN WATER IN 45 MINUTES.
BLOW COMMENT #3 : FINAL FLOW PERIOD WEAK STEADY 1/4 INCH BLOW
BLOW COMMENT #4 : THROUGHOUT OPEN OF 45 MINUTES.

RECOVERED : 150 FT OF: MUD WITH 1 OR 2 SPOTS OF OIL
RECOVERED : 0 FT OF: CHLORIDES 3000 P.P.M.

Total Barrels Fluid = 2.10
Total Fluid Prod Rate = 33.66 BFPD
Indicated Wtr Rate = 3.37 BWPD

REMARK 1 :
REMARK 2 :
REMARK 3 :
REMARK 4 :

SET PACKER(S) : 11:00 A.M.

TIME STARTED OFF BOTTOM : 2:00 A.M.

WELL TEMPERATURE : 121

INITIAL HYDROSTATIC PRESSURE

(A) 2127

INITIAL FLOW PERIOD MIN: 45

(B) 62 PSI TO (C) : 82

INITIAL CLOSED IN PERIOD MIN: 45

(D) 1350

FINAL FLOW PERIOD MIN: 45

(E) 95 PSI TO (F) : 109

FINAL CLOSED IN PERIOD MIN: 45

(G) 1326

FINAL HYDROSTATIC PRESSURE

(H) 2107

WESTERN TESTING CO. INC.
WICHITA-KANSAS

Pressure Transient Report

COMPANY : RITCHIE EXPLORATION INC.
RIG : THOMAS-KANSAS
FIELD : SWART
WELL : 1
DATE : 5-7-91
GAUGE NO : 4376

OPERATIONAL COMMENTS

COMPANY : RITCHIE EXPLORATION INC.
WELL : 1
GAUGE # : 4376
DATE : 7/ 5/91

FIELD : SWART
JOB # : 17225
DEPTH : 4300
TEST :

DATA No.	REAL TIME HR:MN:SS	ELAPSE TIME DELTA HOURS	PRESSURE PSIG	TEMP DEG F	DELTA P Pi-P(i-1)
INITIAL FLOW PERIOD					
2	11: 0: 0	0.000	62.000	121.00	0.000
3	11: 4:59	0.083	62.000	121.00	0.000
4	11:10: 0	0.167	62.000	121.00	0.000
5	11:15: 0	0.250	66.000	121.00	4.000
6	11:19:59	0.333	71.000	121.00	5.000
7	11:25: 0	0.417	73.000	121.00	2.000
8	11:30: 0	0.500	76.000	121.00	3.000
9	11:34:59	0.583	78.000	121.00	2.000
10	11:40: 0	0.667	80.000	121.00	2.000
11	11:45: 0	0.750	82.000	121.00	2.000
INITIAL SHUT-IN PERIOD					
12	11:48: 0	0.800	399.000	121.00	317.000
13	11:51: 0	0.850	1086.000	121.00	687.000
14	11:54: 0	0.900	1183.000	121.00	97.000
15	11:57: 0	0.950	1229.000	121.00	46.000
16	12: 0: 0	1.000	1254.000	121.00	25.000
17	12: 2:59	1.050	1274.000	121.00	20.000
18	12: 6: 0	1.100	1287.000	121.00	13.000
19	12: 9: 0	1.150	1301.000	121.00	14.000
20	12:12: 0	1.200	1311.000	121.00	10.000
21	12:15: 0	1.250	1321.000	121.00	10.000
22	12:18: 0	1.300	1327.000	121.00	6.000
23	12:21: 0	1.350	1333.000	121.00	6.000
24	12:24: 0	1.400	1339.000	121.00	6.000
25	12:27: 0	1.450	1344.000	121.00	5.000
26	12:30: 0	1.500	1350.000	121.00	6.000
FINAL FLOW PERIOD					
27	12:31: 0	1.517	95.000	121.00	-1255.000
28	12:34:59	1.583	95.000	121.00	0.000
29	12:40: 0	1.667	95.000	121.00	0.000
30	12:45: 0	1.750	98.000	121.00	3.000
31	12:49:59	1.833	100.000	121.00	2.000
32	12:55: 0	1.917	102.000	121.00	2.000
33	13: 0: 0	2.000	105.000	121.00	3.000
34	13: 4:59	2.083	107.000	121.00	2.000
35	13:10: 0	2.167	108.000	121.00	1.000
36	13:15: 0	2.250	109.000	121.00	1.000
FINAL SHUT-IN PERIOD					
37	13:18: 0	2.300	555.000	121.00	446.000
38	13:21: 0	2.350	1067.000	121.00	512.000
39	13:24: 0	2.400	1161.000	121.00	94.000
40	13:27: 0	2.450	1199.000	121.00	38.000
41	13:30: 0	2.500	1225.000	121.00	26.000
42	13:33: 0	2.550	1245.000	121.00	20.000
43	13:36: 0	2.600	1261.000	121.00	16.000
44	13:39: 0	2.650	1273.000	121.00	12.000
45	13:42: 0	2.700	1284.000	121.00	11.000
46	13:45: 0	2.750	1295.000	121.00	11.000
47	13:48: 0	2.800	1303.000	121.00	8.000
48	13:51: 0	2.850	1310.000	121.00	7.000

COMPANY : RITCHIE EXPLORATION INC.
WELL : 1
GAUGE # : 4376
DATE : 7/ 5/91

FIELD : SWART
JOB # : 17225
DEPTH : 4300
TEST :

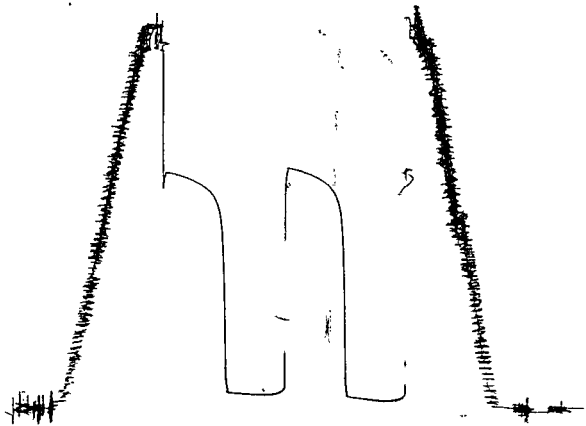
DATA No.	REAL TIME HR:MN:SS	ELAPSE TIME DELTA HOURS	PRESSURE PSIG	TEMP DEG F	DELTA P Pi-P(i-1)
49	13:54: 0	2.900	1316.000	121.00	6.000
50	13:57: 0	2.950	1322.000	121.00	6.000
51	14: 0: 0	3.000	1326.000	121.00	4.000

WESTERN TESTING CO. INC.

KT 17225

0

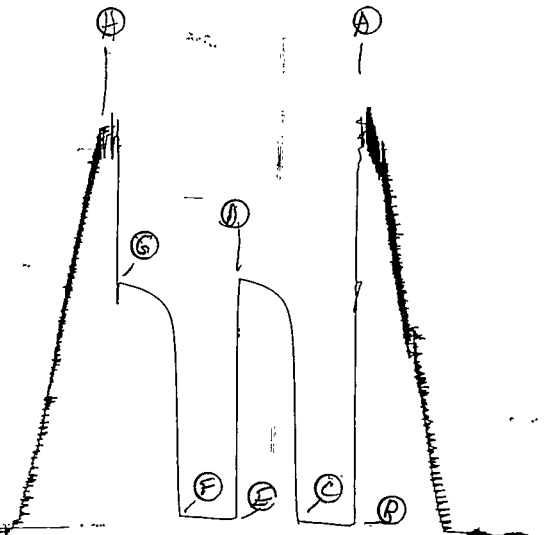
1049



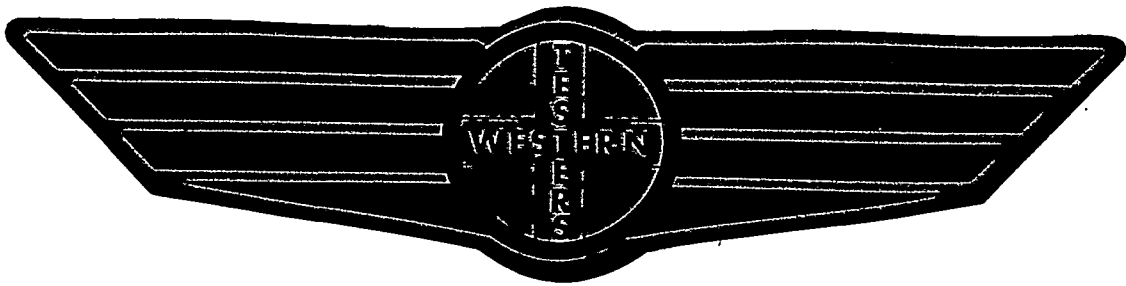
KT 17225

4B76

~~Z~~



FORMATION TEST REPORT



Home Office:

Wichita, Kansas 67201

P.O. Box 1599

Phone 1 - 800 - 688 - 7021

WESTERN TESTING CO. INC.
SUBSURFACE PRESSURE SURVEY

DATE : 5-8-91 TICKET : 16126
CUSTOMER : RITCHIE EXPLORATION INC. LEASE : SWART
WELL : 1 TEST: 2 GEOLOGIST : K. NOAH
ELEVATION : 3035 KB FORMATION : K - L
SECTION : 7 TOWNSHIP : 10S
RANGE : 31W COUNTY : THOMAS STATE : KANSAS
GAUGE SN# : 4376 RANGE : 4000 CLOCK : 12

INTERVAL FROM : 4293 TO : 4364 TOTAL DEPTH : 4364
DEPTH OF SELECTIVE ZONE :
PACKER DEPTH : 4288 SIZE : 6.75
PACKER DEPTH : 4293 SIZE : 6.75
PACKER DEPTH : SIZE :
PACKER DEPTH : SIZE :

DRILLING CON. : WHITE & ELLIS RIG 9
MUD TYPE : CHEMICAL VISCOSITY : 46
WEIGHT : 9.2 WATER LOSS (CC) : 9.6
CHLORIDES (PPM) : 2400
JARS-MAKE : SERIAL NUMBER :
DID WELL FLOW ? : NO REVERSED OUT ? : NO

DRILL COLLAR LENGTH : 0 FT I.D. inch : 0.00
WEIGHT PIPE LENGTH : 0 FT I.D. inch : 0.00
DRILL PIPE LENGTH : 4276 FT I.D. inch : 3.80
TEST TOOL LENGTH : 17 FT TOOL SIZE : 5.50
ANCHOR LENGTH : 71 FT ANCHOR SIZE : 5.50
SURFACE CHOKE SIZE : .75 IN BOTTOM CHOKE SIZE : .75
MAIN HOLE SIZE : 7.875 IN TOOL JOINT SIZE : 4.5XH

BLOW COMMENT #1 : WEAK BLOW BUILDING TO 4 INCH IN WATER IN
BLOW COMMENT #2 : 45 MINUTES THROUGHOUT FLOW PERIODS.
BLOW COMMENT #3 :
BLOW COMMENT #4 :

RECOVERED : 393 FT OF: MUDDY WATER-30%MUD:70%WTR
RECOVERED : 0 FT OF: STRONG SULFUR ODOR
RECOVERED : 0 FT OF: CHLORIDES 48000 P.P.M.

Total Barrels Fluid = 5.51
Total Fluid Prod Rate = 88.20 BFPD
Indicated Wtr Rate = 61.74 BFPD

REMARK 1 :
REMARK 2 : RW = .259 @ 52 DEGREES
REMARK 3 :
REMARK 4 :

SET PACKER(S) : 4:45 A.M. TIME STARTED OFF BOTTOM : 7:45 A.M.
WELL TEMPERATURE : 122
INITIAL HYDROSTATIC PRESSURE (A) 2155
INITIAL FLOW PERIOD MIN: 45 (B) 58 PSI TO (C) : 111
INITIAL CLOSED IN PERIOD MIN: 45 (D) 1381
FINAL FLOW PERIOD MIN: 45 (E) 135 PSI TO (F) : 177
FINAL CLOSED IN PERIOD MIN: 45 (G) 1368
FINAL HYDROSTATIC PRESSURE (H) 2130

WESTERN TESTING CO. INC.
WICHITA-KANSAS

Pressure Transient Report

COMPANY : RITCHIE EXPLORATION INC.
RIG : THOMAS-KANSAS
FIELD : SWART
WELL : 1
DATE : 5-8-91
GAUGE NO : 4376

OPERATIONAL COMMENTS

RW = .259 @ 52 DEGREES

COMPANY : RITCHIE EXPLORATION INC.
WELL : 1
GAUGE # : 4376
DATE : 8/ 5/91

FIELD : SWART
JOB # : 16126
DEPTH : 4364
TEST :

DATA No.	REAL TIME HR:MN:SS	ELAPSE TIME DELTA HOURS	PRESSURE PSIG	TEMP DEG F	DELTA P Pi-P(i-1)
INITIAL FLOW PERIOD					
2	4:45: 0	0.000	58.000	122.00	0.000
3	4:49:59	0.083	58.000	122.00	0.000
4	4:55: 0	0.167	58.000	122.00	0.000
5	5: 0: 0	0.250	66.000	122.00	8.000
6	5: 4:59	0.333	74.000	122.00	8.000
7	5:10: 0	0.417	83.000	122.00	9.000
8	5:15: 0	0.500	89.000	122.00	6.000
9	5:19:59	0.583	100.000	122.00	11.000
10	5:25: 0	0.667	108.000	122.00	8.000
11	5:30: 0	0.750	111.000	122.00	3.000
INITIAL SHUT-IN PERIOD					
12	5:33: 0	0.800	462.000	122.00	351.000
13	5:36: 0	0.850	1306.000	122.00	844.000
14	5:39: 0	0.900	1327.000	122.00	21.000
15	5:42: 0	0.950	1343.000	122.00	16.000
16	5:45: 0	1.000	1351.000	122.00	8.000
17	5:48: 0	1.050	1357.000	122.00	6.000
18	5:51: 0	1.100	1363.000	122.00	6.000
19	5:54: 0	1.150	1366.000	122.00	3.000
20	5:57: 0	1.200	1370.000	122.00	4.000
21	6: 0: 0	1.250	1372.000	122.00	2.000
22	6: 3: 0	1.300	1374.000	122.00	2.000
23	6: 6: 0	1.350	1376.000	122.00	2.000
24	6: 9: 0	1.400	1378.000	122.00	2.000
25	6:12: 0	1.450	1380.000	122.00	2.000
26	6:15: 0	1.500	1381.000	122.00	1.000
FINAL FLOW PERIOD					
27	6:16: 0	1.517	135.000	122.00	-1246.000
28	6:19:59	1.583	135.000	122.00	0.000
29	6:25: 0	1.667	135.000	122.00	0.000
30	6:30: 0	1.750	141.000	122.00	6.000
31	6:34:59	1.833	147.000	122.00	6.000
32	6:40: 0	1.917	156.000	122.00	9.000
33	6:45: 0	2.000	165.000	122.00	9.000
34	6:49:59	2.083	168.000	122.00	3.000
35	6:55: 0	2.167	173.000	122.00	5.000
36	7: 0: 0	2.250	177.000	122.00	4.000
FINAL SHUT-IN PERIOD					
37	7: 3: 0	2.300	846.000	122.00	669.000
38	7: 6: 0	2.350	1294.000	122.00	448.000
39	7: 9: 0	2.400	1318.000	122.00	24.000
40	7:12: 0	2.450	1330.000	122.00	12.000
41	7:15: 0	2.500	1337.000	122.00	7.000
42	7:18: 0	2.550	1343.000	122.00	6.000
43	7:21: 0	2.600	1349.000	122.00	6.000
44	7:24: 0	2.650	1351.000	122.00	2.000
45	7:27: 0	2.700	1355.000	122.00	4.000
46	7:30: 0	2.750	1358.000	122.00	3.000
47	7:33: 0	2.800	1360.000	122.00	2.000
48	7:36: 0	2.850	1362.000	122.00	2.000

COMPANY : RITCHIE EXPLORATION INC.
WELL : 1
GAUGE # : 4376
DATE : 8/ 5/91

FIELD : SWART
JOB # : 16126
DEPTH : 4364
TEST :

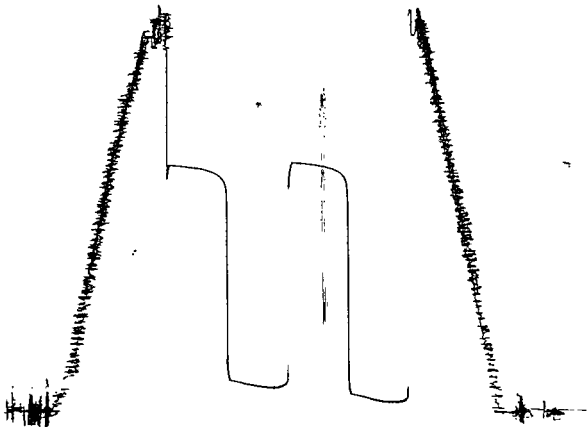
DATA No.	REAL TIME HR:MN:SS	ELAPSE TIME DELTA HOURS	PRESSURE PSIG	TEMP DEG F	DELTA P Pi-P(i-1)
49	7:39: 0	2.900	1364.000	122.00	2.000
50	7:42: 0	2.950	1365.000	122.00	1.000
51	7:45: 0	3.000	1368.000	122.00	3.000

WESTERN TESTING CO. INC.

KT 16/26

1049

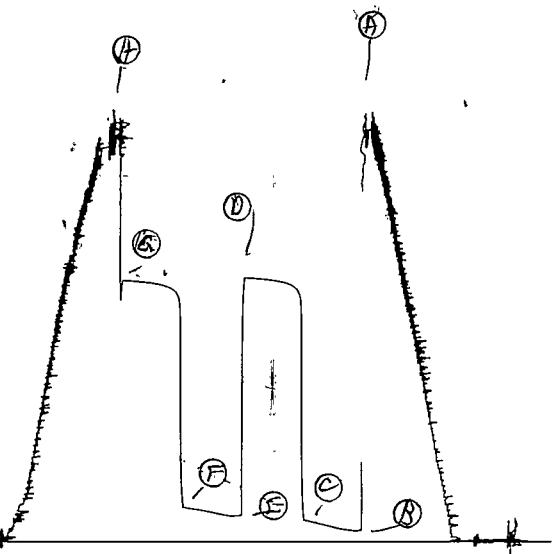
0



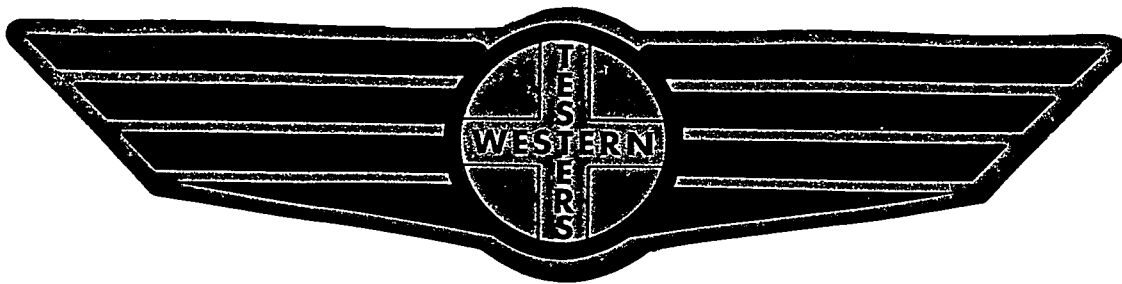
KT 16156

4/3/76

Z



FORMATION TEST REPORT



Home Office:

P.O. Box 1599

Wichita, Kansas 67201

Phone 1 - 800 - 688 - 7021

COMPANY RTICHTIE EXPLORATION, INC. LEASE & WELL NO. SWART #1 SEC. 7 TWP. 10S RGE. 31W TEST NO. 3 DATE 5/9/91

WESTERN TESTING CO. INC.
SUBSURFACE PRESSURE SURVEY

DATE : 5/9/91
CUSTOMER : RITCHIE EXPLORATION INC.
WELL : 1 TEST: 3
ELEVATION : 3035 KB
SECTION : 7
RANGE : 31W COUNTY : THOMAS
GAUGE SN# : 4376 RANGE : 4000
TICKET : 16127
LEASE : SWART
GEOLOGIST : NOAH
FORMATION : PAWNEE-BPL
TOWNSHIP : 10S
STATE : KANSAS
CLOCK : 12

INTERVAL FROM : 4467 TO : 4635 TOTAL DEPTH : 4635
DEPTH OF SELECTIVE ZONE :
PACKER DEPTH : 4462 SIZE : 6.75
PACKER DEPTH : 4467 SIZE : 6.75
PACKER DEPTH : SIZE :
PACKER DEPTH : SIZE :

DRILLING CON. : WHITE & ELLIS RIG 9
MUD TYPE : CHEMICAL VISCOSITY : 48
WEIGHT : 9.4 WATER LOSS (CC) : 9.6
CHLORIDES (PPM) : 2500
JARS-MAKE : NO SERIAL NUMBER : NO
DID WELL FLOW ? : NO REVERSED OUT ? : NO

DRILL COLLAR LENGTH : 0 FT I.D. inch : 0.00
WEIGHT PIPE LENGTH : 0 FT I.D. inch : 0.00
DRILL PIPE LENGTH : 4450 FT I.D. inch : 3.80
TEST TOOL LENGTH : 17 FT TOOL SIZE : 5.50
ANCHOR LENGTH : 168 FT ANCHOR SIZE : 5.50
SURFACE CHOKE SIZE : .75 IN BOTTOM CHOKE SIZE : .75
MAIN HOLE SIZE : 7.875 IN TOOL JOINT SIZE : 4.5XH

BLOW COMMENT #1 : INITIAL FLOW PERIOD WEAK SURFACE BLOW-
BLOW COMMENT #2 : DIED IN 13 MINUTES.
BLOW COMMENT #3 : FINAL FLOW PERIOD NO BLOW.
BLOW COMMENT #4 :

WESTERN TESTING CO. INC.
WICHITA-KANSAS

Pressure Transient Report

COMPANY : RITCHIE EXPLORATION INC.
RIG : THOMAS-KANSAS
FIELD : SWART
WELL : 1
DATE : 5/9/91
GAUGE NO : 4376

OPERATIONAL COMMENTS

RESET PACKER TWICE TO GET PACKER SEAT.

COMPANY : RITCHIE EXPLORATION INC.
 WELL : 1
 GAUGE # : 4376
 DATE : 9/ 5/91

FIELD : SWART
 JOB # : 16127
 DEPTH : 4635
 TEST :

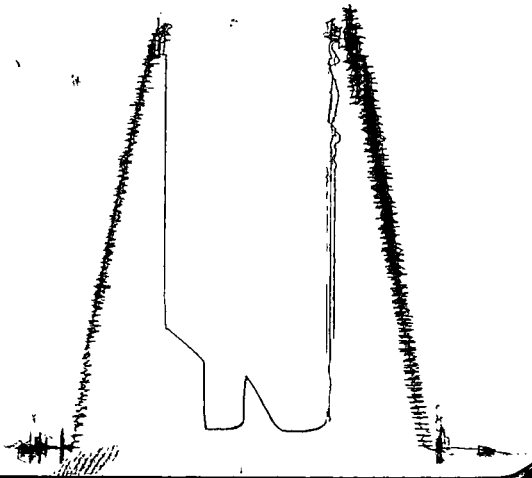
DATA No.	REAL TIME HR:MN:SS	ELAPSE TIME DELTA HOURS	PRESSURE PSIG	TEMP DEG F	DELTA P Pi-P(i-1)
INITIAL FLOW PERIOD					
2	4:15: 0	0.000	106.000	123.00	0.000
3	4:19:59	0.083	106.000	123.00	0.000
4	4:25: 0	0.167	106.000	123.00	0.000
5	4:30: 0	0.250	106.000	123.00	0.000
6	4:34:59	0.333	106.000	123.00	0.000
7	4:40: 0	0.417	106.000	123.00	0.000
8	4:45: 0	0.500	106.000	123.00	0.000
INITIAL SHUT-IN PERIOD					
9	4:48: 0	0.550	106.000	123.00	0.000
10	4:51: 0	0.600	112.000	123.00	6.000
11	4:54: 0	0.650	146.000	123.00	34.000
12	4:57: 0	0.700	187.000	123.00	41.000
13	5: 0: 0	0.750	226.000	123.00	39.000
14	5: 3: 0	0.800	268.000	123.00	42.000
15	5: 6: 0	0.850	309.000	123.00	41.000
16	5: 9: 0	0.900	346.000	123.00	37.000
17	5:12: 0	0.950	385.000	123.00	39.000
18	5:15: 0	1.000	420.000	123.00	35.000
FINAL FLOW PERIOD					
19	5:16: 0	1.017	109.000	123.00	-311.000
20	5:19:59	1.083	109.000	123.00	0.000
21	5:25: 0	1.167	109.000	123.00	0.000
22	5:30: 0	1.250	109.000	123.00	0.000
23	5:34:59	1.333	109.000	123.00	0.000
24	5:40: 0	1.417	109.000	123.00	0.000
FINAL SHUT-IN PERIOD					
25	5:45: 0	1.500	109.000	123.00	0.000
26	5:48: 0	1.550	508.000	123.00	399.000
27	5:51: 0	1.600	526.000	123.00	18.000
28	5:54: 0	1.650	545.000	123.00	19.000
29	5:57: 0	1.700	568.000	123.00	23.000
30	6: 0: 0	1.750	586.000	123.00	18.000
31	6: 3: 0	1.800	606.000	123.00	20.000
32	6: 6: 0	1.850	628.000	123.00	22.000
33	6: 9: 0	1.900	649.000	123.00	21.000
34	6:12: 0	1.950	665.000	123.00	16.000
35	6:15: 0	2.000	683.000	123.00	18.000

WESTERN TESTING CO. INC.

TKT 16127

①

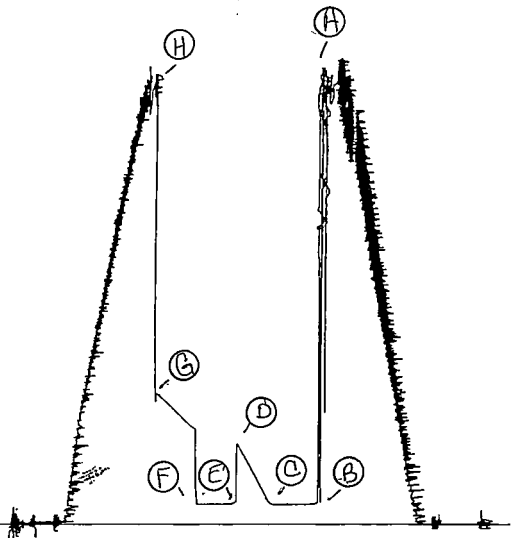
1049



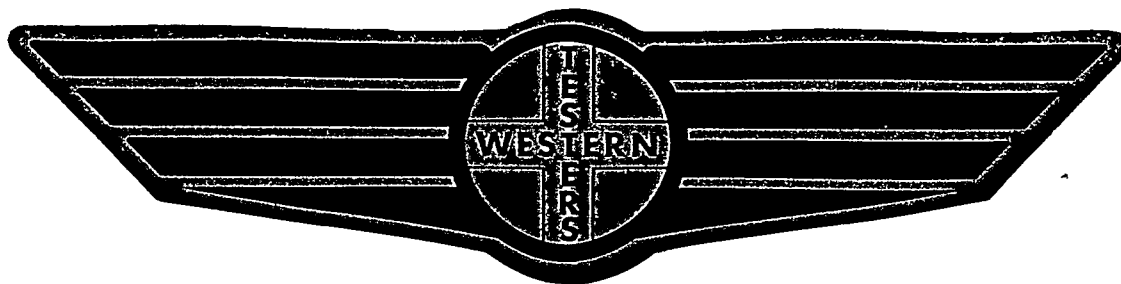
TKT 16127

I

4376



FORMATION TEST REPORT



Home Office:

Wichita, Kansas 67201

P.O. Box 1599

Phone 1 - 800-688-7021

COMPANY BRITO OIL COMPANY, INC. LEASE & WELL NO. SWART #1-15 SEC. 15 TWP. 10S RGE. 31W TEST NO. 4 DATE 6/20/91

WESTERN TESTING CO. INC. -
SUBSURFACE PRESSURE SURVEY

DATE : 6-20-91 TICKET : 18010
CUSTOMER : BRITO OIL COMPANY INC. LEASE : SWART
WELL : 1-15 TEST: 4 GEOLOGIST : BRITO
ELEVATION : 3003 KB FORMATION : MARM & PAW
SECTION : 15 TOWNSHIP : 10S
RANGE : 31W COUNTY : THOMAS STATE : KANSAS
GAUGE SN# : 6233 RANGE : 4000 CLOCK : 12

INTERVAL FROM : 4350 TO : 4455 TOTAL DEPTH : 4455
DEPTH OF SELECTIVE ZONE :
PACKER DEPTH : 4345 SIZE : 6.75
PACKER DEPTH : 4350 SIZE : 6.75
PACKER DEPTH : SIZE :
PACKER DEPTH : SIZE :

DRILLING CON. : BLUE GOOSE RIG 1
MUD TYPE : CHEMICAL VISCOSITY : 46
WEIGHT : 9.2 WATER LOSS (CC) : 8.0
CHLORIDES (PPM) : 1200
JARS-MAKE : SERIAL NUMBER :
DID WELL FLOW ? : NO REVERSED OUT ? : NO

DRILL COLLAR LENGTH : 247 FT I.D. inch : 2.20
WEIGHT PIPE LENGTH : 0 FT I.D. inch : 0.00
DRILL PIPE LENGTH : 4083 FT I.D. inch : 3.80
TEST TOOL LENGTH : 20 FT TOOL SIZE : 5.50
ANCHOR LENGTH : 105 FT ANCHOR SIZE : 5.50
SURFACE CHOKE SIZE : .75 IN BOTTOM CHOKE SIZE : .75
MAIN HOLE SIZE : 7.875 IN TOOL JOINT SIZE : 4.5XH

BLOW COMMENT #1 : INITIAL FLOW PERIOD WEAK STEADY BLOW - 1/2
BLOW COMMENT #2 : INCH IN WATER.
BLOW COMMENT #3 : FINAL FLOW PERIOD FAIR BLOW - 5 INCH IN WATER.
BLOW COMMENT #4 :

RECOVERED : 65 FT OF: OIL CUT MUD-35%OIL;65%MUD

Total Barrels Fluid = 0.31
Total Fluid Prod Rate = 4.89 BFPD
Indicated Oil Rate = 1.71 BOPD
Indicated Wtr Rate = 0.32 BWPD
Corrected Oil Rate = 2.01 BOPD
Corrected Wtr Rate = 0.37 BWPD

REMARK 1 :
REMARK 2 :
REMARK 3 :
REMARK 4 :

SET PACKER(S) : 7:35 A.M.

TIME STARTED OFF BOTTOM : 10:50 A.M.

WELL TEMPERATURE : 129

INITIAL HYDROSTATIC PRESSURE

INITIAL FLOW PERIOD MIN: 30

(A) 2192

INITIAL CLOSED IN PERIOD MIN: 48

(B) 49 PSI TO (C) : 49

FINAL FLOW PERIOD MIN: 60

(D) 671

FINAL CLOSED IN PERIOD MIN: 63

(E) 59 PSI TO (F) : 59

FINAL HYDROSTATIC PRESSURE

(G) 956

(H) 2178

WESTERN TESTING CO. INC.
WICHITA-KANSAS

Pressure Transient Report

COMPANY : BRITO OIL COMPANY INC.
RIG : THOMAS-KANSAS
FIELD : SWART
WELL : 1-15
DATE : 6-20-91
GAUGE NO : 6233

OPERATIONAL COMMENTS

COMPANY : BRITO OIL COMPANY INC.
 WELL : 1-15
 GAUGE # : 6233
 DATE : 20/ 6/91

FIELD : SWART
 JOB # : 18010
 DEPTH : 4455
 TEST :

DATA No.	REAL TIME HR:MN:SS	ELAPSE TIME DELTA HOURS	PRESSURE PSIG	TEMP DEG F	DELTA P Pi-P(i-1)
INITIAL FLOW PERIOD					
2	7:35: 0	0.000	49.000	129.00	0.000
3	7:39:59	0.083	49.000	129.00	0.000
4	7:45: 0	0.167	49.000	129.00	0.000
5	7:50: 0	0.250	49.000	129.00	0.000
6	7:54:59	0.333	49.000	129.00	0.000
7	8: 0: 0	0.417	49.000	129.00	0.000
8	8: 5: 0	0.500	49.000	129.00	0.000
INITIAL SHUT-IN PERIOD					
9	8: 8: 0	0.550	49.000	129.00	0.000
10	8:11: 0	0.600	49.000	129.00	0.000
11	8:14: 0	0.650	49.000	129.00	0.000
12	8:17: 0	0.700	57.000	129.00	8.000
13	8:20: 0	0.750	70.000	129.00	13.000
14	8:23: 0	0.800	83.000	129.00	13.000
15	8:26: 0	0.850	101.000	129.00	18.000
16	8:29: 0	0.900	128.000	129.00	27.000
17	8:32: 0	0.950	165.000	129.00	37.000
18	8:35: 0	1.000	211.000	129.00	46.000
19	8:38: 0	1.050	266.000	129.00	55.000
20	8:41: 0	1.100	336.000	129.00	70.000
21	8:44: 0	1.150	412.000	129.00	76.000
22	8:47: 0	1.200	494.000	129.00	82.000
23	8:50: 0	1.250	575.000	129.00	81.000
24	8:53: 0	1.300	671.000	129.00	96.000
FINAL FLOW PERIOD					
25	8:54: 0	1.317	59.000	129.00	-612.000
26	8:57:59	1.383	59.000	129.00	0.000
27	9: 3: 0	1.467	59.000	129.00	0.000
28	9: 8: 0	1.550	59.000	129.00	0.000
29	9:12:59	1.633	59.000	129.00	0.000
30	9:18: 0	1.717	59.000	129.00	0.000
31	9:23: 0	1.800	59.000	129.00	0.000
32	9:27:59	1.883	59.000	129.00	0.000
33	9:33: 0	1.967	59.000	129.00	0.000
34	9:38: 0	2.050	59.000	129.00	0.000
35	9:42:59	2.133	59.000	129.00	0.000
36	9:48: 0	2.217	59.000	129.00	0.000
37	9:53: 0	2.300	59.000	129.00	0.000
FINAL SHUT-IN PERIOD					
38	9:56: 0	2.350	59.000	129.00	0.000
39	9:58:59	2.400	60.000	129.00	1.000
40	10: 2: 0	2.450	69.000	129.00	9.000
41	10: 5: 0	2.500	82.000	129.00	13.000
42	10: 8: 0	2.550	101.000	129.00	19.000
43	10:11: 0	2.600	119.000	129.00	18.000
44	10:13:59	2.650	147.000	129.00	28.000
45	10:17: 0	2.700	183.000	129.00	36.000
46	10:20: 0	2.750	230.000	129.00	47.000
47	10:23: 0	2.800	283.000	129.00	53.000
48	10:26: 0	2.850	337.000	129.00	54.000

COMPANY : BRITO OIL COMPANY INC.
WELL : 1-15
GAUGE # : 6233
DATE : 20/ 6/91

FIELD : SWART
JOB # : 18010
DEPTH : 4455
TEST :

DATA No.	REAL TIME HR:MN:SS	ELAPSE TIME DELTA HOURS	PRESSURE PSIG	TEMP DEG F	DELTA P Pi-P(i-1)
49	10:29: 0	2.900	398.000	129.00	61.000
50	10:31:59	2.950	480.000	129.00	82.000
51	10:35: 0	3.000	556.000	129.00	76.000
52	10:38: 0	3.050	635.000	129.00	79.000
53	10:41: 0	3.100	703.000	129.00	68.000
54	10:44: 0	3.150	770.000	129.00	67.000
55	10:46:59	3.200	828.000	129.00	58.000
56	10:50: 0	3.250	878.000	129.00	50.000
57	10:53: 0	3.300	921.000	129.00	43.000
58	10:56: 0	3.350	956.000	129.00	35.000

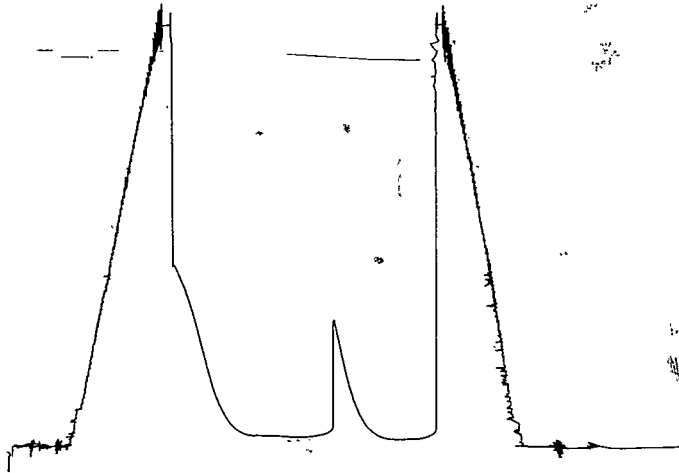
WESTERN TESTING CO. INC.

13962

DS 4

TKT 18010

O

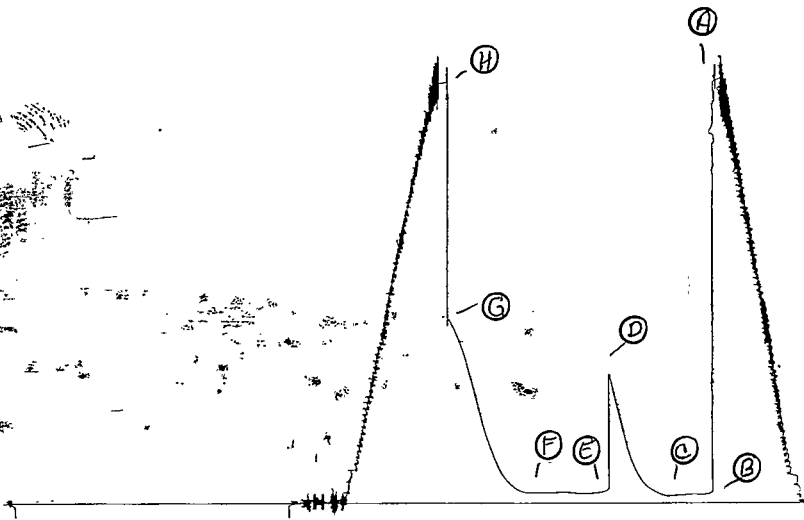


6253

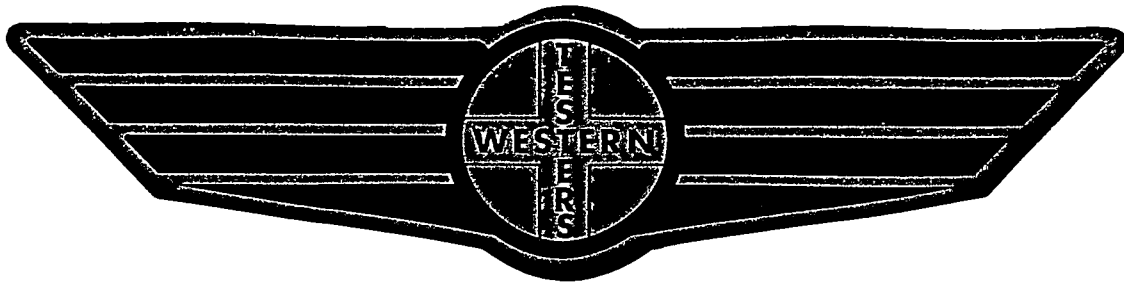
Step

TKT 18010

I



FORMATION TEST REPORT



Home Office:

Wichita, Kansas 67201

P.O. Box 1599

Phone 1 - 800-688-7021

COMPANY BRITO OIL COMPANY, INC. LEASE & WELL NO. SWART #1-15 SEC. 15 TWP. 10S RGE. 31W TEST NO. 5 DATE 6/20/91

WESTERN TESTING CO. INC.
SUBSURFACE PRESSURE SURVEY

DATE : 6-20-91
CUSTOMER : BRITO OIL COMPANY INC.
WELL : 1-15 TEST: 5
ELEVATION : 3003 KB
SECTION : 15
RANGE : 31W COUNTY : THOMAS
GAUGE SN# : 6233 RANGE : 4000
TICKET : 18011
LEASE : SWART
GEOLOGIST : BRITO
FORMATION : MYR STA-FT SC
TOWNSHIP : 10S
STATE : KANSAS
CLOCK : 12

INTERVAL FROM : 4448 TO : 4520 TOTAL DEPTH : 4520
DEPTH OF SELECTIVE ZONE :
PACKER DEPTH : 4443 SIZE : 6.75
PACKER DEPTH : 4448 SIZE : 6.75
PACKER DEPTH : SIZE :
PACKER DEPTH : SIZE :

DRILLING CON. : BLUE GOOSE RIG 1
MUD TYPE : CHEMICAL VISCOSITY : 46
WEIGHT : 9.2 WATER LOSS (CC) : 8.0
CHLORIDES (PPM) : 1200
JARS-MAKE : SERIAL NUMBER :
DID WELL FLOW ? : NO REVERSED OUT ? : NO

DRILL COLLAR LENGTH : 247 FT I.D. inch : 2.20
WEIGHT PIPE LENGTH : 0 FT I.D. inch : 0.00
DRILL PIPE LENGTH : 4181 FT I.D. inch : 3.80
TEST TOOL LENGTH : 20 FT TOOL SIZE : 5.50
ANCHOR LENGTH : 72 FT ANCHOR SIZE : 5.50
SURFACE CHOKE SIZE : .75 IN BOTTOM CHOKE SIZE : .75
MAIN HOLE SIZE : 7.875 IN TOOL JOINT SIZE : 4.5XH

BLOW COMMENT #1 : INITIAL FLOW PERIOD WEAK STEADY BLOW
BLOW COMMENT #2 : 1/4 INCH IN WATER.
BLOW COMMENT #3 : FINAL FLOW PERIOD WEAK BLOW-TOP OF WATER.
BLOW COMMENT #4 :

RECOVERED : 70 FT OF: OIL SPOTTED MUD-1%OIL;99%MUD

Total Barrels Fluid = 0.33
Total Fluid Prod Rate = 7.90 BFPD
Indicated Oil Rate = 0.08 BOPD
Indicated Wtr Rate = 0.71 BWPD
Corrected Oil Rate = 7.23 BOPD
Corrected Wtr Rate = 65.04 BWPD

REMARK 1 :
REMARK 2 :
REMARK 3 :
REMARK 4 :

SET PACKER(S) : 11:50 P.M.

TIME STARTED OFF BOTTOM : 1:50 A.M.

WELL TEMPERATURE : 130

INITIAL HYDROSTATIC PRESSURE

INITIAL FLOW PERIOD MIN: 30

INITIAL CLOSED IN PERIOD MIN: 30

FINAL FLOW PERIOD MIN: 30

FINAL CLOSED IN PERIOD MIN: 33

FINAL HYDROSTATIC PRESSURE

(A) 2254

(B) 41 PSI TO (C) : 41

(D) 933

(E) 65 PSI TO (F) : 65

(G) 784

(H) 2230

WESTERN TESTING CO. INC.
WICHITA-KANSAS

Pressure Transient Report

COMPANY : BRITO OIL COMPANY INC.
RIG : THOMAS-KANSAS
FIELD : SWART
WELL : 1-15
DATE : 6-20-91
GAUGE NO : 6233

OPERATIONAL COMMENTS

COMPANY : BRITO OIL COMPANY INC.
 WELL : 1-15
 GAUGE # : 6233
 DATE : 20/ 6/91

FIELD : SWART
 JOB # : 18011
 DEPTH : 4520
 TEST :

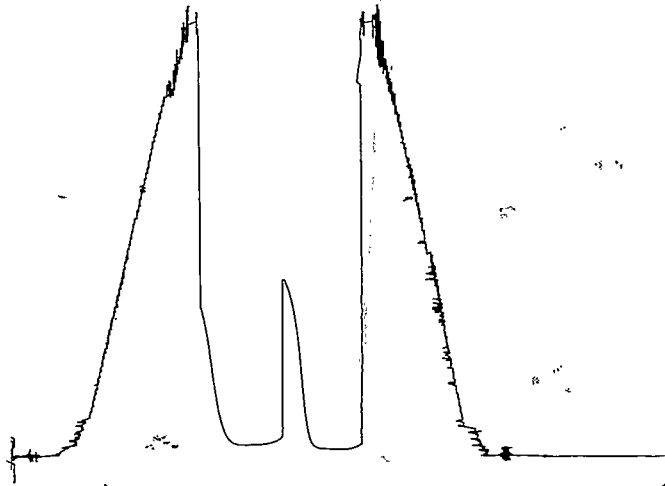
DATA No.	REAL TIME HR:MN:SS	ELAPSE TIME DELTA HOURS	PRESSURE PSIG	TEMP DEG F	DELTA P Pi-P(i-1)
INITIAL FLOW PERIOD					
2	11:50: 0	0.000	41.000	130.00	0.000
3	11:54:59	0.083	41.000	130.00	0.000
4	12: 0: 0	0.167	41.000	130.00	0.000
5	12: 5: 0	0.250	41.000	130.00	0.000
6	12: 9:59	0.333	41.000	130.00	0.000
7	12:15: 0	0.417	41.000	130.00	0.000
8	12:20: 0	0.500	41.000	130.00	0.000
INITIAL SHUT-IN PERIOD					
9	12:23: 0	0.550	46.000	130.00	5.000
10	12:26: 0	0.600	59.000	130.00	13.000
11	12:29: 0	0.650	96.000	130.00	37.000
12	12:32: 0	0.700	191.000	130.00	95.000
13	12:35: 0	0.750	332.000	130.00	141.000
14	12:38: 0	0.800	510.000	130.00	178.000
15	12:41: 0	0.850	671.000	130.00	161.000
16	12:44: 0	0.900	788.000	130.00	117.000
17	12:47: 0	0.950	873.000	130.00	85.000
18	12:50: 0	1.000	933.000	130.00	60.000
FINAL FLOW PERIOD					
19	12:51: 0	1.017	65.000	130.00	-868.000
20	12:54:59	1.083	65.000	130.00	0.000
21	13: 0: 0	1.167	65.000	130.00	0.000
22	13: 5: 0	1.250	65.000	130.00	0.000
23	13: 9:59	1.333	65.000	130.00	0.000
24	13:15: 0	1.417	65.000	130.00	0.000
25	13:20: 0	1.500	65.000	130.00	0.000
FINAL SHUT-IN PERIOD					
26	13:23: 0	1.550	65.000	130.00	0.000
27	13:26: 0	1.600	74.000	130.00	9.000
28	13:29: 0	1.650	86.000	130.00	12.000
29	13:32: 0	1.700	119.000	130.00	33.000
30	13:35: 0	1.750	179.000	130.00	60.000
31	13:38: 0	1.800	267.000	130.00	88.000
32	13:41: 0	1.850	380.000	130.00	113.000
33	13:44: 0	1.900	510.000	130.00	130.000
34	13:47: 0	1.950	626.000	130.00	116.000
35	13:50: 0	2.000	730.000	130.00	104.000
36	13:53: 0	2.050	784.000	130.00	54.000

WESTERN TESTING CO. INC.

KT. 18011

0

1240



6233

TKT 180111
I

