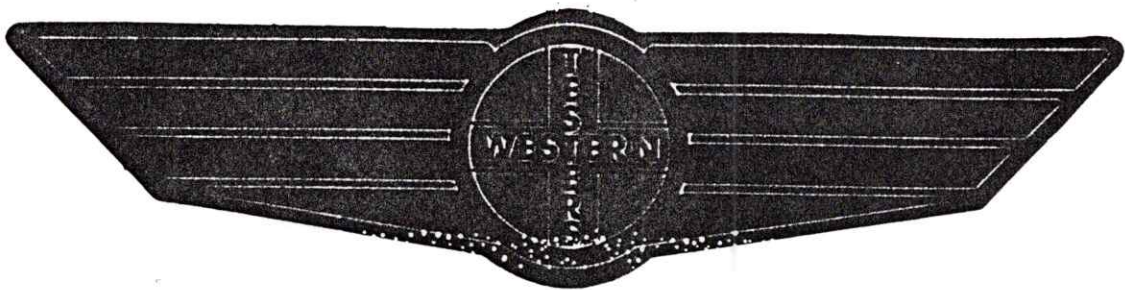


FORMATION TEST REPORT



Home Office:

Wichita, Kansas 67201

P.O. Box 1599

Phone (316) 262-5861

COMPANY MIDDLESEX OIL COMPANY

LEASE & WELL NO.

#1-30 BEESLEY

SEC. 30

TWP. 14S

RGE. 28W

TEST NO.

1

DATE

12/22/86

WESTERN TESTERS INC
SUBSURFACE PRESSURE SURVEY

DATE : 12-22-86
CUSTOMER : MIDDLESEX OIL COMPANY
WELL : #1-30 TEST: 1
ELEVATION : 2572 KB (TIGHT HOLE)
SECTION : 30
RANGE : 28W COUNTY : GOVE
GAUGE SN# : 1566 RANGE : 4300
TICKET : 12312
LEASE : BEESLEY
GEOLOGIST : D. CALVIN
FORMATION : LANSING I
TOWNSHIP : 14S
STATE : KANSAS
CLOCK : 12

INTERVAL FROM : 3874 TO : 3910 TOTAL DEPTH : 3910
DEPTH OF SELECTIVE ZONE :
PACKER DEPTH : 3869 SIZE : 6.75
PACKER DEPTH : 3874 SIZE : 6.75
PACKER DEPTH : SIZE :
PACKER DEPTH : SIZE :

DRILLING CON. : WHITE & ELLIS RIG #8
MUD TYPE : DAPAC VISCOSITY : 39
WEIGHT : 9.2 WATER LOSS (CC) : 7.2
CHLORIDES (PPM) : 8
JARS-MAKE : WTC SERIAL NUMBER : 411
DID WELL FLOW ? : NO REVERSED OUT ? : NO

DRILL COLLAR LENGTH : 414 FT I.D. inch : 2.20
WEIGHT PIPE LENGTH : 0 FT I.D. inch : 0.00
DRILL PIPE LENGTH : 3431 FT I.D. inch : 3.80
TEST TOOL LENGTH : 29 FT TOOL SIZE : 5.50
ANCHOR LENGTH : 36 FT ANCHOR SIZE : 5.50
SURFACE CHOKE SIZE : .75 IN BOTTOM CHOKE SIZE : .75
MAIN HOLE SIZE : 7.875 IN TOOL JOINT SIZE : 4.5 XH

BLOW COMMENT #1 : VERY WEAK BLOW-1/4" IN BUCKET.
BLOW COMMENT #2 :
BLOW COMMENT #3 :
BLOW COMMENT #4 :

RECOVERED : 70 FT OF: WATERY MUD/WITH FEW OIL SPOTS.

Total Barrels Fluid = 0.33
Total Fluid Prod Rate = 10.53 BFPD
Indicated Wtr Rate = 9.78 BWPD

REMARK 1 :
REMARK 2 : CHLORIDES: 15000 PPM
REMARK 3 : TOOL WAS PICKED-UP TOO HIGH INITIAL SHUT IN.
REMARK 4 :

SET PACKER(S) :	5:35 AM	TIME STARTED OFF BOTTOM :	7:20 AM
WELL TEMPERATURE :	116		
INITIAL HYDROSTATIC PRESSURE		(A)	1931
INITIAL FLOW PERIOD MIN:	15	(B)	58 PSI TO (C) : 58
INITIAL CLOSED IN PERIOD MIN:	33	(D)	1163
FINAL FLOW PERIOD MIN:	30	(E)	76 PSI TO (F) : 76
FINAL CLOSED IN PERIOD MIN:	33	(G)	1063
FINAL HYDROSTATIC PRESSURE		(H)	1931

COMPANY : MIDDLESEX OIL COMPANY
 WELL : #1-30
 GAUGE # : 1566
 DATE : 22/12/86

FIELD : BEESLEY
 JOB # : 12312
 DEPTH : 3910
 TEST : TIGHT HOLE

DATA No.	REAL TIME HR:MN:SS	ELAPSE TIME DELTA HOURS	PRESSURE PSIG	TEMP DEG F	DELTA P Pi-P(i-1)
1	5:35:0	0.000			
2	5:39:59	0.083	58.000	116.00	0.000
3	5:45:0	0.167	58.000	116.00	0.000
4	5:50:0	0.250	58.000	116.00	0.000
5	5:53:0	0.300	58.000	116.00	0.000
6	5:56:0	0.350	585.000	116.00	527.000
7	5:59:0	0.400	1686.000	116.00	1101.000
8	6: 2: 0	0.450	1133.000	116.00	-553.000
9	6: 5: 0	0.500	1108.000	116.00	-25.000
10	6: 8: 0	0.550	1107.000	116.00	-1.000
11	6:11:0	0.600	1113.000	116.00	6.000
12	6:14:0	0.650	1125.000	116.00	12.000
13	6:17:0	0.700	1135.000	116.00	10.000
14	6:20:0	0.750	1146.000	116.00	11.000
15	6:23:0	0.800	1154.000	116.00	8.000
16	6:24:0	0.817	1163.000	116.00	9.000
17	6:27:59	0.883	76.000	116.00	-1087.000
18	6:33:0	0.967	76.000	116.00	0.000
19	6:38:0	1.050	76.000	116.00	0.000
20	6:42:59	1.133	76.000	116.00	0.000
21	6:48:0	1.217	76.000	116.00	0.000
22	6:53:0	1.300	76.000	116.00	0.000
23	6:55:59	1.350	76.000	116.00	0.000
24	6:59:0	1.400	418.000	116.00	342.000
25	7: 1:59	1.450	674.000	116.00	256.000
26	7: 5: 0	1.500	827.000	116.00	153.000
27	7: 8: 0	1.550	908.000	116.00	81.000
28	7:11:0	1.600	952.000	116.00	44.000
29	7:14:0	1.650	984.000	116.00	32.000
30	7:17:0	1.700	1003.000	116.00	19.000
31	7:20:0	1.750	1024.000	116.00	21.000
32	7:23:0	1.800	1040.000	116.00	16.000
33	7:26:0	1.850	1054.000	116.00	14.000
			1063.000	116.00	9.000

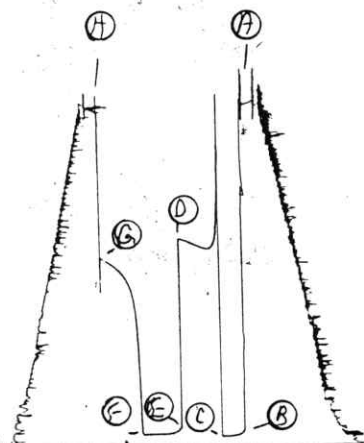
WESTERN TESTERS INC

1568

TK4 12312

middle sex
DST1

I

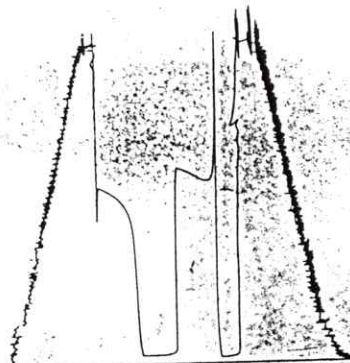


13629

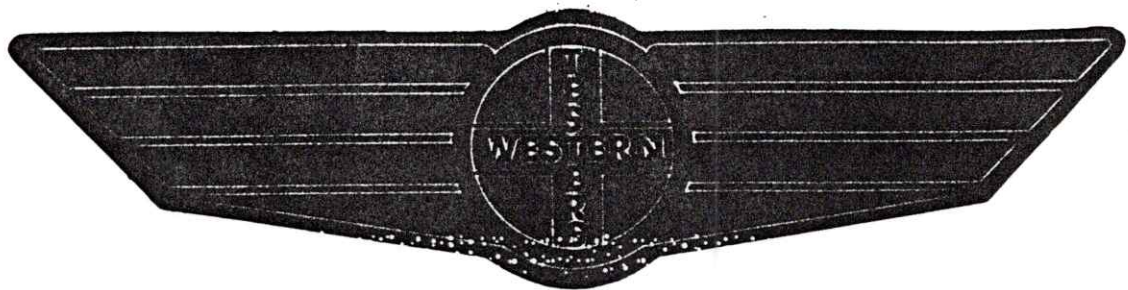
TK4 12312

middle sex
DST1

O



FORMATION TEST REPORT



Home Office:

Wichita, Kansas 67201

P.O. Box 1599

Phone (316) 262-5861

COMPANY MIDDLESEX OIL COMPANY LEASE & WELL NO. #1-30 BEESLEY SEC. 30 TWP. 14S RGE. 28W TEST NO. 2 DATE 12/22/86

WESTERN TESTERS INC
SUBSURFACE PRESSURE SURVEY

DATE : 12-22-86 TICKET : 12313
CUSTOMER : MIDDLESEX OIL COMPANY LEASE : BEESLEY
WELL : #1-30 TEST: 2 GEOLOGIST : DAN D???
ELEVATION : 2572 KB FORMATION : LANSING K
SECTION : 30 TOWNSHIP : 14S
RANGE : 28W COUNTY : GOVE STATE : KANSAS
GAUGE SN# : 1566 RANGE : 4300 CLOCK : 12

INTERVAL FROM : 3935 TO : 3952 TOTAL DEPTH : 3952
DEPTH OF SELECTIVE ZONE :
PACKER DEPTH : 3930 SIZE : 6.75
PACKER DEPTH : 3935 SIZE : 6.75
PACKER DEPTH : SIZE :
PACKER DEPTH : SIZE :

DRILLING CON. : WHITE & ELLIS RIG #8
MUD TYPE : DAPAC VISCOSITY : 39
WEIGHT : 9.2 WATER LOSS (CC) : 7.2
CHLORIDES (PPM) : 8000
JARS-MAKE : WTC SERIAL NUMBER : 411
DID WELL FLOW ? : NO REVERSED OUT ? :

DRILL COLLAR LENGTH : 414 FT I.D. inch : 2.20
WEIGHT PIPE LENGTH : 0 FT I.D. inch : 0.00
DRILL PIPE LENGTH : 3492 FT I.D. inch : 3.80
TEST TOOL LENGTH : 29 FT TOOL SIZE : 5.50
ANCHOR LENGTH : 17 FT ANCHOR SIZE : 5.50
SURFACE CHOKE SIZE : .75 IN BOTTOM CHOKE SIZE : .75
MAIN HOLE SIZE : 7.875 IN TOOL JOINT SIZE : 4.5 XH

BLOW COMMENT #1 : INITIAL FLOW-STRONG BLOW OFF BOTTOM OF BUCKET IN
BLOW COMMENT #2 : 13 MINUTES.
BLOW COMMENT #3 : FINAL FLOW-STRONG BLOW OFF BOTTOM OF BUCKET IN
BLOW COMMENT #4 : 6 MINUTES.

RECOVERED : 70 FT OF: HEAVY OIL CUT MUD
RECOVERED : 0 FT OF: 45% MUD-5% WATER-35% OIL-15% GAS
RECOVERED : 60 FT OF: SLIGHTLY MUD CUT OIL
RECOVERED : 0 FT OF: 5% MUD-95% OIL

Total Barrels Fluid = 0.61
Total Fluid Prod Rate = 11.73 BFPD
Indicated Oil Rate = 7.36 BOPD
Indicated Wtr Rate = 3.11 BWPD
Corrected Oil Rate = 7.80 BOPD
Corrected Wtr Rate = 3.30 BWPD

REMARK 1 : TIGHT HOLE.
REMARK 2 : RECOVERED 790 FEET OF GAS ABOVE FLUID.
REMARK 3 :
REMARK 4 :

SET PACKER(S) : 9:25 PM TIME STARTED OFF BOTTOM : 12:55 AM
WELL TEMPERATURE : 117
INITIAL HYDROSTATIC PRESSURE (A) 1934
INITIAL FLOW PERIOD MIN: 30 (B) 52 PSI TO (C) : 52
INITIAL CLOSED IN PERIOD MIN: 60 (D) 230
FINAL FLOW PERIOD MIN: 45 (E) 77 PSI TO (F) : 84
FINAL CLOSED IN PERIOD MIN: 75 (G) 233
FINAL HYDROSTATIC PRESSURE (H) 1919

COMPANY : MIDDLESEX OIL COMPANY
WELL : #1-30
GAUGE # : 1566
DATE : 22/12/86

FIELD : BEESLEY
JOB # : 12313
DEPTH : 3952
TEST : TIGHT HOLE.

DATA No.	REAL TIME HR:MN:SS	ELAPSE TIME DELTA HOURS	PRESSURE PSIG	TEMP DEG F	DELTA P Pi-P(i-1)
1	9:25:0	0.000	52.000	117.00	0.000
2	9:29:59	0.083	52.000	117.00	0.000
3	9:35:0	0.167	52.000	117.00	0.000
4	9:40:0	0.250	52.000	117.00	0.000
5	9:44:59	0.333	52.000	117.00	0.000
6	9:50:0	0.417	52.000	117.00	0.000
7	9:55:0	0.500	52.000	117.00	0.000
8	9:58:0	0.550	53.000	117.00	1.000
9	10:01:0	0.600	66.000	117.00	13.000
10	10:04:0	0.650	97.000	117.00	31.000
11	10:07:0	0.700	129.000	117.00	32.000
12	10:10:0	0.750	150.000	117.00	21.000
13	10:13:0	0.800	167.000	117.00	17.000
14	10:16:0	0.850	179.000	117.00	12.000
15	10:19:0	0.900	190.000	117.00	11.000
16	10:22:0	0.950	198.000	117.00	8.000
17	10:25:0	1.000	203.000	117.00	5.000
18	10:28:0	1.050	211.000	117.00	8.000
19	10:31:0	1.100	216.000	117.00	5.000
20	10:34:0	1.150	220.000	117.00	4.000
21	10:37:0	1.200	223.000	117.00	3.000
22	10:40:0	1.250	225.000	117.00	2.000
23	10:43:0	1.300	226.000	117.00	1.000
24	10:46:0	1.350	227.000	117.00	1.000
25	10:49:0	1.400	228.000	117.00	1.000
26	10:52:0	1.450	229.000	117.00	1.000
27	10:55:0	1.500	230.000	117.00	1.000
28	10:56:0	1.517	77.000	117.00	-153.000
29	10:59:59	1.583	77.000	117.00	0.000
30	11:05:0	1.667	77.000	117.00	0.000
31	11:10:0	1.750	78.000	117.00	1.000
32	11:14:59	1.833	79.000	117.00	1.000
33	11:20:0	1.917	80.000	117.00	1.000
34	11:25:0	2.000	81.000	117.00	1.000
35	11:29:59	2.083	82.000	117.00	1.000
36	11:35:0	2.167	83.000	117.00	1.000
37	11:40:0	2.250	84.000	117.00	1.000
38	11:43:0	2.300	102.000	117.00	18.000
39	11:46:0	2.350	133.000	117.00	31.000
40	11:49:0	2.400	155.000	117.00	22.000
41	11:52:0	2.450	171.000	117.00	16.000
42	11:55:0	2.500	183.000	117.00	12.000
43	11:58:0	2.550	191.000	117.00	8.000
44	12:01:0	2.600	199.000	117.00	8.000
45	12:04:0	2.650	204.000	117.00	5.000
46	12:07:0	2.700	210.000	117.00	6.000
47	12:10:0	2.750	212.000	117.00	2.000
48	12:13:0	2.800	214.000	117.00	2.000
49	12:16:0	2.850	216.000	117.00	2.000
50	12:19:0	2.900	218.000	117.00	2.000
51	12:22:0	2.950	220.000	117.00	2.000
52	12:25:0	3.000	222.000	117.00	2.000

COMPANY : MIDDLESEX OIL COMPANY
WELL : #1-30
GAUGE # : 1565
DATE : 22/12/86

FIELD : BEESLEY
JOB # : 12313
DEPTH : 3952
TEST : TIGHT HOLE.

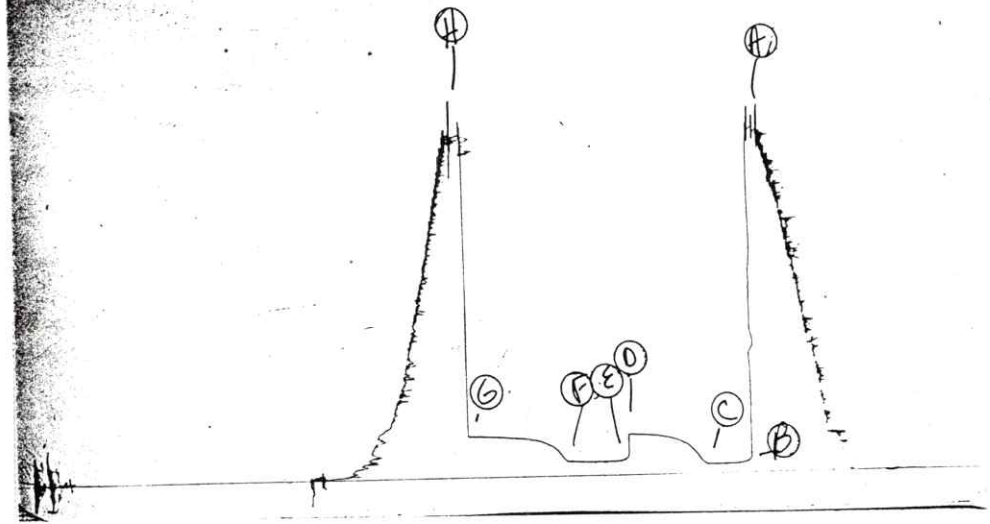
DATA No.	REAL TIME HR:MN:SS	ELAPSE TIME DELTA HOURS	PRESSURE PSIG	TEMP DEG F	DELTA P Pi-P(i-1)
53	12:28: 0	3.050	224.000	117.00	2.000
54	12:31: 0	3.100	225.000	117.00	1.000
55	12:34: 0	3.150	226.000	117.00	1.000
56	12:37: 0	3.200	227.000	117.00	1.000
57	12:40: 0	3.250	228.000	117.00	1.000
58	12:43: 0	3.300	229.000	117.00	1.000
59	12:46: 0	3.350	230.000	117.00	1.000
60	12:49: 0	3.400	231.000	117.00	1.000
61	12:52: 0	3.450	232.000	117.00	1.000
62	12:55: 0	3.500	233.000	117.00	1.000

WESTERN TESTERS INC

1366

Middlesex
DST 2

Kit # 12313
I



13629

Middlesex
DST 2

Kit # 12313
O

