

WESTERN TESTING CO. INC.  
SUBSURFACE PRESSURE SURVEY

DATE: 7/22/83 TICKET #1256  
 CUSTOMER: RAINS & WMSON OIL CO. INC. LEASE: EUNICE MCBROOM  
 WELL: 1 TEST: 1 GEOLOGIST: ENGELBRECHT  
 ELEVATION (KB): 1886 FORMATION: LANSING 30' ZONE  
 SECTION: 16 TOWNSHIP: 12S  
 RANGE: 14W COUNTY: RUSSELL STATE: KANSAS  
 GAUGE SN #2606 RANGE: 4150 CLOCK: 12

INTERVAL TEST FROM: 2940 FT TO: 2963 FT TOTAL DEPTH: 2963 FT  
 DEPTH OF SELECTIVE ZONE: FT  
 PACKER DEPTH: 2935 FT SIZE: 6 3/4 IN PACKER DEPTH: 2940 FT SIZE: 6 3/4 IN  
 PACKER DEPTH: FT SIZE: IN PACKER DEPTH: FT SIZE: IN

DRILLING CONTRACTOR: RAINS & WMSON  
 MUD TYPE: STARCH VISCOSITY: 36  
 WEIGHT: 9.7 WATER LOSS (CC): 9.2  
 CHLORIDES (P.P.M.): 46000  
 JARS - MAKE: NO SERIAL NUMBER:  
 DID WELL FLOW? NO REVERSED OUT? NO  
 DRILL COLLAR LENGTH: 210 FT I.D.: 2 1/4 IN  
 WEIGHT PIPE LENGTH: FT I.D.: IN  
 DRILL PIPE LENGTH: 2710 FT I.D.: 3.8 IN  
 TEST TOOL LENGTH: 20 FT TOOL SIZE: 5 1/2 OD IN  
 ANCHOR LENGTH: 23 FT SIZE: 5 1/2 OD IN  
 SURFACE CHOKE SIZE: 3/4 IN BOTTOM CHOKE SIZE: 3/4 IN  
 MAIN HOLE SIZE: 7 7/8 IN TOOL JOINT SIZE: 4 1/2 FH IN

BLOW: INITIAL FLOW PERIOD WEAK TO VERY  
 WEAK BLOW.  
 FINAL FLOW PERIOD VERY WEAK-STEADY  
 BLOW (1/4 INCH INTO WATER).

RECOVERED: 80 FT OF: GAS & OIL CUT MUD  
 RECOVERED: FT OF: 25% GAS; 15% OIL; 15% WATER; 45% MUD  
 RECOVERED: 60 FT OF: GAS & OIL CUT WATERY MUD  
 RECOVERED: FT OF: 25% GAS; 15% OIL; 30% WATER; 30% MUD  
 RECOVERED: 60 FT OF: SLIGHTLY GAS & OIL CUT WATERY MUD  
 RECOVERED: FT OF: 5% GAS; 5% OIL; 40% WATER; 50% MUD  
 RECOVERED: FT OF:  
 RECOVERED: FT OF:  
 RECOVERED: FT OF:

REMARKS: CHLORIDES 63000 PPM

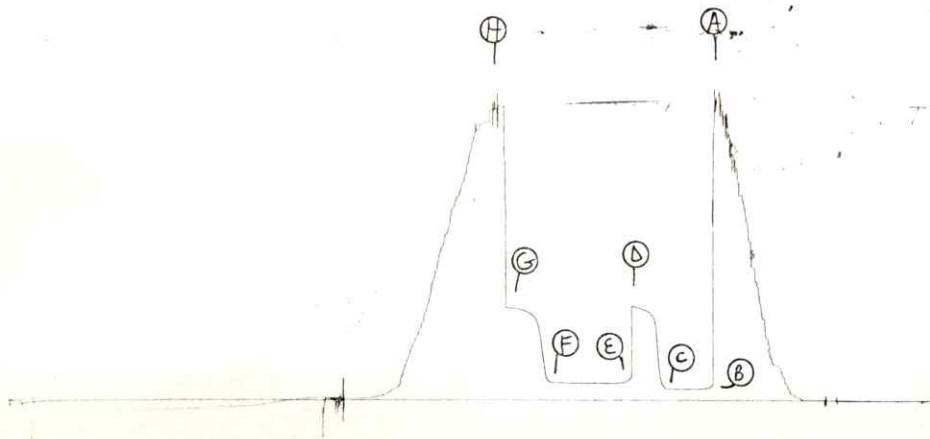
TIME SET PACKER(S): 8:40 PM TIME STARTED OFF BOTTOM: 11:10 PM  
 WELL TEMPERATURE: 108 °F  
 INITIAL HYDROSTATIC PRESSURE: (A) 1592 PSI  
 INITIAL FLOW PERIOD MIN: 30 (B) 59 PSI TO (C) 59 PSI  
 INITIAL CLOSED IN PERIOD MIN: 30 (D) 499 PSI  
 FINAL FLOW PERIOD MIN: 60 (E) 89 PSI TO (F) 95 PSI  
 FINAL CLOSED IN PERIOD MIN: 33 (G) 490 PSI  
 FINAL HYDROSTATIC PRESSURE (H) 1562 PSI



2606 DST#1

TKT # 1256

I



WESTERN TESTING CO. INC.  
SUBSURFACE PRESSURE SURVEY

DATE: 7/23/83  
CUSTOMER: RAINS & WMSON OIL CO. INC.  
WELL: 1  
ELEVATION (KB): 1886  
SECTION: 16  
RANGE: 14W  
GAUGE SN #2606

TICKET #1257  
LEASE: EUNICE MCBROOM  
GEOLOGIST: ENGELBRECHT  
FORMATION: LANSING 50' ZONE  
TOWNSHIP: 12S  
COUNTY: RUSSELL  
RANGE: 4150

STATE: KANSAS  
CLOCK: 12

INTERVAL TEST FROM: 2939 FT TO: 2980 FT TOTAL DEPTH: 2980 FT  
DEPTH OF SELECTIVE ZONE: FT  
PACKER DEPTH: 2934 FT SIZE: 6 3/4 IN PAKER DEPTH: 2939 FT SIZE: 6 3/4 IN  
PACKER DEPTH: FT SIZE: IN PAKER DEPTH: FT SIZE: IN

DRILLING CONTRACTOR: RAINS & WMSON  
MUD TYPE: STARCH VISCOSITY: 41  
WEIGHT: 9.8 WATER LOSS (CC): 9.4  
CHLORIDES (P.P.M.): 52000  
JARS - MAKE: NO SERIAL NUMBER:  
DID WELL FLOW? NO REVERSED OUT? NO  
DRILL COLLAR LENGTH: 210 FT I.D.: 2 1/4 IN  
WEIGHT PIPE LENGTH: FT I.D.: IN  
DRILL PIPE LENGTH: 2709 FT I.D.: 3.8 IN  
TEST TOOL LENGTH: 20 FT TOOL SIZE: 5 1/2 OD IN  
ANCHOR LENGTH: 41 FT SIZE: 5 1/2 OD IN  
SURFACE CHOKE SIZE: 3/4 IN BOTTOM CHOKE SIZE: 3/4 IN  
MAIN HOLE SIZE: 7 7/8 IN TOOL JOINT SIZE: 4 1/2 FH IN

BLOW: WEAK BLOW (1 1/2 INCH INTO WATER)  
STEADY THROUGHOUT BOTH FLOW PERIODS.

RECOVERED: 75 FT OF: GAS & OIL CUT MUD  
RECOVERED: FT OF: 10% OIL; 10% WATER; 50% GAS; 30% MUD  
RECOVERED: 180 FT OF: GAS & OIL CUT WATERY MUD  
RECOVERED: FT OF: 5% OIL; 50% WATER; 45% MUD  
RECOVERED: 295 FT OF: GAS & OIL CUT MUDDY WATER  
RECOVERED: FT OF: 5% OIL; 5% GAS; 10% MUD; 80% WATER  
RECOVERED: FT OF:  
RECOVERED: FT OF:  
RECOVERED: FT OF:

REMARKS:

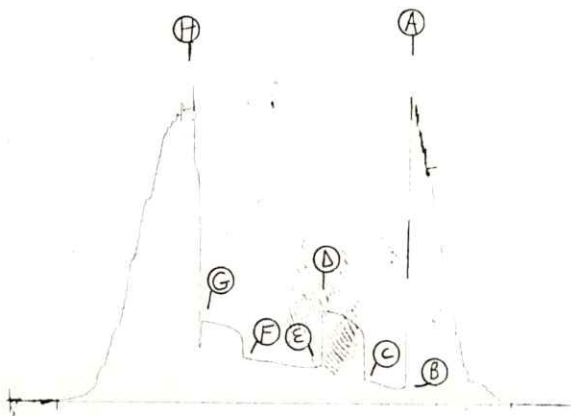
TIME SET PACKER(S): 10:30 AM TIME STARTED OFF BOTTOM: 1:00 PM  
WELL TEMPERATURE: 110 °F  
INITIAL HYDROSTATIC PRESSURE: (A) 1556 PSI  
INITIAL FLOW PERIOD MIN: 30 (B) 81 PSI TO (C) 128 PSI  
INITIAL CLOSED IN PERIOD MIN: 33 (D) 490 PSI  
FINAL FLOW PERIOD MIN: 60 (E) 190 PSI TO (F) 239 PSI  
FINAL CLOSED IN PERIOD MIN: 30 (G) 432 PSI  
FINAL HYDROSTATIC PRESSURE (H) 1556 PSI



#2606DSF#2

TKT # 1257

I



WESTERN TESTING CO. INC.  
SUBSURFACE PRESSURE SURVEY

DATE: 7/24/83  
CUSTOMER: RAINS & WMSON OIL CO. INC.  
WELL: 1 TEST: 3  
ELEVATION (KB): 1886 FORMATION: LANSING  
SECTION: 16 TOWNSHIP: 12S  
RANGE: 14W COUNTY: RUSSELL STATE: KANSAS  
GAUGE SN #2606 RANGE: 4150 CLOCK: 12

INTERVAL TEST FROM: 3028 FT TO: 3036 FT TOTAL DEPTH: 3036 FT  
DEPTH OF SELECTIVE ZONE: FT  
PACKER DEPTH: 3023 FT SIZE: 6 3/4 IN PACKER DEPTH: 3028 FT SIZE: 6 3/4 IN  
PACKER DEPTH: FT SIZE: IN PACKER DEPTH: FT SIZE: IN

DRILLING CONTRACTOR: RAINS & WMSON  
MUD TYPE: STARCH VISCOSITY: 41  
WEIGHT: 9.7 WATER LOSS (CC): 9.2  
CHLORIDES (P.P.M.): 52000  
JARS - MAKE: NO SERIAL NUMBER:  
DID WELL FLOW? NO REVERSED OUT? NO  
DRILL COLLAR LENGTH: 210 FT I.D.: 2 1/4 IN  
WEIGHT PIPE LENGTH: FT I.D.: IN  
DRILL PIPE LENGTH: 2798 FT I.D.: 3.8 IN  
TEST TOOL LENGTH: 20 FT TOOL SIZE: 5 1/2 OD IN  
ANCHOR LENGTH: 8 FT SIZE: 5 1/2 OD IN  
SURFACE CHOKE SIZE: 3/4 IN BOTTOM CHOKE SIZE: 3/4 IN  
MAIN HOLE SIZE: 7 7/8 IN TOOL JOINT SIZE: 4 1/2 FH IN

BLOW: INITIAL FLOW PERIOD WEAK STEADY  
BLOW.  
FINAL FLOW PERIOD VERY WEAK BLOW-  
DIED IN 50 MINUTES.

RECOVERED: 120 FT OF: SLIGHTLY OIL CUT WATERY MUD  
RECOVERED: FT OF: CHLORIDES 64000 PPM  
RECOVERED: FT OF:  
RECOVERED: FT OF:  
RECOVERED: FT OF:  
RECOVERED: FT OF:  
RECOVERED: FT OF:  
RECOVERED: FT OF:  
RECOVERED: FT OF:  
RECOVERED: FT OF:

REMARKS:

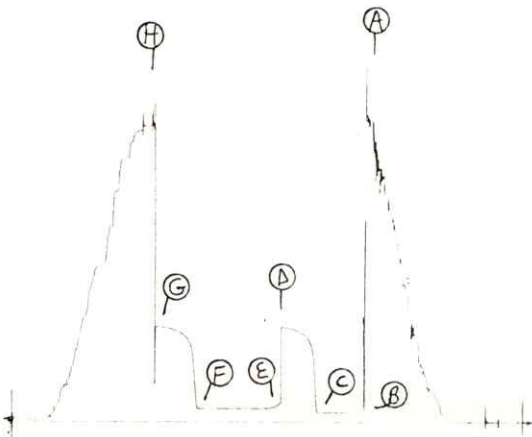
TIME SET PACKER(S): 4:35 AM TIME STARTED OFF BOTTOM: 7:05 AM  
WELL TEMPERATURE: 110 °F  
INITIAL HYDROSTATIC PRESSURE: (A) 1600 PSI  
INITIAL FLOW PERIOD MIN: 35 (B) 52 PSI TO (C) 52 PSI  
INITIAL CLOSED IN PERIOD MIN: 27 (D) 510 PSI  
FINAL FLOW PERIOD MIN: 60 (E) 73 PSI TO (F) 73 PSI  
FINAL CLOSED IN PERIOD MIN: 30 (G) 514 PSI  
FINAL HYDROSTATIC PRESSURE (H) 1586 PSI



2606 DST 3

TKT # 1258

I



WESTERN TESTING CO. INC.  
SUBSURFACE PRESSURE SURVEY

DATE: 7/25/83 TICKET #1259  
CUSTOMER: RAINS & WMSON OIL CO. INC. LEASE: EUNICE MCBROOM  
WELL: 1 TEST: 4 GEOLOGIST: ENGELBRECHT  
ELEVATION (KB): 1886 FORMATION: LANSING  
SECTION: 16 TOWNSHIP: 12S  
RANGE: 14W COUNTY: RUSSELL STATE: KANSAS  
GAUGE SN #2606 RANGE: 4150 CLOCK: 12

INTERVAL TEST FROM: 3093 FT TO: 3136 FT TOTAL DEPTH: 3136 FT  
DEPTH OF SELECTIVE ZONE: FT  
PACKER DEPTH: 3088 FT SIZE: 6 3/4 IN PACKER DEPTH: 3093 FT SIZE: 6 3/4 IN  
PACKER DEPTH: FT SIZE: IN PACKER DEPTH: FT SIZE: IN

DRILLING CONTRACTOR: RAINS & WMSON  
MUD TYPE: STARCH VISCOSITY: 45  
WEIGHT: 9.6 WATER LOSS (CC): 11.0  
CHLORIDES (P.P.M.): 52000  
JARS - MAKE: NO SERIAL NUMBER:  
DID WELL FLOW? NO REVERSED OUT? NO  
DRILL COLLAR LENGTH: 210 FT I.D.: 2 1/4 IN  
WEIGHT PIPE LENGTH: FT I.D.: IN  
DRILL PIPE LENGTH: 2863 FT I.D.: 3.8 IN  
TEST TOOL LENGTH: 20 FT TOOL SIZE: 5 1/2 OD IN  
ANCHOR LENGTH: 43 FT SIZE: 5 1/2 OD IN  
SURFACE CHOKE SIZE: 3/4 IN BOTTOM CHOKE SIZE: 3/4 IN  
MAIN HOLE SIZE: 7 7/8 IN TOOL JOINT SIZE: 4 1/2 FH IN

BLOW: WEAK (2 INCHES INTO WATER) BLOW ON  
BOTH FLOW PERIODS.

RECOVERED: 270 FT OF: GAS CUT MUDDY WATER  
RECOVERED: FT OF: CHLORIDES 56000 PPM  
RECOVERED: FT OF:  
RECOVERED: FT OF:  
RECOVERED: FT OF:  
RECOVERED: FT OF:  
RECOVERED: FT OF:  
RECOVERED: FT OF:  
RECOVERED: FT OF:  
RECOVERED: FT OF:

REMARKS:

TIME SET PACKER(S): 1:15 AM TIME STARTED OFF BOTTOM: 3:45 AM  
WELL TEMPERATURE: 115 °F  
INITIAL HYDROSTATIC PRESSURE: (A) 1666 PSI  
INITIAL FLOW PERIOD MIN: 30 (B) 60 PSI TO (C) 78 PSI  
INITIAL CLOSED IN PERIOD MIN: 33 (D) 613 PSI  
FINAL FLOW PERIOD MIN: 60 (E) 125 PSI TO (F) 140 PSI  
FINAL CLOSED IN PERIOD MIN: 36 (G) 574 PSI  
FINAL HYDROSTATIC PRESSURE (H) 1666 PSI



2606 DST #4

TKT # 1259

I

