

FORMATION TESTING SERVICES

SW SE NW

P.O. Box 518,
Hays, Kansas 67601

Hays
(913) 628-1115

Great Bend
(316) 792-6187

Test# 1
Lease Name: Dodson #1
Location: Sec. 29 Twp. 11 Rng. 24W
County Trego St. Ks
Date: 5/13/87
Elevation: 2513 KB
Tester: Steve Waggoner

Company: N.B. Co. / Damar Resources

Company Address: Box 506
Perussell, Ks 67665

Company Representative: Curtis Songpine
Contractor: Emphasis #7

Mud P.P.M. Cl⁻ Hydrostatic — P.S.I./ft.

Mud Weight 9.4 Viscosity 47 Water Loss 10.8

Total Depth: 3908

Anchor Length: 50'

Top Packer Depth: 3853

Bottom Packer Depth: 3858

Surface Choke: 1" Bottom Choke: 3/4

Drill Pipe Size: 4 1/2 X 11/4 Wt. Pipe Run: — I.D. —

Collars Run: — I.D. —

Main Hole Size: 7 7/8

Internal Rec# 13752 Depth: 3904

Blow: JFP: weak to strong -
bottom of bucket in
27 minutes

JFP: weak to strong
bottom of bucket in
36 minutes

Tool Open: 8:10 AM Remarks: —

External Rec# 13753 Depth: 3890

TEST RESULTS & RECOVERY

Interval Tested: 3858 - 3908

Zone Tested: hanging "A" "B" "C"

Initial Hydrostatic Mud: 2000 P.S.I.

Initial Flow Pressure 58 To 78 P.S.I.

Initial Shut-In Pressure 1252 P.S.I.

Final Flow Pressure 136 To 174 P.S.I.

Final Shut-In Pressure 1213 P.S.I.

Final Hydrostatic Mud 1942 P.S.I.

Initial Flow Period 30 Min.

Initial Shut-In 45 Min.

Final Flow Period 45 Min.

Final Shut-In 45 Min.

260 Feet Total Fluid Recovery _____ Feet Gas In Pipe

Recovered 260 Feet muddy water _____ %Gas _____ %Oil _____ %H₂O _____ %Mud

Recovered _____ Feet _____ %Gas _____ %Oil _____ %H₂O _____ %Mud

Recovered _____ Feet _____ %Gas _____ %Oil _____ %H₂O _____ %Mud

Recovered _____ Feet _____ %Gas _____ %Oil _____ %H₂O _____ %Mud

Recovered _____ Feet _____ %Gas _____ %Oil _____ %H₂O _____ %Mud

Recovered Fluid Properties: 31K P.P.M. Cl⁻ Gravity: _____ °A.P.I. Resistivity: _____ Ω/m² BHT 115 °F

Extra Equipment: none

Price of Job: _____

Approved By: [Signature]

Our Representative: Steve Waggoner

Ticket No 1367

Formation Testing Services Inc. shall not be liable for damages of any kind to the property or personnel of the one for whom a test is made or for any loss suffered or sustained directly or indirectly through the use of its equipment, of its statements or opinion concerning the results of any test. Tools lost or damaged in the hole shall be paid at cost by the party for whom the test is made.

FORMATION TESTING SERVICES

P.O.Box 518,
Hays, Kansas 67601

Hays
(913) 628-1115

Great Bend
(316) 792-6187

Company: NB Co / Damar Resources

Company Address: Box 506
Russell, Ko

Company Representative: Curtis Longpine

Contractor: Emphasis #7

Test# 2

Lease Name: Dodson #1

Location: Sec. 29 Twp. 11 Rng. 24w

County Irego St. Ko

Date: 5/14/87

Elevation: 2513 KB

Tester: Steve Waggoner

Mud P.P.M.Cl Hydrostatic _____ P.S.I./ft.

Mud Weight 9.2 Viscosity 45 Water Loss 10.

Total Depth: 3958

Anchor Length: 53

Top Packer Depth: 3900

Bottom Packer Depth: 3905

Surface Choke: 1" Bottom Choke: 3/4"

Drill Pipe Size: 4 1/2 X H Wt. Pipe Run: _____ I.D.: _____

Collars Run: _____ I.D.: _____

Main Hole Size: 7 7/8

Internal Rec# 13753 Depth: 3953

Blow: JFP; weak to strong
bottom of bucket in 20 min
JFP: strong blow
throughout

Tool Open: 1:20 AM Remarks: _____

External Rec# 13752 Depth: 3940

TEST RESULTS & RECOVERY

Interval Tested: 3905-3958

Zone Tested: Lansing D, E F

Initial Hydrostatic Mud: 2079 P.S.I.

Initial Flow Pressure 68 To 78 P.S.I.

Initial Shut-In Pressure 1310 P.S.I.

Final Flow Pressure 107 To 155 P.S.I.

Final Shut-In Pressure 1310 P.S.I.

Final Hydrostatic Mud 2040 P.S.I.

Initial Flow Period 30 Min.

Initial Shut-In 45 Min.

Final Flow Period 45 Min.

Final Shut-In 45 Min.

210 Feet Total Fluid Recovery _____ Feet Gas In Pipe

Recovered 210 Feet Muddy water - _____ %Gas _____ %Oil _____ %H₂O _____ %Mud

Recovered _____ Feet no show - _____ %Gas _____ %Oil _____ %H₂O _____ %Mud

Recovered _____ Feet _____ - _____ %Gas _____ %Oil _____ %H₂O _____ %Mud

Recovered _____ Feet _____ - _____ %Gas _____ %Oil _____ %H₂O _____ %Mud

Recovered _____ Feet _____ - _____ %Gas _____ %Oil _____ %H₂O _____ %Mud

Recovered Fluid Properties: SLK P.P.M.Cl⁻ Gravity: _____ °A.P.I. Resistivity: _____ Ω/m² BHT 116 °F

Extra Equipment: none

Price of Job: _____

Approved By _____

Steve Waggoner

Our Representative _____

Ticket No 1368 thank you

Formation Testing Services Inc. shall not be liable for damages of any kind to the property or personnel of the one for whom a test is made or for any loss suffered or sustained directly or indirectly through the use of its equipment, of its statements or opinion concerning the results of any test. Tools lost or damaged in the hole shall be paid at cost by the party for whom the test is made.

FORMATION TESTING SERVICES

P.O. Box 518,
Hays, Kansas 67601

Hays
(913) 628-1115

Great Bend
(316) 792-6187

Test # 3

Company: NB Co / Daman Resources

Lease Name: Dadson 1

Company Address: Box 506
Russell Co

Location: Sec. 29 Twp. 11 Rng. 24

County Jrego St. KO

Date: 5/14/87

Company Representative: Emphasies Curt Longene

Elevation: 2513 LB

Contractor: Emphasies #17

Tester: Steve

Mud P.P.M.CI Hydrostatic P.S.I./ft.

Mud Weight 9.2 Viscosity 40 Water Loss 10.0

Total Depth: 4040

Anchor Length: 53

Top Packer Depth: 3982

Bottom Packer Depth: 3987

Surface Choke: 1" Bottom Choke: 3/4"

Drill Pipe Size: 4.5 XH Wt. Pipe Run: — I.D. —

Collars Run: — I.D. —

Main Hole Size: 7 7/8

Internal Rec# 13753 Depth: 4037

Blow: Very weak blow

died in 9 minutes

FFP: no blow - Flush

tool - no help

Tool Open: 8:05 p.m Remarks: —

External Rec# 13753 Depth: 4020

TEST RESULTS & RECOVERY

Interval Tested: 3987-4040

Zone Tested: hanging H, I

Initial Hydrostatic Mud: 2119 P.S.I.

Initial Flow Pressure 48 To 48 P.S.I.

Initial Shut-In Pressure 184 P.S.I.

Final Flow Pressure — To — P.S.I.

Final Shut-In Pressure — P.S.I.

Final Hydrostatic Mud 2089 P.S.I.

10 Feet Total Fluid Recovery

— Feet Gas In Pipe

Recovered 10 Feet mud - no show %Gas — %Oil — %H₂O — %Mud —

Recovered — Feet — %Gas — %Oil — %H₂O — %Mud —

Recovered — Feet — %Gas — %Oil — %H₂O — %Mud —

Recovered — Feet — %Gas — %Oil — %H₂O — %Mud —

Recovered — Feet — %Gas — %Oil — %H₂O — %Mud —

Recovered — Feet — %Gas — %Oil — %H₂O — %Mud —

Recovered Fluid Properties: — P.P.M.CI — Gravity: — °A.P.I. Resistivity: — Ω/m² BHT 117 °F

Extra Equipment: none

Price of Job: —

Approved By —

Our Representative Steve Longene

Ticket No 1369

Formation Testing Services Inc. shall not be liable for damages of any kind to the property or personnel of the one for whom a test is made or for any loss suffered or sustained directly or indirectly through the use of its equipment, of its statements or opinion concerning the results of any test. Tools lost or damaged in the hole shall be paid at cost by the party for whom the test is made.

FORMATION TESTING SERVICES

P.O.Box 518,
Hays, Kansas 67601

Hays
(913) 628-1115

Great Bend
(316) 792-6187

Company: NB Co / Dana Resources

Company Address: Box 506
Russell KS

Company Representative: Curt Longpine

Contractor: Emphasis #7

Mud P.P.M.Cl Hydrostatic P.S.I./ft.

Mud Weight 9.3 Viscosity 40 Water Loss 9.8

Total Depth: 4110

Anchor Length: 73

Top Packer Depth: 3932

Bottom Packer Depth: 3937

Surface Choke: 1 Bottom Choke: 3/4

Drill Pipe Size: 4 1/2 x 4 Wt. Pipe Run: — I.D. —

Collars Run: — I.D. —

Main Hole Size: 7.875

Internal Rec# 13753 Depth: 4107

Test# 4

Lease Name: Dodson #1

Location: Sec. _____ Twp. _____ Rng. _____

County Trego St. KS

Date: 5/15/87

Elevation: _____

Tester: Steve

Blow: IFP: very weak
died in 12 minutes
FFP: flush tool - no
help

Tool Open: 2:40 p.m Remarks: _____

External Rec# 13752 Depth: 8089

TEST RESULTS & RECOVERY

Interval Tested: 3937-4110

Zone Tested: housing JKL

Initial Hydrostatic Mud: 2218 P.S.I.

Initial Flow Pressure 58 To 58 P.S.I.

Initial Shut-In Pressure 97 P.S.I.

Final Flow Pressure _____ To _____ P.S.I.

Final Shut-In Pressure _____ P.S.I.

Final Hydrostatic Mud 2197 P.S.I.

3 Feet Total Fluid Recovery _____ Feet Gas In Pipe

Recovered 3 Feet mud no show %Gas _____ %Oil _____ %H₂O _____ %Mud _____

Recovered _____ Feet _____ %Gas _____ %Oil _____ %H₂O _____ %Mud _____

Recovered _____ Feet _____ %Gas _____ %Oil _____ %H₂O _____ %Mud _____

Recovered _____ Feet _____ %Gas _____ %Oil _____ %H₂O _____ %Mud _____

Recovered _____ Feet _____ %Gas _____ %Oil _____ %H₂O _____ %Mud _____

Recovered Fluid Properties: _____ P.P.M.Cl _____ Gravity: _____ °A.P.I. Resistivity: _____ Ω/m² BHT 118°F

Extra Equipment: none

Price of Job: _____

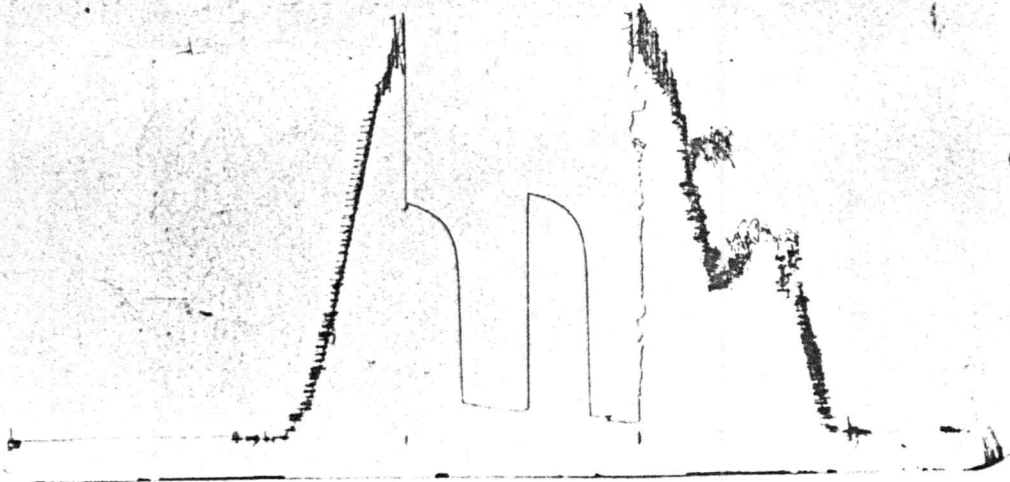
Approved By M.R. Huffner (Emphasis Rep)

Our Representative Steve Waggoner

Ticket No 1370

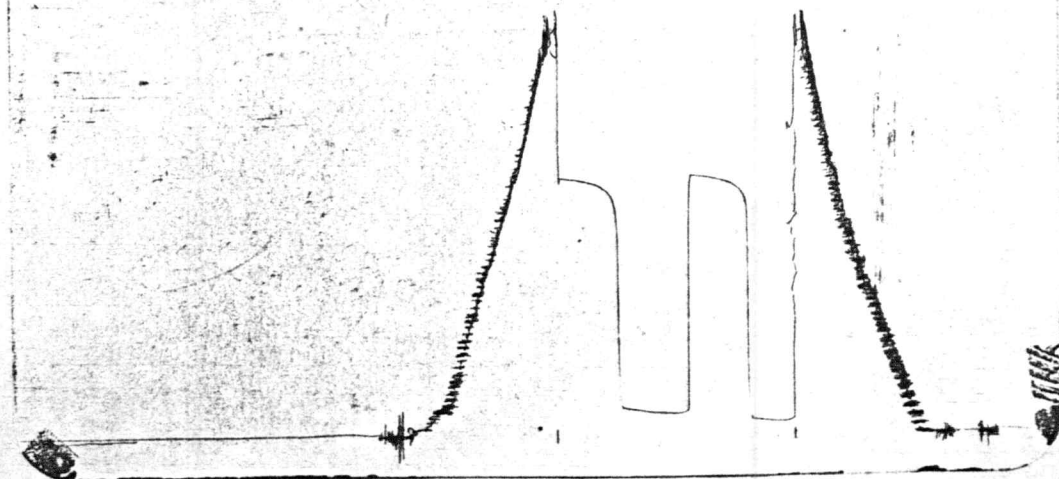
Formation Testing Services Inc. shall not be liable for damages of any kind to the property or personnel of the one for whom a test is made or for any loss suffered or sustained directly or indirectly through the use of its equipment, of its statements or opinion concerning the results of any test. Tools lost or damaged in the hole shall be paid at cost by the party for whom the test is made.

13753
DST #1

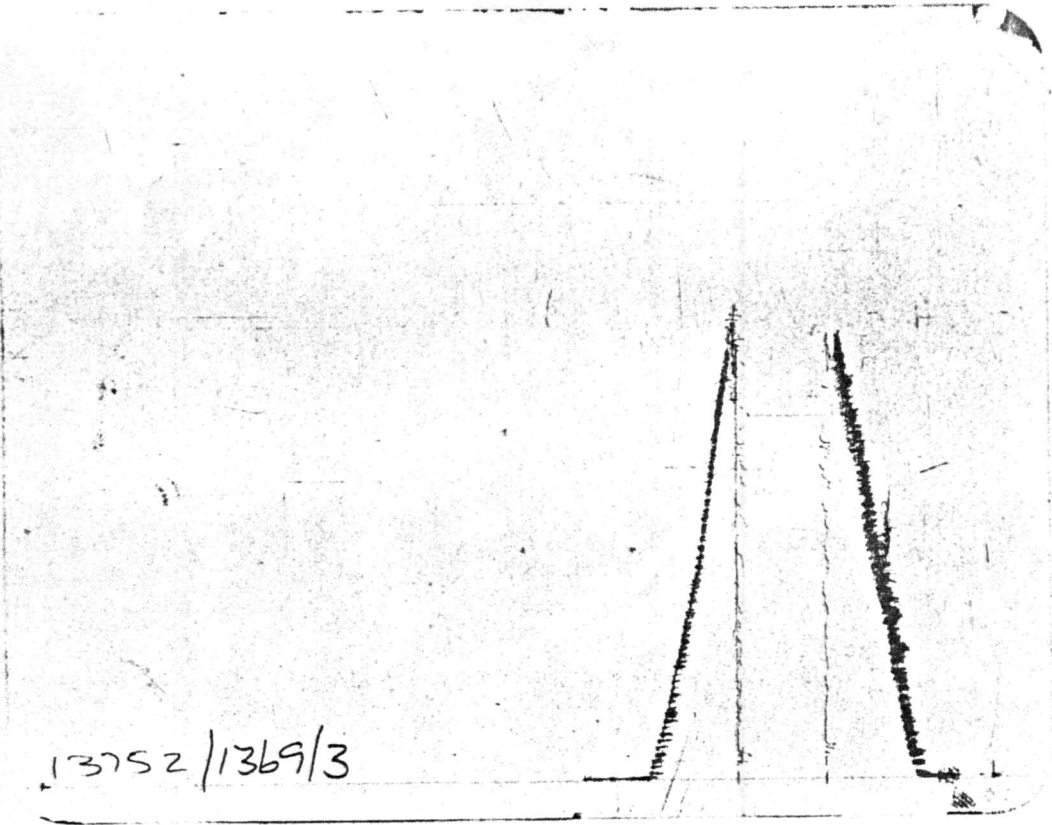


D.S.T. #1

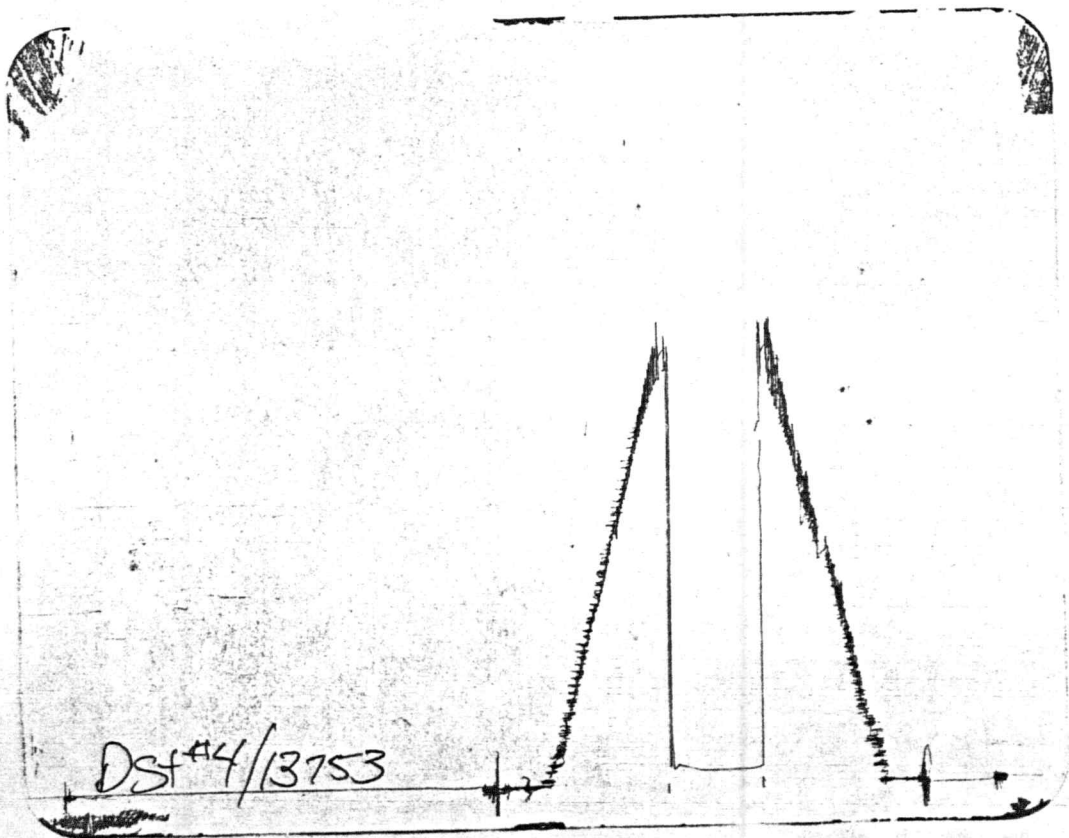
13753
2/1368



D.S.T. #2



D.S.T. #3



D.S.T. #4