

**Well Name:** Stephen "R" #1  
**Company:** Pickrell Drilling Company Inc.  
**Location:** 30-11s-34w  
Logan County Kansas  
**Date:** 4-20-99

TRILOBITE TESTING L.L.C.

OPERATOR : Pickrell Drilling  
 WELL NAME: Stephen "R" #1  
 LOCATION : 30-11s-34w Logan co KS  
 INTERVAL : 4346.00 To 4390.00 ft

DATE 4-15-99

KB 3197.00 ft TICKET NO: 11485 DST #1  
 GR 3192.00 ft FORMATION: Lansing K  
 TD 4390.00 ft TEST TYPE: CONV

RECORDER DATA

Mins		Field	1	2	3	4	TIME DATA-----
PF 30	Rec.	11085	11085	13547			PF Fr. 2225 to 2255 hr
SI 60	Range(Psi )	4300.0	4300.0	4200.0	0.0	0.0	IS Fr. 2255 to 2355 hr
SF 30	Clock(hrs)	12	12	12			SF Fr. 2355 to 0025 hr
FS 30	Depth(ft )	4349.0	4349.0	4252.0	0.0	0.0	FS Fr. 0025 to 0055 hr

	Field	1	2	3	4	
A. Init Hydro	2079.0	2077.0	0.0	0.0	0.0	T STARTED 2030 hr
B. First Flow	44.0	60.0	0.0	0.0	0.0	T ON BOTM 2220 hr
B1. Final Flow	44.0	56.0	0.0	0.0	0.0	T OPEN 2225 hr
C. In Shut-in	1354.0	1354.0	0.0	0.0	0.0	T PULLED 0022 hr
D. Init Flow	44.0	61.0	0.0	0.0	0.0	T OUT 0410 hr
E. Final Flow	44.0	64.0	0.0	0.0	0.0	
F. Fl Shut-in	1180.0	1196.0	0.0	0.0	0.0	TOOL DATA-----
G. Final Hydro	2058.0	2068.0	0.0	0.0	0.0	Tool Wt. 2200.00 lbs
Inside/Outside	0	0	I			Wt Set On Packer 20000.00 lbs
						Wt Pulled Loose 65000.00 lbs
						Initial Str Wt 59000.00 lbs
						Unseated Str Wt 59000.00 lbs
						Bot Choke 0.75 in
						Hole Size 7.88 in
						D Col. ID 2.25 in
						D. Pipe ID 3.80 in
						D.C. Length 180.00 ft
						D.P. Length 4146.00 ft

RECOVERY

Tot Fluid 10.00 ft of 10.00 ft in DC and 0.00 ft in DP  
 10.00 ft of Slight oil cut mud 1% oil 99% mud  
 0.00 ft of  
 0.00 ft of  
 0.00 ft of  
 0.00 ft of  
 0.00 ft of  
 0.00 ft of  
 0.00 ft of

SALINITY 0.00 P.P.M. A.P.I. Gravity 0.00

BLOW DESCRIPTION

Initial Flow:  
 Weak blow throughout 1/4" blow  
 Final Flow:  
 No blow flushed tool

MUD DATA-----

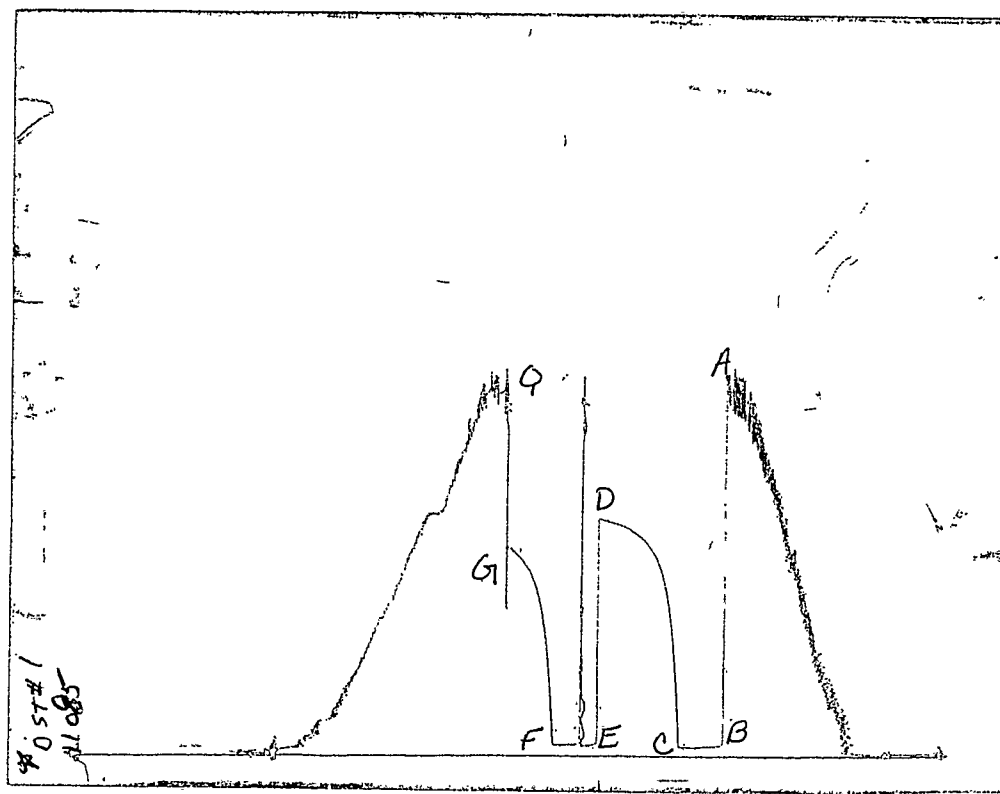
Mud Type	Chemical
Weight	9.20 lb/c
Vis.	50.00 S/L
W.L.	10.40 in3
F.C.	0.00 in
Mud Drop	

Amt. of fill	0.00 ft
Btm. H. Temp.	114.00 F
Hole Condition	
% Porosity	0.00
Packer Size	6.75 in
No. of Packers	2
Cushion Amt.	0.00
Cushion Type	
Reversed Out	
Tool Chased	
Tester	Ray Schwager
Co. Rep.	Bill Klaver
Contr.	Pickrell
Rig #	10
Unit #	
Pump T.	

SAMPLES:  
 SENT TO:

Test Successful: Y

CHART PAGE



This is a photocopy of the actual AK-1 recorder chart

TRILOBITE TESTING L.L.C.

OPERATOR : Pickrell Drilling

DATE 4-17-99

WELL NAME: Stephen "R" #1

KB 3197.00 ft

TICKET NO: 11486 DST #2

LOCATION : 30-11s-34w Logan co KS

GR 3192.00 ft

FORMATION: Marmaton

INTERVAL : 4446.00 To 4530.00 ft

TD 4530.00 ft

TEST TYPE: CONV

RECORDER DATA

Mins	Field	1	2	3	4	TIME DATA-----
PF 30 Rec.	11085	11085	13547			PF Fr. 0500 to 0530 hr
SI 60 Range (Psi )	4300.0	4300.0	4200.0	0.0	0.0	IS Fr. 0530 to 0630 hr
SF 55 Clock (hrs)	12	12	12			SF Fr. 0630 to 0725 hr
FS 30 Depth (ft )	4522.0	4522.0	4525.0	0.0	0.0	FS Fr. 0725 to 0755 hr

	Field	1	2	3	4	
A. Init Hydro	0.0	0.0	0.0	0.0	0.0	T STARTED 0230 hr
B. First Flow	0.0	0.0	0.0	0.0	0.0	T ON BOTM 0455 hr
B1. Final Flow	0.0	0.0	0.0	0.0	0.0	T OPEN 0500 hr
C. In Shut-in	0.0	0.0	0.0	0.0	0.0	T PULLED 0755 hr
D. Init Flow	0.0	0.0	0.0	0.0	0.0	T OUT 1000 hr
E. Final Flow	0.0	0.0	0.0	0.0	0.0	
F. Fl Shut-in	0.0	0.0	0.0	0.0	0.0	
G. Final Hydro	0.0	0.0	0.0	0.0	0.0	TOOL DATA-----
Inside/Outside	O	O	I			Tool Wt. 2200.00 lbs
						Wt Set On Packer 2000.00 lbs
						Wt Pulled Loose 70000.00 lbs
						Initial Str Wt 60000.00 lbs
						Unseated Str Wt 60000.00 lbs
						Bot Choke 0.75 in
						Hole Size 7.88 in
						D Col. ID 2.25 in
						D. Pipe ID 3.80 in
						D.C. Length 180.00 ft
						D.P. Length 4246.00 ft

RECOVERY

Tot Fluid 0.00 ft of 0.00 ft in DC and 0.00 ft in DP  
 0.00 ft of  
 0.00 ft of  
 0.00 ft of  
 0.00 ft of  
 0.00 ft of  
 0.00 ft of  
 0.00 ft of

SALINITY 0.00 P.P.M. A.P.I. Gravity 0.00

MUD DATA-----

Mud Type	Chemical
Weight	9.10 lb/cf
Vis.	42.00 S/L
W.L.	8.80 in3
F.C.	0.00 in
Mud Drop	

BLOW DESCRIPTION

Initial Flow:  
 Weak blow throughout 1/4" blow  
 Final Flow:  
 No blow flushed tool

Air line on rig broke, had to run  
 55 minute on second floor, could not  
 turn tool, float left in collar on  
 test

Amt. of fill	0.00 ft
Btm. H. Temp.	117.00 F
Hole Condition	
% Porosity	0.00
Packer Size	6.75 in
No. of Packers	2
Cushion Amt.	0.00

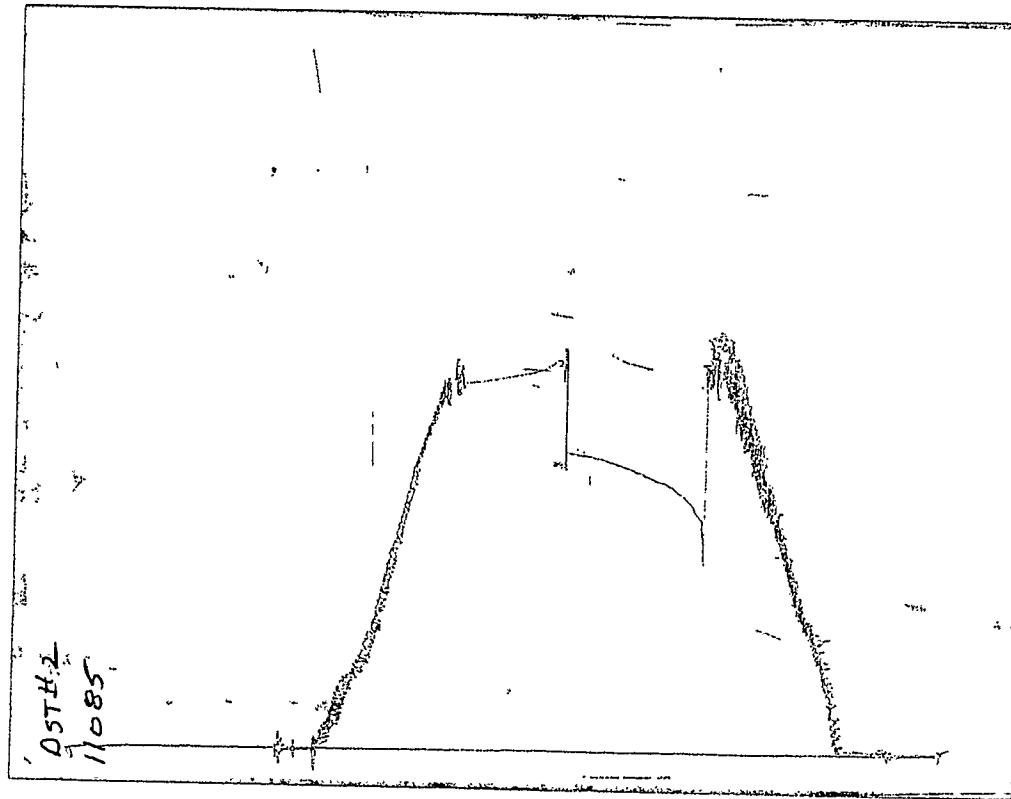
SAMPLES:

SENT TO:

Reversed Out  
 Tool Chased  
 Tester Ray Schwager  
 Co. Rep. Bill Klaver  
 Contr. Pickrell  
 Rig # 10  
 Unit #  
 Pump T.

Test Successful: Y

CHART PAGE



This is a photocopy of the actual AK-1 recorder chart

TRILOBITE TESTING L.L.C.

OPERATOR : Pickrell Drilling  
 WELL NAME: Stephen "R" #1  
 LOCATION : 30-11s-34w Logan co KS  
 INTERVAL : 4446.00 To 4530.00 ft

DATE 4-17-99  
 KB 3197.00 ft TICKET NO: 11487 DST #3  
 GR 3192.00 ft FORMATION: Marmaton  
 TD 4530.00 ft TEST TYPE: CONV

RECORDER DATA

Mins	Field	1	2	3	4	TIME DATA-----
PF 30 Rec.	11085	11085	13547			PF Fr. 1150 to 1220 hr
SI 60 Range (Psi )	4300.0	4300.0	4200.0	0.0	0.0	IS Fr. 1220 to 1320 hr
SF 30 Clock (hrs)	12	12	12			SF Fr. 1320 to 1350 hr
FS 30 Depth(ft )	4522.0	4522.0	4525.0	0.0	0.0	FS Fr. 1350 to 1420 hr

	Field	1	2	3	4	
A. Init Hydro	2122.0	2120.0	0.0	0.0	0.0	T STARTED 1020 hr
B. First Flow	88.0	80.0	0.0	0.0	0.0	T ON BOTM 1145 hr
B1. Final Flow	88.0	80.0	0.0	0.0	0.0	T OPEN 1150 hr
C. In Shut-in	264.0	264.0	0.0	0.0	0.0	T PULLED 1420 hr
D. Init Flow	88.0	80.0	0.0	0.0	0.0	T OUT 1630 hr
E. Final Flow	88.0	80.0	0.0	0.0	0.0	
F. Fl Shut-in	99.0	103.0	0.0	0.0	0.0	TOOL DATA-----
G. Final Hydro	2090.0	2093.0	0.0	0.0	0.0	Tool Wt. 2200.00 lbs
Inside/Outside	0	0	I			Wt Set On Packer 20000.00 lbs
						Wt Pulled Loose 70000.00 lbs
						Initial Str Wt 60000.00 lbs
						Unseated Str Wt 60000.00 lbs
						Bot Choke 0.75 in
						Hole Size 7.88 in
						D Col. ID 2.25 in
						D. Pipe ID 3.80 in
						D.C. Length 180.00 ft
						D.P. Length 4246.00 ft

RECOVERY

Tot Fluid 5.00 ft of 5.00 ft in DC and 0.00 ft in DP  
 5.00 ft of Mud  
 0.00 ft of  
 0.00 ft of  
 0.00 ft of  
 0.00 ft of  
 0.00 ft of  
 0.00 ft of  
 0.00 ft of

SALINITY 0.00 P.P.M. A.P.I. Gravity 0.00

BLOW DESCRIPTION

Initial Flow:  
 Weak blow throughout 1/2" to 3/4"  
 blow  
 Final Flow:  
 No blow flushed tool

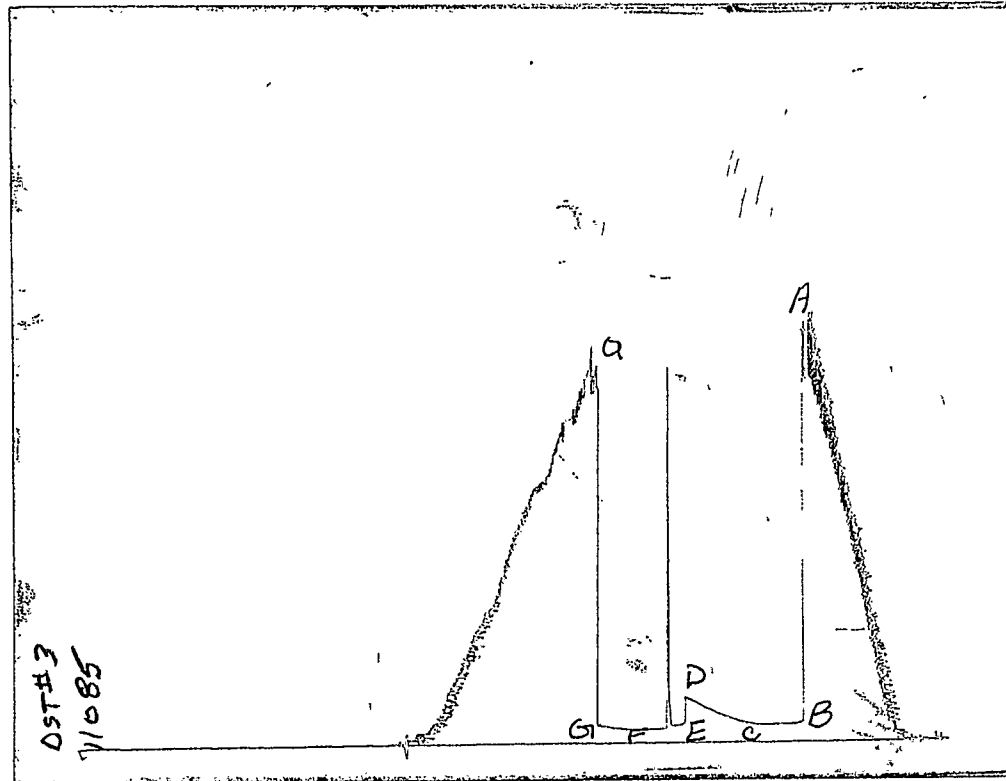
SAMPLES:  
 SENT TO:

MUD DATA-----

Mud Type	Chemical
Weight	9.10 lb/c
Vis.	42.00 S/L
W.L.	8.80 in3
F.C.	0.00 in
Mud Drop	
Amt. of fill	0.00 ft
Btm. H. Temp.	117.00 F
Hole Condition	
% Porosity	0.00
Packer Size	6.75 in
No. of Packers	2
Cushion Amt.	0.00
Cushion Type	
Reversed Out	
Tool Chased	
Tester	Ray Schwager
Co. Rep.	Bill Klaver
Contr.	Pickrell
Rig #	10
Unit #	
Pump T.	

Test Successful: Y

CHART PAGE



This is a photocopy of the actual AK-1 recorder chart

TRILOBITE TESTING L.L.C.

OPERATOR : Pickrell Drilling

DATE 4-18-99

WELL NAME: Stephen "R" #1

KB 3197.00 ft TICKET NO: 11488 DST #4

LOCATION : 30-11s-34w Logan co KS

GR 3192.00 ft FORMATION: Johnson

INTERVAL : 4669.00 To 4740.00 ft

TD 4740.00 ft TEST TYPE: CONV

RECORDER DATA

Mins	Field	1	2	3	4	TIME DATA-----
PF 30 Rec.	11085	11085	13547			PF Fr. 2005 to 2035 hr
SI 60 Range(Psi )	4300.0	4300.0	4200.0	0.0	0.0	IS Fr. 2035 to 2135 hr
SF 90 Clock(hrs)	12	12	12			SF Fr. 2135 to 2305 hr
FS 90 Depth(ft )	4673.0	4673.0	4676.0	0.0	0.0	FS Fr. 2305 to 0035 hr

	Field	1	2	3	4	
A. Init Hydro	2230.0	2235.0	0.0	0.0	0.0	T STARTED 1810 hr
B. First Flow	209.0	234.0	0.0	0.0	0.0	T ON BOTM 2000 hr
B1. Final Flow	407.0	426.0	0.0	0.0	0.0	T OPEN 2005 hr
C. In Shut-in	1050.0	1043.0	0.0	0.0	0.0	T PULLED 0035 hr
D. Init Flow	462.0	478.0	0.0	0.0	0.0	T OUT 0400 hr
E. Final Flow	778.0	784.0	0.0	0.0	0.0	
F. Fl Shut-in	1039.0	1043.0	0.0	0.0	0.0	
G. Final Hydro	2476.0	2200.0	0.0	0.0	0.0	TOOL DATA-----
Inside/Outside	0	0	I			Tool Wt. 2200.00 lbs
						Wt Set On Packer 20000.00 lbs
						Wt Pulled Loose 96000.00 lbs
						Initial Str Wt 66000.00 lbs
						Unseated Str Wt 76000.00 lbs
						Bot Choke 0.75 in
						Hole Size 7.88 in
						D Col. ID 2.25 in
						D. Pipe ID 3.80 in
						D.C. Length 180.00 ft
						D.P. Length 4469.00 ft

RECOVERY

Tot Fluid 1650.00 ft of 180.00 ft in DC and 1470.00 ft in DP  
 270.00 ft of Muddy water 85% water 15% mud  
 1380.00 ft of Water  
 0.00 ft of  
 0.00 ft of  
 0.00 ft of  
 0.00 ft of  
 0.00 ft of  
 0.00 ft of

SALINITY 50000.00 P.P.M. A.P.I. Gravity 0.00

BLOW DESCRIPTION

Initial Flow:  
 Weak building to a strong blow in  
 3 mins.  
 Final Flow:  
 Weak building to a strong blow in  
 7 mins.

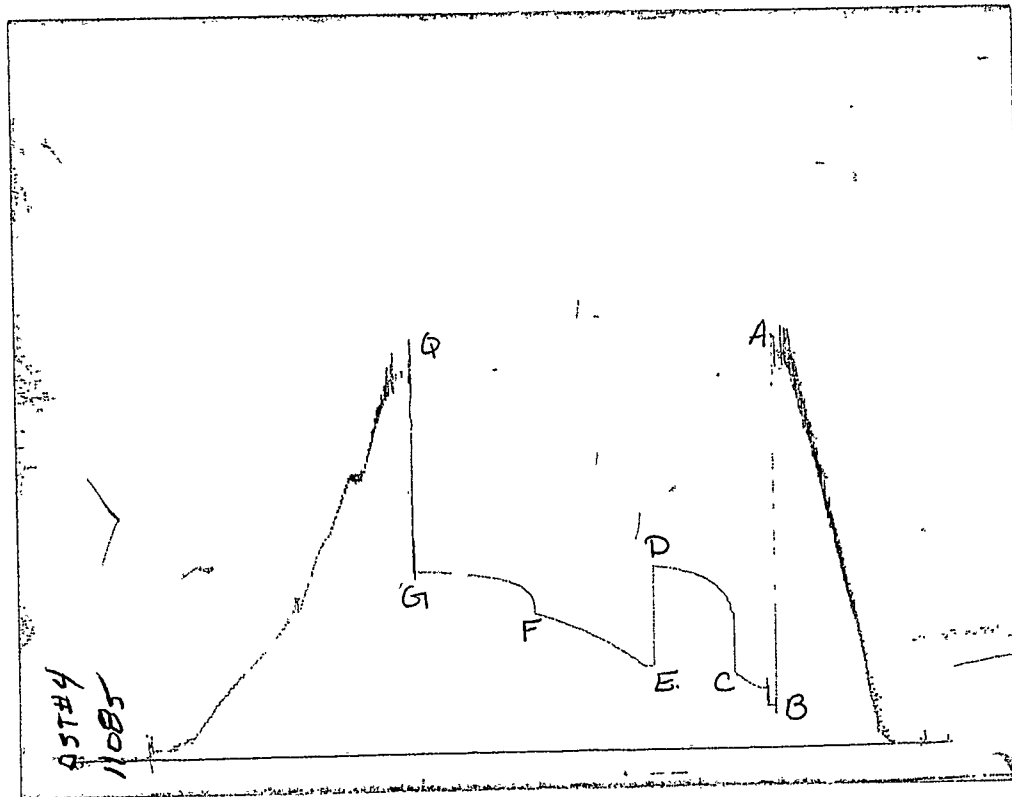
SAMPLES:  
 SENT TO:

MUD DATA-----

Mud Type	Chemical
Weight	9.40 lb/cf
Vis.	50.00 S/L
W.L.	12.00 in3
F.C.	0.00 in
Mud Drop	
Amt. of fill	0.00 ft
Btm. H. Temp.	128.00 F
Hole Condition	
% Porosity	0.00
Packer Size	6.75 in
No. of Packers	2
Cushion Amt.	0.00
Cushion Type	
Reversed Out	
Tool Chased	
Tester	Ray Schwager
Co. Rep.	Bill Klaver
Contr.	Pickrell
Rig #	10
Unit #	
Pump T.	

Test Successful: Y

CHART PAGE



This is a photocopy of the actual AK-1 recorder chart