

TRILOBITE TESTING INC.

P.O. Box 1733 • Hays, Kansas 67601

RECEIVED
MAR 08 2010

Test Ticket

No. 38139 14008

10/08

BY: _____

Well Name & No. Holland-Steinle #1 Test No. 1 Date 3-7-10
 Company Prospect Oil & Gas Corp Elevation 1828 KB 1823 GL
 Address Box 8.37 Russell Ks. 67665-0837
 Co. Rep / Geo. Brad Hutchison Rig Royal #1
 Location: Sec. 29 Twp. 13 Rge. 12 Co. Russell State Ks

Interval Tested 2995 - 3020 Zone Tested LKC
 Anchor Length 25' Drill Pipe Run 3001 Mud Wt. 9.1
 Top Packer Depth 2990 Drill Collars Run - Vis 4/6
 Bottom Packer Depth 2995 Wt. Pipe Run - WL 9.6
 Total Depth 3020 Chlorides 6800 ppm System LCM -
 Blow Description I.F. Weak steady surface blow

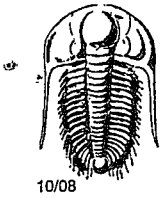
F.I.F. Weak surface blow

Rec	Feet of	%gas	%oil	%water	%mud
<u>10</u>	<u>Mud w/ show oil in Tool</u>				
Rec	Feet of	%gas	%oil	%water	%mud
Rec	Feet of	%gas	%oil	%water	%mud
Rec	Feet of	%gas	%oil	%water	%mud
Rec	Feet of	%gas	%oil	%water	%mud

Rec Total 10 BHT 92 Gravity _____ API RW _____ @ _____ °F Chlorides _____ ppm

(A) Initial Hydrostatic 1450 Test 1050 T-On Location 10:00
 (B) First Initial Flow 11 Jars _____ T-Started 11:34
 (C) First Final Flow 13 Safety Joint _____ T-Open 13:20
 (D) Initial Shut-In 755 Circ Sub _____ T-Pulled 15:20
 (E) Second Initial Flow 13 Hourly Standby _____ T-Out 16:30
 (F) Second Final Flow 14 Mileage 74RT Comments _____
 (G) Final Shut-In 694 Sampler _____
 (H) Final Hydrostatic 1420 Straddle _____
 Shale Packer _____ Ruined Shale Packer _____
 Extra Packer _____ Ruined Packer _____
 Extra Recorder _____ Extra Copies _____
 Initial Open 30
 Initial Shut-In 30
 Final Flow 30
 Final Shut-In 30
 Day Standby _____
 Accessibility _____
 Sub Total 1124-
 Sub Total 1124-

Approved By _____ Our Representative Dan Bangle
 Trilobite Testing Inc. shall not be liable for damaged of any kind of the property or personnel of the one for whom a test is made, or for any loss suffered or sustained, directly or indirectly, through the use of its equipment, or its statements or opinion concerning the results of any test. tools lost or damaged in the hole shall be paid for at cost by the party for whom the test is made.



TRILOBITE TESTING INC.

P.O. Box 1733 • Hays, Kansas 67601

RECEIVED
MAR 09 2010

Test Ticket

No. 38140

BY: _____

Well Name & No. Holland-Steinle #1 Test No. 2 Date 3-7-10
 Company Prospect Oil & Gas Corp Elevation 1828 KB 1823 GL
 Address _____
 Co. Rep / Geo. Brad Hutchison Rig Royal #1
 Location: Sec. 29 Twp. 13 Rge. 12 Co. Russell State Ks

Interval Tested 3023-3036 Zone Tested BC LKC
 Anchor Length 13 Drill Pipe Run 3032 Mud Wt. 9.1
 Top Packer Depth 3017 Drill Collars Run - Vis 46
 Bottom Packer Depth 3023 Wt. Pipe Run - WL 9.6
 Total Depth 3036 Chlorides 6800 ppm System LCM -
 Blow Description I.F. Weak Steady surface blow

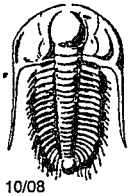
I.F. Weak surface blow

Rec	Feet of	%gas	%oil	%water	%mud
<u>5</u>	<u>Mod w/oil spots</u>				
Rec	Feet of	%gas	%oil	%water	%mud
Rec	Feet of	%gas	%oil	%water	%mud
Rec	Feet of	%gas	%oil	%water	%mud
Rec	Feet of	%gas	%oil	%water	%mud

Rec Total 5 BHT 89 Gravity _____ API RW _____ @ _____ °F Chlorides _____ ppm

(A) Initial Hydrostatic 1464 Test 1060 T-On Location 21:15
 (B) First Initial Flow 9 Jars _____ T-Started 21:38
 (C) First Final Flow 11 Safety Joint _____ T-Open 23:16
 (D) Initial Shut-In 27 Circ Sub _____ T-Pulled 01:16
 (E) Second Initial Flow 12 Hourly Standby _____ T-Out 02:29
 (F) Second Final Flow 12 Mileage 74RT Comments _____
 (G) Final Shut-In 19 Sampler _____
 (H) Final Hydrostatic 1436 Straddle _____
 Shale Packer _____ Ruined Shale Packer _____
 Extra Packer _____ Ruined Packer _____
 Extra Recorder _____ Extra Copies _____
 Day Standby _____ Sub Total 0
 Accessibility _____ Total 1124
 Sub Total 1124

Approved By _____ Our Representative Dan Kangle
 Trilobite Testing Inc. shall not be liable for damaged of any kind of the property or personnel of the one for whom a test is made, or for any loss suffered or sustained, directly or indirectly, through the use of its equipment, or its statements or opinion concerning the results of any test. tools lost or damaged in the hole shall be paid for at cost by the party for whom the test is made.



TRILOBITE TESTING INC.

P.O. Box 1733 • Hays, Kansas 67601

RECEIVED
MAR 09 2010

Test Ticket

NO. 38141

10/08

BT: _____

Well Name & No. Holland-Steinle #1 Test No. 3 Date 3-8-10
 Company Prospect Oil & Gas Corp Elevation 1828 KB 1823 GL _____
 Address _____
 Co. Rep / Geo. Brad Hutchison Rig Royal #1
 Location: Sec. 29 Twp. 13 Rge. 12 Co. Russell State KS

Interval Tested 3055 — 3090 Zone Tested F KC
 Anchor Length 35 Drill Pipe Run 3064 Mud Wt. 9
 Top Packer Depth 3050 Drill Collars Run — Vis 48
 Bottom Packer Depth 3055 Wt. Pipe Run — WL 9.6
 Total Depth 3090 Chlorides 10,500 ppm System LCM —
 Blow Description I.F. Weak-building to 1"

F.F. Weak-building to 1/2"

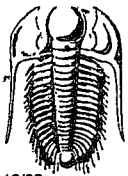
Rec	Feet of	%gas	%oil	%water	%mud
<u>40</u>	<u>Mdy WTR w/ few oil spots</u>				
	<u>in Tool</u>				

Rec Total 40 BHT 92 Gravity _____ API RW .12 @ 72° F Chlorides 6000 ppm

(A) Initial Hydrostatic <u>1470</u>	<input type="checkbox"/> Test <u>1060</u>	T-On Location <u>09:25</u>
(B) First Initial Flow <u>9</u>	<input type="checkbox"/> Jars _____	T-Started <u>09:40</u>
(C) First Final Flow <u>18</u>	<input type="checkbox"/> Safety Joint _____	T-Open <u>11:03</u>
(D) Initial Shut-In <u>579</u>	<input type="checkbox"/> Circ Sub _____	T-Pulled <u>1:3:18</u>
(E) Second Initial Flow <u>19</u>	<input type="checkbox"/> Hourly Standby _____	T-Out <u>14:40</u>
(F) Second Final Flow <u>28</u>	<input type="checkbox"/> Mileage <u>74 RT</u>	Comments _____
(G) Final Shut-In <u>588</u>	<input type="checkbox"/> Sampler _____	_____
(H) Final Hydrostatic <u>1435</u>	<input type="checkbox"/> Straddle _____	_____
	<input type="checkbox"/> Shale Packer _____	<input type="checkbox"/> Ruined Shale Packer _____
Initial Open <u>30</u>	<input type="checkbox"/> Extra Packer _____	<input type="checkbox"/> Ruined Packer _____
Initial Shut-In <u>15</u>	<input type="checkbox"/> Extra Recorder _____	<input type="checkbox"/> Extra Copies _____
Final Flow <u>60</u>	<input type="checkbox"/> Day Standby _____	Sub Total <u>0</u>
Final Shut-In <u>30</u>	<input type="checkbox"/> Accessibility _____	Total <u>1124</u>

Sub Total 1124

Approved By _____ Our Representative Dan Kumpf
 Trilobite Testing Inc. shall not be liable for damaged of any kind of the property or personnel of the one for whom a test is made, or for any loss suffered or sustained, directly or indirectly, through the use of its equipment, or its statements or opinion concerning the results of any test. tools lost or damaged in the hole shall be paid for at cost by the party for whom the test is made.



TRILOBITE TESTING INC.

P.O. Box 1733 • Hays, Kansas 67601

RECEIVED
MAR 09 2010

Test Ticket

NO. 38142

10/08

Well Name & No. Holland-Steinle #1 Test No. 4 Date 3-9-10
 Company Prospect Oil + Gas Corp Elevation 1828 KB 1823 GL
 Address _____
 Co. Rep / Geo. Brad Hutchison Rig Royal #1
 Location: Sec. 29 Twp. 13 Rge. 12 Co. Russell State Ks

Interval Tested 3205 - 3240 Zone Tested K LKC
 Anchor Length 35 Drill Pipe Run 3189 Mud Wt. 9
 Top Packer Depth 3200 Drill Collars Run - Vis 48
 Bottom Packer Depth 3205 Wt. Pipe Run - WL 9.6
 Total Depth 3240 Chlorides 10,500 ppm System LCM -
 Blow Description F.F. Weak - died in 10 min.

F.F. No blow

Rec	Feet of	%gas	%oil	%water	%mud
<u>2</u>	<u>Mud</u>				
Rec	Feet of	%gas	%oil	%water	%mud
Rec	Feet of	%gas	%oil	%water	%mud
Rec	Feet of	%gas	%oil	%water	%mud
Rec	Feet of	%gas	%oil	%water	%mud
Rec Total	<u>2</u>	BHT <u>96</u>	Gravity _____	API RW _____	@ _____ °F Chlorides _____ ppm

- (A) Initial Hydrostatic 1572
- (B) First Initial Flow 11
- (C) First Final Flow 13
- (D) Initial Shut-In 736
- (E) Second Initial Flow 13
- (F) Second Final Flow 12
- (G) Final Shut-In 803
- (H) Final Hydrostatic 1537

- Test 1060
- Jars _____
- Safety Joint _____
- Circ Sub _____
- Hourly Standby _____
- Mileage 74 RT
- Sampler _____
- Straddle _____
- Shale Packer _____
- Extra Packer _____
- Extra Recorder _____
- Day Standby _____
- Accessibility _____
- Sub Total 1124

- T-On Location 05:30
- T-Started 05:59
- T-Open 07:20
- T-Pulled 08:20
- T-Out 09:44

- Comments _____
- Ruined Shale Packer _____
- Ruined Packer _____
- Extra Copies _____
- Sub Total 0
- Total 1124

Initial Open 15
 Initial Shut-In 15
 Final Flow 15
 Final Shut-In 15

Approved By _____ Our Representative Dan Rangle
 Trilobite Testing Inc. shall not be liable for damaged of any kind of the property or personnel of the one for whom a test is made, or for any loss suffered or sustained, directly or indirectly, through the use of its equipment, or its statements or opinion concerning the results of any test. tools lost or damaged in the hole shall be paid for at cost by the party for whom the test is made.