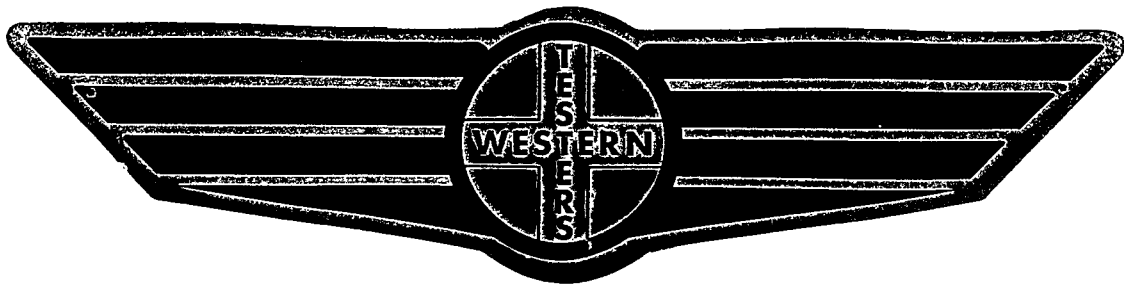


FORMATION TEST REPORT



Home Office:

Wichita, Kansas 67201

P.O. Box 1599

Phone 1-800-688-7021

DST REPORT

GENERAL INFORMATION

DATE : 9-24-94 TICKET : 20437
CUSTOMER : RED OAK ENERGY, INC LEASE : GREENE TRUST
WELL : 1-19 TEST: 1 GEOLOGIST: BANKS
ELEVATION: 3822 GR FORMATION: MORROW
SECTION : 19 TOWNSHIP : 15 S
RANGE : 41 W COUNTY: WALLACE STATE : KS
GAUGE SN#: 13760 RANGE : 3950 CLOCK : 12

WELL INFORMATION

PERFORATION INTERVAL FROM: 5049.00 ft TO: 5085.00 ft TVD: 5085.0 ft
DEPTH OF SELECTIVE ZONE: TEST TYPE: OIL
DEPTH OF RECORDERS: 5067.0 ft 5070.0 ft
TEMPERATURE: 140.0

DRILL COLLAR LENGTH: 0.0 ft I.D.: 0.000 in
WEIGHT PIPE LENGTH : 319.0 ft I.D.: 3.200 in
DRILL PIPE LENGTH : 4704.0 ft I.D.: 3.800 in
TEST TOOL LENGTH : 26.0 ft TOOL SIZE : 5.500 in
ANCHOR LENGTH : 36.0 ft ANCHOR SIZE: 5.500 in
SURFACE CHOKE SIZE : 0.750 in BOTTOM CHOKE SIZE: 0.750 in
MAIN HOLE SIZE : 7.875 in TOOL JOINT SIZE : 4.5 XH
PACKER DEPTH: 5049.0 ft SIZE: 6.750 in
PACKER DEPTH: 0.0 ft SIZE: 0.000 in
PACKER DEPTH: 0.0 ft SIZE: 0.000 in
PACKER DEPTH: 0.0 ft SIZE: 0.000 in

MUD INFORMATION

DRILLING CON. : ABERCROMBIE RIG 4
MUD TYPE : CHEMICAL VISCOSITY : 52.00 cp
WEIGHT : 9.100 ppg WATER LOSS: 9.000 cc
CHLORIDES : 5900 ppm
JARS-MAKE : WESTERN SERIAL NUMBER: 414
DID WELL FLOW?: NO REVERSED OUT?: NO

COMMENTS

Comment

INITIAL FLOW PERIOD- STRONG BLOW- BOTTOM OF BUCKET
IN 6 MINUTES. FINAL FLOW PERIOD- GAS TO SURFACE
ON OPENING TOOL.

DST REPORT (CONTINUED)

COMMENTS (CONTINUED)

Comment

FLUID RECOVERY

Feet of Fluid	% Oil	% Gas	% Water	% Mud	Comments
0.0	0.0	0.0	0.0	0.0	4766' GAS ABOVE FLUID
289.0	15.0	10.0	0.0	75.0	GASSY OIL CUT MUD
30.0	100.0	0.0	0.0	0.0	CLEAN OIL
0.0	0.0	0.0	0.0	0.0	OIL GRAVITY 37@60 DEG. F.

RATE INFORMATION

OIL VOLUME:	0.7296 STB	TOTAL FLOW TIME:	90.0000 min.
GAS VOLUME:	1.6141 SCF	AVERAGE OIL RATE:	46.1685 STB/D
MUD VOLUME:	2.1559 STB	AVERAGE WATER RATE:	0.0000 STB/D
WATER VOLUME:	0.0000 STB		
TOTAL FLUID :	2.8855 STB		

FIELD TIME & PRESSURE INFORMATION

INITIAL HYDROSTATIC PRESSURE: 2474.00

Description	Duration	p1	p End
INITIAL FLOW	30.00	97.00	117.00
INITIAL SHUT-IN	45.00		1033.00
FINAL FLOW	60.00	126.00	185.00
FINAL SHUT-IN	90.00		1013.00

FINAL HYDROSTATIC PRESSURE: 2434.00

DST REPORT (CONTINUED)

OFFICE TIME & PRESSURE INFORMATION

INITIAL HYDROSTATIC PRESSURE: 2500.00

<u>Description</u>	<u>Duration</u>	<u>p1</u>	<u>p End</u>
INITIAL FLOW	30.00	113.00	117.00
INITIAL SHUT-IN	45.00		1032.00
FINAL FLOW	60.00	132.00	185.00
FINAL SHUT-IN	90.00		1014.00

FINAL HYDROSTATIC PRESSURE: 2444.00

GAS FLOW REPORT

GENERAL INFORMATION

DATE : 9-24-94 CUSTOMER : RED OAK ENERGY, INC WELL : 1-19 ELEVATION: 3822 GR SECTION : 19 RANGE : 41 W GAUGE SN#: 13760	TEST: 1	TICKET : 20437 LEASE : GREENE TRUST GEOLOGIST: BANKS FORMATION: MORROW TOWNSHIP : 15 S STATE : KS CLOCK : 12
COUNTY: WALLACE RANGE : 3950		

PRE FLOW

Time Guage (min)	Tester Type	Orifice Size	Pressure	Flow Desc.
---------------------	----------------	-----------------	----------	------------

SECOND FLOW

Time Guage (min)	Tester Type	Orifice Size	Pressure	Flow Desc.
10 MIN	MERLA	0.250	8 PSIG	27000 SCF/D
20 MIN.	MERLA	0.250	16 PSIG	40900 SCF/D
30 MIN.	MERLA	0.250	29 PSIG	60400 SCF/D
40 MIN.	MERLA	0.250	38 PSIG	73000 SCF/D
50 MIN.	MERLA	0.250	45 PSIG	82700 SCF/D
60 MIN.	MERLA	0.250	48 PSIG	86800 SCF/D

PRESSURE TRANSIENT REPORT

GENERAL INFORMATION

DATE : 9-24-94	TICKET : 20437
CUSTOMER : RED OAK ENERGY, INC	LEASE : GREENE TRUST
WELL : 1-19 TEST: 1	GEOLOGIST: BANKS
ELEVATION: 3822 GR	FORMATION: MORROW
SECTION : 19	TOWNSHIP : 15 S
RANGE : 41 W COUNTY: WALLACE	STATE : KS
GAUGE SN#: 13760 RANGE : 3950	CLOCK : 12

INITIAL FLOW

<u>Time (min)</u>	<u>Pressure</u>	<u>Delta P</u>
0.00	113.00	113.00
5.00	113.00	0.00
10.00	113.00	0.00
15.00	113.00	0.00
20.00	117.00	4.00
25.00	117.00	0.00
30.00	117.00	0.00

INITIAL SHUT IN

<u>Time (min)</u>	<u>Pressure</u>	<u>Delta P</u>	<u>Horner T</u>
3.00	645.00	645.00	11.00
6.00	921.00	276.00	6.00
9.00	987.00	66.00	4.33
12.00	1009.00	22.00	3.50
15.00	1019.00	10.00	3.00
18.00	1022.00	3.00	2.67
21.00	1026.00	4.00	2.43
24.00	1027.00	1.00	2.25
27.00	1028.00	1.00	2.11
30.00	1029.00	1.00	2.00
33.00	1030.00	1.00	1.91
36.00	1031.00	1.00	1.83
39.00	1031.00	0.00	1.77
42.00	1032.00	1.00	1.71
45.00	1032.00	0.00	1.67

PRESSURE TRANSIENT REPORT (CONTINUED)

FINAL FLOW

<u>Time (min)</u>	<u>Pressure</u>	<u>Delta P</u>
0.00	132.00	132.00
5.00	132.00	0.00
10.00	133.00	1.00
15.00	137.00	4.00
20.00	144.00	7.00
25.00	153.00	9.00
30.00	160.00	7.00
35.00	170.00	10.00
40.00	176.00	6.00
45.00	179.00	3.00
50.00	182.00	3.00
55.00	184.00	2.00
60.00	185.00	1.00

FINAL SHUT IN

<u>Time (min)</u>	<u>Pressure</u>	<u>Delta P</u>	<u>Horner T</u>
3.00	923.00	923.00	21.00
6.00	953.00	30.00	11.00
9.00	965.00	12.00	7.67
12.00	972.00	7.00	6.00
15.00	976.00	4.00	5.00
18.00	983.00	7.00	4.33
21.00	987.00	4.00	3.86
24.00	990.00	3.00	3.50
27.00	994.00	4.00	3.22
30.00	997.00	3.00	3.00
33.00	1000.00	3.00	2.82
36.00	1001.00	1.00	2.67
39.00	1002.00	1.00	2.54
42.00	1003.00	1.00	2.43
45.00	1004.00	1.00	2.33
48.00	1005.00	1.00	2.25
51.00	1006.00	1.00	2.18
54.00	1007.00	1.00	2.11
57.00	1008.00	1.00	2.05
60.00	1009.00	1.00	2.00
63.00	1010.00	1.00	1.95
66.00	1011.00	1.00	1.91
69.00	1012.00	1.00	1.87
72.00	1012.00	0.00	1.83
75.00	1013.00	1.00	1.80

PRESSURE TRANSIENT REPORT (CONTINUED)

FINAL SHUT IN (CONTINUED)

<u>Time (min)</u>	<u>Pressure</u>	<u>Delta P</u>	<u>Horner T</u>
78.00	1013.00	0.00	1.77
81.00	1013.00	0.00	1.74
84.00	1014.00	1.00	1.71
87.00	1014.00	0.00	1.69
90.00	1014.00	0.00	1.67

FLUID SAMPLE REPORT

GENERAL INFORMATION

DATE : 9-24-94
CUSTOMER : RED OAK ENERGY, INC
WELL : 1-19 TEST: 1
ELEVATION: 3822 GR
SECTION : 19
RANGE : 41 W COUNTY: WALLACE
GAUGE SN#: 13760 RANGE : 3950
TICKET : 20437
LEASE : GREENE TRUST
GEOLOGIST: BANKS
FORMATION: MORROW
TOWNSHIP : 15 S
STATE : KS
CLOCK : 12

SAMPLE INFORMATION

PRESSURE IN SAMPLER: 175.00 PSIG BHT: 140.0 DEG F
TOTAL VOLUME OF SAMPLER: 3150.00 cc
TOTAL VOLUME OF SAMPLE: 1250.00 cc
OIL: 1200.00 cc
WATER: 0.00 cc
MUD: 50.00 cc
GAS: 9.16 cc
OTHER: 0.00 cc

RESISTIVITY

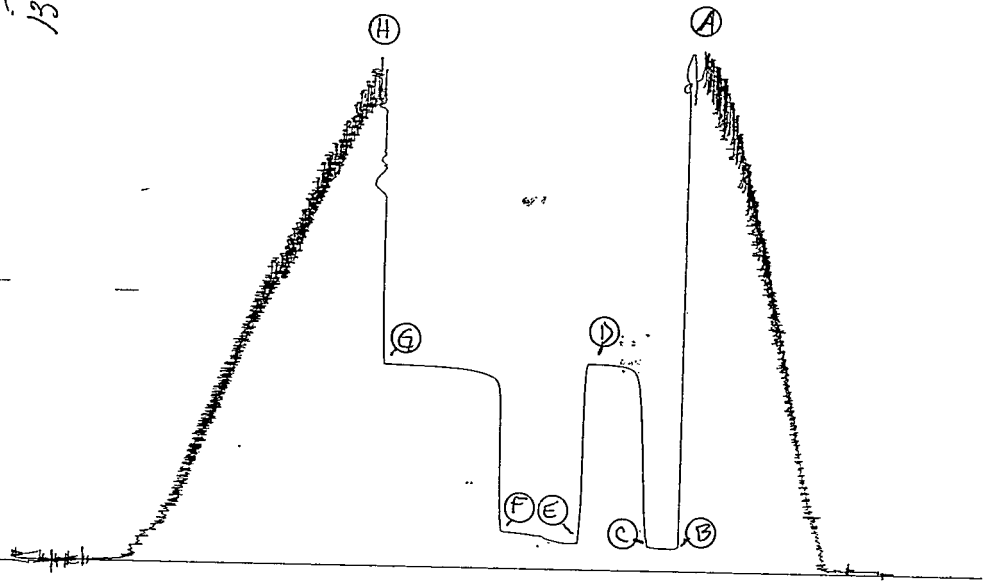
DRILLING MUD: CHLORIDE CONTENT: 0.00 ppm
MUD PIT SAMPLE: CHLORIDE CONTENT: 0.00 ppm
GAS/OIL RATIO: GRAVITY:
WHERE WAS SAMPLE DRAINED:
REMARKS:

JK# 20437

5

I

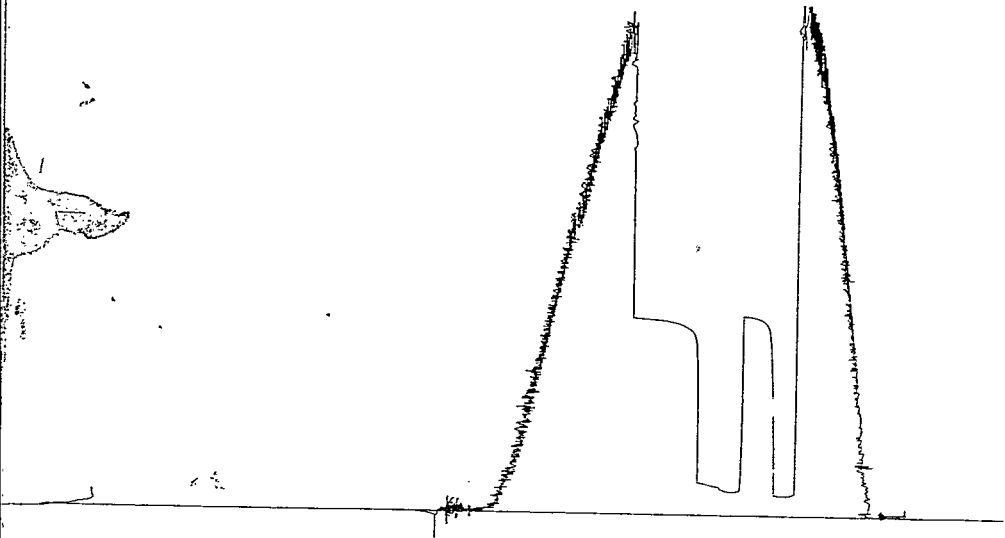
13760



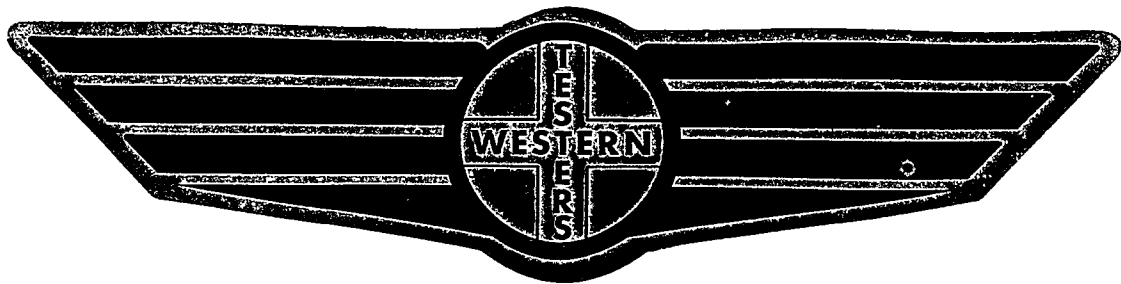
Jkt # 20437

0

13400



FORMATION TEST REPORT



Home Office:

Wichita, Kansas 67201

P.O. Box 1599

Phone 1-800-688-7021

DST REPORT

GENERAL INFORMATION

DATE	: 9-26-94	TICKET	: 20438
CUSTOMER	: RED OAK ENERGY, INC	LEASE	: GREENE TRUST
WELL	: 1-19	TEST: 2	GEOLOGIST: KEVIN DAVIS
ELEVATION	: 3822 GR	FORMATION	: MORROW
SECTION	: 19	TOWNSHIP	: 15S
RANGE	: 41W	COUNTY: WALLACE	STATE : KS
GAUGE SN#	: 13760	RANGE : 3950	CLOCK : 12

WELL INFORMATION

PERFORATION INTERVAL FROM:	5080.00 ft	TO:	5182.00 ft	TVD:	5300.0 ft
DEPTH OF SELECTIVE ZONE:				TEST TYPE:	OIL
DEPTH OF RECORDERS:	5172.0 ft		5175.0 ft		
TEMPERATURE:	148.0				
DRILL COLLAR LENGTH:	0.0 ft	I.D.:		0.000 in	
WEIGHT PIPE LENGTH :	191.0 ft	I.D.:		3.200 in	
DRILL PIPE LENGTH :	4857.0 ft	I.D.:		3.800 in	
TEST TOOL LENGTH :	32.0 ft	TOOL SIZE :		5.500 in	
ANCHOR LENGTH :	102.0 ft	ANCHOR SIZE:		5.500 in	
SURFACE CHOKE SIZE :	0.750 in	BOTTOM CHOKE SIZE:		0.750 in	
MAIN HOLE SIZE :	7.875 in	TOOL JOINT SIZE :		4.5 XH	
PACKER DEPTH:	5075.0 ft	SIZE:		6.750 in	
PACKER DEPTH:	5080.0 ft	SIZE:		6.750 in	
PACKER DEPTH:	0.0 ft	SIZE:		0.000 in	
PACKER DEPTH:	0.0 ft	SIZE:		0.000 in	

MUD INFORMATION

DRILLING CON. :	ABERCROMBIE	VISCOSITY :	52.00 cp
MUD TYPE :	CHEMICAL	WATER LOSS:	9.000 cc
WEIGHT :	9.100 ppg	SERIAL NUMBER:	414
CHLORIDES :	5900 ppm	REVERSED OUT?:	NO
JARS-MAKE :	WESTERN		
DID WELL FLOW?:	NO		

COMMENTS

Comment

INITIAL FLOW PERIOD- STRONG BLOW- BOTTOM OF BUCKET
IN 2 MINUTES.
FINAL FLOW PERIOD- GAS TO SURFACE DURING FIRST

DST REPORT (CONTINUED)

COMMENTS (CONTINUED)

Comment

SHUT IN.

FLUID RECOVERY

Feet of Fluid	% Oil	% Gas	% Water	% Mud	Comments
0.0	0.0	0.0	0.0	0.0	2440' GAS ABOVE FLUID
2170.0	85.0	15.0	0.0	0.0	GASSY OIL
434.0	25.0	5.0	40.0	30.0	GASSY OIL C/MUDDY WATER
248.0	0.0	0.0	100.0	0.0	WATER CHLORIDES 32000 PPM
0.0	0.0	0.0	0.0	0.0	OIL GRAVITY 37@60 DEG. F.

RATE INFORMATION

OIL VOLUME: 27.3935 STB
 GAS VOLUME: 27.3448 SCF
 MUD VOLUME: 1.8262 STB
 WATER VOLUME: 5.1343 STB
 TOTAL FLUID : 34.3540 STB

TOTAL FLOW TIME: 120.0000 min.
 AVERAGE OIL RATE: 337.1504 STB/D
 AVERAGE WATER RATE: 75.0975 STB/D

FIELD TIME & PRESSURE INFORMATION

INITIAL HYDROSTATIC PRESSURE: 2733.00

Description	Duration	p1	p End
INITIAL FLOW	30.00	702.00	877.00
INITIAL SHUT-IN	45.00		1072.00
FINAL FLOW	60.00	964.00	1072.00
FINAL SHUT-IN	90.00		1072.00

FINAL HYDROSTATIC PRESSURE: 2633.00

DST REPORT (CONTINUED)

OFFICE TIME & PRESSURE INFORMATION

INITIAL HYDROSTATIC PRESSURE: 2792.00

<u>Description</u>	<u>Duration</u>	<u>p1</u>	<u>p End</u>
INITIAL FLOW	30.00	701.00	887.00
INITIAL SHUT-IN	42.00		1079.00
FINAL FLOW	90.00	1079.00	1077.00
FINAL SHUT-IN	90.00		1077.00

FINAL HYDROSTATIC PRESSURE: 2631.00

GAS FLOW REPORT

GENERAL INFORMATION

DATE : 9-26-94 CUSTOMER : RED OAK ENERGY, INC WELL : 1-19 ELEVATION: 3822 GR SECTION : 19 RANGE : 41W GAUGE SN#: 13760	TEST: 2	TICKET : 20438 LEASE : GREENE TRUST GEOLOGIST: KEVIN DAVIS FORMATION: MORROW TOWNSHIP : 15S STATE : KS CLOCK : 12
COUNTY: WALLACE RANGE : 3950		

PRE FLOW

Time Guage (min)	Tester Type	Orifice Size	Pressure	Flow Desc.
---------------------	----------------	-----------------	----------	------------

SECOND FLOW

Time Guage (min)	Tester Type	Orifice Size	Pressure	Flow Desc.
10 MIN	MERLA	0.250	2 PSIG	12700 SCF/D
20 MIN.	MERLA	0.250	2 PSIG	12700 SCF/D
30 MIN.	MERLA	0.250	8" OF WATER	4760 SCF/D
40 MIN.	MERLA	0.250	6" OF WATER	4120 SCF/D
50 MIN.	MERLA	0.250	6" OF WATER	4120 SCF/D
60 MIN.	MERLA	0.250	5" OF WATER	3710 SCF/D

PRESSURE TRANSIENT REPORT

GENERAL INFORMATION

DATE	: 9-26-94	TICKET	: 20438
CUSTOMER	: RED OAK ENERGY, INC	LEASE	: GREENE TRUST
WELL	: 1-19	TEST:	2
ELEVATION:	3822 GR	GEOLOGIST:	KEVIN DAVIS
SECTION	: 19	FORMATION:	MORROW
RANGE	: 41W	COUNTY:	WALLACE
GAUGE SN#:	13760	RANGE	: 3950
		TOWNSHIP	: 15S
		STATE	: KS
		CLOCK	: 12

INITIAL FLOW

<u>Time (min)</u>	<u>Pressure</u>	<u>Delta P</u>
0.00	701.00	701.00
5.00	701.00	0.00
10.00	723.00	22.00
15.00	776.00	53.00
20.00	833.00	57.00
25.00	881.00	48.00
30.00	887.00	6.00

INITIAL SHUT IN

<u>Time (min)</u>	<u>Pressure</u>	<u>Delta P</u>	<u>Horner T</u>
3.00	1045.00	1045.00	11.00
6.00	1061.00	16.00	6.00
9.00	1066.00	5.00	4.33
12.00	1070.00	4.00	3.50
15.00	1073.00	3.00	3.00
18.00	1073.00	0.00	2.67
21.00	1073.00	0.00	2.43
24.00	1073.00	0.00	2.25
27.00	1074.00	1.00	2.11
30.00	1075.00	1.00	2.00
33.00	1076.00	1.00	1.91
36.00	1077.00	1.00	1.83
39.00	1079.00	2.00	1.77
42.00	1079.00	0.00	1.71

PRESSURE TRANSIENT REPORT (CONTINUED)

FINAL FLOW

<u>Time (min)</u>	<u>Pressure</u>	<u>Delta P</u>
0.00	1079.00	1079.00
5.00	966.00	-113.00
10.00	970.00	4.00
15.00	989.00	19.00
20.00	1012.00	23.00
25.00	1030.00	18.00
30.00	1043.00	13.00
35.00	1054.00	11.00
40.00	1061.00	7.00
45.00	1068.00	7.00
50.00	1071.00	3.00
55.00	1075.00	4.00
60.00	1077.00	2.00
65.00	1077.00	0.00
70.00	1077.00	0.00
75.00	1077.00	0.00
80.00	1077.00	0.00
85.00	1077.00	0.00
90.00	1077.00	0.00

FINAL SHUT IN

<u>Time (min)</u>	<u>Pressure</u>	<u>Delta P</u>	<u>Horner T</u>
3.00	1077.00	1077.00	31.00
6.00	1077.00	0.00	16.00
9.00	1077.00	0.00	11.00
12.00	1077.00	0.00	8.50
15.00	1077.00	0.00	7.00
18.00	1077.00	0.00	6.00
21.00	1077.00	0.00	5.29
24.00	1077.00	0.00	4.75
27.00	1077.00	0.00	4.33
30.00	1077.00	0.00	4.00
33.00	1077.00	0.00	3.73
36.00	1077.00	0.00	3.50
39.00	1077.00	0.00	3.31
42.00	1077.00	0.00	3.14
45.00	1077.00	0.00	3.00
48.00	1077.00	0.00	2.88
51.00	1077.00	0.00	2.76
54.00	1077.00	0.00	2.67
57.00	1077.00	0.00	2.58

PRESSURE TRANSIENT REPORT (CONTINUED)

FINAL SHUT IN (CONTINUED)

<u>Time (min)</u>	<u>Pressure</u>	<u>Delta P</u>	<u>Horner T</u>
60.00	1077.00	0.00	2.50
63.00	1077.00	0.00	2.43
66.00	1077.00	0.00	2.36
69.00	1077.00	0.00	2.30
72.00	1077.00	0.00	2.25
75.00	1077.00	0.00	2.20
78.00	1077.00	0.00	2.15
81.00	1077.00	0.00	2.11
84.00	1077.00	0.00	2.07
87.00	1077.00	0.00	2.03
90.00	1077.00	0.00	2.00

FLUID SAMPLE REPORT

GENERAL INFORMATION

DATE : 9-26-94
CUSTOMER : RED OAK ENERGY, INC
WELL : 1-19 TEST: 2
ELEVATION: 3822 GR
SECTION : 19
RANGE : 41W COUNTY: WALLACE
GAUGE SN#: 13760 RANGE : 3950
TICKET : 20438
LEASE : GREENE TRUST
GEOLOGIST: KEVIN DAVIS
FORMATION: MORROW
TOWNSHIP : 15S
STATE : KS
CLOCK : 12

SAMPLE INFORMATION

PRESSURE IN SAMPLER: 700.00 PSIG BHT: 148.0 DEG F
TOTAL VOLUME OF SAMPLER: 3150.00 cc
TOTAL VOLUME OF SAMPLE: 2300.00 cc
OIL: 2150.00 cc
WATER: 150.00 cc
MUD: 0.00 cc
GAS: 5.40 cc
OTHER: 0.00 cc

RESISTIVITY

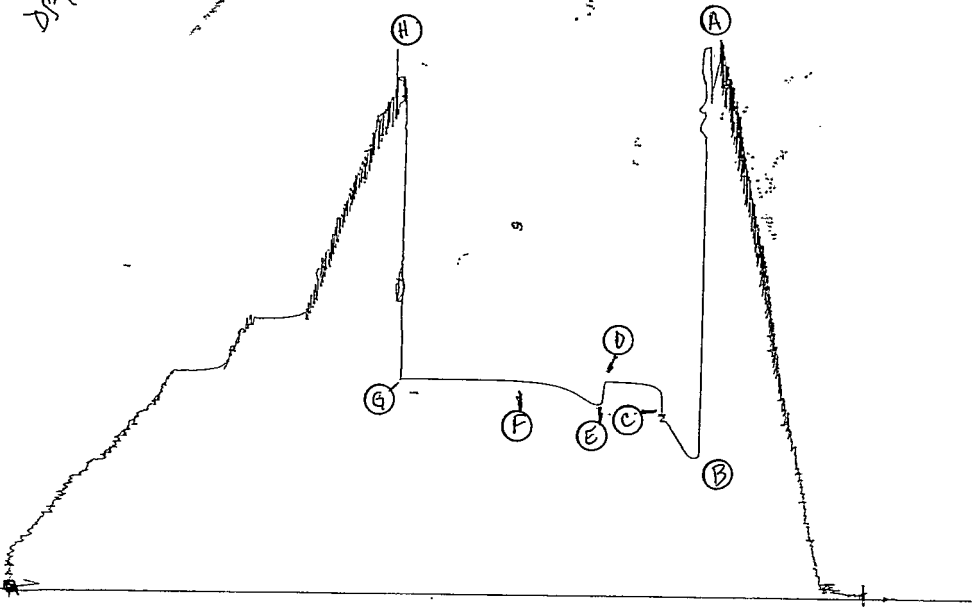
DRILLING MUD: .1 @ 68
MUD PIT SAMPLE: 2.1 @ 68
GAS/OIL RATIO:
WHERE WAS SAMPLE DRAINED:
REMARKS:
CHLORIDE CONTENT: 32000.00 ppm
CHLORIDE CONTENT: 5900.00 ppm
GRAVITY:

DKt # 20438

5

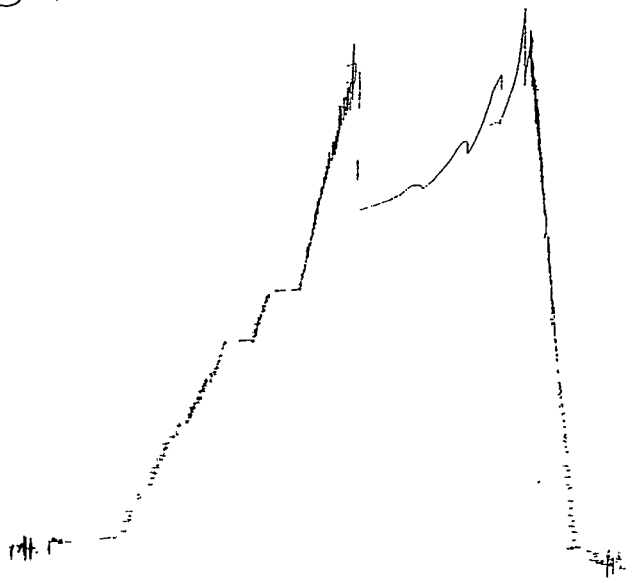
13760
DS #2

1



Staddle
24/Nov 1968

TKT 20438
Below Staddle



JKT # 20438

0

1340
DS#2

