

WESTERN TESTERS INC.
SUBSURFACE PRESSURE SURVEY

DATE : 11-5-86
CUSTOMER : RAYMOND GOODIN TRUST
WELL : #1 TEST: 1
ELEVATION : 1319
SECTION : 33
RANGE : 3W COUNTY : SALINA
GAUGE SN# : 5666 RANGE : 3950
TICKET : 7047
LEASE : MORRIS A
GEOLOGIST : W. NIGH
FORMATION : MAQUOKETA
TOWNSHIP : 16S
STATE : KS
CLOCK : 12

INTERVAL FROM : 3319 TO : 3345 TOTAL DEPTH : 3345
DEPTH OF SELECTIVE ZONE :
PACKER DEPTH : 3314 SIZE : 6.63
PACKER DEPTH : 3319 SIZE : 6.63
PACKER DEPTH : SIZE :
PACKER DEPTH : SIZE :

DRILLING CON. : RED TIGER #7
MUD TYPE : CHEMICAL VISCOSITY : 46
WEIGHT : 9.8 WATER LOSS (CC) : 10.4
CHLORIDES (PPM) : 1600
JARS-MAKE : WTC SERIAL NUMBER : 412
DID WELL FLOW ? : NO REVERSED OUT ? : NO

DRILL COLLAR LENGTH : 0 FT I.D. inch : 0.00
WEIGHT PIPE LENGTH : 478 FT I.D. inch : 3.38
DRILL PIPE LENGTH : 2811 FT I.D. inch : 4.00
TEST TOOL LENGTH : 30 FT TOOL SIZE : 4.50
ANCHOR LENGTH : 26 FT ANCHOR SIZE : 5.50
SURFACE CHOKE SIZE : .75 IN BOTTOM CHOKE SIZE : .75
MAIN HOLE SIZE : 7.875 IN TOOL JOINT SIZE : 4.5IF

BLOW COMMENT #1 : WEAK BLOW FOR 25 MIN. DIED ON
BLOW COMMENT #2 : INITIAL FLOW PERIOD.
BLOW COMMENT #3 : NO BLOW FLUSHED TOOL FEW BUBBLES
BLOW COMMENT #4 : DIED ON FINAL FLOW PERIOD.

WESTERN TESTERS INC.
WICHITA - KANSAS

Pressure Transient Report

COMPANY : RAYMOND GOODIN TRUST
RIG : 1319 K.B.
FIELD : MORRIS A
WELL : #1
DATE : 11-5-86
GAUGE NO : 5666

OPERATIONAL COMMENTS

- 1.
- 2.
- 3.
- 4.

COMPANY : RAYMOND GOODIN TRUST
 WELL : #1
 GAUGE # : 5666
 DATE : 5/11/86

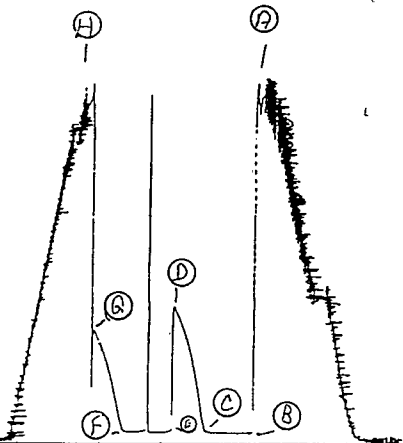
FIELD : MORRIS A
 JOB # : 7047
 DEPTH : 3950
 TEST : 1.

DATA No.	REAL TIME HR:MN:SS	ELAPSE TIME DELTA HOURS	PRESSURE PSIG	TEMP DEG F	DELTA P $P_i - P_{(i-1)}$
1	11:45: 0	0.000	57.000	43.89	0.000
2	11:49:60	0.083	57.000	43.89	0.000
3	11:55: 1	0.167	57.000	43.89	0.000
4	12: 0: 0	0.250	57.000	43.89	0.000
5	12: 4:60	0.333	57.000	43.89	0.000
6	12:10: 1	0.417	58.000	43.89	1.000
7	12:15: 0	0.500	59.000	43.89	1.000
8	12:18: 0	0.550	60.000	43.89	1.000
9	12:21: 0	0.600	77.000	43.89	17.000
10	12:24: 0	0.650	193.000	43.89	116.000
11	12:27: 0	0.700	314.000	43.89	121.000
12	12:30: 0	0.750	424.000	43.89	110.000
13	12:33: 0	0.800	507.000	43.89	83.000
14	12:36: 0	0.850	578.000	43.89	71.000
15	12:39: 0	0.900	629.000	43.89	51.000
16	12:42: 0	0.950	675.000	43.89	46.000
17	12:45: 0	1.000	711.000	43.89	36.000
18	12:46: 1	1.017	60.000	43.89	-651.000
19	12:49:60	1.083	60.000	43.89	0.000
20	12:55: 1	1.167	60.000	43.89	0.000
21	13: 0: 0	1.250	60.000	43.89	0.000
22	13: 4:60	1.333	67.000	43.89	7.000
23	13:10: 1	1.417	64.000	43.89	-3.000
24	13:15: 0	1.500	63.000	43.89	-1.000
25	13:18: 0	1.550	63.000	43.89	0.000
26	13:21: 0	1.600	67.000	43.89	4.000
27	13:24: 0	1.650	128.000	43.89	61.000
28	13:27: 0	1.700	240.000	43.89	112.000
29	13:30: 0	1.750	326.000	43.89	86.000
30	13:33: 0	1.800	414.000	43.89	88.000
31	13:36: 0	1.850	473.000	43.89	59.000
32	13:39: 0	1.900	523.000	43.89	50.000
33	13:42: 0	1.950	571.000	43.89	48.000
34	13:45: 0	2.000	589.000	43.89	18.000

WESTERN TESTERS INC.

TKT 7047

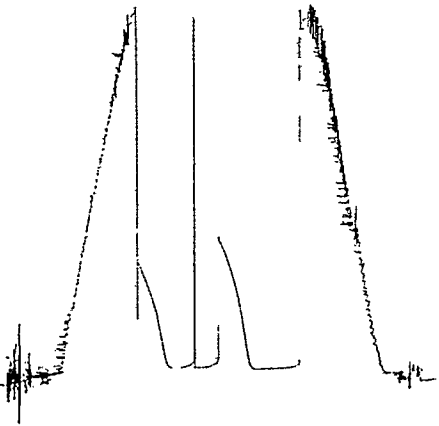
I



2

TKT 7047

0



18759

WESTERN TESTERS INC.
SUBSURFACE PRESSURE SURVEY

DATE : 11-6-86 TICKET : 7048
CUSTOMER : RAYMOND GOODIN TRUST LEASE : MORRIS A
WELL : #1 TEST: 2 GEOLOGIST : W. NIGH
ELEVATION : 1319 FORMATION : SIMPSON
SECTION : 33 TOWNSHIP : 16S
RANGE : 3W COUNTY : SALINE STATE : KS
GAUGE SN# : 5666 RANGE : 3950 CLOCK : 12

INTERVAL FROM : 3444 TO : 3476 TOTAL DEPTH : 3476
DEPTH OF SELECTIVE ZONE :
PACKER DEPTH : 3439 SIZE : 6.63
PACKER DEPTH : 3444 SIZE : 6.63
PACKER DEPTH : SIZE :
PACKER DEPTH : SIZE :

DRILLING CON. : RED TIGER #7
MUD TYPE : CHEMICAL VISCOSITY : 47
WEIGHT : 9.8 WATER LOSS (CC) : L0.4
CHLORIDES (PPM) : 1500
JARS-MAKE : WTC SERIAL NUMBER : 412
DID WELL FLOW ? : NO REVERSED OUT ? : NO

DRILL COLLAR LENGTH : 0 FT I.D. inch : 0.00
WEIGHT PIPE LENGTH : 478 FT I.D. inch : 3.38
DRILL PIPE LENGTH : 2936 FT I.D. inch : 4.00
TEST TOOL LENGTH : 30 FT TOOL SIZE : 4.50
ANCHOR LENGTH : 32 FT ANCHOR SIZE : 5.50
SURFACE CHOKE SIZE : .75 IN BOTTOM CHOKE SIZE : .75
MAIN HOLE SIZE : 7.875 IN TOOL JOINT SIZE : 4.5IF

BLOW COMMENT #1 : 1/4" BOW THROUGHOUT INITIAL FLOW PERIOD.
BLOW COMMENT #2 : OPENED TO NO BLOW FEW BUBBLES THEN DIED
BLOW COMMENT #3 : ON FINAL FLOW PERIOD.
BLOW COMMENT #4 :

RECOVERED : 10 FT OF: MUD WITH NO SHOW

Total Barrels Fluid = 0.11
Total Fluid Prod Rate = 2.66 BFPD
Indicated Wtr Rate = 2.40 BWPD

REMARK 1 :
REMARK 2 :
REMARK 3 :
REMARK 4 :

SET PACKER(S) :	12:00 PM	TIME STARTED OFF BOTTOM :	2:00 PM
WELL TEMPERATURE :	0		
INITIAL HYDROSTATIC PRESSURE		(A)	1812
INITIAL FLOW PERIOD MIN:	30	(B)	67 PSI TO (C) : 69
INITIAL CLOSED IN PERIOD MIN:	30	(D)	923
FINAL FLOW PERIOD MIN:	30	(E)	76 PSI TO (F) : 65
FINAL CLOSED IN PERIOD MIN:	30	(G)	872
FINAL HYDROSTATIC PRESSURE		(H)	1812

WESTERN TESTERS INC.
WICHITA - KANSAS

Pressure Transient Report

COMPANY : RAYMOND GOODIN TRUST
RIG : SALINE-KS
FIELD : MORRIS A
WELL : #1
DATE : 11-6-86
GAUGE NO : 5666

OPERATIONAL COMMENTS

COMPANY : RAYMOND GOODIN TRUST
 WELL : #1
 GAUGE # : 5666
 DATE : 6/11/86

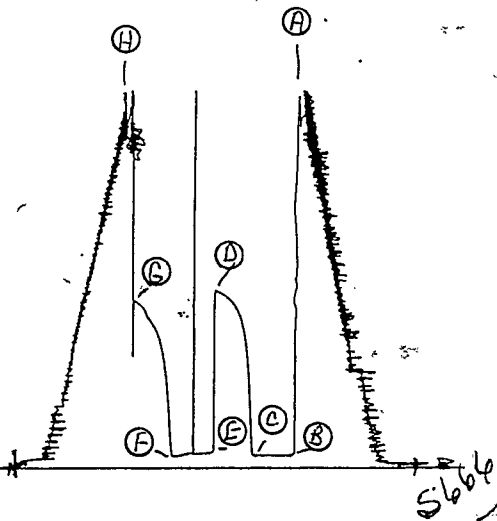
FIELD : MORRIS A
 JOB # : 7048
 DEPTH : 3476
 TEST :

DATA No.	REAL TIME HR:MN:SS	ELAPSE TIME DELTA HOURS	PRESSURE PSIG	TEMP DEG F	DELTA P Pi-P(i-1)
1	12: 0: 0	0.000	67.000	-17.78	0.000
2	12: 4: 60	0.083	67.000	-17.78	0.000
3	12:10: 1	0.167	67.000	-17.78	0.000
4	12:15: 0	0.250	67.000	-17.78	0.000
5	12:19: 60	0.333	68.000	-17.78	1.000
6	12:25: 1	0.417	69.000	-17.78	1.000
7	12:30: 0	0.500	69.000	-17.78	0.000
8	12:33: 0	0.550	408.000	-17.78	339.000
9	12:36: 0	0.600	655.000	-17.78	247.000
10	12:39: 0	0.650	758.000	-17.78	103.000
11	12:42: 0	0.700	816.000	-17.78	58.000
12	12:45: 0	0.750	850.000	-17.78	34.000
13	12:48: 0	0.800	876.000	-17.78	26.000
14	12:51: 0	0.850	894.000	-17.78	18.000
15	12:54: 0	0.900	906.000	-17.78	12.000
16	12:57: 0	0.950	918.000	-17.78	12.000
17	13: 0: 0	1.000	923.000	-17.78	5.000
18	13: 1: 1	1.017	76.000	-17.78	-847.000
19	13: 4: 60	1.083	76.000	-17.78	0.000
20	13:10: 1	1.167	76.000	-17.78	0.000
21	13:15: 0	1.250	76.000	-17.78	0.000
22	13:19: 60	1.333	76.000	-17.78	0.000
23	13:25: 1	1.417	67.000	-17.78	-9.000
24	13:30: 0	1.500	65.000	-17.78	-2.000
25	13:33: 0	1.550	240.000	-17.78	175.000
26	13:36: 0	1.600	497.000	-17.78	257.000
27	13:39: 0	1.650	622.000	-17.78	125.000
28	13:42: 0	1.700	701.000	-17.78	79.000
29	13:45: 0	1.750	744.000	-17.78	43.000
30	13:48: 0	1.800	774.000	-17.78	30.000
31	13:51: 0	1.850	816.000	-17.78	42.000
32	13:54: 0	1.900	844.000	-17.78	28.000
33	13:57: 0	1.950	861.000	-17.78	17.000
34	14: 0: 0	2.000	872.000	-17.78	11.000

WESTERN TESTERS INC.

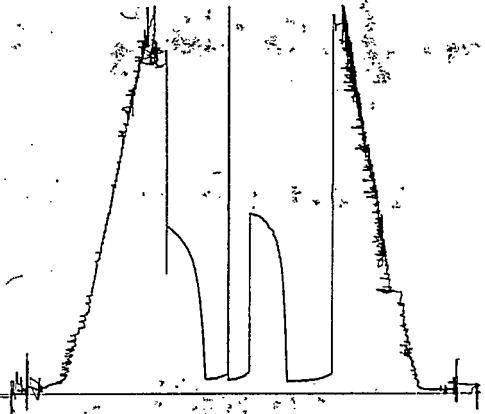
TKT 7048

I



TKT 7048

0



13759

WESTERN TESTERS INC.
SUBSURFACE PRESSURE SURVEY

DATE : 11-7-86 TICKET : 7049
CUSTOMER : RAYMOND GOODIN TRUST, LEASE : MORRIS 'A'
WELL : #1 TEST: 3 GEOLOGIST : W. NIGH
ELEVATION : 1319 KB FORMATION : SIMPSON
SECTION : 33 TOWNSHIP : 16S
RANGE : 3W COUNTY : SALINE STATE : KANSAS
GAUGE SN# : 5666 RANGE : 3950 CLOCK : 12

INTERVAL FROM : 3477 TO : 3488 TOTAL DEPTH : 3488
DEPTH OF SELECTIVE ZONE :
PACKER DEPTH : 3477 SIZE : 6.63
PACKER DEPTH : SIZE :
PACKER DEPTH : 3482 SIZE : 6.63
PACKER DEPTH : SIZE :

DRILLING CON. : RED TIGER RIG #7
MUD TYPE : CHEMICAL VISCOSITY : 47
WEIGHT : 9.8 WATER LOSS (CC) : 10.4
CHLORIDES (PPM) : 1500
JARS-MAKE : WTC SERIAL NUMBER : 412
DID WELL FLOW ? : NO REVERSED OUT ? : YES

DRILL COLLAR LENGTH : 0 FT I.D. inch : 0.00
WEIGHT PIPE LENGTH : 478 FT I.D. inch : 3.38
DRILL PIPE LENGTH : 2969 FT I.D. inch : 4.00
TEST TOOL LENGTH : 30 FT TOOL SIZE : 4.50
ANCHOR LENGTH : 11 FT ANCHOR SIZE : 5.50
SURFACE CHOKE SIZE : .75 IN BOTTOM CHOKE SIZE : .75
MAIN HOLE SIZE : 7.875 IN TOOL JOINT SIZE : 4.5 IF

BLOW COMMENT #1 : INITIAL FLOW-4 INCH BLOW INCREASED TO STRONG
BLOW COMMENT #2 : IN 10 MINUTES.
BLOW COMMENT #3 : FINAL FLOW-3 INCH BLOW INCREASED TO STRONG IN
BLOW COMMENT #4 : 15 MINUTES.

RECOVERED : 1250 FT OF: SALT WATER (1000 PPM)

Total Barrels Fluid = 17.30
Total Fluid Prod Rate = 276.84 BFPD
Indicated Wtr Rate = 276.84 BWPD

REMARK 1 :
REMARK 2 :
REMARK 3 :
REMARK 4 :

SET PACKER(S) :	2:00 AM	TIME STARTED OFF BOTTOM :	5:00 AM
WELL TEMPERATURE :	115		
INITIAL HYDROSTATIC PRESSURE		(A)	1812
INITIAL FLOW PERIOD MIN:	30	(B)	83 PSI TO (C) : 277
INITIAL CLOSED IN PERIOD MIN:	30	(D)	1053
FINAL FLOW PERIOD MIN:	60	(E)	340 PSI TO (F) : 557
FINAL CLOSED IN PERIOD MIN:	63	(G)	1069
FINAL HYDROSTATIC PRESSURE		(H)	1774

WESTERN TESTERS INC.
WICHITA - KANSAS

Pressure Transient Report

COMPANY : RAYMOND GOODIN TRUST
RIG : SALINE-KANSAS
FIELD : MORRIS 'A'
WELL : #1
DATE : 11-7-86
GAUGE NO : 5666

OPERATIONAL COMMENTS

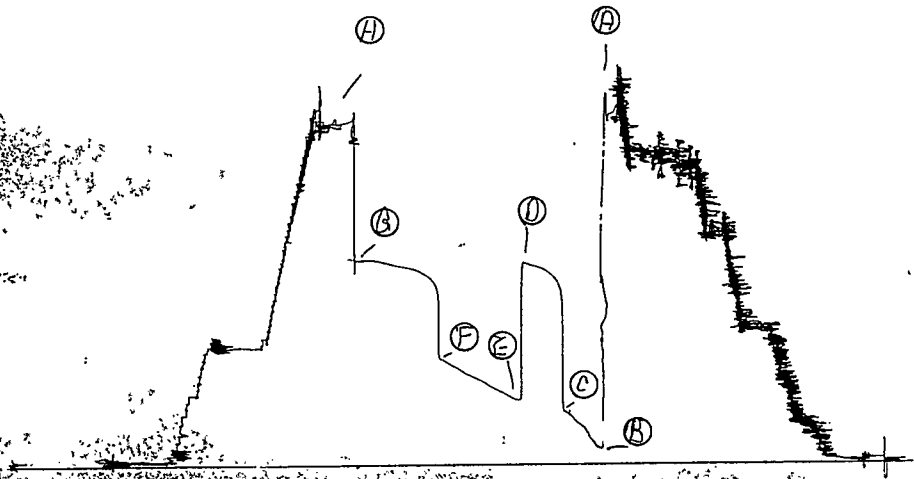
COMPANY : RAYMOND GOODIN TRUST
 WELL : #1
 GAUGE # : 5666
 DATE : 7/11/86

FIELD : MORRIS 'A'
 JOB # : 7049
 DEPTH : 3488
 TEST :

DATA No.	REAL TIME HR:MN:SS	ELAPSE TIME DELTA HOURS	PRESSURE PSIG	TEMP DEG F	DELTA P Pi-P(i-1)
1	2: 0: 0	0.000	83.000	46.11	0.000
2	2: 4: 60	0.083	91.000	46.11	8.000
3	2:10: 1	0.167	134.000	46.11	43.000
4	2:15: 0	0.250	193.000	46.11	59.000
5	2:19: 60	0.333	220.000	46.11	27.000
6	2:25: 1	0.417	257.000	46.11	37.000
7	2:30: 0	0.500	277.000	46.11	20.000
8	2:33: 0	0.550	922.000	46.11	645.000
9	2:36: 0	0.600	964.000	46.11	42.000
10	2:39: 0	0.650	986.000	46.11	22.000
11	2:42: 0	0.700	1003.000	46.11	17.000
12	2:45: 0	0.750	1017.000	46.11	14.000
13	2:48: 0	0.800	1026.000	46.11	9.000
14	2:51: 0	0.850	1033.000	46.11	7.000
15	2:54: 0	0.900	1039.000	46.11	6.000
16	2:57: 0	0.950	1046.000	46.11	7.000
17	3: 0: 0	1.000	1053.000	46.11	7.000
18	3: 1: 1	1.017	340.000	46.11	-713.000
19	3: 4: 60	1.083	341.000	46.11	1.000
20	3:10: 1	1.167	359.000	46.11	18.000
21	3:15: 0	1.250	379.000	46.11	20.000
22	3:19: 60	1.333	400.000	46.11	21.000
23	3:25: 1	1.417	420.000	46.11	20.000
24	3:30: 0	1.500	440.000	46.11	20.000
25	3:34: 60	1.583	455.000	46.11	15.000
26	3:40: 1	1.667	473.000	46.11	18.000
27	3:45: 0	1.750	495.000	46.11	22.000
28	3:49: 60	1.833	514.000	46.11	19.000
29	3:55: 1	1.917	537.000	46.11	23.000
30	4: 0: 0	2.000	557.000	46.11	20.000
31	4: 3: 0	2.050	930.000	46.11	373.000
32	4: 5: 60	2.100	964.000	46.11	34.000
33	4: 9: 0	2.150	983.000	46.11	19.000
34	4:12: 0	2.200	996.000	46.11	13.000
35	4:15: 0	2.250	1007.000	46.11	11.000
36	4:18: 0	2.300	1017.000	46.11	10.000
37	4:21: 0	2.350	1022.000	46.11	5.000
38	4:24: 0	2.400	1027.000	46.11	5.000
39	4:27: 0	2.450	1032.000	46.11	5.000
40	4:30: 0	2.500	1037.000	46.11	5.000
41	4:33: 0	2.550	1042.000	46.11	5.000
42	4:36: 0	2.600	1047.000	46.11	5.000
43	4:39: 0	2.650	1052.000	46.11	5.000
44	4:42: 0	2.700	1057.000	46.11	5.000
45	4:45: 0	2.750	1062.000	46.11	5.000
46	4:48: 0	2.800	1065.000	46.11	3.000
47	4:51: 0	2.850	1067.000	46.11	2.000
48	4:54: 0	2.900	1068.000	46.11	1.000
49	4:57: 0	2.950	1069.000	46.11	1.000
50	5: 0: 0	3.000	1069.000	46.11	0.000
51	5: 3: 0	3.050	1069.000	46.11	0.000

#3

TKT 7049
I

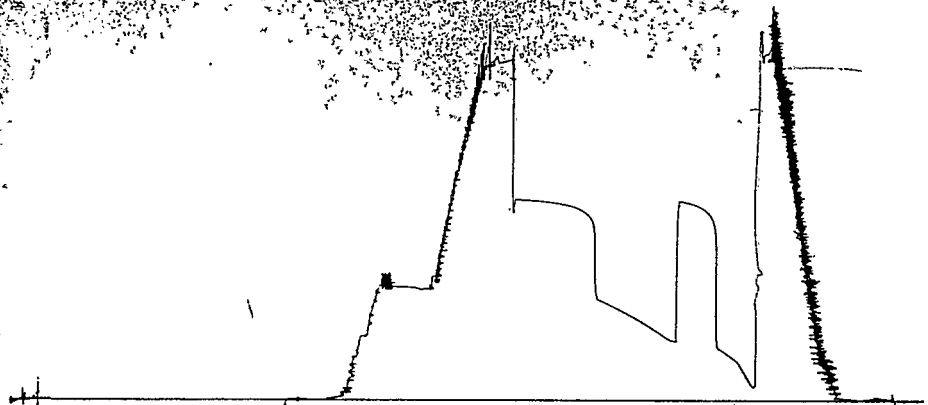


5466

TKT 7049

9L3A

0



WESTERN TESTERS INC.
SUBSURFACE PRESSURE SURVEY

DATE : 11-7-86 TICKET : 7050
CUSTOMER : RAYMOND GOODIN TRUST LEASE : MORRIS 'A'
WELL : #1 TEST: 4 GEOLOGIST : W. NIGH
ELEVATION : 1319 KB FORMATION : MAQUOKETA
SECTION : 33 TOWNSHIP : 16S
RANGE : 3W COUNTY : SALINE STATE : KANSAS
GAUGE SN# : 5666 RANGE : 3950 CLOCK : 12

INTERVAL FROM : 3333 TO : 3358 TOTAL DEPTH : 3488
DEPTH OF SELECTIVE ZONE :
PACKER DEPTH : 3333 SIZE : 6.63
PACKER DEPTH : 3358 SIZE : 6.63
PACKER DEPTH : SIZE :
PACKER DEPTH : SIZE :

DRILLING CON. : RED TIGER RIG#7
MUD TYPE : CHEMICAL VISCOSITY : 55
WEIGHT : 9.9 WATER LOSS (CC) : 10.4
CHLORIDES (PPM) : 1800
JARS-MAKE : WTC SERIAL NUMBER : 412
DID WELL FLOW ? : NO REVERSED OUT ? : NO

DRILL COLLAR LENGTH : 0 FT I.D. inch : 0.00
WEIGHT PIPE LENGTH : 358 FT I.D. inch : 3.38
DRILL PIPE LENGTH : 2950 FT I.D. inch : 4.00
TEST TOOL LENGTH : 25 FT TOOL SIZE : 4.50
ANCHOR LENGTH : 25 FT ANCHOR SIZE : 5.50
SURFACE CHOKE SIZE : .75 IN BOTTOM CHOKE SIZE : .75
MAIN HOLE SIZE : 7.875 IN TOOL JOINT SIZE : 4.5 IF

BLOW COMMENT #1 : 1/4 INCH BLOW THROUGHOUT THE INITIAL FLOW.
BLOW COMMENT #2 : VERY WEAK BLOW THROUGHOUT THE FINAL FLOW.
BLOW COMMENT #3 :
BLOW COMMENT #4 :

RECOVERED * : * 7 FT OF: MUD/WITH RAINBOW OF OIL IN TOP OF TOOL

Total Barrels Fluid = 0.08
Total Fluid Prod Rate = 1.24 BFPD
Indicated Wtr Rate = 1.07 BWPD

REMARK 1 :
REMARK 2 :
REMARK 3 :
REMARK 4 :

SET PACKER(S) :	11:00 AM	TIME STARTED OFF BOTTOM :	2:00 PM
WELL TEMPERATURE :	111		
INITIAL HYDROSTATIC PRESSURE		(A)	1788
INITIAL FLOW PERIOD MIN:	30	(B)	42 PSI TO (C) : 44
INITIAL CLOSED IN PERIOD MIN:	30	(D)	920
FINAL FLOW PERIOD MIN:	60	(E)	56 PSI TO (F) : 47
FINAL CLOSED IN PERIOD MIN:	60	(G)	952
FINAL HYDROSTATIC PRESSURE		(H)	1768

WESTERN TESTERS INC.
WICHITA - KANSAS

Pressure Transient Report

COMPANY : RAYMOND GOODIN TRUST
RIG : SALINE-KANSAS
FIELD : MORRIS 'A'
WELL : #1
DATE : 11-7-86
GAUGE NO : 5666

OPERATIONAL COMMENTS

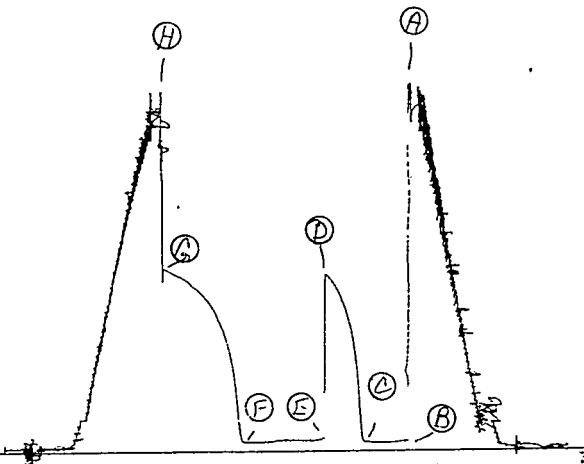
COMPANY : RAYMOND GOODIN TRUST
 WELL : #1
 GAUGE # : 5666
 DATE : 7/11/86

FIELD : MORRIS 'A'
 JOB # : 7050
 DEPTH : 3488
 TEST :

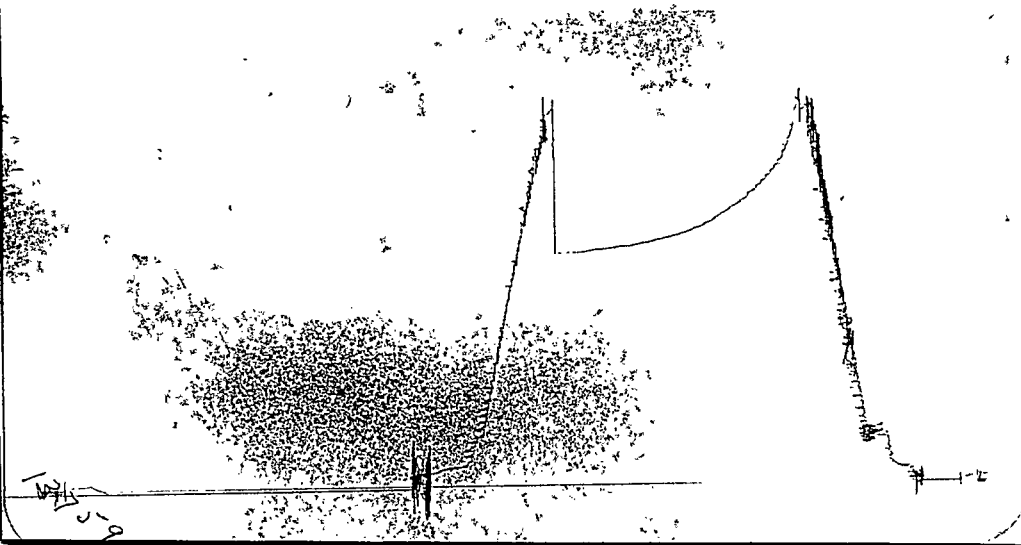
DATA No.	REAL TIME HR:MN:SS	ELAPSE TIME DELTA HOURS	PRESSURE PSIG	TEMP DEG F	DELTA P Pi-P(i-1)
1	11: 0: 0	0.000	42.000	43.89	0.000
2	11: 4: 60	0.083	42.000	43.89	0.000
3	11:10: 1	0.167	42.000	43.89	0.000
4	11:15: 0	0.250	42.000	43.89	0.000
5	11:19:60	0.333	42.000	43.89	0.000
6	11:25: 1	0.417	43.000	43.89	1.000
7	11:30: 0	0.500	44.000	43.89	1.000
8	11:33: 0	0.550	236.000	43.89	192.000
9	11:36: 0	0.600	467.000	43.89	231.000
10	11:39: 0	0.650	603.000	43.89	136.000
11	11:42: 0	0.700	681.000	43.89	78.000
12	11:45: 0	0.750	747.000	43.89	66.000
13	11:48: 0	0.800	804.000	43.89	57.000
14	11:51: 0	0.850	842.000	43.89	38.000
15	11:54: 0	0.900	876.000	43.89	34.000
16	11:57: 0	0.950	904.000	43.89	28.000
17	12: 0: 0	1.000	920.000	43.89	16.000
18	12: 1: 1	1.017	56.000	43.89	-864.000
19	12: 4: 60	1.083	56.000	43.89	0.000
20	12:10: 1	1.167	56.000	43.89	0.000
21	12:15: 0	1.250	56.000	43.89	0.000
22	12:19:60	1.333	57.000	43.89	1.000
23	12:25: 1	1.417	57.000	43.89	0.000
24	12:30: 0	1.500	57.000	43.89	0.000
25	12:34:60	1.583	56.000	43.89	-1.000
26	12:40: 1	1.667	48.000	43.89	-8.000
27	12:45: 0	1.750	47.000	43.89	-1.000
28	12:49:60	1.833	47.000	43.89	0.000
29	12:55: 1	1.917	47.000	43.89	0.000
30	13: 0: 0	2.000	47.000	43.89	0.000
31	13: 3: 0	2.050	185.000	43.89	138.000
32	13: 5: 60	2.100	359.000	43.89	174.000
33	13: 9: 0	2.150	473.000	43.89	114.000
34	13:12: 0	2.200	561.000	43.89	88.000
35	13:15: 0	2.250	623.000	43.89	62.000
36	13:18: 0	2.300	674.000	43.89	51.000
37	13:21: 0	2.350	721.000	43.89	47.000
38	13:24: 0	2.400	756.000	43.89	35.000
39	13:27: 0	2.450	786.000	43.89	30.000
40	13:30: 0	2.500	810.000	43.89	24.000
41	13:33: 0	2.550	830.000	43.89	20.000
42	13:36: 0	2.600	850.000	43.89	20.000
43	13:39: 0	2.650	864.000	43.89	14.000
44	13:42: 0	2.700	886.000	43.89	22.000
45	13:45: 0	2.750	900.000	43.89	14.000
46	13:48: 0	2.800	912.000	43.89	12.000
47	13:51: 0	2.850	922.000	43.89	10.000
48	13:54: 0	2.900	931.000	43.89	9.000
49	13:57: 0	2.950	942.000	43.89	11.000
50	14: 0: 0	3.000	952.000	43.89	10.000

TK4 7050

I



TKF 7050
Below Straddle



TKF 7050

131

TKF 7050

0

