

# MILLER TESTING COMPANY

Box 547

GREAT BEND, KANSAS

Company A. SCOTT RITCHIE

Lease and Well No. YOUNGER #1

County ELLIS State KANSAS Date JANUARY 10, 1977

Formation Test No. 1 Total Depth 3281 Elev. 1989 KB

Interval Tested 3254 To 3281 Anchor Length 27'

Size Hole 7 7/8 Size Drill Pipe 4 1/2 FH Size Packer 6 3/4

Mud Weight 9.8 Viscosity 40 Water Loss 9.2 c.c. Bottom Hole Temp. 104 °F

Chokes: Top 1/2 Bottom 1/2 Ticket No. 15127

Length of Drill Collar 315' I. D. 2.25 Length Flexweight 948' I. D. 2.76

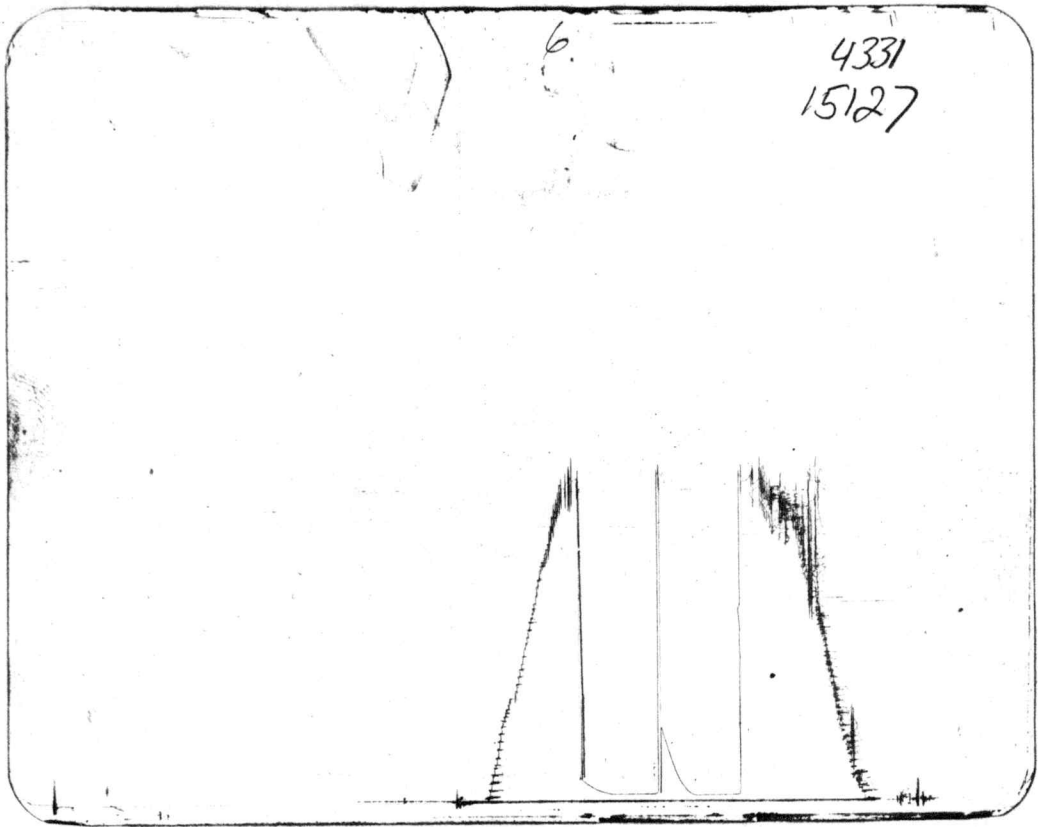
## RECOVERY

WEAK BLOW DIED IN 25 MINUTES. FLUSHED TOOL. NO HELP.

30 FEET OF MUD.

Lease and Well No. YOUNGER #1 7-11-S-17W NW NE NE.

Formation Test No. 1



Tool Open: 1st Flow hr. 30 mins: Shut-in Initial hr. 30 min: 2nd Flow hr. 30 min: Shut-in Final hr. 30 min

	Field Reading	Corrected Reading
(A) Initial Hydrostatic Pressure	<u>1761</u>	<u>1761</u>
(B) Initial 1st Flow Pressure	<u>32</u>	<u>39</u>
(C) Final 1st Flow Pressure	<u>32</u>	<u>39</u>
(D) Initial Shut-in Pressure	<u>403</u>	<u>414</u>
(E) Initial 2nd Flow Pressure	<u>43</u>	<u>39</u>
(F) Final 2nd Flow Pressure	<u>54</u>	<u>39</u>
(G) Final Shut-in Pressure	<u>120</u>	<u>131</u>
(H) Final Hydrostatic Pressure	<u>1740</u>	<u>1740</u>

15127

# MILLER TESTING COMPANY

Box 547

GREAT BEND, KANSAS

Company A. SCOTT RITCHIE

Lease and Well No. YOUNGER #1

County ELLIS State KANSAS Date JANUARY 11, 1977

Formation Test No. 2 Total Depth 3314 Elev. 1989 KB

Interval Tested 3280 To 3314 Anchor Length 34'

Size Hole 7 7/8 Size Drill Pipe 4 1/2 FH Size Packer 6 3/4

Mud Weight 9.8 Viscosity 40 Water Loss 9.2 c.c. Bottom Hole Temp. 104 °F

Chokes: Top 1/2 Bottom 1/2 Ticket No. 15128

Length of Drill Collar 315' I. D. 2.25 Length Flexweight 948' I. D. 2.76

## RECOVERY

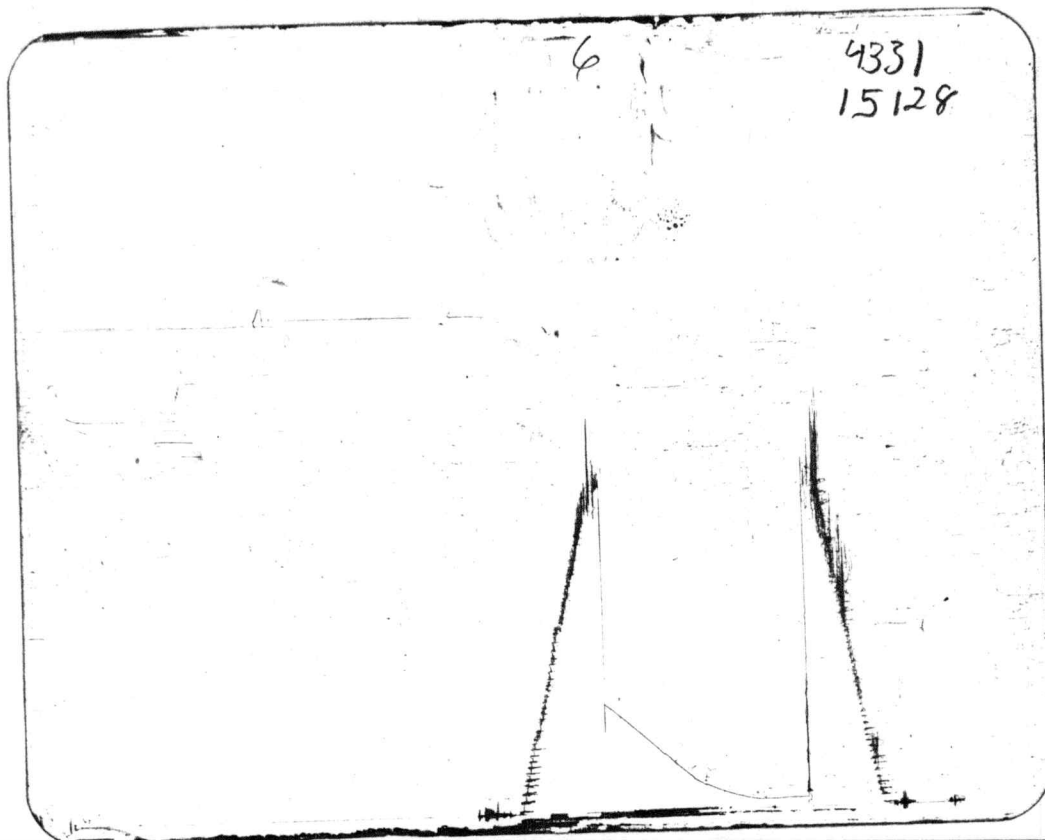
FAIR DECREASING BLOW. DIED IN 28 MINUTES.

50 FEET OF MUD.

\*SHUT-IN TOOL WAS ROTATED TO SECOND FLOW CYCLE WHEN TOOL REACHED BOTTOM.  
ROTATED TOOL FOR SECOND FLOW AND GOT BACKLASH. TOOL WAS OPEN 30  
MINUTES AND SHUT-IN FOR 1 HOUR AND 30 MINUTES.

Lease and Well No. YOUNGER #1 7-11-S-17W NW NE NE

Formation Test No. 2



Tool Open: 1st Flow 30 hrs. 30 mins: Shut-in Initial 45 hr. 45 min: 2nd Flow 30 hr. 30 min: Shut-in Final 45 hr. 45 min

	Field Reading	Corrected Reading
(A) Initial Hydrostatic Pressure	<u>1888</u>	<u>1814</u>
(B) Initial 1st Flow Pressure	<u>54</u>	<u>52</u>
(C) Final 1st Flow Pressure	<u>54</u>	<u>52</u>
(D) Initial Shut-in Pressure	<u>131</u>	<u>596</u>
(E) Initial 2nd Flow Pressure	<u>NONE TAKEN</u>	<u>NONE TAKEN</u>
(F) Final 2nd Flow Pressure	<u>NONE TAKEN</u>	<u>NONE TAKEN</u>
(G) Final Shut-in Pressure	<u>NONE TAKEN</u>	<u>NONE TAKEN</u>
(H) Final Hydrostatic Pressure	<u>1803</u>	<u>1795</u>

15128

# MILLER TESTING COMPANY

Box 547

## GREAT BEND, KANSAS

Company A. SCOTT RITCHIE  
Lease and Well No. YOUNGER #1  
County ELLIS State KANSAS Date JANUARY 11, 1977

Formation Test No. 3 Total Depth 3353 Elev. 1989 KB  
Interval Tested 3309 To 3353 Anchor Length 44'  
Size Hole 7 7/8 Size Drill Pipe 4 1/2 FH Size Packer 6 3/4  
Mud Weight 9.8 Viscosity 45 Water Loss 13.2 c.c. Bottom Hole Temp. 108 °F  
Chokes: Top 1/2 Bottom 1/2 Ticket No. 15129  
Length of Drill Collar 315' I. D. 2.25 Length Flexweight 948' I. D. 2.76

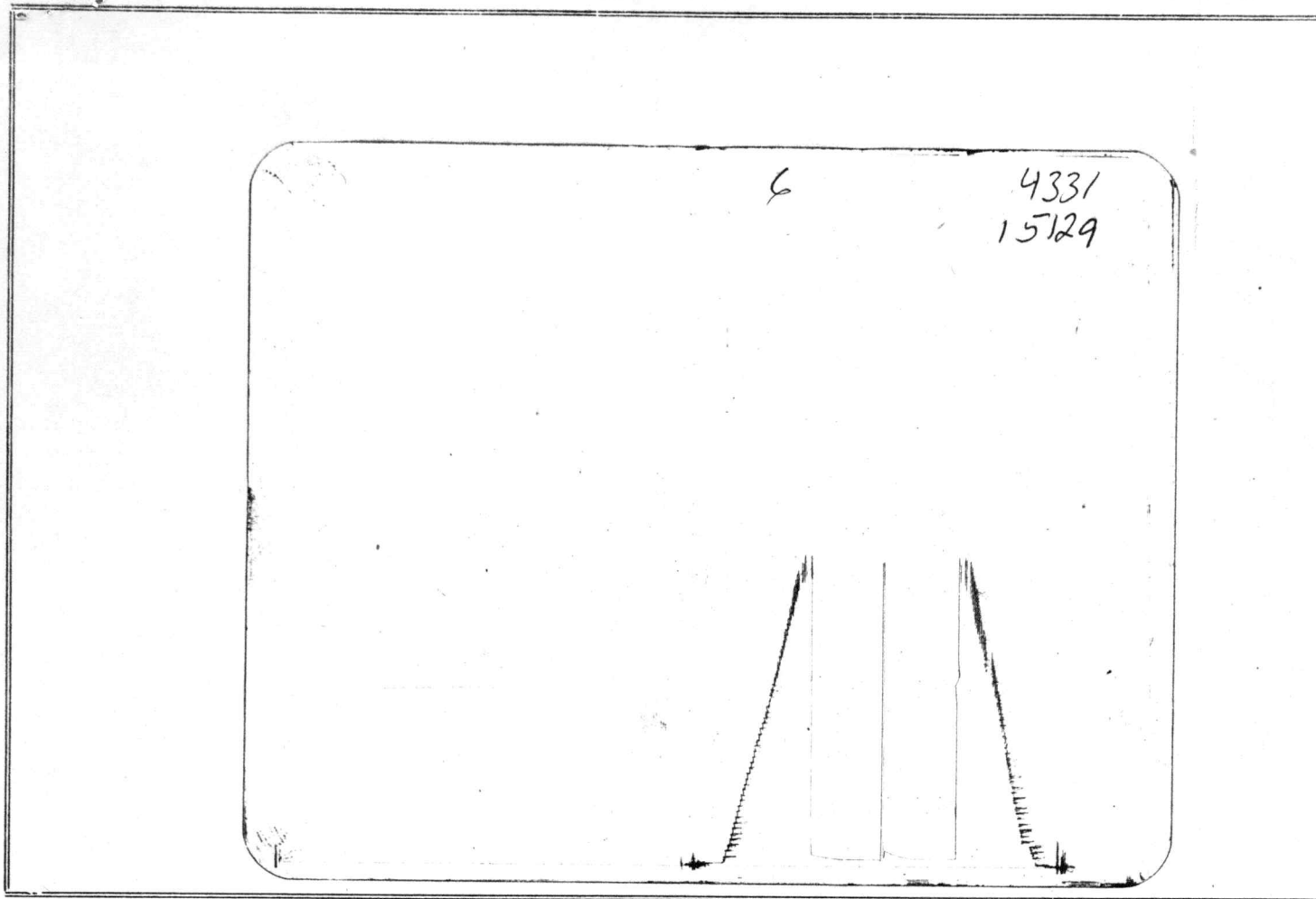
### RECOVERY

WEAK BLOW. DIED INSTANTLY. FLUSHED TOOL. NO HELP.

5 FEET OF MUD.

Lease and Well No. YOUNGER #1 7-11-S-17W NW NE NE

Formation Test No. 3



Tool Open: 1st Flow      hr. 30 mins: Shut-in Initial      hr. 30 min: 2nd Flow      hr. 30 min: Shut-in Final      hr. 30 min

	Field Reading	Corrected Reading
(A) Initial Hydrostatic Pressure	<u>1793</u>	<u>1824</u>
(B) Initial 1st Flow Pressure	<u>43</u>	<u>50</u>
(C) Final 1st Flow Pressure	<u>43</u>	<u>50</u>
(D) Initial Shut-in Pressure	<u>98</u>	<u>98</u>
(E) Initial 2nd Flow Pressure	<u>43</u>	<u>50</u>
(F) Final 2nd Flow Pressure	<u>43</u>	<u>50</u>
(G) Final Shut-in Pressure	<u>76</u>	<u>74</u>
(H) Final Hydrostatic Pressure	<u>1772</u>	<u>1803</u>
		15129

# MILLER TESTING COMPANY

Box 547

GREAT BEND, KANSAS

Company A. SCOTT RITCHIE

Lease and Well No. YOUNGER #1

County ELLIS State KANSAS Date JANUARY 13, 1977

Formation Test No. 4 Total Depth 3550 Elev. 1989 KB

Interval Tested 3515 To 3550 Anchor Length 35'

Size Hole 7 7/8 Size Drill Pipe 4 1/2 FH Size Packer 6 3/4

Mud Weight 9.9 Viscosity 47 Water Loss 16.2 c.c. Bottom Hole Temp. 109 °F

Chokes: Top 1/2 Bottom 1/2 Ticket No. 15130

Length of Drill Collar 315' I. D. 2.25 Length Flexweight 948' I. D. 2.76

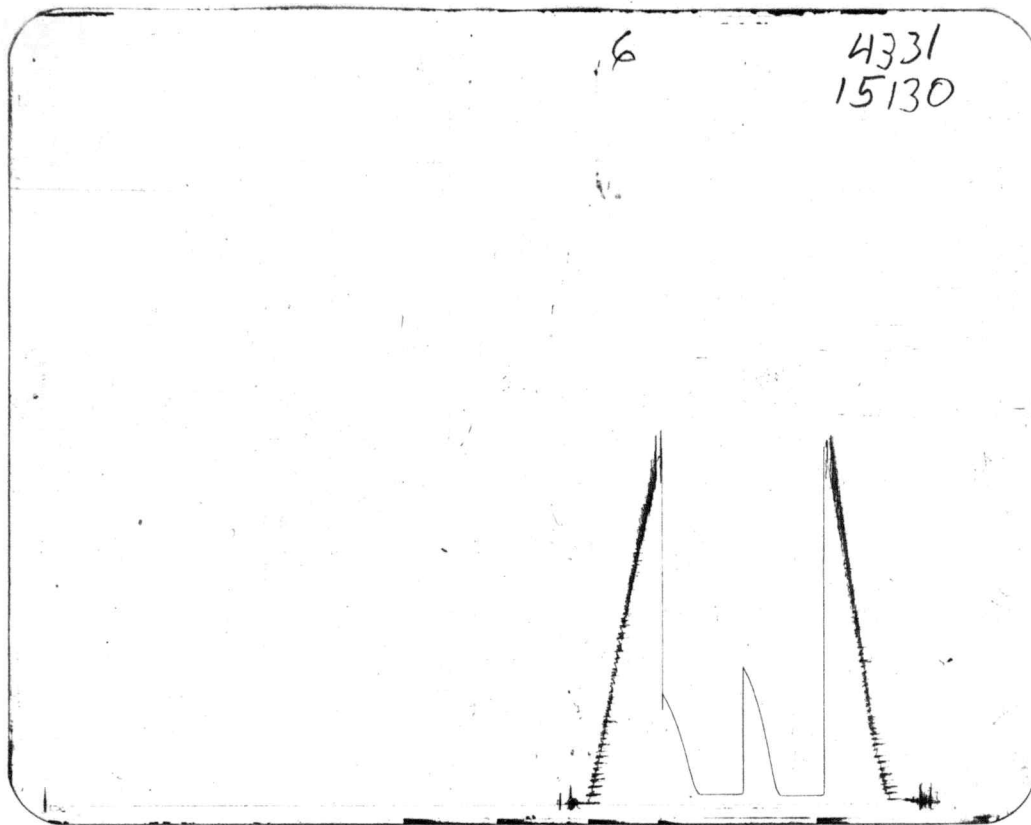
## RECOVERY

WEAK BLOW. DIED IN 2 MINUTES.

20 FEET OF MUD.

Lease and Well No. YOUNGER #1 7-11-S-17W NW NE NE

Formation Test No. 4



Tool Open: 1st Flow      hr. 30 mins: Shut-in Initial      hr. 30 min: 2nd Flow      hr. 30 min: Shut-in Final      hr. 30 min

	Field Reading	Corrected Reading
(A) Initial Hydrostatic Pressure	<u>1909</u>	<u>1898</u>
(B) Initial 1st Flow Pressure	<u>54</u>	<u>50</u>
(C) Final 1st Flow Pressure	<u>54</u>	<u>50</u>
(D) Initial Shut-in Pressure	<u>750</u>	<u>760</u>
(E) Initial 2nd Flow Pressure	<u>54</u>	<u>54</u>
(F) Final 2nd Flow Pressure	<u>54</u>	<u>54</u>
(G) Final Shut-in Pressure	<u>609</u>	<u>609</u>
(H) Final Hydrostatic Pressure	<u>1898</u>	<u>1877</u>

15130

# MILLER TESTING COMPANY

Box 547

GREAT BEND, KANSAS

Company A. SCOTT RITCHIE

Lease and Well No. YOUNGER #1

County ELLIS State KANSAS Date JANUARY 14, 1977

Formation Test No. 5 Total Depth 3584 Elev. 1989 KB

Interval Tested 3550 To 3584 Anchor Length 34'

Size Hole 7 7/8 Size Drill Pipe 4 1/2 FH Size Packer 6 3/4

Mud Weight 9.9 Viscosity 47 Water Loss 16.2 c.c. Bottom Hole Temp. 109 °F

Chokes: Top 1/2 Bottom 1/2 Ticket No. 15131

Length of Drill Collar 315' I. D. 2.25 Length Flexweight 948' I. D. 2.76

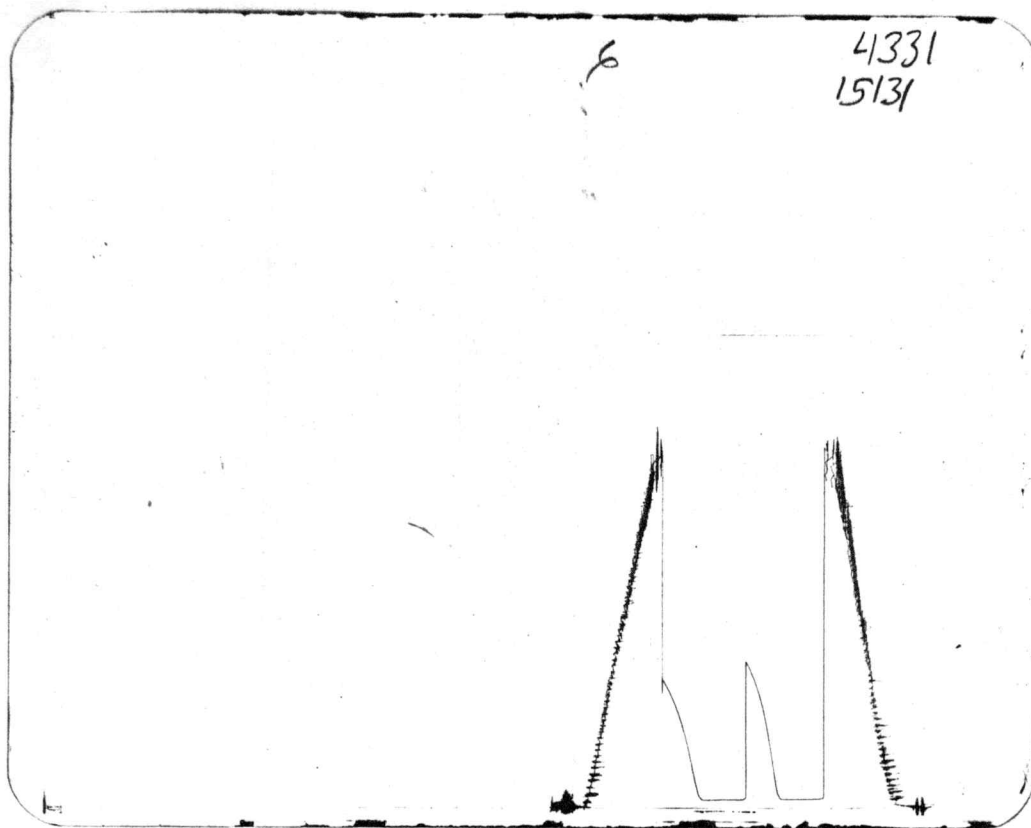
## RECOVERY

WEAK BLOW. DIED IN 4 MINUTES.

30 FEET OF MUD. NO SHOW OF OIL.

Lease and Well No. YOUNGER #1 7-14-S-17W NW NE NE

Formation Test No. 5



Tool Open: 1st Flow hr. 30 mins: Shut-in Initial hr. 30 min: 2nd Flow hr. 30 min: Shut-in Final hr. 30 min.

	Field Reading	Corrected Reading
(A) Initial Hydrostatic Pressure	<u>1919</u>	<u>1919</u>
(B) Initial 1st Flow Pressure	<u>43</u>	<u>52</u>
(C) Final 1st Flow Pressure	<u>54</u>	<u>52</u>
(D) Initial Shut-in Pressure	<u>803</u>	<u>814</u>
(E) Initial 2nd Flow Pressure	<u>43</u>	<u>52</u>
(F) Final 2nd Flow Pressure	<u>43</u>	<u>52</u>
(G) Final Shut-in Pressure	<u>717</u>	<u>713</u>
(H) Final Hydrostatic Pressure	<u>1898</u>	<u>1898</u>

15131