

MILLER TESTING COMPANY

Box 547

GREAT BEND, KANSAS

Company D G HANSEN TRUST

Lease and Well No. HAIR - LUNDY #1

County NESS State KANSAS Date JUNE 10, 1977

Formation Test No. 1 Total Depth 4336 Elev. _____
Interval Tested 4301 To 4336 Anchor Length 35'
Size Hole 7 7/8 Size Drill Pipe 4 1/2 F H Size Packer 6 3/4
Mud Weight 9.8 Viscosity 38 Water Loss 17.6 c.c. Bottom Hole Temp. 110 °F
Chokes: Top 1/2 Bottom 1/2 Ticket No. 14945
Length of Drill Collar _____ I. D. _____ Length Flexweight 813.83 I. D. 2.76

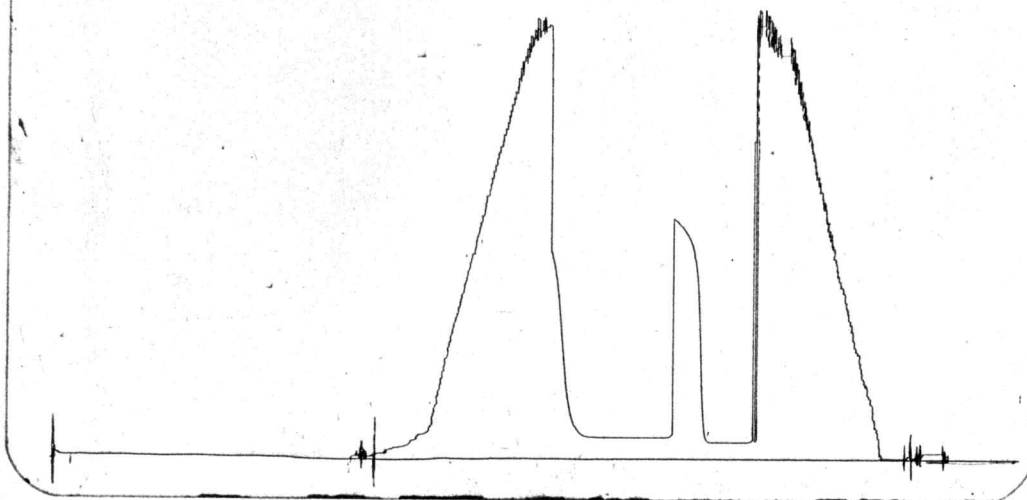
RECOVERY

WEAK BLOW THROUGHOUT FIRST OPENING. VERY WEAK BLOW ON
SECOND OPENING. DIED IN 50 MINUTES INTO SECOND OPENING
INTERMITTENT BLOW AFTER THAT.

120 FEET OF GAS CUT MUD WITH OIL SPECKS
600 FEET OF GAS IN PIPE

Lease and Well No. HAIR - LUNDY #1 2-205-21W Formation Test No. 1

6233
14945
6



Tool Open: 1st Flow 30 hr. 30 mins: Shut-in Initial 30 hr. 30 min: 2nd Flow 1 hr. min: Shut-in Final hr. 30 min

	Field Reading	Corrected Reading
(A) Initial Hydrostatic Pressure	<u>2217</u>	<u>2221</u>
(B) Initial 1st Flow Pressure	<u>91</u>	<u>89</u>
(C) Final 1st Flow Pressure	<u>91</u>	<u>89</u>
(D) Initial Shut-in Pressure	<u>1234</u>	<u>1234</u>
(E) Initial 2nd Flow Pressure	<u>110</u>	<u>112</u>
(F) Final 2nd Flow Pressure	<u>112</u>	<u>114</u>
(G) Final Shut-in Pressure	<u>1065</u>	<u>1067</u>
(H) Final Hydrostatic Pressure	<u>2217</u>	<u>2207</u>

14945

MILLER TESTING COMPANY

Box 547

GREAT BEND, KANSAS

Company D G HANSEN TRUST

Lease and Well No. HAIR - LUNDY #1

County NESS State KANSAS Date JUNE 11, 1977

Formation Test No. 2 Total Depth 4420 Elev. _____

Interval Tested 4388 To 4420 Anchor Length 32'

Size Hole 7 7/8 Size Drill Pipe 4 1/2 F H Size Packer 6 3/4

Mud Weight 9.9 Viscosity 50 Water Loss 8 c.c. Bottom Hole Temp. 113 °F

Chokes: Top 1/2 Bottom 1/2 Ticket No. 14946

Length of Drill Collar _____ I. D. _____ Length Flexweight 813.83 I. D. 2.76

RECOVERY

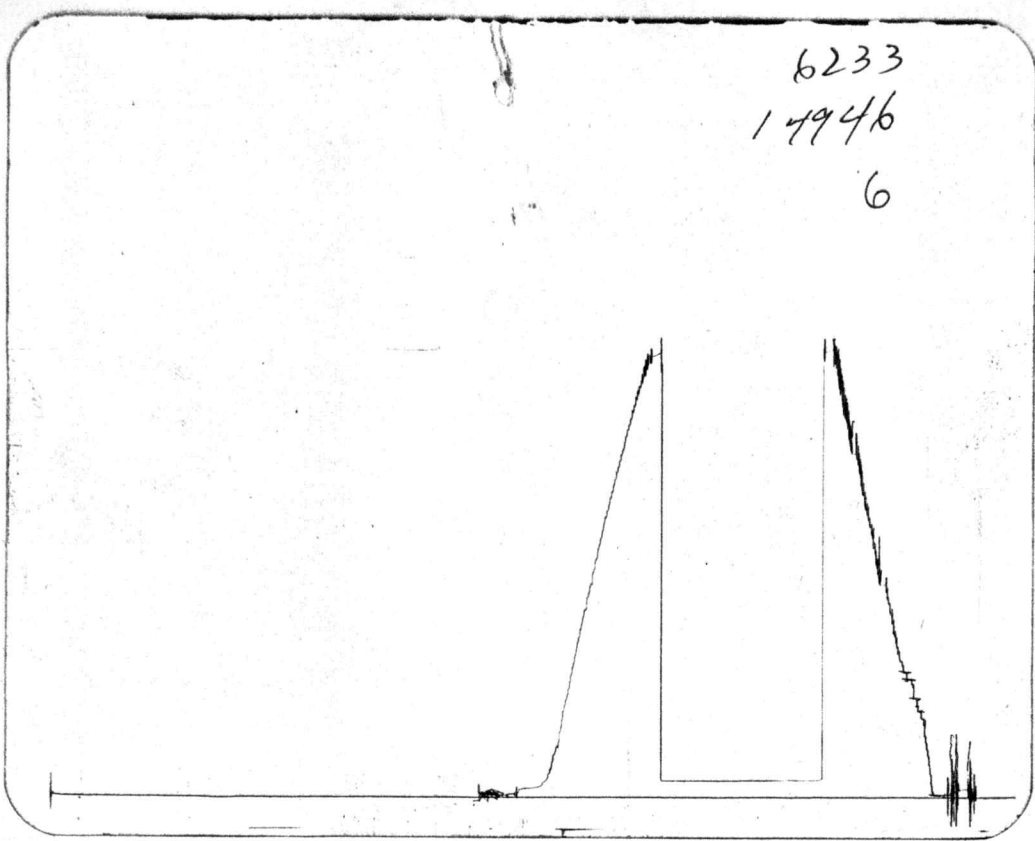
WEAK BLOW (VERY WEAK) THROUGHOUT FIRST OPENING. VERY WEAK
BLOW ON SECOND OPENING DIED IN 6 MINUTES

20 FEET OF OIL SPECKED MUD WITH A SHOW OF FREE OIL IN THE
TOP AT THE TOOL

Lease and Well No. HAIR - LUNDY #1 2-205-21W

Formation Test No. 2

6233
14946
6



Tool Open: 1st Flow hr. 30 mins: Shut-in Initial hr. 30 min: 2nd Flow hr. 30 min: Shut-in Final hr. 30 min.

	Field Reading	Corrected Reading
(A) Initial Hydrostatic Pressure	<u>2267</u>	<u>2281</u>
(B) Initial 1st Flow Pressure	<u>81</u>	<u>89</u>
(C) Final 1st Flow Pressure	<u>81</u>	<u>89</u>
(D) Initial Shut-in Pressure	<u>81</u>	<u>89</u>
(E) Initial 2nd Flow Pressure	<u>81</u>	<u>89</u>
(F) Final 2nd Flow Pressure	<u>81</u>	<u>89</u>
(G) Final Shut-in Pressure	<u>81</u>	<u>89</u>
(H) Final Hydrostatic Pressure	<u>2247</u>	<u>2271</u>

14946

MILLER TESTING COMPANY

Box 547

GREAT BEND, KANSAS

Company D G HANSEN TRUST

Lease and Well No. HAIR - LUNDY #1

County NESS State KANSAS Date JUNE 12, 1977

Formation Test No. 3 Total Depth 4430 Elev. _____

Interval Tested 4409 To 4430 Anchor Length 21'

Size Hole 7 7/8 Size Drill Pipe 4 1/2 F H Size Packer 6 3/4

Mud Weight 9.9 Viscosity 50 Water Loss 8 c.c. Bottom Hole Temp. 108 °F

Chokes: Top 1/2 Bottom 1/2 Ticket No. 14947

Length of Drill Collar _____ I. D. _____ Length Flexweight 813.83 I. D. 2.76

RECOVERY

GOOD BLOW BUILDING IN 10 MINUTES. STRONG BLOW THROUGHOUT
SECOND OPENING.

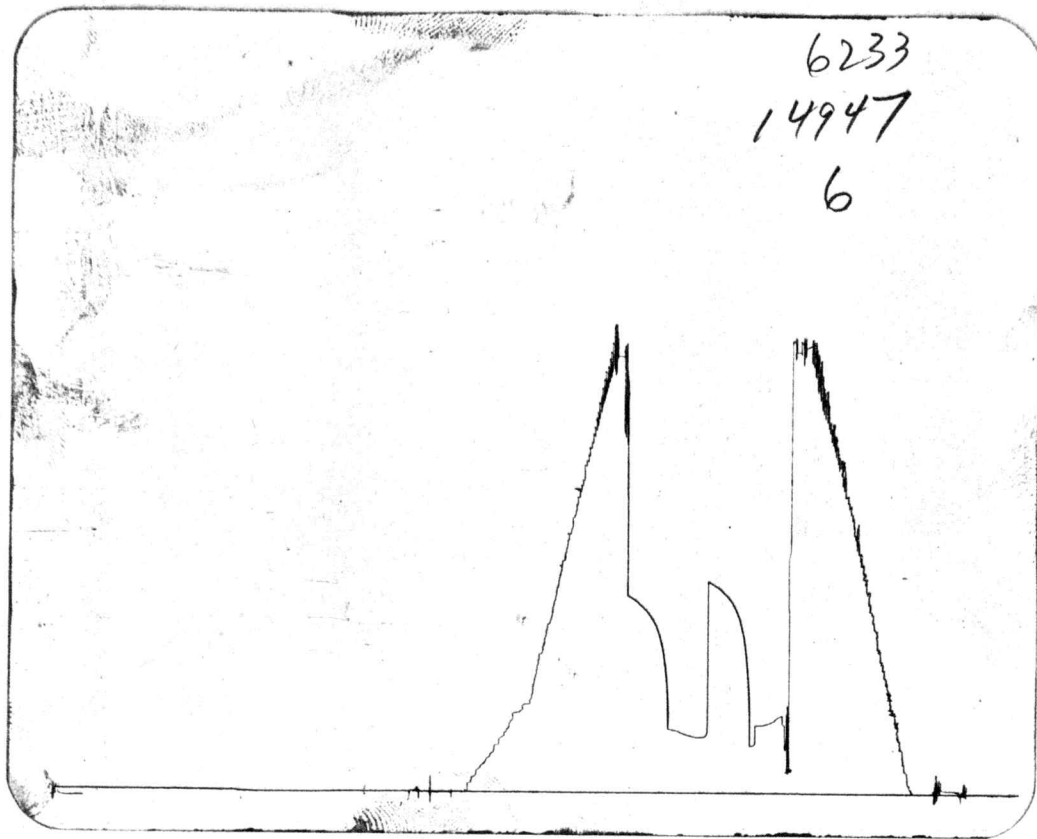
60 FEET OF GAS IN PIPE
465 FEET OF OIL 30° API
60 FEET OF MUDDY OIL (3% MUD, 5% WATER, 92% OIL)
375 FEET OF VERY HEAVY OIL CUT MUD (20% WATER, 20% MUD 60% OIL)

Lease and Well No. HAIR - LUNDY #1

2-205-24W

Formation Test No. _____

6233
14947
6



Tool Open: 1st Flow hr. 30 mins: Shut-in Initial hr. 30 min: 2nd Flow hr. 30 min: Shut-in Final hr. 30 mi

	Field Reading	Corrected Reading
(A) Initial Hydrostatic Pressure	<u>2297</u>	<u>2301</u>
(B) Initial 1st Flow Pressure	<u>224</u>	<u>228</u>
(C) Final 1st Flow Pressure	<u>244</u>	<u>244</u>
(D) Initial Shut-in Pressure	<u>1085</u>	<u>1085</u>
(E) Initial 2nd Flow Pressure	<u>285</u>	<u>291</u>
(F) Final 2nd Flow Pressure	<u>325</u>	<u>331</u>
(G) Final Shut-in Pressure	<u>1012</u>	<u>1014</u>
(H) Final Hydrostatic Pressure	<u>2217</u>	<u>2223</u>

14947