

SUPERIOR TESTERS ENTERPRISES INC.

WELL IDENTIFICATION DATA

COMPANY : HELLAR DRILLING COMPANY WELL NAME : CHRISTIAN CHURCH #3  
ADDRESS : 125 N.MARKET#1422,WICHITA LOCATION : N/W-N/E-S/W 5-16S-27W  
STATE & COUNTY : KANSAS,LANE FIELD :  
ELEV.(GR) : (KB) : TEST DATE : 10-9-1995

EQUIPMENT AND HOLE DATA

FORMATION TESTED : MARMATON DRILL PIPE LENGTH(ft) : 3931  
TEST INT. KB : 4204 to 4285 DRILL PIPE O.D.(in) : 3.82  
ANCHOR LENGTH(ft) : 81 WEIGHT PIPE LENGTH(ft) : 254  
TYPE OF TEST : Conventional WEIGHT PIPE ID : 2.75  
TOTAL DEPTH(ft-kg) : 4285 DRILL COLLAR LENGTH(ft) :  
MAIN HOLE SIZE(in) : 7 7/8 DRILL COLLAR I.D.(in) : 2.259  
MUD WEIGHT : 8.8 TOP PACKER DEPTH(kb) : 4199  
MUD VISCOSITY : 44 BOTTOM PACKER DEPTH(kb) : 4204  
MUD CHLORIDES : 3000 DUAL PACKERS :  
SURFACE CHOKE : 3/4 PACKER SIZE(in) : 6 3/4  
BOTTOM CHOKE(in) : 3/4 PACKER HOLD : Yes  
TOOL SIZE(O.D.) : 5 1/2 TOOL PLUG : No  
TOOL JOINT SIZE(F.H.) : 4 1/2 REVERSED OUT : No  
RESERVOIR TEMPERATURE(F) : 114 TEST TICKET NUMBER : 11370

EXTRA EQUIPMENT :

ELEMENT SERIAL NO. : 11088  
RANGE : 0 - 4400 CLOCK RANGE :  
CAL. EQU. : 1102.93 \* Defl. + 4.88

SURFACE BLOW

1st Opening : WEAK BLOW BUILT TO 12 INCHES INTO THE WATER  
2nd Opening : WEAK BLOW BUILT TO 12 INCHES IN 45 MINUTES

RECOVERY

Recovered 5 feet of VERY SLIGHTLY OIL CUT MUD 1%OIL 99%MUD  
Recovered 60 feet of SLIGHTLY OIL CUT MUD 5%OIL 95%MUD  
Recovered 60 feet of VERY HEAVY OIL CUT MUD 33%GAS 26%OIL 40%MUD 1%H2O  
Recovered 60 feet of GASSY MUDDY OIL 47%GAS 24%OIL 28%MUD 1%WATER

REMARKS :

WITNESSED BY : BOB DOUGLASS TOOL OPERATOR : GENE BUDIG

INTERPRETATION BY : SUPERIOR TESTERS ENTERPRISES INC.

SUPERIOR TESTERS ENTERPRISES INC.

SUBSURFACE PRESSURE MEASUREMENTS

COMPANY : HELLAR DRILLING COMPANY      WELL NAME : CHRISTIAN CHURCH #3  
 DATE OF TEST : 10-9-1995              LOCATION : N/W-N/E-S/W 5-16S-27W  
 DEPTH : 4279.0                          SERIAL NO. : 11088

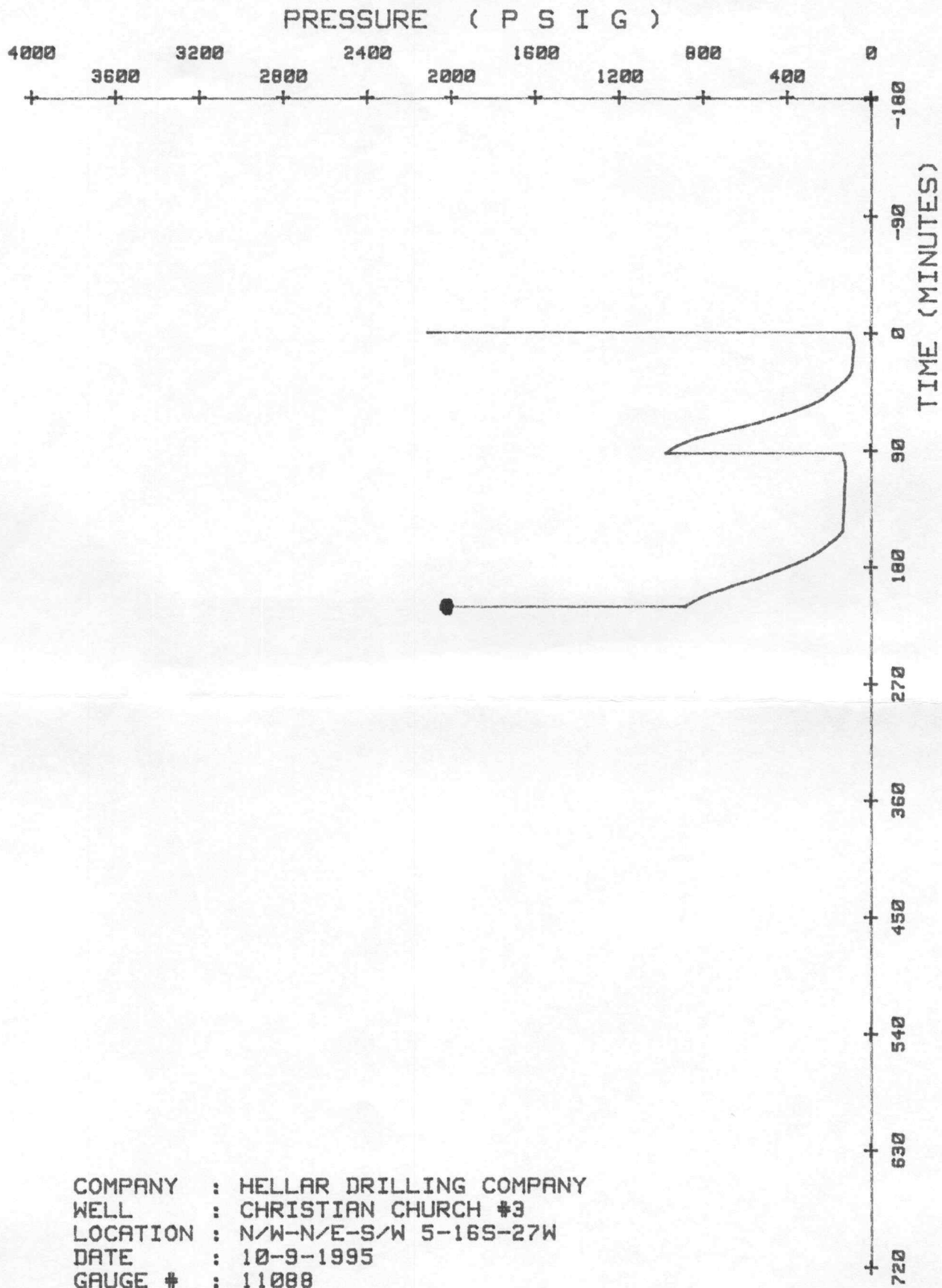
COMMENTS	TIME min	DEFL in	PRESSURE PSIG		
			----- CALC	CORR	CORRECTED
TEST NO.:1					
Depth : 4279.0 ft-kb					
-1ST HYDROSTATIC	0.0	1.913	2114.79	1.30	2116.09
- 0:00	0.0	.091	105.25	-3.82	101.42
-8:30 1ST FLOW	0.0	.092	106.35	-3.81	102.54
- 8:35	5.0	.081	94.22	-3.94	90.28
- 8:40	10.0	.075	87.60	-4.01	83.59
- 8:45	15.0	.079	92.01	-3.96	88.05
- 8:50	20.0	.082	95.32	-3.93	91.39
- 8:55	25.0	.084	97.53	-3.90	93.62
- 9:00	30.0	.086	99.73	-3.88	95.85
-9:00 END FLOW	0.0	.086	99.73	-3.88	95.85
- 9:03	3.0	.096	110.76	-3.77	107.00
- 9:06	6.0	.109	125.10	-3.61	121.48
- 9:09	9.0	.128	146.05	-3.39	142.66
- 9:12	12.0	.146	165.91	-3.18	162.72
- 9:15	15.0	.170	192.38	-2.91	189.47
- 9:18	18.0	.191	215.54	-2.66	212.88
- 9:21	21.0	.209	235.39	-2.45	232.94
- 9:24	24.0	.239	268.48	-2.11	266.38
- 9:27	27.0	.277	310.39	-1.66	308.73
- 9:30	30.0	.323	361.13	-1.13	360.00
- 9:33	33.0	.369	411.86	-.60	411.27
- 9:36	36.0	.424	472.52	.04	472.56
- 9:39	39.0	.478	532.08	.67	532.75
- 9:42	42.0	.543	603.77	.90	604.67
- 9:45	45.0	.612	679.87	.85	680.73
- 9:48	48.0	.681	755.98	.81	756.78
- 9:51	51.0	.746	827.67	.76	828.43
- 9:54	54.0	.793	879.50	.73	880.24
- 9:57	57.0	.833	923.62	.71	924.33
- 10:00	60.0	.862	955.61	.69	956.30
- 10:03	63.0	.885	980.97	.67	981.65
-10:03 1ST SHUT-IN	0.0	.885	980.97	.67	981.65
-10:03 2ND FLOW	0.0	.128	146.05	-3.39	142.66
- 10:08	5.0	.117	133.92	-3.52	130.40
- 10:13	10.0	.110	126.20	-3.60	122.60
- 10:18	15.0	.112	128.41	-3.58	124.83
- 10:23	20.0	.112	128.41	-3.58	124.83
- 10:28	25.0	.116	132.82	-3.53	129.29
- 10:33	30.0	.117	133.92	-3.52	130.40
- 10:38	35.0	.118	135.03	-3.51	131.52

SUPERIOR TESTERS ENTERPRISES INC.

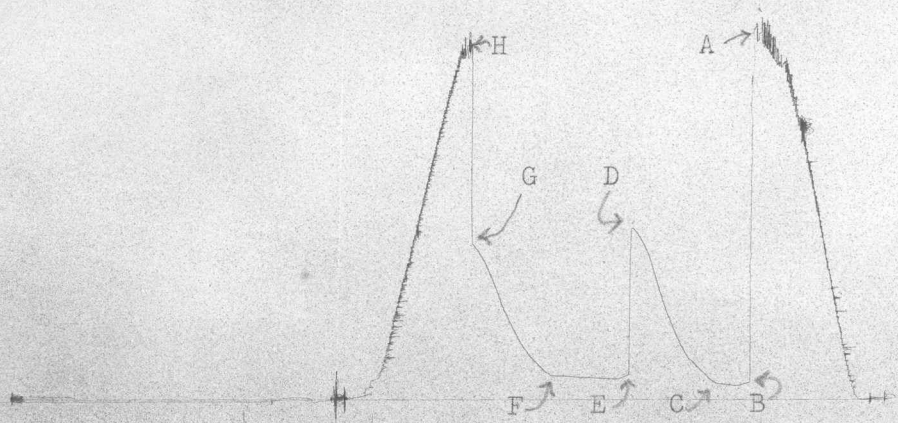
SUBSURFACE PRESSURE MEASUREMENTS

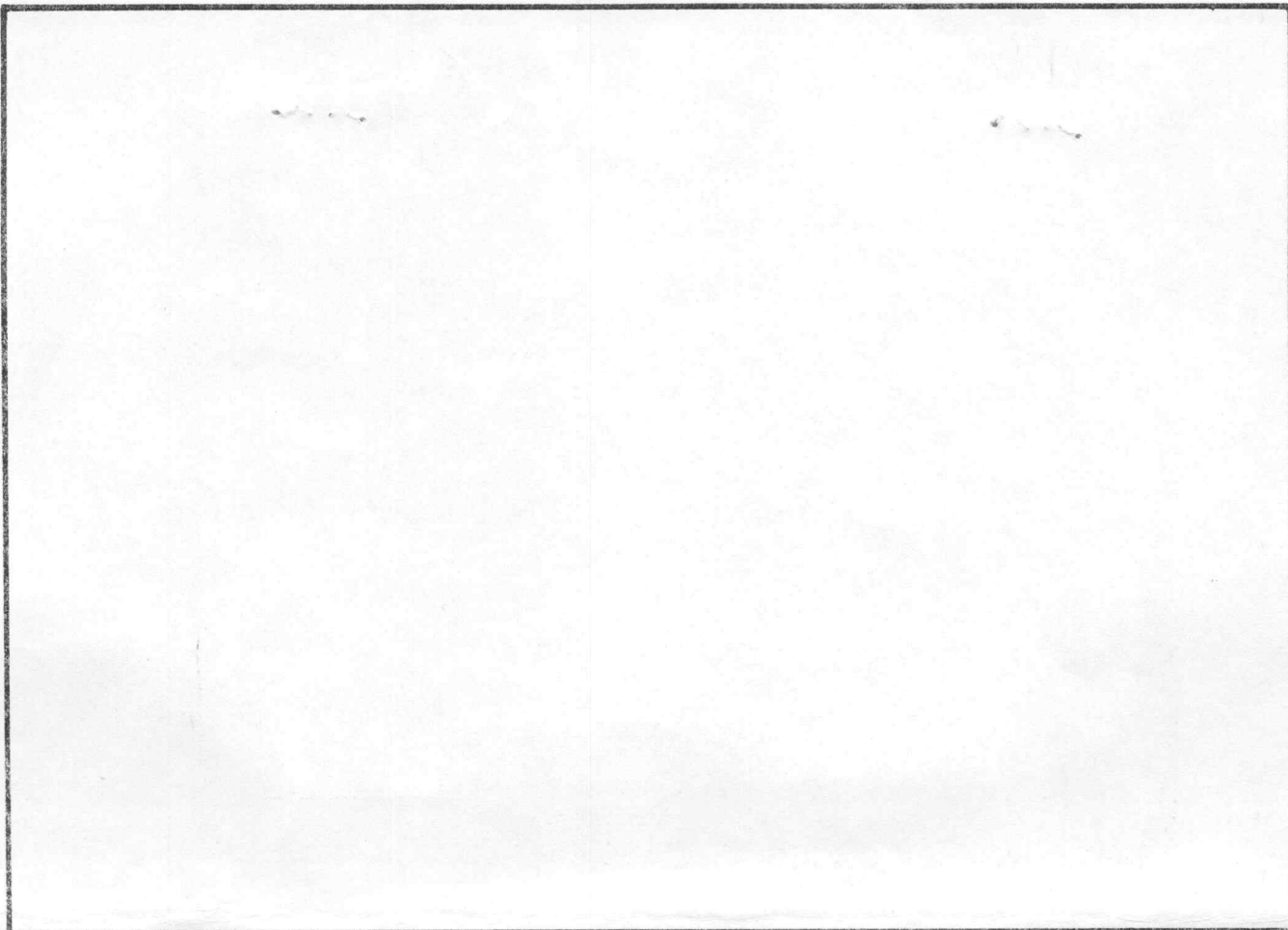
COMPANY : HELLAR DRILLING COMPANY      WELL NAME : CHRISTIAN CHURCH #3  
 DATE OF TEST : 10-9-1995              LOCATION : N/W-N/E-S/W 5-16S-27W  
 DEPTH : 4279.0                          SERIAL NO. : 11088

COMMENTS	TIME min	DEFL in	PRESSURE PSIG		
			----- CALC	CORR	CORRECTED
TEST NO.:1					
- 10:43	40.0	.119	136.13	-3.50	132.63
- 10:48	45.0	.121	138.33	-3.48	134.86
- 10:53	50.0	.122	139.44	-3.46	135.97
- 10:58	55.0	.124	141.64	-3.44	138.20
- 11:03	60.0	.125	142.75	-3.43	139.32
-11:03 END FLOW	0.0	.125	142.75	-3.43	139.32
- 11:06	3.0	.139	158.19	-3.27	154.92
- 11:09	6.0	.155	175.83	-3.08	172.75
- 11:12	9.0	.179	202.30	-2.80	199.50
- 11:15	12.0	.199	224.36	-2.57	221.79
- 11:18	15.0	.220	247.52	-2.33	245.20
- 11:21	18.0	.246	276.20	-2.02	274.18
- 11:24	21.0	.276	309.29	-1.68	307.61
- 11:27	24.0	.311	347.89	-1.27	346.62
- 11:30	27.0	.352	393.11	-.79	392.32
- 11:33	30.0	.392	437.23	-.33	436.90
- 11:36	33.0	.437	486.86	.19	487.05
- 11:39	36.0	.480	534.29	.69	534.98
- 11:42	39.0	.539	599.36	.90	600.26
- 11:45	42.0	.597	663.33	.86	664.19
- 11:48	45.0	.638	708.55	.84	709.38
- 11:51	48.0	.693	769.21	.80	770.01
- 11:54	51.0	.732	812.23	.77	813.00
- 11:57	54.0	.764	847.52	.75	848.27
- 12:00	57.0	.792	878.40	.73	879.14
- 12:01	58.0	.798	885.02	.73	885.75
-12:01 2ND SHUT-IN	0.0	.798	885.02	.73	885.75
-2ND HYDROSTATIC	0.0	1.831	2024.35	1.35	2025.69



COMPANY : HELLAR DRILLING COMPANY  
 WELL : CHRISTIAN CHURCH #3  
 LOCATION : N/W-N/E-S/W 5-16S-27W  
 DATE : 10-9-1995  
 GAUGE # : 11088





This is an actual photograph of recorder chart.

POINT	PRESSURE		
	FIELD READING	OFFICE READING	
(A) Initial Hydrostatic Mud .....	<u>2101</u>	<u>2116</u>	P.S.I.
(B) First Initial Flow Pressure .....	<u>100</u>	<u>101</u>	P.S.I.
(C) First Final Flow Pressure .....	<u>100</u>	<u>95</u>	P.S.I.
(D) Initial Closed-in Pressure .....	<u>976</u>	<u>981</u>	P.S.I.
(E) Second Initial Flow Pressure .....	<u>111</u>	<u>142</u>	P.S.I.
(F) Second Final Flow Pressure .....	<u>133</u>	<u>139</u>	P.S.I.
(G) Final Closed-in Pressure .....	<u>899</u>	<u>885</u>	P.S.I.
(H) Final Hydrostatic Mud .....	<u>2090</u>	<u>2025</u>	P.S.I.

# SUPERIOR TESTERS ENTERPRISES INC.

## WELL IDENTIFICATION DATA

COMPANY : HELLAR DRILLING COMPANY WELL NAME : CHRISTIAN CHURCH #3  
ADDRESS : 125 N.MARKET#1422,WICHITA LOCATION : N/W-N/E-S/W 5-16S-27W  
STATE & COUNTY : KANSAS,LANE FIELD :  
ELEV.(GR) : (KB) : TEST DATE : 10-10-1995

## EQUIPMENT AND HOLE DATA

FORMATION TESTED : FORT SCOTT DRILL PIPE LENGTH(ft) : 4027  
TEST INT. KB : 4363 to 4388 DRILL PIPE O.D.(in) : 3.82  
ANCHOR LENGTH(ft) : 25 WEIGHT PIPE LENGTH(ft) : 317  
TYPE OF TEST : Conventional WEIGHT PIPE ID : 2.75  
TOTAL DEPTH(ft-kb) : 4388 DRILL COLLAR LENGTH(ft) :  
MAIN HOLE SIZE(in) : 7 7/8 DRILL COLLAR I.D.(in) : 2.259  
MUD WEIGHT : 9.1 TOP PACKER DEPTH(kb) : 4358  
MUD VISCOSITY : 47 BOTTOM PACKER DEPTH(kb) : 4363  
MUD CHLORIDES : 3500 DUAL PACKERS :  
SURFACE CHOKE : 3/4 PACKER SIZE(in) : 6 3/4  
BOTTOM CHOKE(in) : 3/4 PACKER HOLD : Yes  
TOOL SIZE(O.D.) : 5 1/2 TOOL PLUG : No  
TOOL JOINT SIZE(F.H.) : 4 1/2 REVERSED OUT : No  
RESERVOIR TEMPERATURE(F) : 126 TEST TICKET NUMBER : 11371

EXTRA EQUIPMENT :

ELEMENT SERIAL NO. : 11088  
RANGE : 0 - 4400 CLOCK RANGE :  
CAL. EQU. : 1102.93 \* Defl. + 4.88

## SURFACE BLOW

1st Opening : VERY WEAK BLOW FOR 8 MINUTES AND DIED  
2nd Opening : NO BLOW

## RECOVERY

Recovered 1 feet of MUD

REMARKS :

WITNESSED BY : BOB DOUGLASS

TOOL OPERATOR : GENE BUDIG

INTERPRETATION BY : SUPERIOR TESTERS ENTERPRISES INC.

SUPERIOR TESTERS ENTERPRISES INC.

SUBSURFACE PRESSURE MEASUREMENTS

COMPANY : HELLAR DRILLING COMPANY      WELL NAME : CHRISTIAN CHURCH #3  
 DATE OF TEST : 10-10-1995              LOCATION : N/W-N/E-S/W 5-16S-27W  
 DEPTH : 4378.0                              SERIAL NO. : 11088

COMMENTS	TIME min	DEFL in	PRESSURE PSIG		
			----- CALC	CORR	----- CORRECTED
TEST NO.:2					
Depth : 4378.0 ft-kb					
-1ST HYDROSTATIC	0.0	1.978	2186.48	1.27	2187.75
-3:15 1ST FLOW	0.0	.046	55.61	-4.35	51.27
- 3:20	5.0	.035	43.48	-4.47	39.01
- 3:25	10.0	.024	31.35	-4.60	26.75
- 3:30	15.0	.020	26.94	-4.65	22.29
- 3:35	20.0	.020	26.94	-4.65	22.29
- 3:40	25.0	.020	26.94	-4.65	22.29
- 3:45	30.0	.020	26.94	-4.65	22.29
-3:45 END FLOW	0.0	.020	26.94	-4.65	22.29
- 3:50	5.0	.020	26.94	-4.65	22.29
- 3:55	10.0	.020	26.94	-4.65	22.29
- 4:00	15.0	.021	28.04	-4.64	23.41
- 4:05	20.0	.022	29.14	-4.62	24.52
- 4:10	25.0	.026	33.56	-4.58	28.98
- 4:15	30.0	.028	35.76	-4.55	31.21
-4:15 1ST SHUT-IN	0.0	.028	35.76	-4.55	31.21
-4:15 2ND FLOW	0.0	.020	26.94	-4.65	22.29
- 4:20	5.0	.020	26.94	-4.65	22.29
- 4:25	10.0	.020	26.94	-4.65	22.29
- 4:30	15.0	.020	26.94	-4.65	22.29
- 4:35	20.0	.020	26.94	-4.65	22.29
- 4:40	25.0	.020	26.94	-4.65	22.29
- 4:45	30.0	.020	26.94	-4.65	22.29
-4:45 END FLOW	0.0	.020	26.94	-4.65	22.29
- 4:50	5.0	.020	26.94	-4.65	22.29
- 4:55	10.0	.020	26.94	-4.65	22.29
- 5:00	15.0	.023	30.25	-4.61	25.63
- 5:05	20.0	.023	30.25	-4.61	25.63
- 5:10	25.0	.023	30.25	-4.61	25.63
- 5:16	31.0	.025	32.45	-4.59	27.86
-5:16 2ND SHUT-IN	0.0	.025	32.45	-4.59	27.86
-2ND HYDROSTATIC	0.0	1.906	2107.07	1.31	2108.37

PRESSURE ( P S I G )

4000 3600 3200 2800 2400 2000 1600 1200 800 400 0

TIME (MINUTES)

-180

-90

0

90

180

270

360

450

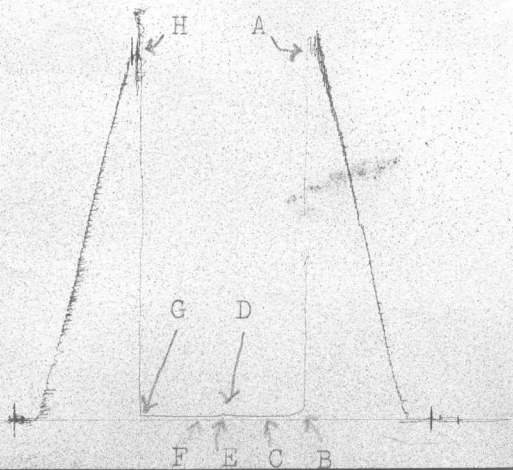
540

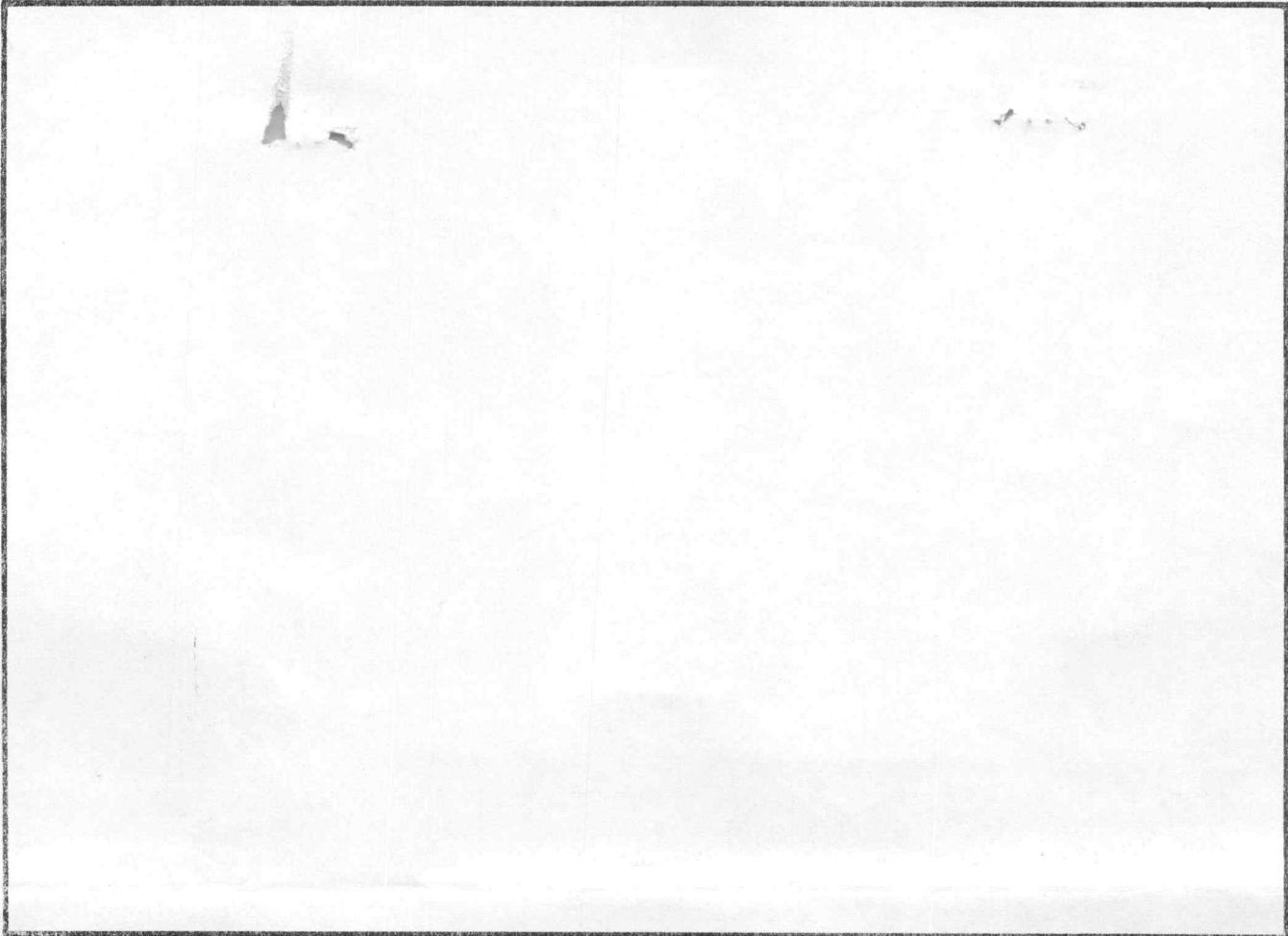
630

720



COMPANY : HELLAR DRILLING COMPANY  
WELL : CHRISTIAN CHURCH #3  
LOCATION : N/W-N/E-S/W 5-16S-27W  
DATE : 10-10-1995  
GAUGE # : 11088





This is an actual photograph of recorder chart.

POINT	PRESSURE		
	FIELD READING	OFFICE READING	
(A) Initial Hydrostatic Mud .....	<u>2156</u>	<u>2187</u>	P.S.I.
(B) First Initial Flow Pressure .....	<u>89</u>	<u>51</u>	P.S.I.
(C) First Final Flow Pressure .....	<u>22</u>	<u>22</u>	P.S.I.
(D) Initial Closed-in Pressure .....	<u>33</u>	<u>31</u>	P.S.I.
(E) Second Initial Flow Pressure .....	<u>22</u>	<u>22</u>	P.S.I.
(F) Second Final Flow Pressure .....	<u>22</u>	<u>22</u>	P.S.I.
(G) Final Closed-in Pressure .....	<u>22</u>	<u>27</u>	P.S.I.
(H) Final Hydrostatic Mud .....	<u>2134</u>	<u>2108</u>	P.S.I.