

GEOLOGIST'S REPORT

DRILLING TIME AND SAMPLE LOG

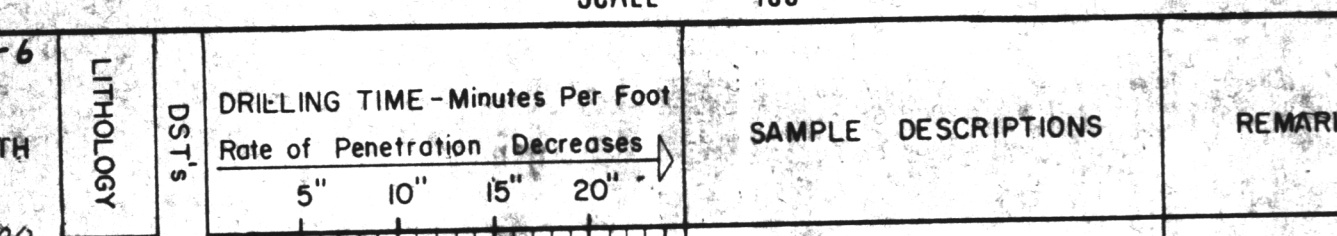
COMPANY: John P. Jennings
 LEASE: Schaake #2 O.W.D.D.
 FIELD: Wildcat
 LOCATION: 2170' F.L., 220' F.E.L.
 SEC.: 32 TWP: 12 S. RNG.: 20 E.
 COUNTY: Douglas STATE: Kansas
 CONTRACTOR: D.H. Drilling Co.
 SPUD: 10-21-80 COMP: 10-29-80
 RTD: 1610 LTD:
 MUD UP: 733' TYPE MUD: Fresh Gel
 SAMPLES SAVED FROM: 733' TO 1610'
 DRILLING TIME KEPT FROM: 733' TO 1610'
 SAMPLES EXAMINED FROM: 733' TO 1610'
 GEOLOGICAL SUPERVISION FROM: 733' TO 1610'
 GEOLOGIST ON WELL: Marty Dubois

FORMATION TOPS: LOG & SAMPLES

Cherokee	372 (494)	
Wagon Wheel	420 (493)	
Wagon Wheel	438 (493)	
Wagon Wheel	1100 (493)	
Wagon Wheel	1507 (493)	
Wagon Wheel	1516 (493)	
Wagon Wheel	1610	

REMARKS: This well was drilled to a depth of 733' on 5/18/80 and operations were suspended. The well was left standing full of mud until operations to deepen it were begun on 10/21/80. See log of Schaake #2 of 5/18/80 for uphole portion.

LEGEND



SCALE: "100"

