

WESTERN TESTERS INC.  
SUBSURFACE PRESSURE SURVEY

DATE : 7-29-86  
CUSTOMER : MID-CONTINENT ENERGY CORP.  
WELL : #1-29 TEST: 1  
ELEVATION : 1924  
SECTION : 29  
RANGE : 15W COUNTY : BARTON  
GAUGE SN# : 10270 RANGE : 4150  
TICKET : 11290  
LEASE : SCHROTT  
GEOLOGIST : C. CAULK  
FORMATION : LANSING 'A'  
TOWNSHIP : 18S  
STATE : KANSAS  
CLOCK : 12

INTERVAL FROM : 3201 TO : 3215 TOTAL DEPTH : 3215  
DEPTH OF SELECTIVE ZONE :  
PACKER DEPTH : 3196 SIZE : 6.63  
PACKER DEPTH : 3201 SIZE : 6.63  
PACKER DEPTH : SIZE :  
PACKER DEPTH : SIZE :

DRILLING CON. : MALLARD DRILLING RIG #1  
MUD TYPE : STARCH VISCOSITY : 40  
WEIGHT : 9.5 WATER LOSS (CC) : 12.4  
CHLORIDES (PPM) : -  
JARS-MAKE : - SERIAL NUMBER :  
DID WELL FLOW ? : NO REVERSED OUT ? : NO

DRILL COLLAR LENGTH : 300 FT I.D. inch : 2.25  
WEIGHT PIPE LENGTH : 0 FT I.D. inch : 0.00  
DRILL PIPE LENGTH : 2881 FT I.D. inch : 3.80  
TEST TOOL LENGTH : 20 FT TOOL SIZE : 5.50  
ANCHOR LENGTH : 14 FT ANCHOR SIZE : 5.50  
SURFACE CHOKE SIZE : .75 IN BOTTOM CHOKE SIZE : .75  
MAIN HOLE SIZE : 7.875 IN TOOL JOINT SIZE : 4.5 XH

BLOW COMMENT #1 : WEAK BLOW SLOWLY BUILDING ON THE INITIAL FLOW.  
BLOW COMMENT #2 : WEAK BLOW SLOWLY BUILDING ON THE FINAL FLOW.  
BLOW COMMENT #3 :  
BLOW COMMENT #4 :

RECOVERED : 125 FT OF: MUDDY WATER

Total Barrels Fluid = 0.61  
Total Fluid Prod Rate = 19.67 BFPD  
Indicated Wtr Rate = 18.88 BWPD

REMARK 1 :  
REMARK 2 : CHLORIDES: 48000 PPM  
REMARK 3 :  
REMARK 4 :

SET PACKER(S) : 6:50 PM TIME STARTED OFF BOTTOM : 8:20 PM  
WELL TEMPERATURE : 120  
INITIAL HYDROSTATIC PRESSURE (A) 1688  
INITIAL FLOW PERIOD MIN: 30 (B) 35 PSI TO (C) : 56  
INITIAL CLOSED IN PERIOD MIN: 27 (D) 1105  
FINAL FLOW PERIOD MIN: 15 (E) 79 PSI TO (F) : 83  
FINAL CLOSED IN PERIOD MIN: 15 (G) 1062  
FINAL HYDROSTATIC PRESSURE (H) 1659

WESTERN TESTERS INC.  
WICHITA - KANSAS

Pressure Transient Report  
-----

COMPANY : MID-CONTINENT ENERGY CORP.  
RIG : BARTON-KANSAS  
FIELD : SCHROTT  
WELL : #1-29  
DATE : 7-29-86  
GAUGE NO : 10270

OPERATIONAL COMMENTS

CHLORIDES: 48000 PPM

COMPANY : MID-CONTINENT ENERGY CORP.

FIELD : SCHROTT

WELL : #1-29

JOB # : 11290

GAUGE # : 10270

DEPTH : 3215

DATE : 29/ 7/86

EVENT :

DATA No.	REAL TIME HR:MN:SS	ELAPSE TIME DELTA HOURS	PRESSURE PSIG	TEMP DEG F	DELTA P Pi-P(i-1)
1	6:50: 0	0.000	35.000	120.00	0.000
2	6:54:60	0.083	35.000	120.00	0.000
3	7: 0: 1	0.167	38.000	120.00	3.000
4	7: 5: 0	0.250	41.000	120.00	3.000
5	7: 9:60	0.333	47.000	120.00	6.000
6	7:15: 1	0.417	54.000	120.00	7.000
7	7:20: 0	0.500	56.000	120.00	2.000
8	7:23: 0	0.550	981.000	120.00	925.000
9	7:26: 0	0.600	1026.000	120.00	45.000
10	7:29: 0	0.650	1049.000	120.00	23.000
11	7:32: 0	0.700	1066.000	120.00	17.000
12	7:35: 0	0.750	1077.000	120.00	11.000
13	7:38: 0	0.800	1087.000	120.00	10.000
14	7:41: 0	0.850	1094.000	120.00	7.000
15	7:44: 0	0.900	1099.000	120.00	5.000
16	7:47: 0	0.950	1105.000	120.00	6.000
17	7:48: 1	0.967	79.000	120.00	-1026.000
18	7:51:60	1.033	79.000	120.00	0.000
19	7:57: 1	1.117	79.000	120.00	0.000
20	8: 2: 0	1.200	83.000	120.00	4.000
21	8: 5: 0	1.250	906.000	120.00	823.000
22	8: 8: 0	1.300	1000.000	120.00	94.000
23	8:11: 0	1.350	1029.000	120.00	29.000
24	8:14: 0	1.400	1047.000	120.00	18.000
25	8:17: 0	1.450	1062.000	120.00	15.000

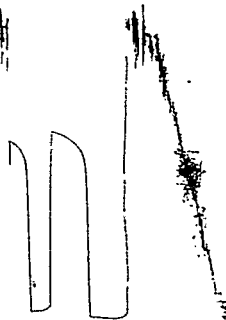
WESTERN TESTERS INC.

RT # 11290

0

05754

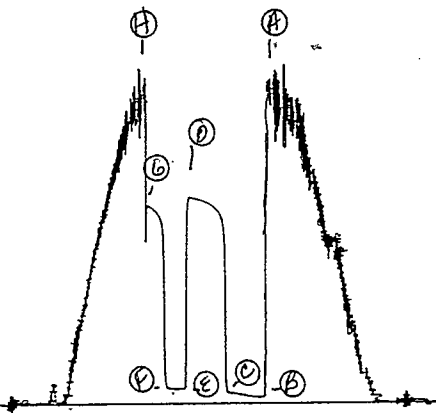
13268



JK # 1290

I

0574  
10470



WESTERN TESTERS INC.  
SUBSURFACE PRESSURE SURVEY

DATE : 7-30-86 TICKET : 11291  
CUSTOMER : MID-CONTINENT ENERGY CORP. LEASE : SCHROTT  
WELL : #1-29 TEST: 2 GEOLOGIST : C. CAULK  
ELEVATION : 1924 FORMATION : CONGLOMERATE  
SECTION : 29 TOWNSHIP : 18S  
RANGE : 15W COUNTY : BARTON STATE : KANSAS  
GAUGE SN# : 10270 RANGE : 4150 CLOCK : 12

INTERVAL FROM : 3427 TO : 3477 TOTAL DEPTH : 3477  
DEPTH OF SELECTIVE ZONE :  
PACKER DEPTH : 3422 SIZE : 6.63  
PACKER DEPTH : 3427 SIZE : 6.63  
PACKER DEPTH : SIZE :  
PACKER DEPTH : SIZE :

DRILLING CON. : MALLARD DRILLING RIG #1  
MUD TYPE : STARCH VISCOSITY : 40  
WEIGHT : 9.7 WATER LOSS (CC) : 9.8  
CHLORIDES (PPM) : --  
JARS-MAKE : WTC SERIAL NUMBER : 421  
DID WELL FLOW ? : NO REVERSED OUT ? : NO

DRILL COLLAR LENGTH : 300 FT I.D. inch : 2.25  
WEIGHT PIPE LENGTH : 0 FT I.D. inch : 0.00  
DRILL PIPE LENGTH : 3089 FT I.D. inch : 3.80  
TEST TOOL LENGTH : 28 FT TOOL SIZE : 5.50  
ANCHOR LENGTH : 50 FT ANCHOR SIZE : 5.50  
SURFACE CHOKE SIZE : .75 IN BOTTOM CHOKE SIZE : .75  
MAIN HOLE SIZE : 7.875 IN TOOL JOINT SIZE : 4.5 XH

BLOW COMMENT #1 : VERY WEAK BLOW SLOWLY DYING OFF IN 17 MINUTES  
BLOW COMMENT #2 : ON THE INITIAL FLOW. NO BLOW ON THE FINAL FLOW  
BLOW COMMENT #3 :  
BLOW COMMENT #4 :

RECOVERED : 40 FT OF: DRILLING MUD.

Total Barrels Fluid = 0.20  
Total Fluid Prod Rate = 8.09 BFPD  
Indicated Wtr Rate = 7.08 BWPD

REMARK 1 :  
REMARK 2 : ANCHOR CONSISTS OF 31' JOINT PIPE-19'PERFS  
REMARK 3 : 10' ABOVE & 9' BELOW  
REMARK 4 : SLID TOOL 10' TO BOTTOM

SET PACKER(S) : 9:35 PM TIME STARTED OFF BOTTOM : 10:40 PM  
WELL TEMPERATURE : 122  
INITIAL HYDROSTATIC PRESSURE (A) 1796  
INITIAL FLOW PERIOD MIN: 20 (B) 49 PSI TO (C) : 49  
INITIAL CLOSED IN PERIOD MIN: 15 (D) 86  
FINAL FLOW PERIOD MIN: 15 (E) 53 PSI TO (F) : 53  
FINAL CLOSED IN PERIOD MIN: 15 (G) 85  
FINAL HYDROSTATIC PRESSURE (H) 1796

WESTERN TESTERS INC.  
WICHITA - KANSAS

Pressure Transient Report

COMPANY : MID-CONTINENT ENERGY CORP.  
RIG : BARTON-KANSAS  
FIELD : SCHROTT  
WELL : #1-29  
DATE : 7-30-86  
GAUGE NO : 10270

OPERATIONAL COMMENTS

ANCHOR CONSISTS OF 31' JOINT PIPE-19' PERFS  
10' ABOVE & 9' BELOW  
SLID TOOL 10' TO BOTTOM

COMPANY : MID-CONTINENT ENERGY CORP.

FIELD : SCHROTT

WELL : #1-29

JOB # : 11291

GAUGE # : 10270

DEPTH : 3477

DATE : 30/ 7/86

EVENT :

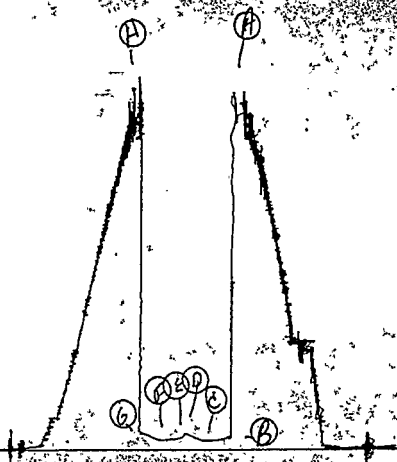
DATA No.	REAL TIME HR:MN:SS	ELAPSE TIME DELTA HOURS	PRESSURE PSIG	TEMP DEG F	DELTA P Pi-P(i-1)
1	9:35:0	0.000	49.000	122.00	0.000
2	9:39:60	0.083	49.000	122.00	0.000
3	9:45:1	0.167	49.000	122.00	0.000
4	9:50:0	0.250	49.000	122.00	0.000
5	9:54:60	0.333	49.000	122.00	0.000
6	9:57:60	0.383	53.000	122.00	4.000
7	10:0:60	0.433	62.000	122.00	9.000
8	10:3:60	0.483	71.000	122.00	9.000
9	10:6:60	0.533	81.000	122.00	10.000
10	10:9:60	0.583	86.000	122.00	5.000
11	10:11:0	0.600	53.000	122.00	-33.000
12	10:15:1	0.667	53.000	122.00	0.000
13	10:20:0	0.750	53.000	122.00	0.000
14	10:24:60	0.833	53.000	122.00	0.000
15	10:27:60	0.883	53.000	122.00	0.000
16	10:30:60	0.933	58.000	122.00	5.000
17	10:33:60	0.983	66.000	122.00	8.000
18	10:36:60	1.033	79.000	122.00	13.000
19	10:39:60	1.083	85.000	122.00	6.000

WESTERN TESTERS INC.

10270 DST#2

X #11291

JK #11291  
I



#13268 DST+2

Ticket #11291

JK #11291

O



WESTERN TESTERS INC.  
SUBSURFACE PRESSURE SURVEY

DATE	: 7-31-86	TICKET	: 11292
CUSTOMER	: MID-CONTINENT ENERGY CORP.	LEASE	: SCHROTT
WELL	: #1-29 TEST: 3	GEOLOGIST	: C. CAULK
ELEVATION	: 1924	FORMATION	: REGAN SD
SECTION	: 29	TOWNSHIP	: 18S
RANGE	: 15W	COUNTY	: BARTON
GAUGE SN#	: 13403	RANGE	: 4050
		STATE	: KANSAS
		CLOCK	: 12

INTERVAL FROM	: 3500	TO	: 3528	TOTAL DEPTH	: 3528
DEPTH OF SELECTIVE ZONE	:				
PACKER DEPTH	: 3495	SIZE	: 6.63		
PACKER DEPTH	: 3500	SIZE	: 6.63		
PACKER DEPTH	:	SIZE	:		
PACKER DEPTH	:	SIZE	:		

DRILLING CON.	: MALLARD DRILLING RIG #1		
MUD TYPE	: STARCH	VISCOSITY	: 48
WEIGHT	: 9.8	WATER LOSS (CC)	: 10.2
CHLORIDES (PPM)	: -		
JARS-MAKE	: WTC	SERIAL NUMBER	: 421
DID WELL FLOW ?	: NO	REVERSED OUT ?	: NO

DRILL COLLAR LENGTH	: 300 FT	I.D. inch	: 2.25
WEIGHT PIPE LENGTH	: 0 FT	I.D. inch	: 0.00
DRILL PIPE LENGTH	: 3172 FT	I.D. inch	: 3.80
TEST TOOL LENGTH	: 28 FT	TOOL SIZE	: 5.50
ANCHOR LENGTH	: 28 FT	ANCHOR SIZE	: 5.50
SURFACE CHOKE SIZE	: .75 IN	BOTTOM CHOKE SIZE	: .75
MAIN HOLE SIZE	: 7.875 IN	TOOL JOINT SIZE	: 4.5 XH

BLOW COMMENT #1 : WEAK BUT STEADY BLOW ON THE INITIAL FLOW.  
 BLOW COMMENT #2 : VERY WEAK BUT STEADY BLOW ON THE FINAL FLOW.  
 BLOW COMMENT #3 :  
 BLOW COMMENT #4 :

RECOVERED	: 60	FT OF:	SLIGHTLY OIL & GAS CUT MUD
RECOVERED	: 60	FT OF:	MUD

Total Barrels Fluid	=	0.59		
Total Fluid Prod Rate	=	14.16 BFPD		
Indicated Oil Rate	=	0.71 BOPD	Indicated Wtr Rate	= 10.62
BWPD				
Corrected Oil Rate	=	4.36 BOPD	Corrected Wtr Rate	= 65.33
BWPD				

REMARK 1 :  
 REMARK 2 : RECOVERED 60 FEET OF GAS ABOVE FLUID.  
 REMARK 3 :  
 REMARK 4 :

SET PACKER(S)	: 6:25 PM	TIME STARTED OFF BOTTOM	: 8:55 PM
WELL TEMPERATURE	: 121		
INITIAL HYDROSTATIC PRESSURE		(A)	1818
INITIAL FLOW PERIOD	MIN: 30	(B)	63 PSI TO (C) : 63
INITIAL CLOSED IN PERIOD	MIN: 45	(D)	77
FINAL FLOW PERIOD	MIN: 30	(E)	77 PSI TO (F) : 77
FINAL CLOSED IN PERIOD	MIN: 39	(G)	80
FINAL HYDROSTATIC PRESSURE		(H)	1804

WESTERN TESTERS INC.  
WICHITA - KANSAS

Pressure Transient Report  
-----

COMPANY : MID-CONTINENT ENERGY CORP.  
RIG : BARTON-KANSAS  
FIELD : SCHROTT  
WELL : #1-29  
DATE : 7-31-86  
GAUGE NO : 13403

OPERATIONAL COMMENTS

RECOVERED 60 FEET OF GAS ABOVE FLUID.

COMPANY : MID-CONTINENT ENERGY CORP.

WELL : #1-29  
 GAUGE # : 13403  
 DATE : 31/ 7/86

FIELD : SCHROTT  
 JOB # : 11292  
 DEPTH : 3528  
 EVENT :

DATA No.	REAL TIME HR:MN:SS	ELAPSE TIME DELTA HOURS	PRESSURE PSIG	TEMP DEG F	DELTA P Pi-P(i-1)
1	6:25: 0	0.000	63.000	121.00	0.000
2	6:29:60	0.083	63.000	121.00	0.000
3	6:35: 1	0.167	63.000	121.00	0.000
4	6:40: 0	0.250	63.000	121.00	0.000
5	6:44:60	0.333	63.000	121.00	0.000
6	6:50: 1	0.417	63.000	121.00	0.000
7	6:55: 0	0.500	63.000	121.00	0.000
8	6:58: 0	0.550	64.000	121.00	1.000
9	7: 1: 0	0.600	65.000	121.00	1.000
10	7: 4: 0	0.650	67.000	121.00	2.000
11	7: 7: 0	0.700	70.000	121.00	3.000
12	7:10: 0	0.750	72.000	121.00	2.000
13	7:13: 0	0.800	73.000	121.00	1.000
14	7:16: 0	0.850	74.000	121.00	1.000
15	7:19: 0	0.900	75.000	121.00	1.000
16	7:22: 0	0.950	76.000	121.00	1.000
17	7:25: 0	1.000	77.000	121.00	1.000
18	7:28: 0	1.050	77.000	121.00	0.000
19	7:31: 0	1.100	77.000	121.00	0.000
20	7:34: 0	1.150	77.000	121.00	0.000
21	7:37: 0	1.200	77.000	121.00	0.000
22	7:40: 0	1.250	77.000	121.00	0.000
23	7:41: 1	1.267	77.000	121.00	0.000
24	7:44:60	1.333	77.000	121.00	0.000
25	7:50: 1	1.417	77.000	121.00	0.000
26	7:55: 0	1.500	77.000	121.00	0.000
27	7:59:60	1.583	77.000	121.00	0.000
28	8: 5: 1	1.667	77.000	121.00	0.000
29	8:10: 0	1.750	77.000	121.00	0.000
30	8:13: 0	1.800	77.000	121.00	0.000
31	8:16: 0	1.850	77.000	121.00	0.000
32	8:19: 0	1.900	77.000	121.00	0.000
33	8:22: 0	1.950	77.000	121.00	0.000
34	8:25: 0	2.000	77.000	121.00	0.000
35	8:28: 0	2.050	78.000	121.00	1.000
36	8:31: 0	2.100	79.000	121.00	1.000
37	8:34: 0	2.150	80.000	121.00	1.000
38	8:37: 0	2.200	80.000	121.00	0.000
39	8:40: 0	2.250	80.000	121.00	0.000
40	8:43: 0	2.300	80.000	121.00	0.000
41	8:46: 0	2.350	80.000	121.00	0.000
42	8:49: 0	2.400	80.000	121.00	0.000

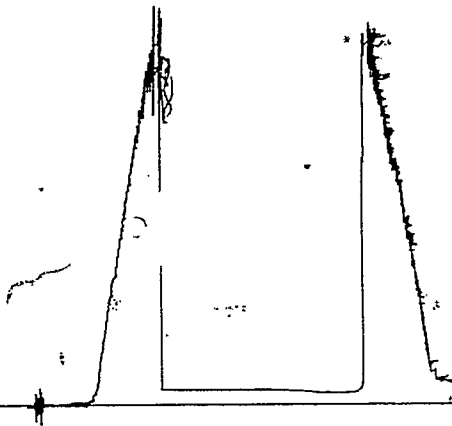
WESTERN TESTERS INC.

3659 0543

Ticket # 11292

Ke # 11292

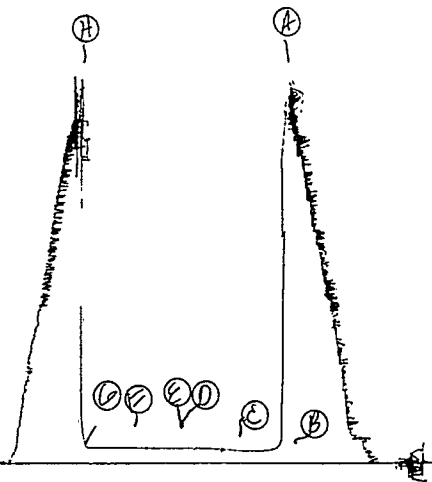
0



#13403 05143

X #11292

KA #11292  
I



WESTERN TESTERS INC.  
SUBSURFACE PRESSURE SURVEY

DATE	: 8-1-86	TICKET	: 11293
CUSTOMER	: MID-CONTINENT ENERGY CORP.	LEASE	: SCHROTT
WELL	: #1-29 TEST: 4	GEOLOGIST	: C. CAULK
ELEVATION	: 1924	FORMATION	: REGAN SD
SECTION	: 29	TOWNSHIP	: 18S
RANGE	: 15W	COUNTY	: BARTON
GAUGE SN#	: 13403	RANGE	: 4050
		STATE	: KANSAS
		CLOCK	: 12

INTERVAL FROM	: 3505	TO	: 3543	TOTAL DEPTH	: 3543
DEPTH OF SELECTIVE ZONE	:				
PACKER DEPTH	: 3500	SIZE	: 6.63		
PACKER DEPTH	: 3505	SIZE	: 6.63		
PACKER DEPTH	:	SIZE	:		
PACKER DEPTH	:	SIZE	:		

DRILLING CON.	: MALLARD DRILLING RIG #1		
MUD TYPE	: STARCH	VISCOSITY	: 43
WEIGHT	: 9.9	WATER LOSS (CC)	: 11.9
CHLORIDES (PPM)	: --		
JARS-MAKE	: WTC	SERIAL NUMBER	: 421
DID WELL FLOW ?	: NO	REVERSED OUT ?	: NO

DRILL COLLAR LENGTH	: 300 FT	I.D. inch	: 2.25
WEIGHT PIPE LENGTH	: 0 FT	I.D. inch	: 0.00
DRILL PIPE LENGTH	: 3177 FT	I.D. inch	: 3.80
TEST TOOL LENGTH	: 28 FT	TOOL SIZE	: 5.50
ANCHOR LENGTH	: 38 FT	ANCHOR SIZE	: 5.50
SURFACE CHOKE SIZE	: .75 IN	BOTTOM CHOKE SIZE	: .75
MAIN HOLE SIZE	: 7.875 IN	TOOL JOINT SIZE	: 4.5 XH

BLOW COMMENT #1 : WEAK BLOW SLOWLY BUILDING ON THE INITIAL FLOW.  
 BLOW COMMENT #2 : NO BLOW THROUGHOUT THE FINAL FLOW.  
 BLOW COMMENT #3 :  
 BLOW COMMENT #4 :

RECOVERED : 120 FT OF: VERY SLIGHTLY OIL CUT GASSY MUD.

Total Barrels Fluid	=	0.59		
Total Fluid Prod Rate	=	16.99 BFPD		
Indicated Oil Rate	=	0.17 BOPD	Indicated Wtr Rate	= 14.16
Corrected Oil Rate	=	2.61 BOPD	Corrected Wtr Rate	= 217.76

BWPD  
BWPD

REMARK 1 :  
 REMARK 2 :  
 REMARK 3 :  
 REMARK 4 :

SET PACKER(S)	: 11:15 AM	TIME STARTED OFF BOTTOM	: 12:55 PM
WELL TEMPERATURE	: 121		
INITIAL HYDROSTATIC PRESSURE		(A)	1836
INITIAL FLOW PERIOD	MIN: 30	(B)	81 PSI TO (C) : 82
INITIAL CLOSED IN PERIOD	MIN: 30	(D)	88
FINAL FLOW PERIOD	MIN: 20	(E)	88 PSI TO (F) : 88
FINAL CLOSED IN PERIOD	MIN: 18	(G)	88
FINAL HYDROSTATIC PRESSURE		(H)	1836

WESTERN TESTERS INC.  
WICHITA - KANSAS

Pressure Transient Report  
-----

COMPANY : MID-CONTINENT ENERGY CORP.  
RIG : BARTON-KANSAS  
FIELD : SCHROTT  
WELL : #1-29  
DATE : 8-1-86  
GAUGE NO : 13403

OPERATIONAL COMMENTS

COMPANY : MID-CONTINENT ENERGY CORP.

FIELD : SCHROTT

WELL : #1-29

JOB # : 11293

GAUGE # : 13403

DEPTH : 3543

DATE : 1/ 8/86

EVENT :

DATA No.	REAL TIME HR:MN:SS	ELAPSE TIME DELTA HOURS	PRESSURE PSIG	TEMP DEG F	DELTA P Pi-P(i-1)
1	11:15: 0	0.000	81.000	121.00	0.000
2	11:19:60	0.083	81.000	121.00	0.000
3	11:25: 1	0.167	81.000	121.00	0.000
4	11:30: 0	0.250	81.000	121.00	0.000
5	11:34:60	0.333	81.000	121.00	0.000
6	11:40: 1	0.417	81.000	121.00	0.000
7	11:45: 0	0.500	82.000	121.00	1.000
8	11:48: 0	0.550	83.000	121.00	1.000
9	11:51: 0	0.600	84.000	121.00	1.000
10	11:54: 0	0.650	85.000	121.00	1.000
11	11:57: 0	0.700	86.000	121.00	1.000
12	12: 0: 0	0.750	87.000	121.00	1.000
13	12: 3: 0	0.800	88.000	121.00	1.000
14	12: 6: 0	0.850	88.000	121.00	0.000
15	12: 9: 0	0.900	88.000	121.00	0.000
16	12:12: 0	0.950	88.000	121.00	0.000
17	12:15: 0	1.000	88.000	121.00	0.000
18	12:16: 1	1.017	88.000	121.00	0.000
19	12:19:60	1.083	88.000	121.00	0.000
20	12:25: 1	1.167	88.000	121.00	0.000
21	12:30: 0	1.250	88.000	121.00	0.000
22	12:34:60	1.333	88.000	121.00	0.000
23	12:37:60	1.383	88.000	121.00	0.000
24	12:40:60	1.433	88.000	121.00	0.000
25	12:43:60	1.483	88.000	121.00	0.000
26	12:46:60	1.533	88.000	121.00	0.000
27	12:49:60	1.583	88.000	121.00	0.000
28	12:52:60	1.633	88.000	121.00	0.000

WESTERN TESTERS INC.

3659 DIST 14

Ticket # 11293

JKT # 11293

0

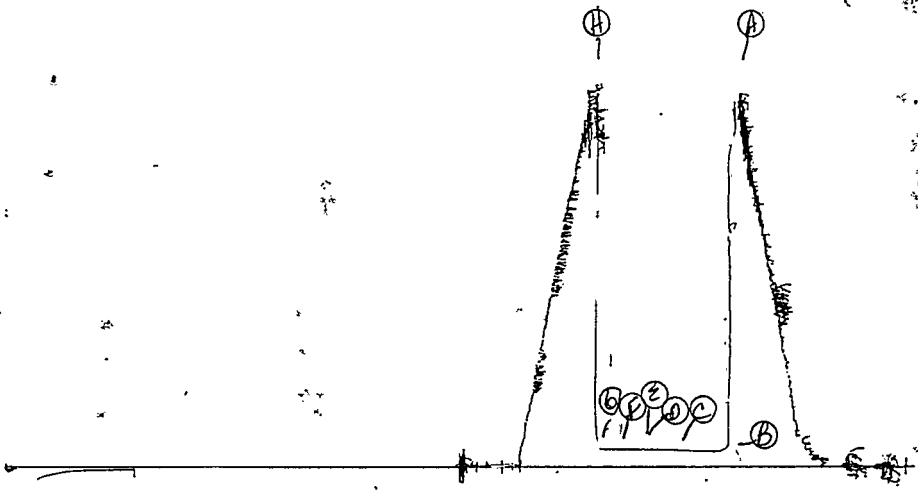


X 11293 05743

X #13103

KA # 11293

I



WESTERN TESTERS INC.  
SUBSURFACE PRESSURE SURVEY

DATE	: 8-1-86	TICKET	: 11294
CUSTOMER	: MID-CONTINENT ENERGY CORP.	LEASE	: SCHROTT
WELL	: #1-29 TEST: 5	GEOLOGIST	: C. CAULK
ELEVATION	: 1924	FORMATION	: REAGAN
SECTION	: 29	TOWNSHIP	: 18S
RANGE	: 15W	COUNTY	: BARTON
GAUGE SN#	: 13403	RANGE	: 4050
		STATE	: KANSAS
		CLOCK	: 12

INTERVAL FROM	: 3532	TO	: 3549	TOTAL DEPTH	: 3549
DEPTH OF SELECTIVE ZONE	:				
PACKER DEPTH	: 3527	SIZE	: 6.63		
PACKER DEPTH	: 3532	SIZE	: 6.63		
PACKER DEPTH	:	SIZE	:		
PACKER DEPTH	:	SIZE	:		

DRILLING CON.	: MALLARD DRILLING RIG #1		
MUD TYPE	: STARCH	VISCOSITY	: 40
WEIGHT	: 9.8	WATER LOSS (CC)	: 12.8
CHLORIDES (PPM)	: --		
JARS-MAKE	: WTC	SERIAL NUMBER	: 401
DID WELL FLOW ?	: NO	REVERSED OUT ?	: NO

DRILL COLLAR LENGTH	: 300 FT	I.D. inch	: 2.25
WEIGHT PIPE LENGTH	: 0 FT	I.D. inch	: 0.00
DRILL PIPE LENGTH	: 3204 FT	I.D. inch	: 3.80
TEST TOOL LENGTH	: 28 FT	TOOL SIZE	: 5.50
ANCHOR LENGTH	: 17 FT	ANCHOR SIZE	: 5.50
SURFACE CHOKE SIZE	: .75 IN	BOTTOM CHOKE SIZE	: .75
MAIN HOLE SIZE	: 7.875 IN	TOOL JOINT SIZE	: 4.5 XH

BLOW COMMENT #1 : WEAK BLOW SLOWLY BUILDING THROUGHOUT THE  
 BLOW COMMENT #2 : INITIAL FLOW. VERY WEAK BLOW SLOWLY  
 BLOW COMMENT #3 : BUILDING VERY LITTLE THROUGHOUT THE FINAL  
 BLOW COMMENT #4 : FLOW.

RECOVERED : 120 FT OF: DRILLING MUD (WITH TRACE OF OIL)

Total Barrels Fluid	=	0.59		
Total Fluid Prod Rate	=	9.44 BFPD		
Indicated Oil Rate	=	0.04 BOPD	Indicated Wtr Rate	= 7.87
Corrected Oil Rate	=	5.81 BOPD	Corrected Wtr Rate	= 1161.39

BWPD  
BWPD

REMARK 1 :  
 REMARK 2 :  
 REMARK 3 :  
 REMARK 4 :

SET PACKER(S)	: 10:35 PM	TIME STARTED OFF BOTTOM	: 1:50 AM
WELL TEMPERATURE	: 121		
INITIAL HYDROSTATIC PRESSURE		(A)	1917
INITIAL FLOW PERIOD	MIN: 30	(B)	75 PSI TO (C) : 83
INITIAL CLOSED IN PERIOD	MIN: 45	(D)	104
FINAL FLOW PERIOD	MIN: 60	(E)	103 PSI TO (F) : 103
FINAL CLOSED IN PERIOD	MIN: 63	(G)	106
FINAL HYDROSTATIC PRESSURE		(H)	1838

WESTERN TESTERS INC.  
WICHITA - KANSAS

Pressure Transient Report  
-----

COMPANY : MID-CONTINENT ENERGY CORP.  
RIG : BARTON-KANSAS  
FIELD : SCHROTT  
WELL : #1-29  
DATE : 8-1-86  
GAUGE NO : 13403

OPERATIONAL COMMENTS

COMPANY : MID-CONTINENT ENERGY CORP.

WELL : #1-29  
 GAUGE # : 13403  
 DATE : 1/ 8/86

FIELD : SCHROTT  
 JOB # : 11294  
 DEPTH : 3549  
 EVENT :

DATA No.	REAL TIME HR:MN:SS	ELAPSE TIME DELTA HOURS	PRESSURE PSIG	TEMP DEG F	DELTA P $P_i - P_{(i-1)}$
1	10:35: 0	0.000	75.000	121.00	0.000
2	10:39:60	0.083	75.000	121.00	0.000
3	10:45: 1	0.167	75.000	121.00	0.000
4	10:50: 0	0.250	75.000	121.00	0.000
5	10:54:60	0.333	77.000*	121.00	2.000
6	11: 0: 1	0.417	80.000	121.00	3.000
7	11: 5: 0	0.500	83.000	121.00	3.000
8	11: 8: 0	0.550	85.000	121.00	2.000
9	11:11: 0	0.600	91.000	121.00	6.000
10	11:14: 0	0.650	94.000	121.00	3.000
11	11:17: 0	0.700	97.000	121.00	3.000
12	11:20: 0	0.750	100.000	121.00	3.000
13	11:23: 0	0.800	101.000	121.00	1.000
14	11:26: 0	0.850	102.000	121.00	1.000
15	11:29: 0	0.900	103.000	121.00	1.000
16	11:32: 0	0.950	104.000	121.00	1.000
17	11:35: 0	1.000	104.000	121.00	0.000
18	11:38: 0	1.050	104.000	121.00	0.000
19	11:41: 0	1.100	104.000	121.00	0.000
20	11:44: 0	1.150	104.000	121.00	0.000
21	11:47: 0	1.200	104.000	121.00	0.000
22	11:50: 0	1.250	104.000	121.00	0.000
23	11:51: 1	1.267	103.000	121.00	-1.000
24	11:54:60	1.333	103.000	121.00	0.000
25	12: 0: 1	1.417	103.000	121.00	0.000
26	12: 5: 0	1.500	103.000	121.00	0.000
27	12: 9:60	1.583	103.000	121.00	0.000
28	12:15: 1	1.667	103.000	121.00	0.000
29	12:20: 0	1.750	103.000	121.00	0.000
30	12:24:60	1.833	103.000	121.00	0.000
31	12:30: 1	1.917	103.000	121.00	0.000
32	12:35: 0	2.000	103.000	121.00	0.000
33	12:39:60	2.083	103.000	121.00	0.000
34	12:45: 1	2.167	103.000	121.00	0.000
35	12:50: 0	2.250	103.000	121.00	0.000
36	12:53: 0	2.300	103.000	121.00	0.000
37	12:56: 0	2.350	103.000	121.00	0.000
38	12:59: 0	2.400	104.000	121.00	1.000
39	13: 2: 0	2.450	105.000	121.00	1.000
40	13: 5: 0	2.500	106.000	121.00	1.000
41	13: 8: 0	2.550	106.000	121.00	0.000
42	13:11: 0	2.600	106.000	121.00	0.000
43	13:14: 0	2.650	106.000	121.00	0.000
44	13:17: 0	2.700	106.000	121.00	0.000
45	13:20: 0	2.750	106.000	121.00	0.000
46	13:23: 0	2.800	106.000	121.00	0.000
47	13:26: 0	2.850	106.000	121.00	0.000
48	13:29: 0	2.900	106.000	121.00	0.000
49	13:32: 0	2.950	106.000	121.00	0.000
50	13:35: 0	3.000	106.000	121.00	0.000
51	13:38: 0	3.050	106.000	121.00	0.000
52	13:41: 0	3.100	106.000	121.00	0.000

COMPANY : MID-CONTINENT ENERGY CORP.

WELL : #1-29  
GAUGE # : 13403  
DATE : 1/ 8/86

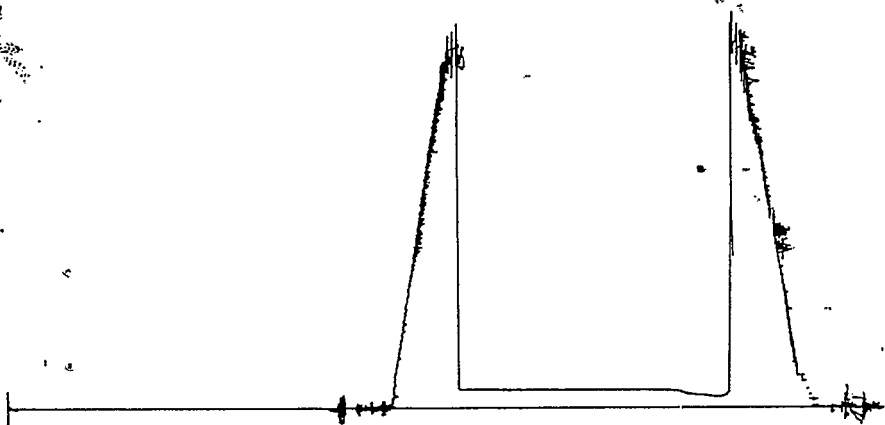
FIELD : SCHROTT  
JOB # : 11294  
DEPTH : 3549  
EVENT :

DATA No.	REAL TIME HR:MN:SS	ELAPSE TIME DELTA HOURS	PRESSURE PSIG	TEMP DEG F	DELTA P Pi-P(i-1)
53	13:44: 0	3.150	106.000	121.00	0.000
54	13:47: 0	3.200	106.000	121.00	0.000
55	13:50: 0	3.250	106.000	121.00	0.000
56	13:53: 0	3.300	106.000	121.00	0.000

WESTERN TESTERS INC.

3659 DST#5  
Ticket #11294

JK #11294  
0



# 11294 DST#5  
X #13403

JK # 11294  
I

