

GEOLOGIST'S REPORT

DRILLING TIME AND SAMPLE LOG

OPERATOR ESP DEVELOPMENT

LEASE MORRILL

WELL NO. #1

FIELD WILDCAT

LOCATION C-N12-SE-NF

SEC. 25 T19S R15E

COUNTY RUSSELL STATE KANSAS

CONTRACTOR ELMHARTS DRILLING

COMM. 8-19-83

R.D. 35-150

SAMPLES STATED FROM 2400 TO 3100

DRILLING TIME FROM 2400 TO 3100

SAMPLES EXAMINED FROM 2400 TO 3100

GEOLOGICAL SUPERVISION FROM 2400 TO 3100

MUD UPTO 2550

WELL SITE GEOLOGIST STEVEN R. MITCHELL

FORMATION TOP LOG SAMPLER STRIP

ANADIRITE 25' (911) 27' (916) 29' (921)

TARKIA 27' (888) 29' (893) 31' (898)

HEBNER 30' (128) 32' (133) 34' (138)

LORONTO 30' (145) 32' (150) 34' (155)

LANISING 30' (182) 32' (187) 34' (192)

BASE K.C. 33' (174) 35' (179) 37' (184)

CONGLOMERATE 33' (158) 35' (163) 37' (168)

ARBUCKLE 33' (158) 35' (163) 37' (168)

REPORT FOR

DATE 8/24/83

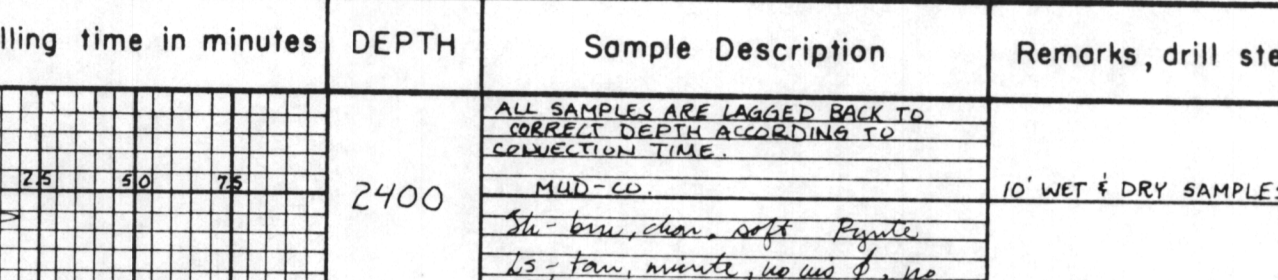
BY SRS

WELLS

REFERENCE WELL FOR STRUCTURAL COMPARISON: PETRO, EX. # HARPER

C-112-W12-NF-524-T19S-R15E-W, RUSSELL COUNTY, KANSAS, DATA BY

LEGEND



SCALE 100

Main data table with columns: Lithology, Drilling time in minutes, DEPTH, Sample Description, Remarks, drill stem tests, etc. Includes detailed stratigraphic logs and sample descriptions.